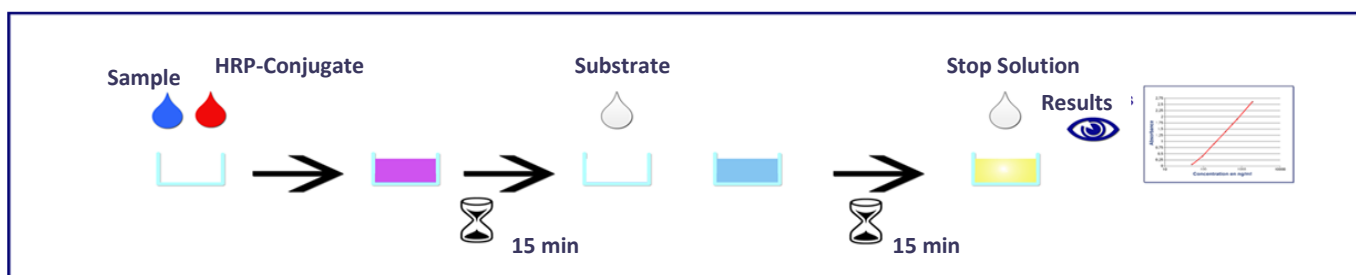


FastELISA[®]

New Generation of ELISA Kits

- Ready-To-Use
- Easy-to-See
- Quantitative
- Reliable



PRINCIPLE OF THE ASSAY

The method employs the quantitative sandwich enzyme immunoassay technique. A polyclonal antibody specific to IgG (H+L) is pre-coated onto microwells. Samples and standards are pipetted into microwells and IgG present in the sample are bound by the capture antibody. Then, a HRP (horseradish peroxidase) conjugated anti-IgG (H+L) antibody is pipetted and incubated simultaneously with samples. After washing microwells in order to remove any non specific binding, the ready to use substrate solution (TMB) is added to microwells and color develops proportionally to the amount of IgG in the sample. Color development is then stopped by addition of stop solution. Absorbance is measured at 450 nm.

Features

Fast - One step incubation

Ready-to-use reagents

Wide dynamic range

Color coded reagents

Benefits

Assay results in 30 minutes

Save time & resources/manpower

High sensitivity

Error-free

Providing flexibility in designing and planning your experiments

Call toll free: 1-877-ADMEcel for an evaluation today

Applications

- Transient transfection
- Screening of high producing clones
- Monitoring of antibody production
- Human IgG quantification - 96 tests
- Mouse IgG quantification - 96 tests
- Mouse Ig Isotyping - 12 tests
- Bovine IgG quantification - 96 tests
- Rat IgG quantification - 96 tests

All Reagents are stable at 4°C for at least 6 Months

| Product Number | Product Name | Format |
|----------------|---|------------------------|
| RDB 3256-1 | Mouse immunoglobulins G quantification kit | 1 kit - 96 assays |
| RDB 3256-5 | | 1 kit - 5 x 96 assays |
| RDB 3256-10 | | 1 kit - 10 x 96 assays |
| RDB 3255-1 | Mouse immunoglobulins isotyping kit | 1 kit - 12 assays |
| RDB 3255-5 | | 1 kit - 5 x 12 assays |
| RDB 3255-10 | | 1 kit - 10 x 12 assays |
| RDB 3257-1 | Human immunoglobulins G quantification kit | 1 kit - 96 assays |
| RDB 3257-5 | | 1 kit - 5 x 96 assays |
| RDB 3257-10 | | 1 kit - 10 x 96 assays |
| RDB 3258-1 | Bovine immunoglobulins G quantification kit | 1 kit - 96 assays |
| RDB 3258-5 | | 1 kit - 5 x 96 assays |
| RDB-3259-1 | Rat immunoglobulins G quantification kit | 1 kit - 96 assays |
| RDB3259-5 | | 1 kit - 5 x 96 assays |
| RDB-3259-10 | | 1 kit - 10 x 96 assays |



FastELISA® Is registered trademark of RD-Biotech, Besancon, France



ADMEcell, Inc.
980 Atlantic Ave, Suite # 110
Alameda, CA 94501
www.admecell.com

Toll Free: 877.236.3255
Tel: 510-522-4200
Fax: 510-522-4203
info@admecell.com

©2009 ADMEcell, Inc.
ADMEcell and ADMEcell logo are trademarks and /or registered trademarks of ADMEcell, Inc.