

AGCOMPASS

Optimizing Your AgCompass Experience



AgCompass Architecture

Connecting to AgCompass

Printing

Applications

Logging off

Backup

Help

Additional Functionality

Your Input

OPTIMIZING YOUR AGCOMPASS EXPERIENCE

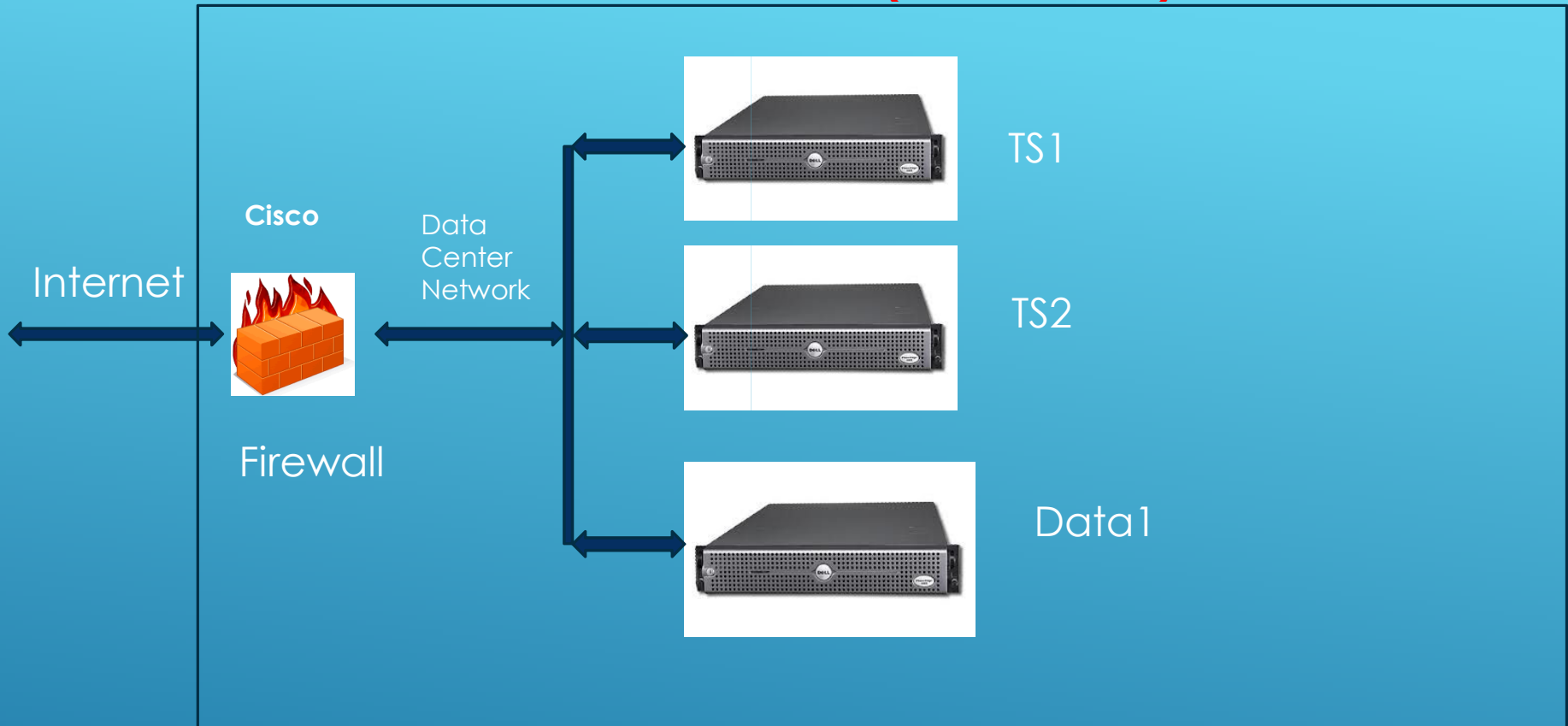


Involta Data Center (Marion, Iowa)

Remote
desktop
connection



Local
desktop



GCOMPASS ARCHITECTURE

INVOLTA DATA CENTER (MARION, IOWA)



<http://www.involta.com>

Data Center Features

Involta Data Centers are powered by multiple power feeds from separate sources backed up by multiple UPS and diesel powered generator systems

NEUTRAL NETWORK Involta facilities utilize multiple carrier-neutral, high speed internet feeds ensuring you reasonably priced bandwidth delivered over a secure and redundant network.

COMPLIANCE Involta facilities have undergone industry standard External & Internal audits against SAS 70 Type II, PCI, HIPAA, SOX, JSOX, GLB, SSAE 16 SOC II and many more standards. Involta can help an organization pass almost any compliance standard.

SECURITY Involta facilities are built in ultra secure structures, located in geographic safe-zones. Multiple layers of security ensure that access is granted only to the right individuals. All access is logged and retained according to industry best practices. Data centers have no signage and customer information is treated as confidential. Involta staff are trained to follow all security procedures and policy. Digital Eye verification required by all who enter building.

ENVIRONMENTAL Involta employs a cold aisle containment system as well as a mix of climate cooling and mechanical cooling to create affordable, reliable and efficient environmental conditions throughout all our new Tier III facilities.

OPERATIONS (NOC) Involta NOC teams ensure top performance, enforce security standards and assist with customer requests. Each data center is protected and operated by an experienced NOC Team. Several of our data centers have an in-house NOC team staffed 24x7.

UPTIME SLA Involta data centers set the standards for redundant power and climate control giving you the confidence you will have the power necessary to run your mission critical services. And we back it up with 100% Uptime Service Level Agreements.

INVOLTA COMPUTER CENTER

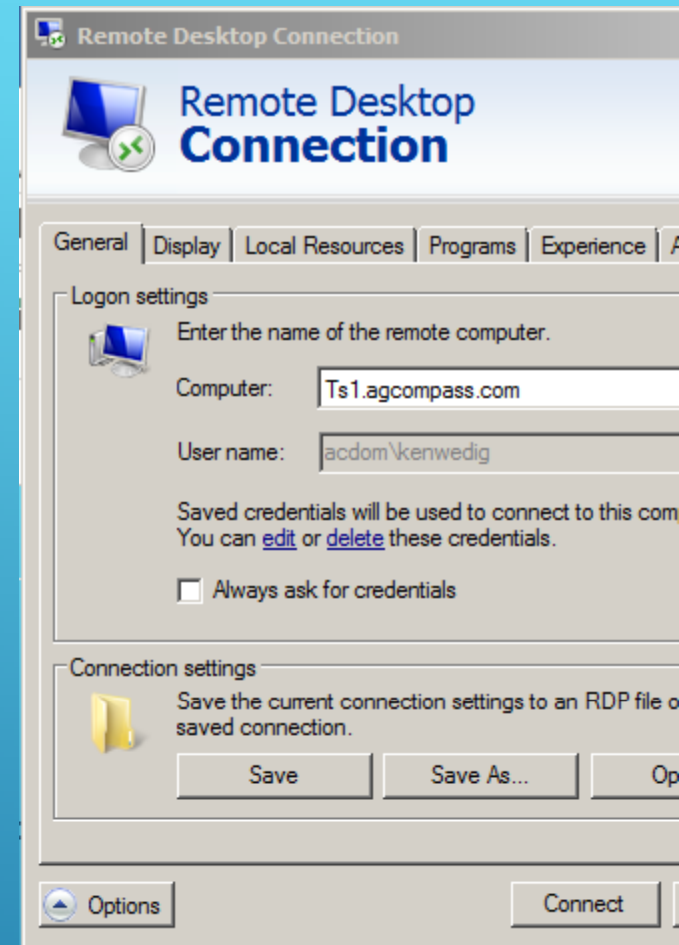
“Remote Desktop Connection” is the vehicle you use to connect to our server

Usually found in the Start → All Programs → Accessories

Computer is either TS1.Agcompass.com or
TS2.Agcompass.com

User Name / Password

Demo



CONNECTING TO AGCOMPASS

“Local Resources” TAB of “Remote Desktop Connections”

Printers = Off

Clipboard = ON

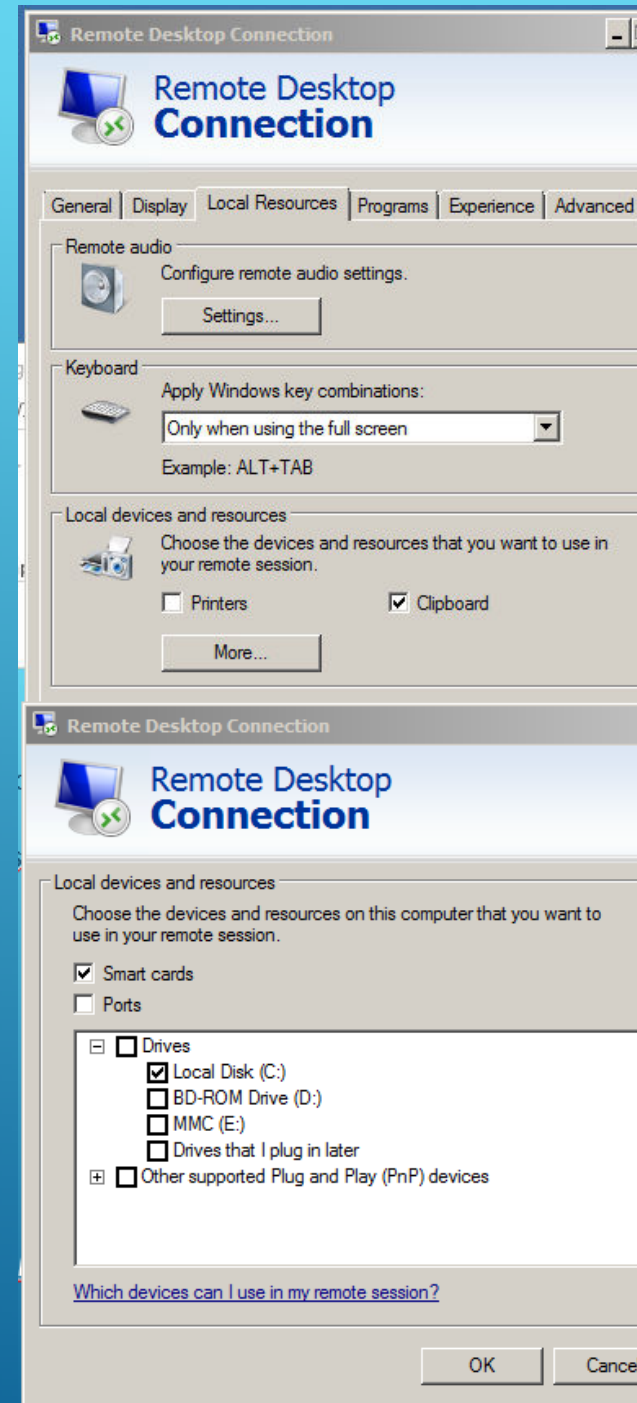
Click “More”

Local Disk C = ON

This makes it possible to Cut/Paste to the server or from the server to your local desktop

Demo

CONNECTING TO AGCOMPASS



ScrewDriver software from TriCerat
used to Print from Terminal Server

software must be loaded on any computer that needs to print
software is available at www.tricerta.com\sdclient

Just know if your computer is 32 or 64 bit
download appropriate software and run it
next time you login you will be able to print

PRINTING

The screenshot shows the TriCerat website interface. At the top, the TriCerat logo is on the left, and the tagline "Enhancing Enterprise Management of Desktops and Applications" is in the center. On the right, there are links for "Language" (with flags for German, Spanish, French, Japanese, and American English) and "Activate License • Re". Below the tagline is a navigation menu with items: Home, Products, Solutions, Industries, Downloads, How To Buy, Support, and Resources. A search bar is located on the left side of the page. The main content area is titled "Downloads" and contains a breadcrumb trail: "Downloads > ScrewDrivers Clients >". The central focus is a box titled "ScrewDrivers Clients" with the sub-header "CLIENTS FOR MICROSOFT WINDOWS" and the version "4.6.01 (8/26/2011)". Below this, there is a list of five download links, each with a "DOWNLOAD" button and a downward arrow icon. The links are: "MSI - Full Client Install (Includes both ICA & RDP Plugins) (3mb)", "MSI - Citrix ICA Client Plugin Only (2mb)", "MSI - Microsoft RDP Client Plugin Only (2mb)", "MSI - Microsoft RDP Client Plugin Only (x64) (2mb)", and "CAB - (Web Push Package) - Full Client Install (ICA & RDP) (3mb)". On the left side of the page, there is a sidebar with a "Search" box and a "Go" button. Below the search box is a list of links: Software, Updates and Trials, Printing Clients, Documents, Product Brochures, White Papers, and Case Studies. At the bottom left, there is a "Microsoft GOLD CERTIFIED Partner" logo.

Logging Off your "terminal Server Session is important

Go to Start → Logoff

If you do not do this the session you were running keeps running

Do not use "X" in top right corner.

LOGGING OFF



Currently we provide Microsoft Word/ Excel version 2003 for your use on the server

We have tested FBS, Theoris, Redwing Payroll, QuickBooks, TruckWin, Peachtree and others (if you have need for something let us know)

You can run "remote desktop connection" on Windows, Macs, Android, laptops, desktops, notepads. Almost anything.

I have a customer who is using a Samsung Galaxy Note which is 5.2 inch combination Tablet/Phone and he loves it.

APPLICATIONS



FBS can be run either TS1 or TS2

RedWing Payroll currently only runs on TS1

All of FBS modules can be run on server

Can link to feed mills or other external devices

FBS



Your files are backed up every night

If a restore is required for some reason you could lose one days of transactions you performed.

If for some reason you need an old version of a file that is a day or two old call me and I can probably retrieve it for you.

BACKUP



I am available on my cell phone most any time 563-528-1082

You can either call me or send a text message.

If I do not answer leave message and I will get back to you.

From time to time review "0-0 Agcompass Information" folder on your desktop. I try to update it with information that may be useful to you.

If for some reason you can not get ahold of me you can also call

Everett Chambers 608-343-0085 or Jed Thompson 309-7165-206

ELP



Additional Functions available by using our server

- ▶ Team Communications
 - ▶ You can create a folder and with my help I can assign who can read and/or update its contents.
 - ▶ This allows any of your team members to access the folder for sharing information.
 - ▶ This could be Employees, Vet, Bank, Scouting, etc.
- ▶ Integrate with other software
 - ▶ For Example - If you need to import data from say a feedmill we can do that.

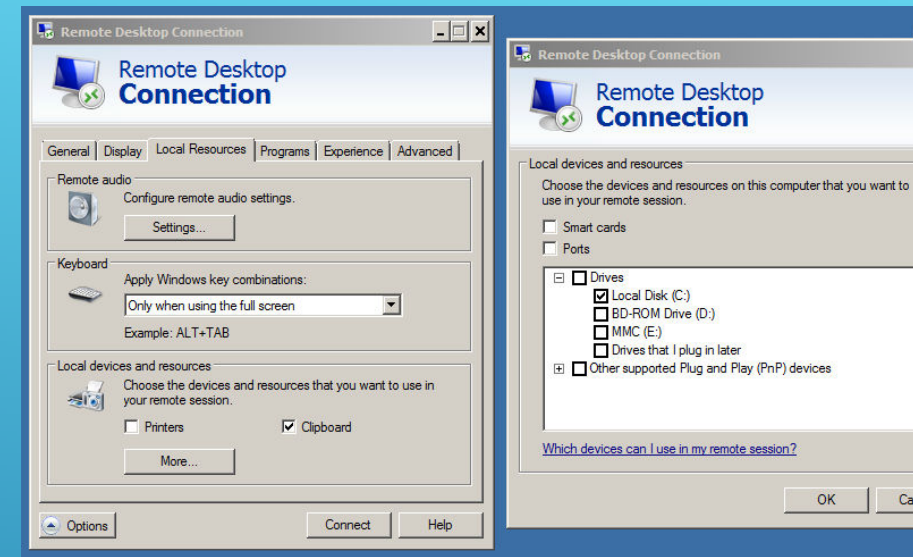
ADDITIONAL FUNCTIONALITY



Cut/Paste

- You can Cut and paste files either to server or to your local desktop
- In the “Remote Desktop Connection” that you use to connect to server at least one disk drive needs to be turned on

When there is a problem we can view your desktop with your permission and work with you to solve it



ADDITIONAL FUNCTIONALITY (CONT)

Never hesitate to call or email us with any input/request you may have.

We see AgComppas as a value proposition and if there is anything we can do for you to make it more useful just let us know.

We very much appreciate input and suggestions.

Kenneth Wedig 563-528-1082 Kenwedig@yahoo.com

Everett Chambers 608-343-0085 kalmia@centurytel.net

- Thank You

OUR INPUT