

Farm SeRVer™

- Farm SeRVer provides all the capabilities of FBS desktop applications in an economical, web-hosted subscription service.
- Connect to your data anywhere—enjoy the benefits of a high-performance network without the hassles of maintaining software or your own server.
- Tap into “virtual” data entry or controller services.
- It’s easy to transfer your FBS desktop software license to a Farm SeRVer host, and vice-versa.
- For a quote, contact FBS Sales at 800.437.7638 / Ext. 1

For Help With



Support: 800.437.7638/Ext. 2 or support@fbssystems.com



Training options

- Regularly-scheduled, free webinars
- PORK\$HOP, June 8, 2010, Des Moines, Iowa
- User Conference, August 25-26, 2010, Moline, Illinois
- Custom training on-site, over the web, or at FBS office any time

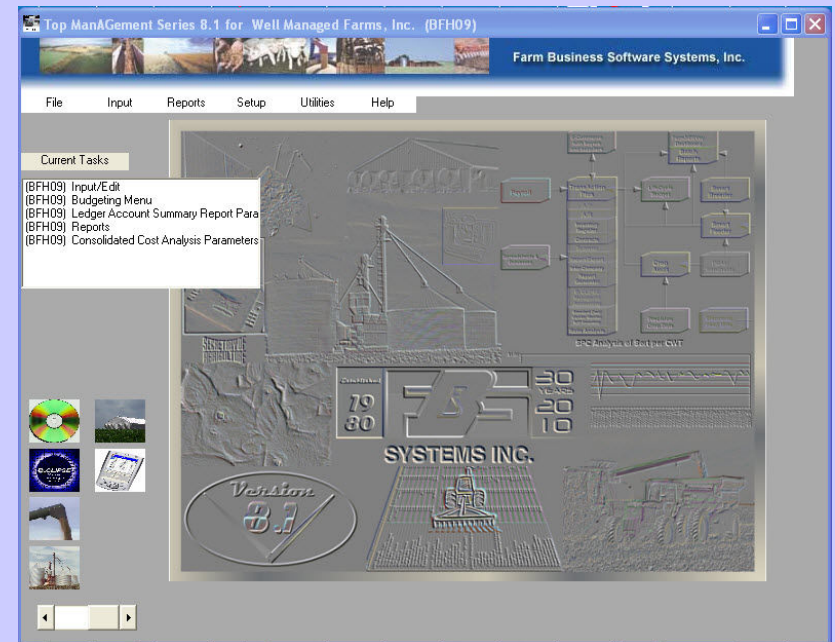


FBS Systems, Inc.

Technology integration that works.



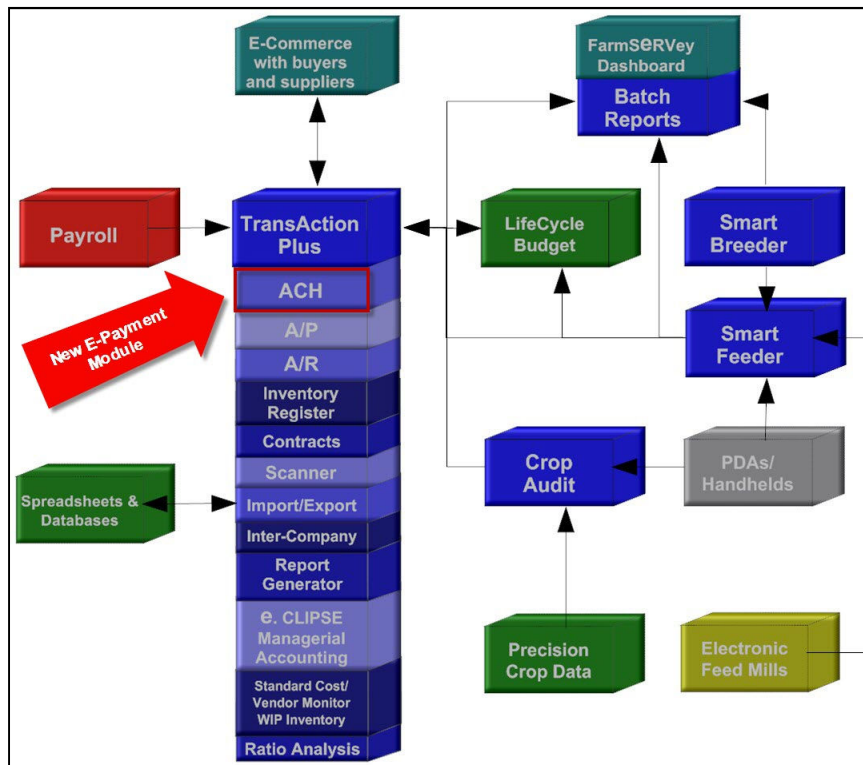
What's New in Version 8.1



www.fbssystems.com



Overview of V 8.1



Updated compatibility joins expanding power and flexibility.

The world's most integrated, automated and flexible farm management system now runs in the latest **Vista 64®** and **Windows 7®** environments thanks to Version 8.1's updated .NET platform. FBS Users have depended on this commitment to continuous improvement for nearly **30 years** and countless generations of computers and operating systems.

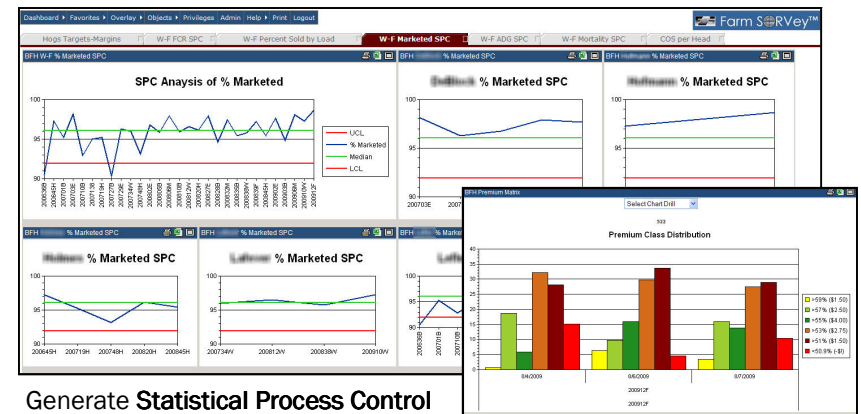
We encourage you to explore these new features in this booklet and by "test driving" them on your own computer (most are available as limited-life "demos"). You'll discover that each module works seamlessly with the rest of the FBS System to save time, reduce errors and provide a whole new level of analysis and collaboration to your management team.

- Added **recap by group** to **Breeding Production Report by Group**
- **Litter Report** includes columns for Genetics, Breeding Line, and Grand-parents.
- Can now **sort Sow Cards** using standard method of sorting for FBS detail reports: double click first or last row.



Automated Dashboard

View your favorite FBS reports or graphs in real-time through the web. Farm SeRvey automatically extracts data from your FBS application, spreadsheet or website and presents that information in exciting new ways.



Generate **Statistical Process Control (SPC)** charts from your data.

Drill down to detail.



Track **markets** and **margins** in real-time.

Sow Culling Report							
Reason	0	1	2	3&6	7+	Total	% of Total
Culled							
No fetal	9	3	1	2	4	19	6.79
Didn't breed 2nd time	8	1	4	10	10	33	11.79
Abortion	2	1	0	13	9	25	8.93
Bad udder	0	1	0	3	0	4	1.43
Farrow performance	0	0	2	14	34	50	17.86
Wearing performance	0	0	1	14	44	59	21.07
Uterine prolapse	0	1	3	3	0	7	2.50
Unsoundness	2	3	1	4	3	13	4.64
Lameness	0	0	0	1	0	1	0.36
8th parity	0	0	0	0	5	5	1.79
Unknown	0	1	0	0	1	2	0.71
Failed to conceive	2	0	1	4	6	13	4.64
Total Culled	23	11	13	68	115	231	82.50
Died							
Difficult farrow	0	1	0	3	1	5	1.79
Vaginal prolapse	0	0	0	1	0	1	0.36
Uterine prolapse	0	0	0	2	2	4	1.43
Down sow	0	0	0	1	0	1	0.36
Unknown	5	8	7	9	9	38	13.57
Total Died	5	9	7	16	12	49	17.50
Total Removed	28	20	20	84	129	280	100.00

New Sow Culling Report.

Mating/Services Report							
Partly / Description	One Mating	Two Matings	Three or More	One Service	Two Services	Three or More	
Total Number of services	29	4,922	2,636	6,866	718	3	
Known service results	29	4,922	2,636	6,866	718	3	
Returned to service	2	473	203	675	3	0	
Repeat service rate (%)	6.9	9.6	7.7	9.8	0.4	0.0	
Number farrowed	24	3,752	2,051	5,381	444	2	
Conception rate	93.1	90.4	92.3	90.2	99.6	100.0	
Farrowing rate (%)	82.8	76.2	77.8	78.4	61.8	66.7	
Ave. total born	12.3	12.8	12.5	12.7	12.5	4.5	
AM Mating	0	4,922	2,636	6,866	1,370	15	
PM Mating	29	4,922	2,636	6,866	1,436	9	

Added lines to **Mating/Services Report** for **breeding time (AM/PM)**.

Breeding Group Summary												
Date Bred	Sow ID	Par	Cyc	Stat	Days Open	Tech	Boar #1	Boar #2	Boar #3	No. Of Services	Est Farn	Date
01/05/2009	262315	1	1	G	0	20	T	T		2		Recycled
01/07/2009	262317	1	1	G	0	24	T	T		2		04/23/2009
01/06/2009	262319	1	1	G	0	20	T	T		2		04/28/2009
01/06/2009	262326	1	1	G	0	20	T	T		2		04/28/2009
01/08/2009	262328	1	1	G	0	24	T	T		2		04/30/2009
01/08/2009	262330	1	1	G	0	24	T	T		2		04/30/2009
01/06/2009	262332	1	1	G	0	21	T	T		2		04/28/2009
01/04/2009	262336	1	1	G	0	21	T	T		2		Culled

Breeding Group Summary

- Flags open sows in Estimated Farrowing Date column.
- Gilts no longer included when calculating Days Open.

Inventory Valuation Report							
Center	Description	Beg Gest	End Gest	Beg Pigs	End Pigs	Weaned	EU Change
10	1 SOW HERD	1,344	1,378	2,458	2,301	9.56	168.14
700	#2	2,205	2,194	3,123	3,661	9.88	429.27
Totals		3,549	3,572	5,581	5,962	9.76	605.56

New Inventory Valuation Report (displays Equivalent Unit changes to support E.CLIPSE Managerial Accounting).

General

- Vista 64 and Windows 7 compatible.
- 2-way MS Access<—>ODBC data conversion. Microsoft Access® is the default database used by FBS. The ODBC (Open Data Base Connectivity) option connects TransAction Plus, Smart Feeder, Smart Breeder and Crop Audit to industrial-strength databases like **MS SQL Server®** and **Oracle®**.
- Remote peer-to-peer desktop support . Your FBS Support technician can now come right to your desktop to assist you. (Free service for *Corporate*, *V.I.P.* and *Priority* service plans.)
- Prints list of function keys from **Help Menu**. (See screen on right.)
- Can export **Center** and **Ledger Account** setup definitions to **Windows clipboard** (by pressing [F11] function key).
- Automatically updates **FBS Help file** on work stations when running on a server. (Requires the preference setting below.)

Fbs Function Keys	
1	Report Hot Keys:
2	1. F10 as report parameter screen is the same as clicking OK
3	2. F4 displays report parameters from report screen
4	3. Scroll/page report:
5	a. Ctrl Up/Down arrow move up/down one line
6	b. Ctrl Page Up/Page Down moves to top/end of report
7	c. Page Up/Down moves 15 lines up/down
8	4. Export:
9	a. F10 = send area selected to print to clipboard
10	b. F11 = send rows selected to print ALL columns, to clipboard
11	c. F12 = send to report screen (same as clicking EXPORT button)
12	d. SHIFT F11 sends recap IF present
13	e. CTRL F10 send directly to Excel, all columns, selected range
14	f. CTRL F11 send directly to test file, all columns, selected range
15	4. Dashboard setup: F10 = directly edit this macro
16	(ONLY from Report Name column of Change Entry)
17	5. Scroll Wheel: mouse scroll wheel works if you click on grid.
18	However, this will disable some keys from #2
19	
Print Exit	

LM: Fbs Help File	c:\bswin\
Current Row: 9 of 113	
Valid values: Path to Fbs_Help.chm	Used by: Fbs Help
Desc: Microsoft Help no longer works on a network, so copy Fbs_Help.chm to local drive	

- Added “drill-down” flag for **Report Macros** changed.
- Displays **file count** of files being **downloaded from Web**.
- Changed sort in **Restore Data to File/Year/Month/Day** .
- Increased **Batch Reporting-Dashboard limit to 40** reports / definitions.
- Added **Sow Culling Report** to **Batch Reports / Dashboard**.

(TA+)	Matrix:\$2.50 (58.9-57.0% Lean)	User Defined Report
(TA+)	Matrix:\$2.75 (54.9-53.0% Lean)	User Defined Report
(TA+)	Matrix:\$4.00 (56.9-55.0% Lean)	User Defined Report
(TA+)	Matrix: -) \$1 (50.9% Lean or Less)	User Defined Report

BFH_010607.ZIP	
BFH_122308.ZIP	
BFH_122908.ZIP	
BFH_010109.ZIP	
BFH_010309.ZIP	
BFH_010509.ZIP	
BFH_010709.ZIP	
BFH_011709.ZIP	
BFH_011909.ZIP	

TransAction Plus

New E-Payment Module

Go “green” (eliminate checks, envelopes and stamps) with FBS’s latest productivity tool: the E-Payment Module.

Instead of printing and mailing checks, the E-Payment Module creates secure ACH (Automated Clearing House) transactions through your bank.

Here’s how FBS E-Payment works:

1. Set up a bank account as the “Originating” financial institution by recording the ABA routing numbers for the institution and its correspondent Federal Reserve Bank.
2. Record the ABA routing number and bank account numbers for each vendor you wish to pay electronically.
3. Pay invoices using the FBS Accounts Payable module, but do not print the check.
4. Specify the payment date range and Transmission Date and run the Export module.
5. A list of vendors and payments will be displayed. Confirm which vendors to pay and press “Save” to create a “NACHA” export file.
6. Log on to your financial institution’s website and transmit payment.
7. E-mail remittance report to vendor.

Cost: \$395.00 for first bank account, \$95.00 for each additional bank. Accounts Payable recommended.

Smart Breeder Input

Row	Date	Parity	Activity	No.	Weight	Ave.
27	07/27/2006	2	Litter Weaned	10	109	10.50
28	07/07/2006	2	Pigs Died	3		
29	07/06/2006	2	Litter Farrowed	14	0	13.00
30	03/13/2006	1	Bred To: T			
31	02/16/2006	1	Litter Weaned	11	117	11.00
32	01/23/2006	1	Pigs Died	1		
33	01/24/2006	1	Litter Farrowed	12	0	12.00
34	10/02/2005	0	Bred To: T			

Added **Edit Baby Pig Deaths** to Breeding Input by Sow.

Can use **Julian date** for breeding input (see Setup | Breeding | General to change).

Option to **convert Insight baby pig death loss** only.

New Breeding event: **Heat No Service**.

Reports

New preference so that **Sow/Litter Report Generator** will use the **same set of reports** definitions for all farms (useful for service bureaus).

On-Farm Feed Mill

Feed Office Pro Interface matches Alternate ID with FBS ID

- Must use F.O.P. Revision #3 production export routine.
- Matches F.O.P. Auxiliary Group ID with FBS Group ID.
- Matches F.O.P. Auxiliary Formula ID with FBS Ration ID.
- Matches F.O.P. Auxiliary Ingredient ID with FBS Ingredient ID.

Prints rations in one column instead of two.

Commercial Feed Mill

- Handles new **AgVantage** format for ration and location names.
- Displays **bad contract numbers**.
- Maps ingredient **"DISC-1"** to **discount ledger account** (previously only used by Hubbard file).
- Matches **Feed Office Pro Auxiliary Formula** and **Ingredient IDs** to FBS Ration and Ingredients.
- Added mill file verify check.
- Option to save feed invoices as **SF Buy & Dispense entries**.
 - Add Preference **"Commercial as SF Entry = N."**
 - Must check option, **"Save Feed Mill Manager in Smart Feeder."**
 - This option is **not recommended** because it bypasses inventory (and makes tie-out between accounting and production more difficult).

☒ Use Feed Mill Manager group id
☐ Use Feed Mill Manager date posted
☒ Save Feed Mill Manager in Smart Feeder
☐ Disable guaranteed rations
☐ Multiple bin locations, same ticket
☐ Use ingredient description

Packer Interface

- Changed interface to derive **Group** from **Location** map instead of mapping to Center/Location/Date.
- Modified Hormel interface to select either **Producer ID** or **Tattoo** fields to map to **FBS Location**.
- Added **Carcass Weight**, **Lean Percent** traits and **Weigh Charge** to **Swift Packer** interface.



Managerial Accounting

- Will always use **inactive Ledger Accounts**.
- Creates **standard cost entries** for **Consolidating Centers** not wipped (Useful for hedging and period costs).

Input/Edit

Vendors

- Increased limit from 5,000 to 7,500.
- Added active/inactive flag.

☒ Active vendor

Description file ignores (upper/lower) case when sorting descriptions for each ledger account.

General Data Entry

- Redisplays detail heading after selecting macro.
- Load Previous Entry (press F12 at Amount) will go back to the previous year.

Vendor selected: COUNTRY MUTUAL INSURANCE
 Macro selected: (C)AT2A3529385 HONDA AT

Check Printing

- Added check box to update vendor address during check/invoice printing.
- Cancelling check printing now returns to transaction.
- Can print Amount as text up to **"NINE MILLION NINE HUNDRED NINETY NINE THOUSAND NINE HUNDRED NINETY-NINE"** if there is room.
- Added preference for font size on checks.

(BFH09) Address Lines for Check
 Writing check number
 Address: 1230 45 St
 Address line 2:
 City: Wiggleyville
 State: IL
 Zip/Postal code: 60238
☒ Update vendor address

TA+ Check Font Size
 Current Row: 77 of 113
 Valid values: 6-15 (Default = 12) Used by: TA+ print checks
 Desc: Allow user to set font size on check (EXCEPT detail lines)

Check Clearing

- Option to include bank statement balance.

(BFH09) Clear Checks & Deposits
 Beginning date: 10/10/2008
 Ending date: 10/28/2008
 Bank account: 01 COUNTRY BANK
 Close with Yes (Y/N):
☒ Include cleared entries
 Ending bank balance: 7038.11

(BFH09) Clear Checks & Deposits

Number	Date	Vendor	Amount	Date Cleared	Type
1	07/01/2008	AMERENP	2,100.00	07/01/2008	C
22742	07/01/2008	BROOKLYN'S FOREST HOME RENT	21,500.00	07/01/2008	J
22742	07/01/2008	1ST FARM CREDIT SERVICES	10,767.28	07/01/2008	C
14	07/01/2008	1ST FARM CREDIT SERVICES	10,803.13	07/01/2008	C
14	07/01/2008	Electronic Federal Tax Payment	2,598.34	07/01/2008	C
1912	07/01/2008	WEDCHERRY PRO CO, INC.	871.44	07/01/2008	D
1913	07/01/2008	WEDCHERRY PRO CO, INC.	1,441.30	07/01/2008	D
1914	07/01/2008	WEDCHERRY PRO CO, INC.	332.71	07/01/2008	C
1914	07/01/2008	WEDCHERRY PRO CO, INC.	3,425.44	07/01/2008	D
07/2008	07/01/2008	U.S. E.S.	435.33	07/01/2008	C
07/2008	07/01/2008	Electronic Federal Tax Payment	24.22	07/01/2008	C
10/2008	07/01/2008	CAPITAL ONE BANK/ALMA	515.27	07/01/2008	C
10/2008	07/01/2008	AMERENP	2,501.00	07/01/2008	C

Cleared balance as of this entry: 3542.06 Bank balance cleared: 7038.11 Amount to clear: -7537.77
 (C)3 = 10/24/2008 Click on heading to sort Click on amount to sort

Scanner Interface

- Increased scanned file capacity to 2,000 per year.



Payroll Integration

- Imports hours from RedWing Payroll.
- Interfaces with RedWing Centerpoint™ Payroll.

TransAction Plus Reports

- Balance Sheet** can consolidate Divisions with multiple fiscal years. (Uses beginning/ending dates rather than fiscal year stored with Division to adjust net income and retained earnings.)

Divisions: 2 GRAIN DIVISION 5 PORK DIVISION

- Ledger Account Summary** heading displays Division Descriptions if two or fewer Divisions are selected (same logic as other reports).
- Ledger Detail Report** recaps by total income, expense, assets, liability and equity.

Vendor	Amount
Total Income	320,504.93
Total Expense	154,201.33
Total Assets	1,563,791.85
Total Liability	400,942.38
Total Equity	996,545.87

Accounts Payable/Receivable

A/R Statements

- Displays **expense** and **asset** account balances as **positive numbers**.
- New **Line type 34** (Invoice #, Date, Amount Paid, Invoice Amt., Amt. Due).

A/P and A/R Detail Reports Option 7 (Invoices with Payments) now flags entries from invoices open over 365 days to days based on Cash Look Back Month preference.

Contract Module

- Added Project** to crop contacts.
- Added drill-down** from reports to Contract Setup screen.

Contract Report

- Can **restrict by Center** for crop and livestock Product types
- Added error trapping to for bad value in contract creation date.

User Defined Reports

- Location Range** added to report parameters.
- "Sales Group" 1-6 Source ignores movements.**
- "Feed Days"** added to Sales Group 1-6 (First Date Sold-First Date Fed).

Load3 Group	200832M	200838W	200839F	200845H	200902E	200906M	200910W	200912F
Load3 Paylean Days	15	15	25	30	9	14	19	15

Smart Feeder Budgeting

Planning Module can select **Current Center** by clicking on list of **Centers w/Planning Data**.

Budget Feeding Cost Analysis added a switch to set method for feeding pricing.

- Normal default is (fixed) "Budget Price."
- Checking box varies feed costs to match LifeCycle Budget table.

(BF109) Period Summary					
	Period	YTD	Budget	Variance	% of Actual
Number	1,000	7,888	8,334	-446	105.65
Total Weight	255,600	2,086,140	2,209,281	-123,141	105.90
Average Weight	255.60	264.47	265.09	-0.62	100.23
Value	101,502.32	841,654.58	896,688.96	-55,034.38	106.54
Value/Animal	101.50	106.70	107.53	-0.83	100.83
Value/Lb of Live	29.71	40.26	40.89	-0.24	100.69

(BF109) Period Summary					
	Period	YTD	Budget	Variance	% of Actual
Feeding					
CORN-RV lbs	704,165	2,488,689	2,715,155	-226,466	109.10
CORN-RV value	55,141.57	192,050.70	145,454.72	46,595.98	75.74
CORN-ILLINI lbs	73,130	320,424	274,783	45,641	85.76
CORN-ILLINI value	3,919.76	17,900.41	14,720.53	3,179.88	82.24
WHITE GREASE lbs	33,831	115,428	123,402	-7,974	106.91
WHITE GREASE value	7,694.77	25,176.81	43,190.84	-18,014.03	171.55
Total CORN-ENRGY lbs	811,125.78	2,924,540.81	3,113,340.38	-188,799.57	106.46
Total CORN-ENRGY val.	66,756.10	235,127.92	203,366.09	31,761.83	86.49

Period Summary

- Can select LifeCycle Budget Scenarios.
- Added Variance and Percent of Budget columns.

Rate of Gain Table

- Can export tables to Excel.
- Easier-to-read format.
- Displays Ending Weight and Days on Feed.
- Sales Spread moved to right.
- Forces Sales Spread to balance to 100%.

(BFH09) Change Rate of Gain Table

Number: C1
Description: IV W-F 10-270 NEW

Phase	Starting Weight	ADG	Days in Period	Gain/Animal	Feed Elt.	Pounds of Food	Ration	Load	Sales Days	Sales Percent
1	10	0.10	1	3.10	7.10	0.71	L111 UC H1 11< lbs	1	-32	10.00
2		1.67	3	5.00	1.10	5.51	L112 UC H2 11-15 lbs	2	-28	17.00
3		0.50	10	5.00	1.36	6.82	L113 UC H3 15-20 lbs	3	-21	21.00
4		1.43	7	13.00	1.56	15.64	L114 UC H4 20-30 lbs	4	-14	26.00
5		1.02	11	20.00	1.53	30.51	L115 UC H5 30-50 lbs	5	-7	16.00
6		2.14	14	30.00	1.88	56.35	L300 LG 1.15 50-80 lbs	6	0	10.00
7		2.35	17	40.00	2.21	80.27	L301 LG 1.35 80-120 lbs			
8		1.90	21	40.00	2.34	93.42	L302 LG .95 120-160 lbs			
9		2.11	19	40.00	2.60	107.73	L303 LG .95 160-200 lbs			
10		2.00	20	40.00	3.00	120.14	L304 LG .75 200-240 lbs			
11		1.43	21	30.00	3.35	101.65	L305 LG .7 240-300 lbs			
12										
13										
14										
15										
16										
								Total	100.00	

Ending weight: 270
Days on feed: 144

Sales spread: days (144) from total rate of gain days (144)

Smart Feeder Reports

(BFH09) Feeding Cost Analysis - Budget W-F

	ACTUAL VALUE	BUDGET VALUE	ACTUAL PER HEAD	BUDGET PER HEAD	ACTUAL PER CWT	BUDGET PER CWT
Feed	548,077.46	854,716.66	43.07	76.45	16.39	28.83
GMD	37,847.33	37,825.65	2.97	3.38	1.13	1.28
Feed Adjustment	365,332.33	13,113.98	28.71	1.17	10.92	0.44

Feeding Cost Analysis

- Allows Grind, Mix, Delivery entries to be included on expense lines (For budget-actual comparison).
- Added export to clipboard from Setup screen.

Phase	Ration	Description	Budget Amount	PO Feed	Actual Amount	Order Date	Delivery Date	Pig I
8		PHASE TOTALS	62.07	30.00	69.83			23
9	06011	F-6 STF-HFB	63.54		15.98	03/10/09		21
9	06011	F-6 STF-HFB		20.00		03/03/09		7
9	06011	F-6 STF-HFB		23.96		03/10/09		6
9	06011	F-6 STF-HFB		24.00		03/10/09		
9		PHASE TOTALS	63.54	24.00	39.94			13

2,177 in to print: Date

Close Print Range Printer Setup Export Next Error

Feed Budget Report adds "Next Error" button for actual feed greater than feed purchase order.

Ticket/Ration Report flags Grind & Mix entries to feed mill delivery account as "Delivery."

Ingredient Summary to includes purchases that have both zero value as well as zero quantity.

Lower of Cost/Market column added to Feedlot Performance Monitor.



(LOR09) Balance Sheet from Ledger Accounts - Scenario 1 Baseline

Acct.	Description	12/31/2009
	CURRENT ASSETS	
10010	MNB Checking	676,745.73
10200	Hedging Account	8,345.00
	Total CURRENT ASSETS	685,090.73
	INVENTORY	
11200	INV Crop Harv/Store	628,145.94
11400	INV Seed	9,138.00
11450	INV Chemicals	3,176.60
11800	INV Fertilizer	140,572.41
13000	Prepaid Expenses	2,900.00
	Total INVENTORY	783,932.95

(LOR09) Balance Sheet from Ledger Accounts - Scenario 1 Baseline ...

Edit	Scenario	Date	Vendor	Cen.	Amount	Quantity	Weight
14500	1	08/31/2009		2	-23,278.00	-226.00	103.00
15000	1	08/31/2009		2	62,444.00	624.44	100.00
	1	08/31/2009		2	22,601.00	226.01	100.00
	1	10/15/2009		5	-354,015.20	-40,229.00	8.80
17000	1	10/15/2009		1	531,765.00	163,620.00	3.25
17100	1	10/15/2009		5	321,832.00	40,229.00	8.00
17760							
18000			Corn Inventory	1	543,283.06	163,620.00	3.32
18500			Alfalfa Inventory	2	63,295.00	658.45	96.13
			Green Peas Inventory		-225.52	0.00	-225.52
			Sweet Corn Inventory	4	-23.40	-0.26	90.00
			Soybean Inventory	5	21,816.80	6,000.00	3.64
			TOTALS		628,145.94	170,278.19	3.69

22000 Total CURRENT LIABILITIES 200,000.00

LONG TERM LIAB

24020	Credit Cards
24030	Notes Pay LT - AgStar
24080	Notes Pay LT - Other

(CCC09) Income Statement: FFSC Format - Scenario 1 Base

Acct.	Description	Current Period	LCB Period	Current YTD
-------	-------------	----------------	------------	-------------

- Pro Forma Balance Sheet with drill-down to inventories.

- Pro Forma Income Statement with Actual-to-Budget comparisons.

- Numerous logic and display enhancements.

(CCC09) Income Statement: FFSC Format - Scenario 1 CCC Baseline

Acct.	Description	Current Period	LCB Period	Current YTD	LCB YTD
	INCOME				
32000	Crop Sales	65,132.82	0.00	481,093.34	322,355.92
36000	Government Payment	11,271.00	11,520.00	14,450.00	14,699.00
40000	Other Revenue	0.00	0.00	3,834.00	0.00
40500	Miscellaneous	0.00	0.00	466.17	466.17
49300	Dividend Patr Cash	656.46	0.00	6,603.37	5,946.91
	TOTAL INCOME	77,060.28	11,520.00	506,446.88	343,468.00
	CHEMICALS - Crop				
62005	CH CIP Chem NonLink	0.00	0.00	0.00	-13,035.69
62020	CH CIP Ch Inv Linked	0.00	0.00	15,517.73	13,686.94
62030	CH CIP Chem LL Reimb	0.00	0.00	-1,245.00	-1,107.65
	Total CHEMICALS - Crop	0.00	0.00	14,272.73	-456.40
	CUSTOM HIRE				
64005	CH NonLinked - Drying	0.00	7,240.00	374.67	7,440.00
64010	CH Linked	4,025.69	0.00	4,025.69	0.00
	Total CUSTOM HIRE	4,025.69	7,240.00	4,400.36	7,440.00
	DEPRECIATION				
66000	DEPRECIATION Prod	7,707.51	0.00	30,830.04	0.00
	Total DEPRECIATION	7,707.51	0.00	30,830.04	0.00
	FERTILIZER & LIME				
72005	F&L NonLink	0.00	0.00	0.00	-15,000.00
72020	F&L Inventory Link	34,185.59	35,849.00	49,185.59	35,849.00
	Total FERTILIZER & LIME	34,185.59	35,849.00	49,185.59	20,849.00
	FUEL OIL, GAS, LP				
73005	F.O.G.L Production	9,915.21	3,105.00	19,475.32	25,689.16
	Total FUEL OIL, GAS, LP	9,915.21	3,105.00	19,475.32	25,689.16

Crop Audit Plus

Input/Edit

Change Field Operation

Active Operation: ☒

Number: 62

Description: CORN COMBINE

Rate: 23.00

Unit: A = per acre

Fuel: N = No (no fuel)

Center #1: CRPHRV CROP HARVESTING

Center #2: ** none **

EPA Number:

Unit #2: 0 = None

Rate #2:

- **Harvest Routine Field Operations** increased from 10 to 20.
- **Field Operation Setup** allows inactive Centers for Operation Centers.
- **Main Chemical Setup screen** displays EPA Number and current Inventory.

AU in Pur	Appl. Unit	Get Price	Int Id	EPA Number	Inventory
7.00	OZ	0.00	68	241-306	0.00
1.00	OZ	0.00	75	59639-3	0.00
8.00	PINTS	175.00	78	59639-3	0.00
4.00	PINT	0.00	71	3125-314	0.00
1.00	LB	17.40	70	3125-325	0.00
16.00	OZ	25.17	76	3125-402	0.00
8.00	PT	0.00	69	264-333	0.00
10.67	GAL	0.00	130		0.00
1.00	OZ	2.81	ATUS	241-350	0.00

(BFH09) Crop Center/Field Edit

Date: 05/07/2009

Center: 091 09 Corn

Project: 10 09 Corn / 120 (091_10)

Field: 10 THE 120

Macro: 0 None

Acres: 37.90

Hours: 0.00

Time Finished: 07:08 PM

Comment: HR-Long Rows/East Sh

Budget Record: ☐

Input hours by line: ☒

Carrier Quantity:

Save As Macro

Adjust Carrier

Line	Entry Type	Operation	Appl Rate	Appl Method	Value	Fuel	Fuel	Hours
1	Seed	6345 DKC 63-45 AR RF	16.000	33.773 086	3.774 40			
2	Chemical	27 AZTEXC	275.000	7.256	550.00			
3	Operation	20 PLANTER		A = Per Acre	360.05			
4	Operation	905 John Deere 4960		H = Per Hour	0.00	0.00	0 Dyed Diesel	4
5	Operation	203 CHUCK ADAMS		H = Per Hour	0.00			
6	Operation	13 SUNFLOWER		A = Per Acre	189.50			
7	Operation	901 John Deere 8640		H = Per Hour	0.00	0.00	0 Dyed Diesel	
8	Operation	204 BRANDON HOFM		H = Per Hour	0.00			

Save Cancel Insert Line Delete Line Enter Long Description Print Add Operations Delete Entire Record

Center/Field (Macro) Input

- **Enter hours by line** (rather than "global" hours for all operations).
- **Seed/Chemical/Fertilizer application rates** changed from 2 to 3 decimal places.
- **Enter Long Description** button.

Reports

Crop Inventory Report

- **Projects without activity** removed from Contract/Project recap.
- Added **drill-down** to Contract setup.

Crop Cost Analysis Report

- Added **Export to Clipboard** from Setup screen.
- Includes option to **select report line** for **Percentage Divisor**.
- Changed display on report input parameters to better indicate if project range/exclude date needed.

Change Report Line (Production)

Source: 19 = Shadow Expense Account

Description: Transportation

Divisor: 3 = Total produced

Section type: 2 = Actual (for field operations)

Ledger Account: TRANS

Center Range: TRANS

(Use for percent calculation): ☒

Use crop operation costs: ☐

Use CAIV production quantity: ☐

Only include direct costs: ☐

Restrict actual by Division: ☐

Include service center in PTD: ☐

Filter out internal transfers: ☐

Percentage from selected row: ☒

Examine report on screen: ☒

Smart Feeder

Input /Edit

- Increased **Ingredient** and **Ration** limits from 500 to 600.
- Can **export Ingredients** to Excel .
- Can print range of Rations from Setup screen.

(BFH09) Rations to Print

Rations to Print: 0-222222

Print Ingredient by Weight: ☒

Print Active Rations: ☒

Print Inactive Rations: ☒

OK Cancel

4419 G 200/260 HL 1500
4420 B 40/80 HL 1500
4421 B 80/120 HL 1500
4422 B 120/200 HL 1500
4423 B 200/260 HL 1500
4001 F1 DDG 50/80
4002 F2 DDG 80/120
4003 F3 DDG 120/160
4004 F4 DDG 160/200
4005 F5 DDG 200/240
4006 F6 DDG 240/MKT
5013 FS 13% BMD
5014 FS 14% BMD
5015 FS 15% BMD-AU
5016 FS 16% 200 AU
5017 FS 17% 200 AU
5018 FS 18% 400 AU
5116 FS 16% BMD
5117 FS 17% BMD
3999 GRIND/MIX/DELIVER