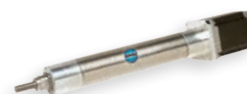


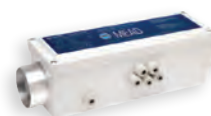


Product Guide



Setting a new standard for:

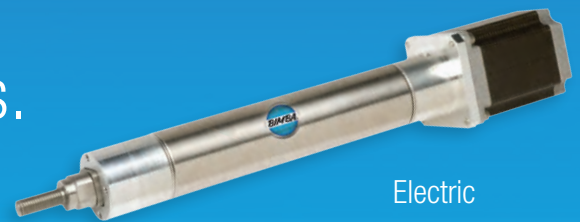
- Pneumatic Actuators
- Electric Actuators
- Hydraulic Actuators
- Valves
- Air Preparation
- Fittings & Manifolds
- Safety & Production
- BimbaBreakthroughs™



Leaders In Actuation



Thousands of solutions.
Thousands of configurations.
Endless applications.



Electric

Solutions

- Pneumatic
- Hydraulic
- Electric
- Air Preparation
- Valves
- Safety
- Production
- Motion Control
- Custom Designs

Industries & Applications

- Medical
- Food & Packaging
- Agriculture
- Semiconductor
- Aerospace
- Robotics
- Energy
- Window & Door

Challenges Addressed

- Space Constraints
- Wash-Down
- Corrosive Environments
- Poor Air Quality
- Heavy Side Loads
- Position Sensing



Air Preparation



Pneumatic

PNEUMATIC ACTUATORS

Bimba offers an industry leading selection of bore sizes and options for pneumatic actuators. Catalog models can be manufactured in 4 days or less, and are available worldwide through our distribution network.

Round Line

- 12 non-repairable bore sizes available from 5/16" to 3".
- 6 NFPA mounting styles available for Double-Wall® cylinders.
- USDA-approved repairable stainless steel cylinders available in 1-1/2" to 8" bores.
- Centaur repairable round line cylinders built to match tie-rod cylinders performance and durability, and available from 1-1/8" to 3" bores.



Double-Wall®



Repairable Stainless Steel



Centaur

Compact

- Bore Sizes: 9/16", 3/4", 1-1/16", 1-1/2", 2", 2-1/2", 3", 4".
- Repairable Flat-I® design available in 8 bore sizes from 9/16" to 3".
- Low profile linear slide actuators available in bore sizes ranging from 6 to 32mm.



Twin Bore



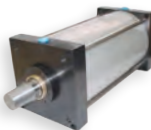
EF-I



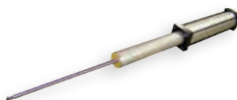
Flat-I®

NFPA

- Bore Sizes: 1-1/2", 2", 2-1/2", 3-1/4", 4", 5", 6", 8", 10", 12".
- 3-Position, Telescoping, Back-to-Back, Triple-Rod Non-Rotating, and Multi-stage models are just a few of the models offered.
- Models available in tie-rod, round body, or extruded body designs.



TRD TA Series



TRD Telescoping Cylinder

ISO

- ISO 6431 available in 6 bore sizes from 32mm up to 100mm.
- ISO 6432 available in 6 bore sizes from 8mm to 25mm.
- Rapid design and delivery time for custom modifications.



ISO-6431



ISO-6432

Guided

- Bore Sizes: ET and MFD series from 12 to 63mm, T and TE series from 9/16" to 3".
- Available in 8 different models, for both standard and heavy duty applications.



Guided Thruster

Rodless

- 3 magnetically coupled models and 1 "band type" model available, in 5/16" to 2" bores.
- Linear motion within half the length of rod style actuators.



Ultram® Band

Rotary

- Rack and pinion rotary motion for commercial and industrial applications.
- 5 single and double rack models in bore sizes from 9/16" to 2", with standard rotation up to 360°.



Rack & Pinion Pneu-Turn®

Position Control

- Linear and rotary actuators available in 1-1/16" to 3" bores.
- Closed loop pneumatic control systems and programmable electronic controller for use with position feedback actuators.



Servo Pneumatic Position Control System

This is a sampling of the most popular Bimba solutions available. To explore the full product offering, go to bimba.com



ELECTRIC ACTUATORS

Bimba's Electric Actuator line provides precise control of motion through both custom and off-the-shelf design. The flexibility and options available are ideal for high precision applications.

Round Line

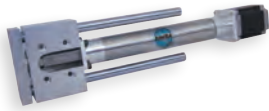
- Bore Sizes/thrust ranges: 1-1/2"/up to 75 lbs., 2"/up to 150 lbs., 3"/up to 350 lbs.
- Flexible: Choose from no motor, or AC or DC stepper motors.



Original Line Electric®

Guided

- Bore Sizes: 1-1/2", 2", and 3" with many thruster block and bearing combinations available.
- Capable of side loads up to 1,000 lbs. and moment loads exceeding 3,600 lbs.



Original Line Electric® Thruster

Rodless

- High load positioning accuracy and control with precise motion.
- Ball and lead screws available.
- Choose from no motor, DC motor, or DC step motor.



Ultram® High Load Electric

Motors and Controls

- Stepper motors and drives available.
- Drives accept step and direction inputs from 200 to 20,000 steps per revolution of the motor.



DRV Series Drives

HYDRAULIC ACTUATORS

TRD builds hydraulic cylinders with a variety of NFPA mounting options, with operating pressures up to 3,000 PSI. Your cylinders ship in 2 to 3 days with our industry leading delivery times.

Light Duty

- 2 models from 5/16" up to 3" bores for pressures up to 250 PSI.
- 1-1/16" to 3" bore model in 3 styles for pressures up to 500 PSI.



Bimba 500 Hydraulic

Heavy Duty

- For applications requiring supply pressures up to 3,000 PSI.
- Bore Sizes: 1-1/2", 2", 2-1/2", 3-1/4", 4", 5", 6", 8".



TRD HH Series

Medium Duty

- For applications requiring supply pressures up to 1,500 PSI.
- NFPA tie-rod cylinder design available in 1-1/2", 2", 2-1/2", 3-1/4", 4", 5", 6", and 8" bores.



TRD MH Series



VALVES

Mead and Pneumadyne offer standard pneumatic valves, binary valves, solenoid valves, foot, hand, or button valves, and custom valves designed for your specific application.

Directional Control Valves

- These state-of-the-art designed valves can provide enough flow to power up to 4" bore cylinders.
- Air pilot operated, mechanically operated, or solenoid operated models available.



MFD 4-way Solenoid Valve

Specialty Valves

- Designed for various applications including mobile equipment and safety.
- Products include PTO valves, binary valves, shuttle valves, check valves, hand lever valves, and more.



Push Button Valve

Flow Control Valves

- Flow controls offer metered flow in one direction, free flow in the opposite direction.
- 8 series available in zinc die cast or composite bodies for air and hydraulic applications.



FCPM Series

Solenoid Valves

- Available in 2, 3, or 4-way, 2 or 3-positions, normally opened or normally closed.
- Fast response times and high flow rates make them suitable for numerous applications.



Solenoid Valve

AIR PREPARATION

Bimba and MFD air preparation equipment feature the standard Filter, Regulator, Lubricator, and Assembled Combinations (FRLs). They are available from 1/8" up to 1-1/2" NPT. Accessories include mounting hardware, pressure gauges, shut-off valves, soft-start valves, and more.

Filters

- Available in 5 different series with port sizes ranging from 1/8" NPT to 1-1/2" NPT.
- Models include general purpose air filters, oil removal filters, or vapor removal filters.



Air Filter

Lubricators

- Available in 5 different series with port sizes ranging from 1/8" NPT to 1-1/2" NPT.
- Transparent polycarbonate or metal bowls are available.



Air Lubricator

Regulators

- Industrial and Global Series available with port sizes ranging from 1/8" NPT to 1-1/2" NPT.
- Pressure range: 8 to 300 PSIG.



Pressure Regulator

Combination Units

- Integrated design combines filter and regulator into one product.
- Assembled combinations feature the filter, regulator, and lubricator, and are pre-assembled by Bimba.



FRL-Combination



FITTINGS & MANIFOLDS

Pneumadyne's fittings and manifolds provide essential links between components in pneumatic systems. Simply thread fittings into the manifold ports to produce an organized method of supplying multiple lines from a single source.

Push-to-Connect

- Connectors, elbows and tees for 1/8" to 3/8" tube ODs.
- Available in electroless nickel plated brass and 316 stainless steel.



Elbow Fitting

Manifolds

- Aluminum, brass, stainless steel, polypropylene, and nylon materials available.
- Precision machined to offer a variety of sizes/configurations, from 2 to 10 stations.



Stainless Steel Manifold

Threaded Fittings

- Adapters, bulkheads, couplings, elbows, tees and plugs are available.
- Several configurations are electroless nickel plated for corrosion resistance.



Threaded Tee

Barb Fittings

- Coupling, cross, elbow and tee configurations available.
- Single and double barb designs available in inch or metric, in a variety of materials.



Straight Connector

SAFETY & PRODUCTION

The Bimba enterprise of companies is committed to a safe workplace. This commitment is demonstrated through its product offerings that help ensure worker safety in all of our customers' facilities.

- **2-Hand Anti-Tiedown**
- **Air Impact Hammer**
- **Air Reservoir**
- **Air/Oil Tanks**
- **Boosters/Intensifiers**
- **Collet Fixtures**
- **Lockout/Tagout Valves**
- **Presses Panel Mount Valves**



2-Hand Anti-Tiedown Control Valve



Pneumatic Isolation Valve



Air-to-Air Booster



Bench Top Air Press

BIMBABREAKTHROUGHS™

Bimba's Design Center capabilities have been one of our core characteristics resulting in innovation for our customers. Innovation for one customer sometimes provides us with a breakthrough that all our customers can leverage, we call these BimbaBreakthroughs™.

- **Rate Controls**
- **Pinch Valves/Other**
- **Hand Tools**
- **Special Intensifiers**
- **Grippers**
- **Manifolds**
- **Pumps**



Hand Pump



Gripper



Pinch Valve

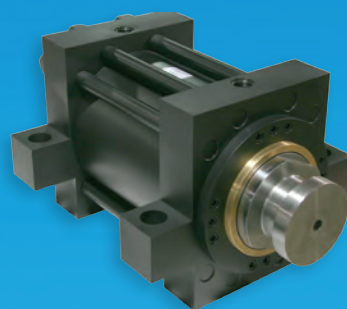


Rate Control



Hand Tool





NFPA & Hydraulic



Manifolds



Valves



Fittings

Your stocking distributor is:



Bimba Manufacturing Headquarters

P.O. Box 68 Monee, Illinois 60449-0068

Phone: 708-534-8544 Toll Free: 800-44-BIMBA Fax: 708-235-2014

Email: cs@bimba.com www.bimba.com

BIMBA BRANDS | MEAD | MFD | PNEUMADYNE | TRD

PNEUMATIC • ELECTRIC • HYDRAULIC ACTUATORS FITTINGS — MANIFOLDS — VALVES — AIR PREPARATION — SAFETY & PRODUCTION



Worldwide distribution means there is a professional stocking
Bimba distributor nearby ready to service your needs.



National
FLUID POWER
Association®
MEMBER