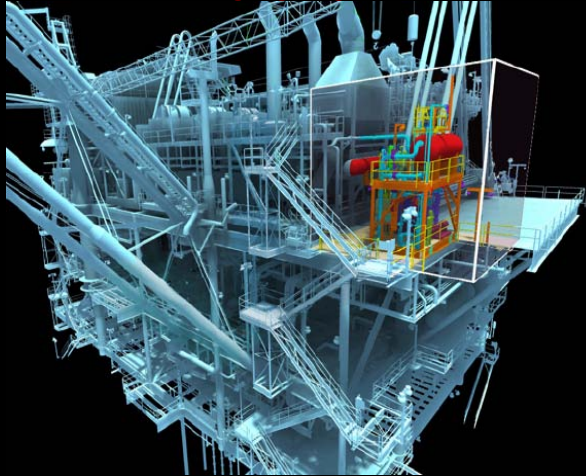


ZScape™ Digital Holographic Prints

Accurate, Engaging and Portable 3D



Aveva Review '.obj' rendered in ZScape preview software

Accelerate decision-making and reduce costly errors

Enable technical and non-technical stakeholders to make informed decisions faster. ZScape prints offer 360 degree viewing, so even diverse teams can quickly understand. Users can view multiple perspectives and understand the total project immediately, overcoming the typical challenges of 2D documents and 3D fly-throughs.

Leverage your 3D data and workflow investments

Now you can easily get 3D information out of the computer and in front of your project team. Our holographic preparation software can accept many engineering and design software file export types and laser scans. And we don't require "watertight" prep files, unlike solid prototyping methods.

Proven solutions

Zebra prints are field-proven. Over 10,000 holographic images have been deployed. ZScape prints are used in the toughest conditions in the world to communicate complex 3D environments.

Portable and easy-to-use

ZScape digital holographic prints are illuminated from above, and require no special computers or goggles. Excellent for archiving key projects and phases in 3D, ZScape prints are lightweight, portable, and store flat.

Animated 3D documents for training and presentations

Channels and overlays allow multiple views in one print. It is easy to show training or project phasing information and alternatives. No need to worry about a computer or the latest software. 3D prints can be viewed virtually anywhere, using a Zebra-certified light source.



ZEBRA IMAGING®



ZEBRA IMAGING®

Zebra Imaging
ZScape™ Digital
Holographic Prints

About Zebra Imaging, Inc.

Zebra Imaging, Inc. is the recognized leader in 3D holographic displays. We have deployed more than 10,000 holographic prints globally, some in the most extreme conditions. Our technology dramatically improves situational awareness, collaboration and decision-making in government, engineering, surveying, and military applications. Founded by MIT Media Lab technologists, we maintain a strong IP portfolio and continue to push the limits of interactive visual experience. We have been listed as an Inc 500 Fastest Growing Private Company, and ranked in the Deloitte Fast 500 two years in a row.

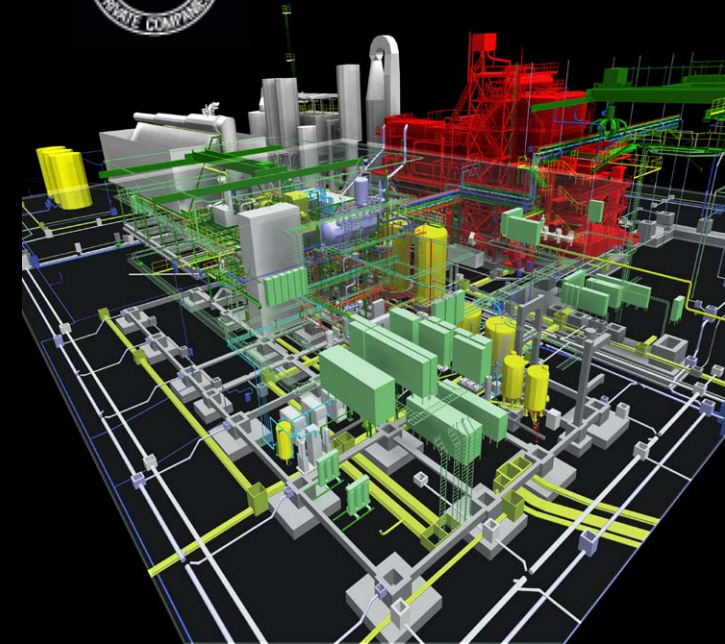


9801 Metric Blvd., Suite 200
Austin, TX 78758
Direct: 512-251-5100
Fax: 512-251-5123
information@zebraimaging.com

www.zebraimaging.com

Zebra Imaging, Zi, and ZScape are trademarks of Zebra Imaging Inc. All other trademarks belong to their respective holders. Copyright 2010.

GD-008357 Rev A



Digital Holographic Prints of Your 3D Data

We accept many 3D data types, including '.obj' exports from programs like AVEVA Review, 3ds Max, Maya, and SketchUp. Just export and re-import your data to confirm that your most important attributes have transferred as you intend. We also accept '.dwg' exports from programs like Revit and AutoCAD, and LIDAR laser scan survey formats like '.xyz', '.las', and Leica Cyclone '.pts'. If you are using another data format, let us know. We are constantly evolving our support capability.

Once we receive your data and image framing, we will import your data into our proprietary software. In a few days you will receive previews. Once you have approved these snapshots and 360 degree movie preview, your holograms will be shipped to you in about 7-10 days.

Easy to Light

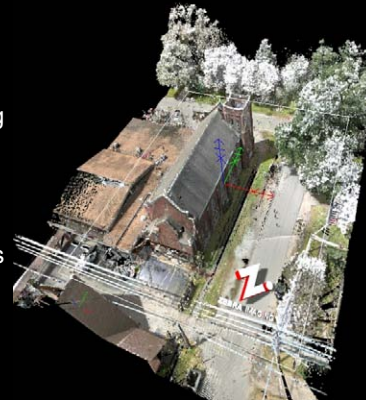
Appropriate lighting is key, and four basic factors impact image brightness and accuracy: light source (i.e., type, color, etc.), lighting distance, lighting angle, and ambient lighting (best when ambient light is low, as in a slide presentation). The easy-to-use Zebra Portable Light Kit supports many print sizes and options.

ZScape™ Holographic Prints

Walk around the images for full 360 degree view and virtually infinite perspectives, replacing multiple renderings

Display accurate colors and fine details that are impossible with physical models.

HDS laser scan survey rendered in ZScape preview software

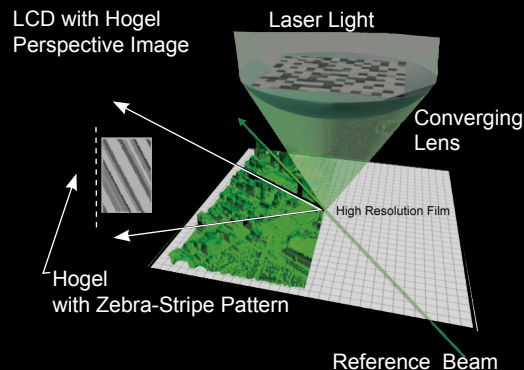


Explain complex details and project phases easily. ZScape channeling supports multiple images on one print.

How it Works

Vivid 3D images appear to “float” above and below the film plane and can be seen from multiple perspectives simultaneously.

Tiny holographic elements (called ‘hogels’) are recorded on the film by lasers and generate hundreds of thousands points of light. The points of light create a seemingly solid image in space when lighted from above.



Transforming Industries with Proven Technology



ZScape print of Seattle created from Maya

“Zebra Imaging holograms help us communicate very complex designs to our clients and other consultants by allowing them to see in 3D...saving us time and money.”

- **Bridgers and Paxton Consulting Engineers**

“Zebra Imaging is turning the hologram... into a serious tool for saving time, money and lives.”

- **Forbes magazine**

“Think virtual reality without the goggles...These are holograms with depth and true color...”

- **Advertising Age**

“There is certainly enormous scope for this emerging technology... Zebra Imaging’s aim, however, is to bring it within reach of most companies.”

- **European Automotive Design**

“Holographic prints add a key dimension to presenting our data, and allow our clients to quickly visualize and understand their projects... Zebra holographic technology has helped us distinguish our business and win new clients and contracts.”

- **Arc Surveying and Mapping**

www.zebraimaging.com

