

# FireDoor Systems



## Product Line

ROLLING SERVICE FIRE
COUNTER FIRE
INTEGRAL FRAME & SILL FIRE

SERIES

630	631	634	635
	640	641	
660	661	662	



INDUSTRY LEADING  
COMMERCIAL & INDUSTRIAL SOLUTIONS



# Fire-rated doors that set the standard for safety and style

## THE TURNKEY SOURCE FOR COMMERCIAL AND INDUSTRIAL SOLUTIONS AND SERVICE

Selection of Overhead Door products automatically includes the unequalled expertise and experience of Overhead Door Red Ribbon Distributors. Nationwide coverage by our over 400 Red Ribbon Distributors is unique in our industry—providing a single source for design and application consulting, installation, service and ongoing maintenance. Turnkey services to maximize the lasting value of your product choice. Your Overhead Door Distributor is also your only source for a full line of commercial and industrial grille and operator



systems specifically designed for integrated applications. For over four generations, our Red Ribbon Distributors have been committed to providing commercial and industrial grille solutions. Combined with Overhead Door product design and manufacturing superiority, our distributors are a proud part of the Overhead Door family, sharing our name, our Red Ribbon logo and our commitment to industry leading innovation and excellence.

## GENERAL FEATURES & BENEFITS

### Rated, reliable fire protection

- Wide range of sizes and styles meet or exceed industry fire safety testing standards including Underwriters Laboratories (UL & ULC), Factory Mutual (FM), New York City, and the State of California (CSFM) requirements
- Doors are compliant with all NFPA-80 standards

### Built-in safety with unparalleled styling

- Constructed of galvanized or stainless steel in a variety of gauges, slat designs and finishes for unsurpassed strength, durability and style
- Door closes automatically under governor control after separation of fuse link. UL recommends a 165°F (74°C) fuse link for ambient conditions of 100°F (38°C) or less, or a 212°F (100°C) fuse link for ambient conditions over 100°F (38°C)
- Door guide assembly rests on the sill or floor to provide an attractive finished appearance eliminating setup gaps. Guides expand upward during a fire

### A full line of service fire and counter fire doors to fit any project

- Rolling service fire doors can accommodate openings up to 41<sup>1</sup>/<sub>2</sub>" wide (12548 mm) or 25<sup>1</sup>/<sub>4</sub>" (7722 mm) high (max. 683 sq. ft. or 63453 sq.mm) with up to a 4-hour UL rating
- Chain hoist fire doors do not require tension reset after automatic fire release.
- Counter fire doors can accommodate openings up to 14<sup>1</sup>/<sub>2</sub>" (4267 mm) wide and 10' (3048 mm) high with either a 3-hour or 1 1/2-hour UL rating, and are optionally available with a 1 1/2-hour rated plastic laminated countertop
- Integral frame and sill counter fire doors with a 1 1/2-hour UL rating afford a handsome finished look
- Motor operated counter fire doors do not require tension reset after automatic fire release

### More options for customized solutions

- Operation: Options include push-up, chain hoist\*, crank\* and electric motor\* (fire doors: RHX® or RSX®; fire counter doors: CDX™)
- UL-listed FireLite® vision lites in 4-, 3-, and 1 1/2-hour labels

allow visual access without compromising safety\*

- Firestop® fire-resistant core countertops covered with popular brands of decorative laminates allow coordination of project design elements for use with counter fire doors\*
- UL-listed brush-type smoke seals satisfy smoke retardation requirements
- Additional safety options include the Fire Sentinel® time-delay release device, photoelectric or ionization-type smoke detectors (with or without heat detector), as well as solid-state horn, strobe or voice enunciators
- Wind load options\* are available (on fire doors only) for Florida Building Code (FBC), Miami-Dade, Texas Department of Insurance (TDI)

### Fire Sentinel: State-of-the-art, fail-safe fire protection

- Fire Sentinel® time-delay release device provides added protection in the event of a power loss
- Multiple models provide the level of protection best suited to the application
- 10-second time-delay on alarm and independent 10-second time-delay on power loss (up to 60-seconds optional) offer fail-safe protection and eliminate false operation during momentary power outages
- "Intelligent operation" feature on select models recognizes when door is closed and inhibits release to eliminate time-consuming resets and prevent damage to the door release mechanism
- Single closure design eliminates separate wiring from time-delay to optional equipment
- Innovative engineering affords easy, convenient reset and vibration-resistant design prevents false closure
- Advanced options on selected models include 72-hour battery backup, strobe/sounder alarms, programmable multilingual enunciators, and no-delay closure feature
- Additionally available uninterruptible power supply for use with motor-operated doors allows door closure by a central alarm or smoke detector under motor power

Firestop is a registered trademark of Georgia-Pacific Corporation  
FireLite is a registered trademark of Nippon Electric Glass Company  
\*Not available in integral frame and sill

Overhead Door Corporation offers a wide array of rolling steel doors to meet the most demanding fire safety standards, unusual opening sizes and discerning aesthetic requirements. Designed to close automatically in the event of a fire or alarmed event, our fire-rated doors are available for service door and counter applications in commercial, industrial, institutional and retail uses.

All doors comply with NFPA-80, and are listed for both masonry and non-masonry applications — including installation to wood or steel jambs within drywall. The Fire Sentinel® time-delay release mechanism provides an added measure of safety to control the doors' closure.

*Installation and Service: Overhead Door Company of Dallas-Commercial*



# Fire Door Comparison Chart

## Fire Sentinel®



### Fire Sentinel® time-delay release device

The Fire Sentinel® is a UL-listed, fail-safe, time-delay door release device that controls a fire door's closure in an emergency condition. A variety of Fire Sentinel® models and a number of optional features permit customization of any fire-rated door to the level of protection required for your specific application. (See page 15 for more information)

Fire Doors		GENERAL SPECIFICATIONS													
	SERIES	Label UL 1-1/2 hr (FM optional)	UL 3 hr (FM optional)	ULC 3 hr	UL 4 hr	UL Oversized door	FM Oversized door (optional)	Applications Masonry/steel	Non-masonry	Standard Maximum width	Standard Maximum height	Curtain material	Frame material	Sill material	Finish color
Rolling Service Fire Doors (Pg. 4 – 9)	630	*	*	*	*	**	***	•	†	41'2" (12548 mm)	25'4" (7722 mm)	galv./ss			gray/tan/ wht/brn
	631	* (No FM)	* (No FM)	*	N/A	***	N/A	•	•	14' (4267 mm)	12' (3658 mm)	galv.			gray/tan/ wht/brn
	634	N/A	N/A	N/A	*	**	***	•	N/A	41'2" (12548 mm)	25'4" (7722 mm)	galv./ss			gray/tan/ wht/brn
	635	*	*	*	*	**	***	•	•	24'0" (7351 mm)	24'0" (7351 mm)	galv./ss 21 STC; 4.5R			gray/tan/ wht/brn
Counter Doors (Pg. 10 – 12)	640	*	*			**	***	•	•	14' (4267 mm)	10' (3048 mm)	galv.			gray/tan
	641	*	*			**	***	•	•	14' (4267 mm)	10' (3048 mm)	ss			ss #4
Integral Frame Counter Doors (Pg. 13)	660	• (No FM)						•	•	9' (2743 mm)	4' (1,219 mm)	ss	ss	ss	ss #4
	661	• (No FM)						•	•	9' (2743 mm)	4' (1,219 mm)	galv.	galv.	ss	galv./ss #4
	662	• (No FM)						•	•	9' (2743 mm)	4' (1,219 mm)	galv.	ss	ss	galv./ss #4

\* (Up to 13'6" or 4115 mm width/height, max. 152 sq. ft. or 14121 sq.mm)

\*\* (Over 152 sq. ft. or 14121 sq.mm)

\*\*\* (Over 152 sq. ft. or 14121 sq.mm., but less than 18' or 5486 mm height) (FM reviews designs for openings over 18' or 5486 mm wide)

† Non-masonry with wood studs or metal studs limit is 14' wide and 12' tall, non-masonry with steel tubes limit is 16' wide and 12' tall.

Note: ss = Stainless steel, galv = painted, galvanized steel

Information is subject to change. Please call your local Overhead Door distributor for special applications or if your application is not listed.

All 635 Series Doors are chain hoist minimum.



## Fire Door Options



### FireLite®

FireLite® vision lites are available in 4-hour, 3-hour, and 1½ hour labeled rolling fire doors to provide visual access through the door's curtain slats.

*(Not available in integral frame and sill model)*



### Smoke detectors

Smoke detectors available, photoelectric or ionization types, with or without heat detector. Requires the use of a Fire Sentinel® release device.



### Smoke Seals

Brush-type smoke seals available for applications which have requirements for smoke retardation.

## AVAILABLE OPTIONS

Fire Sentinel® time-delay release device	Smoke detectors	FireLite® vision lites	UL-listed brush-type smoke seals	Operation Push-up	Chain hoist	Crank	Electric	Locking Interior slide bolt Cylinder lock	Finish Optional powder coat 197 Premium colors
•	•	•	•	• (Up to 80 sq. ft. or 7432 sq. mm)	•	•	•	• •	•
•	•	•	•	• (Up to 80 sq. ft. or 7432 sq. mm)	•	•	•	• •	•
•	•	•	•	• (Up to 80 sq. ft. or 7432 sq. mm)	•	•	•	• •	•
•	•	•	•		•	•	•	• •	•
•	•	•	•	•		•	•	• •	•
•	•	•	•	•		•	•	• •	
•	•		•	•		•		• •	
•	•		•	•		•		• •	
•	•		•	•		•		• •	

# Rolling Service Fire Doors

**SERIES 630 631 634 635**

## Standard Features At a Glance

- Fire doors are in compliance with:
  - » National Fire Protection Association (NFPA-80)
  - » Underwriters Laboratories (UL & ULC)
  - » New York City (MEA)
  - » State of California (CSFM)
- Up to a four-hour rating on masonry, concrete and steel walls, and a three-hour rating on non-masonry walls to satisfy a variety of applications
- Mechanical resettable hoist (non-motorized) enables easy drop test and reset of fire door in seconds
- Viscous governor controls rate of door descent during a fire while reducing noise and vibration for quieter door operation on hoist doors
- Innovative planetary gear design ensures years of reliable service and drop-out performance on hoist doors
- Durability in design allows for daily operation, eliminating need for additional rolling service door
- Fusible link separates at 165°F (74°C) to automatically close the door in case of fire
- Guide assembly rests on floor for flush guide installation
- Flexibility in mounting and operation type
- FireKing® Insulated Fire Door (635 Series) serves as thermal barrier, ideal for applications which require separation due to climate control requirements
  - » Energy efficiency, R-value of 4.5
  - » Sound Transmission Class (STC) of 21, ideal for applications requiring sound control
  - » Mineral wool slat insert offers Smoke and Flame Index of 5

## Options

- Factory Mutual (FM) label optional
- Operation: push-up, chain hoist, crank and electric motor (RHX® or RSX®)
- Fire Sentinel® time-delay release device
- FireLite® vision lites
- UL-listed brush-type smoke seals
- Flame baffle system (required for FM label)
- Photoelectric or ionization-type smoke detectors
- Horns and horns with strobes
- Cylinder locking bottom bar with mortise cylinder
- Wind load (FBC, TDI, Miami-Dade) available on fire doors only
- PowderGuard™ premium powder coat paint finish in 197 standard colors, or color-matched to specification
- PowderGuard™ Zinc and PowderGuard™ Weathered finishes

The FireKing® (630/631/634/635 Series) rolling steel, fire-rated service doors offer superior protection wherever a listed fire door is required. Common applications include factories, warehouses, mills, distribution centers and parking garages. Customized fire doors are available for conveyor openings. These doors feature fusible links mounted on both sides of the wall that separate to automatically close the door. UL recommends a 165° F (74° C) fuse link for ambient conditions for 100° F (38° C) or less, or a 212° F (100° C) fuse link for ambient conditions over 100° F (38° C). Added protection features, such as Fire Sentinel® and FireLite® vision lites are optional.

## Slat selection and finishes

Overhead Door Corporation offers the widest range of curtain slats and finishes in the industry. Fire door slats are available in curved or flat profile in either galvanized or stainless steel. Galvanized slats are finished with a rust-inhibitive, roll-coating process that incorporates baked-on prime paint, and a baked-on polyester top coat of gray, tan, white or brown. Stainless steel slats are manufactured with a No. 2B mill finish or No. 4 Brushed finish.

## 197 Powder Coat Finishes



The color palette for rolling steel products specifying from powder coat finishes in 197 colors is available from your Overhead Door distributor. Color may also be matched to architect's specifications to best compliment the look of the facility.





# Rolling Service Fire Doors



**SERIES 630 631 634 635**

## Product Application Chart

DOOR LABEL	MOUNTING	WALL CONSTRUCTION	MAXIMUM WIDTH	MAXIMUM HEIGHT	MAXIMUM AREA	CERTIFYING AGENCY
4 hours	Face of wall and between the jambs*	Masonry/Steel	13'-6"	13'-6"	152 sq ft	UL
4 hours	Face of wall and between the jambs*	Masonry/Steel	12'	10'	120 sq ft	FM
Oversize 4 hours	Face of wall and between the jambs*	Masonry/Steel	41'-2"	25'-4"	683 sq ft	UL
Oversize 4 hours	Face of wall and between the jambs*	Masonry/Steel	18'	18'	324 sq ft	FM
3 hours	Face of wall and between the jambs*	Non-masonry	12'	12'	144 sq ft	UL
1 ½ hours	Face of wall and between the jambs*	Non-masonry	12'	10'	117 sq ft	FM
Oversize 3 hours	Face of wall and between the jambs*	Non-masonry	14'	12'	168 sq ft	UL
Oversize 1 ½ hours	Face of wall	Non-masonry	14'	11'	140 sq ft	FM
Oversize 3 hours	Face of wall and between the jambs*	Steel tube inside non-masonry	16'	14'	224 sq ft	UL
Oversize 1 ½ hours	Face of wall	Steel tube inside non-masonry	14'	11'	140 sq ft	FM
3 hours	Face of wall	Steel tube on masonry or non-masonry	12'	12'	144 sq ft	UL
3 hours	Face of wall	Steel tube on masonry or non-masonry	12'	10'	120 sq ft	FM
Oversize 3 hours	Face of wall	Steel tube on masonry or non-masonry	24'	24'	576 sq ft	UL
Oversize 3 hours	Face of wall	Steel tube on masonry or non-masonry	18'	18'	324 sq ft	FM

\* Between jambs doors are based on width of wall and from floor to top of coil (under lintel). Factory Mutual (FM) reviews each size above the over size service on a case-by-case basis

## Available Options

 <p><b>Fire Sentinel®</b></p>	Time-delay release device
<b>FireLite® vision lite</b>	Available in 1-1/2 hr, 3 hr, and 4 hr labels
 <p><b>Smoke detectors Heat detectors</b></p>	Photoelectric or ionization-type smoke detectors. Heat detectors are also available.
<b>Smoke seal</b>	UL-listed brush-type smoke seals ("S" label) to satisfy smoke retardation requirements of certain applications.
<b>Flame baffle system</b>	A Factory Mutual (FM) requirement.
<b>FM Label</b>	FM labels are available in 1-1/2 hr, 3 hr, and oversized door.
<b>Horns</b>	Horns and horns with strobes are available.
<b>Windload</b>	Approved wind load options available for Florida Building Code, Miami-Dade and Texas Department of Insurance
<b>Crank or electric operation</b>	To satisfy a variety of applications. See page 10 for more detailed information.



### Slat Data

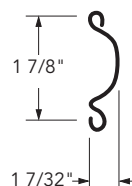
#### 630 Face-of Wall Mounted

Slat	Opening Width	Standard	Optional
C187	Thru 14'0" (4267 mm)	22 ga.*	20 ga., 18 ga. or 22 ga., 20 ga., 18 ga. ss
	Thru 20'0" (6096 mm)	20 ga.	18 ga. or 20 ga., 18 ga. ss
C275	Thru 14'0" (4267 mm)	22 ga.*	20 ga., 18 ga. or 22 ga., 20 ga., 18 ga. ss
	Thru 20'0" (6096 mm)	20 ga.	18 ga. or 20 ga., 18 ga. ss
	Thru 41'2" (12548 mm)	18 ga.	16 ga.
F265	Thru 14'0" (4267 mm)	22 ga.*	20 ga., 18 ga. or 22 ga., 20 ga., 18 ga. ss
	Thru 20'0" (6096 mm)	20 ga.	18 ga. or 20 ga., 18 ga. ss
	Thru 41'2" (12548 mm)	18 ga.	

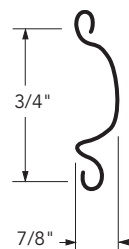
Slats are galvanized and painted or stainless steel (ss).

\* Maximum wall opening height for 22 ga. is 12'0" (3658 mm).

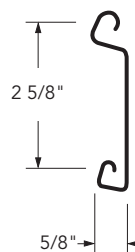
C-187 Slat



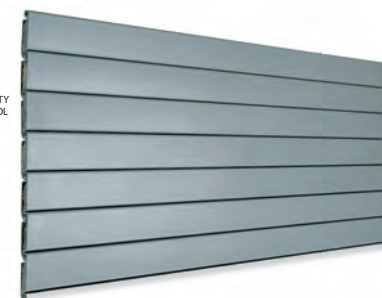
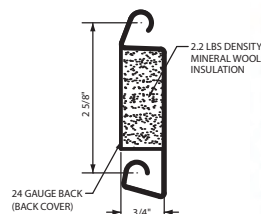
C-275 Slat



F-265 Slat



F-265i Slat



#### 634 Face-of Wall Mounted

Slat	Opening Width	Standard	Optional
C187	Thru 20'0" (6096 mm)	20 ga.	18 ga. or 20 ga., 18 ga. ss
C275	Thru 20'0" (6096 mm)	20 ga.	18 ga. or 20 ga., 18 ga. ss
	Thru 41'2" (12548 mm)	18 ga.	16 ga.
F265	Thru 20'0" (6096 mm)	20 ga.	18 ga. or 20 ga., 18 ga. ss
	Thru 41'2" (12548 mm)	18 ga.	

#### 631 Face-of Wall Mounted

Slat	Opening Width	Standard	Optional
C187	Thru 14'0" (4267 mm)	24 ga.	22 ga.
F265	Thru 14'0" (4267 mm)	24 ga.	22 ga.

Slats are galvanized and painted.

#### 635 Face-of Wall Mounted or Between the Jamb Mount

Slat	Opening Width	Standard	Optional
F265 with back cover	Thru 24'0" wide	24 ga. front	22 ga. front
		24 ga. back	22 ga. back

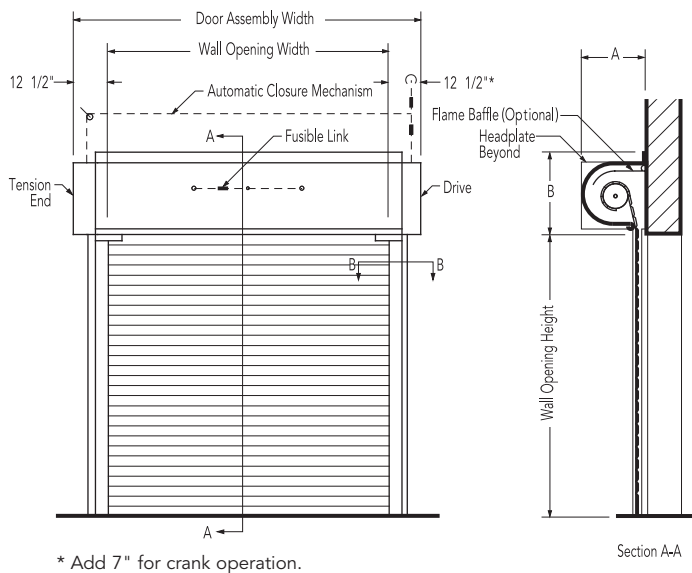
# Rolling Service Fire Doors

**SERIES 630 631 634 635**

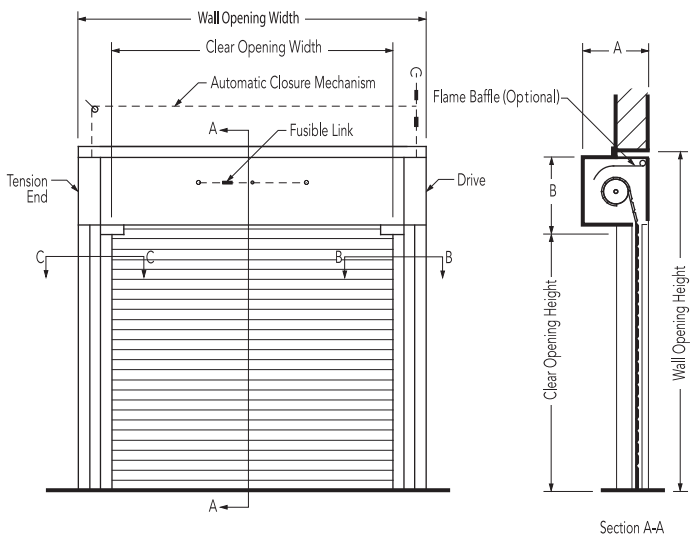
## Door Clearance Elevation

Operation: Push-up, crank, chain hoist, electric, RSX® or RHX®.  
For clearance details on electrically operated doors, see Motor Operator detail page 17.

### Face-of-Wall Mounted



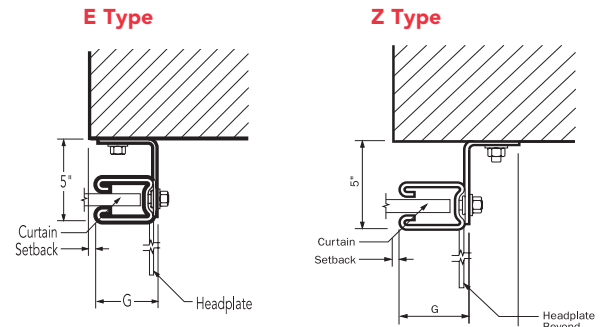
### Between Jambs Mounted



\* Options may effect clearance dimensions.  
For more detailed information, refer to the Overhead Door Corporation's Architectural Design Manual, or consult your local Overhead Door Distributor.

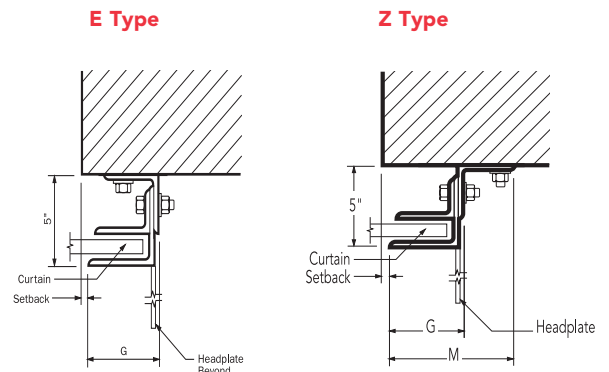
## Face-of-Wall Rolled Guides

### Section B-B



## Face-of-Wall Angle Guides

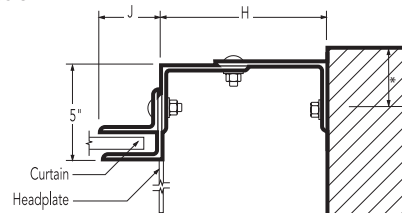
### Section B-B



## Between Jambs-Angle Guides

### Drive Side - Electric, Chain or Crank

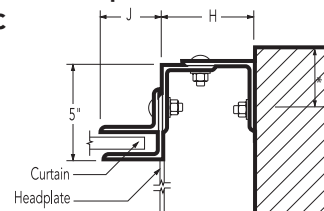
#### Section B-B



Whenever expansion mounting bolts are used maintain a minimum of 6 bolt diameters from edge of wall

### Tension Side & Push-up Drive Side

#### Section C-C



Whenever expansion mounting bolts are used maintain a minimum of 6 bolt diameters from edge of wall



### Headroom Clearance Dimensions

**C187 Slats** – Dimensions A and B

Max. Wall Opening Height*	C187 Slat Thru 14' - 0" Wide			Thru 20' - 0" Wide			Hood Angle Height	Expansion Gap
	A	B**		A	B**			
Thru 8'0" (2438 mm)	17 1/2" (445 mm)	19 5/8" (498 mm)		21 1/2" (546 mm)	23 5/8" (600 mm)		3 1/4" (83 mm)	1 1/4" (32 mm)
Thru 10'0" (3048 mm)	17 1/2" (445 mm)	19 5/8" (498 mm)		21 1/2" (546 mm)	23 5/8" (600 mm)		3 1/4" (83 mm)	1 1/2" (38 mm)
Thru 11'0" (3353 mm)	21 1/2" (597 mm)	23 5/8" (600 mm)		21 1/2" (546 mm)	23 5/8" (600 mm)		3 1/4" (83 mm)	1 3/4" (45 mm)
Thru 12'0" (3658 mm)	21 1/2" (597 mm)	23 5/8" (600 mm)		21 1/2" (546 mm)	23 5/8" (600 mm)		3 1/4" (83 mm)	1 3/4" (45 mm)
Thru 13'0" (3962 mm)	21 1/2" (546 mm)	23 5/8" (600 mm)		21 1/2" (546 mm)	23 5/8" (600 mm)		4" (102 mm)	2" (51 mm)
Thru 14'0" (4267 mm)	21 1/2" (546 mm)	23 5/8" (600 mm)		21 1/2" (546 mm)	23 5/8" (600 mm)		4" (102 mm)	2" (51 mm)
Thru 16'0" (4877 mm)	21 1/2" (597 mm)	23 5/8" (600 mm)		21 1/2" (546 mm)	23 5/8" (600 mm)		4" (102 mm)	2 1/4" (57 mm)
Thru 18'0" (5486 mm)	21 1/2" (546 mm)	23 5/8" (600 mm)		21 1/2" (546 mm)	23 5/8" (600 mm)		4" (102 mm)	2 1/2" (64 mm)
Thru 19'0" (5791 mm)	21 1/2" (597 mm)	23 5/8" (600 mm)		21 1/2" (546 mm)	23 5/8" (600 mm)		4 3/4" (121 mm)	2 3/4" (70 mm)
Thru 21'0" (6401 mm)	21 1/2" (597 mm)	23 5/8" (600 mm)		21 1/2" (546 mm)	23 5/8" (600 mm)		4 3/4" (121 mm)	3" (76 mm)
Thru 24'0" (7315 mm)	23 1/2" (597 mm)	25 5/8" (651 mm)		25 1/2" (546 mm)	27 5/8" (702 mm)		4 3/4" (121 mm)	3 1/4" (83 mm)

**C275 Slats** – Dimensions A and B

Max. Wall Opening Height*	C275 Slat Thru 14' - 0" Wide			Thru 20' - 0" Wide		Thru 24' - 0" Wide		Hood Angle Height	Expansion Gap
	A	B**		A	B**	A	B**		
Thru 8'0" (2438 mm)	19 1/2" (495 mm)	21 5/8" (549 mm)		21 1/2" (546 mm)	23 5/8" (600 mm)	21 1/2" (546 mm)	23 5/8" (600 mm)	3 1/4" (83 mm)	1 1/4" (32 mm)
Thru 10'0" (3048 mm)	19 1/2" (495 mm)	21 5/8" (549 mm)		21 1/2" (546 mm)	23 5/8" (600 mm)	21 1/2" (546 mm)	23 5/8" (600 mm)	3 1/4" (83 mm)	1 1/2" (38 mm)
Thru 11'0" (3353 mm)	19 1/2" (495 mm)	21 5/8" (546 mm)		21 1/2" (546 mm)	23 5/8" (600 mm)	23 1/2" (597 mm)	25 5/8" (651 mm)	3 1/4" (83 mm)	1 3/4" (45 mm)
Thru 12'0" (3658 mm)	21 1/2" (546 mm)	23 5/8" (600 mm)		21 1/2" (546 mm)	23 5/8" (600 mm)	23 1/2" (597 mm)	25 5/8" (651 mm)	3 1/4" (83 mm)	1 3/4" (45 mm)
Thru 13'0" (3962 mm)	21 1/2" (546 mm)	23 5/8" (600 mm)		21 1/2" (546 mm)	23 5/8" (600 mm)	23 1/2" (597 mm)	25 5/8" (651 mm)	4" (102 mm)	2" (51 mm)
Thru 14'0" (4267 mm)	21 1/2" (546 mm)	23 5/8" (600 mm)		21 1/2" (546 mm)	23 5/8" (600 mm)	23 1/2" (597 mm)	25 5/8" (651 mm)	4" (102 mm)	2" (51 mm)
Thru 16'0" (4877 mm)	21 1/2" (546 mm)	23 5/8" (600 mm)		21 1/2" (546 mm)	23 5/8" (600 mm)	25 1/2" (651 mm)	27 5/8" (702 mm)	4" (102 mm)	2 1/4" (57 mm)
Thru 18'0" (5486 mm)	21 1/2" (546 mm)	23 5/8" (600 mm)		21 1/2" (546 mm)	23 5/8" (600 mm)	•	•	4" (102 mm)	2 1/2" (64 mm)
Thru 19'0" (5791 mm)	23 1/2" (597 mm)	25 5/8" (651 mm)		21 1/2" (546 mm)	23 5/8" (600 mm)	•	•	4 3/4" (121 mm)	2 3/4" (70 mm)
Thru 21'0" (6401 mm)	23 1/2" (597 mm)	25 5/8" (651 mm)		21 1/2" (546 mm)	23 5/8" (600 mm)	•	•	4 3/4" (121 mm)	3" (76 mm)
Thru 24'0" (7315 mm)	25 1/2" (648 mm)	27 5/8" (702 mm)		•	•	•	•	4 3/4" (121 mm)	3 1/4" (83 mm)

\*Consult factory

**F265 Slats** – Dimensions A and B

Max. Wall Opening Height*	F265 Slat Thru 14' - 0" Wide			Thru 20' - 0" Wide		Thru 24' - 0" Wide		Hood Angle Height	Expansion Gap
	A	B**		A	B**	A	B**		
Thru 8'0" (2438 mm)	21 1/2" (546 mm)	23 5/8" (600 mm)		21 1/2" (546 mm)	23 5/8" (600 mm)	21 1/2" (546 mm)	23 5/8" (600 mm)	3 1/4" (83 mm)	1 1/4" (32 mm)
Thru 10'0" (3048 mm)	21 1/2" (546 mm)	23 5/8" (600 mm)		21 1/2" (546 mm)	23 5/8" (600 mm)	21 1/2" (546 mm)	23 5/8" (600 mm)	3 1/4" (83 mm)	1 1/2" (38 mm)
Thru 11'0" (3353 mm)	21 1/2" (546 mm)	23 5/8" (600 mm)		21 1/2" (546 mm)	23 5/8" (600 mm)	23 1/2" (597 mm)	25 5/8" (651 mm)	3 1/4" (83 mm)	1 3/4" (45 mm)
Thru 12'0" (3658 mm)	21 1/2" (546 mm)	23 5/8" (600 mm)		21 1/2" (546 mm)	23 5/8" (600 mm)	23 1/2" (597 mm)	25 5/8" (651 mm)	3 1/4" (83 mm)	1 3/4" (45 mm)
Thru 13'0" (3962 mm)	21 1/2" (546 mm)	23 5/8" (600 mm)		21 1/2" (546 mm)	23 5/8" (600 mm)	23 1/2" (597 mm)	25 5/8" (651 mm)	4" (102 mm)	2" (51 mm)
Thru 14'0" (4267 mm)	21 1/2" (546 mm)	23 5/8" (600 mm)		21 1/2" (546 mm)	23 5/8" (600 mm)	23 1/2" (597 mm)	25 5/8" (651 mm)	4" (102 mm)	2" (51 mm)
Thru 16'0" (4877 mm)	23 1/2" (597 mm)	25 5/8" (651 mm)		23 1/2" (597 mm)	25 5/8" (651 mm)	25 1/2" (651 mm)	27 5/8" (702 mm)	4" (102 mm)	2 1/4" (57 mm)
Thru 18'0" (5486 mm)	23 1/2" (597 mm)	25 5/8" (651 mm)		23 1/2" (597 mm)	25 5/8" (651 mm)	•	•	4" (102 mm)	2 1/2" (64 mm)
Thru 19'0" (5791 mm)	23 1/2" (597 mm)	25 5/8" (651 mm)		25 1/2" (648 mm)	27 5/8" (702 mm)	•	•	4 3/4" (121 mm)	2 3/4" (70 mm)
Thru 21'0" (6401 mm)	23 1/2" (597 mm)	25 5/8" (651 mm)		27 1/2" (699 mm)	29 5/8" (752 mm)	•	•	4 3/4" (121 mm)	3" (76 mm)
Thru 24'0" (7315 mm)	•	•		•	•	•	•	4 3/4" (121 mm)	3 1/4" (83 mm)

\*Consult factory

**C187 C275 F265 Slats** – Dimensions G and M\*\*\* Guide Clearance Dimensions

Max. Wall Opening Widths*	G	M	J	H (Tension End)	Dimension H*** Drive End Type of Operation	H
Thru 8'0" (2438 mm)	3 1/4" (83 mm)	5 1/2" (140 mm)	2 3/4" (70 mm)	4" (102 mm)	Push-Up	4"
Thru 12'0" (3658 mm)	3 3/4" (95 mm)	6" (152 mm)	3 1/4" (83 mm)	4" (102 mm)	Chain, Crank	7 1/2"
Thru 14'0" (4267 mm)	4" (102 mm)	5 3/4" (146 mm)	3 1/2" (89 mm)	4" (102 mm)	RSX®	7 1/2"
Thru 16'0" (4877 mm)	4 1/4" (108 mm)	6" (152 mm)	3 1/2" (89 mm)	4 1/2" (114 mm)	RHX®	8 1/2"
Thru 20'0" (6096 mm)	4 3/4" (121 mm)	7" (178 mm)	4 1/4" (108 mm)	4 1/2" (114 mm)		
Thru 24'0" (7315 mm)	5 3/4" (146 mm)	8" (203 mm)	5 1/4" (133 mm)	5 1/4" (133 mm)		

\*Height limit for non-masonry jambs is 12'0" (3658 mm). \*\*Add 2" (51 mm) for electric operation. \*\*\*For max. wall opening height of 12' (3658 mm).

# Counter Fire Doors

## SERIES 640 641

### Standard Features At a Glance

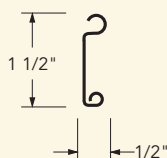
- Available with UL and FM 3-hour (optional) Class A labels for masonry fire walls
- Available with a UL 1 1/2-hour Class B label for applications in non-masonry fire walls of dry wall with wood, steel studs, or steel tube jambs
- NFPA-80 compliant
- Fusible link separates at 165°F (74°C) to automatically close the door
- Governor controls rate of door descent during a fire
- Compact box guide design for an attractive appearance
- Upward-expanding guide design for flush to countertop installation
- Flat slat curtain design in primed galvanized steel finish (640 Series) or No. 4 stainless steel finish (641 Series)
- Slide bolt locking on push-up/crank

### Options

- Flame baffle system (required for optional FM label)
- Fire Sentinel® time-delay release device (see page 15)
- FireLite® vision lites in 3- and 1 1/2-hour curtains
- Firestop® fire-resistant core countertops surfaced with the most popular brands of decorative laminates
- UL-listed brush-type smoke seals
- Photoelectric or ionization-type smoke detectors
- Crank or electric operation
- Electric operation does not require tension reset after drop test or closure due to power loss
- Powder-coat paint finish offered in 197 custom colors, or color-matched to architect's specification
- 20 minute UL smoke label on 640/641 doors up to 12'0" wide x 10'0" high opening

### Slat Data

#### F-158 Slat



Series	Slat	Opening	Width	Standard
640	F-158	Thru 14'0"	(4267 mm)	22 ga.
641	F-158	Thru 14'0"	(4267 mm)	22 ga. ss

Slats are galvanized and painted or stainless steel (ss).

The 640 and 641 Series doors are ideal for openings requiring a counter-type fire-rated door. Common applications include factories, schools, concessions, hospitals, cafeterias and retail settings. Labeled with either a 3-hour Class A rating for masonry applications, or a 1 1/2-hour Class B label in non-masonry fire walls, these doors are designed to expand upward in a fire, allowing the guides to be installed flush with the sill. Their compact, box-like form also provides an attractive finished appearance that requires minimum sideroom. The 640 Series has exposed components made of primed galvanized steel while the 641 Series exposed components are of stainless steel.

These doors are also available with a 1 1/2-hour fire-rated countertop with fire-resistant core and a variety of popular decorative laminate finishes. Added protection features, such as Fire Sentinel® and FireLite® vision lites are optional.

Series 640 and 641 counter fire doors are UL approved and can be custom designed for conveyor openings.

*Installation and Service: Overhead Door Company of Huntsville*



Firelight is a registered trademark of Nippon Electric Glass Company.  
FireStop is a registered trademark of Georgia-Pacific Corporation.



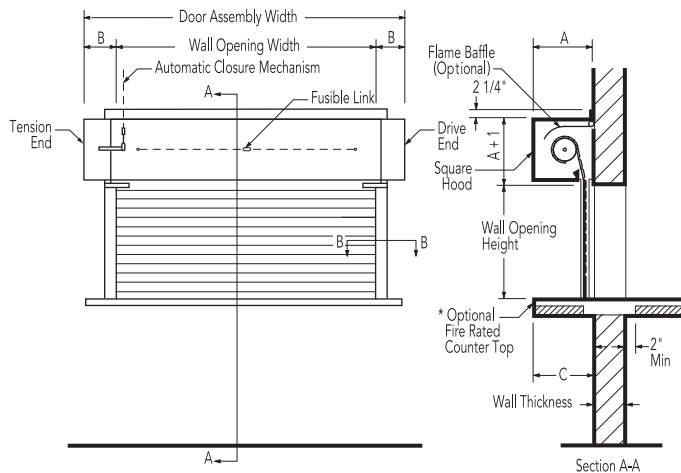
### Door Clearance Elevation

### Guides

Operation: Push-up, crank or electric.

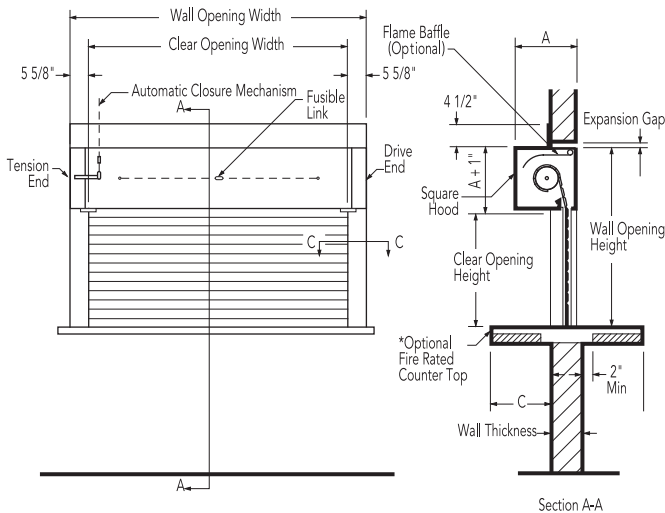
For clearance details on electrically operated doors, see Motor Operator detail pages at back of this section.

#### Face-of-Wall Mounted

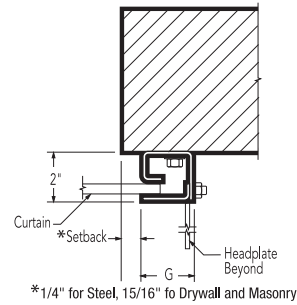


\* Optional 1 1/2 hour fire rated countertop available up to 48" (1.2 m) deep and 15' (4.5 m) long.

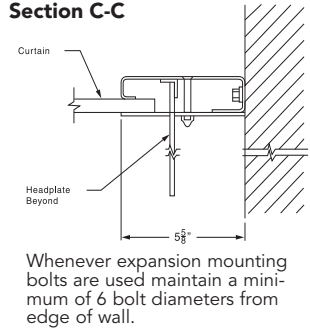
#### Between Jamb's Mounted



#### Face-of-Wall Mounted Section B-B



#### Between Jamb's Mounted Section C-C



#### Dimension A Wall Opening Heights up to 10'0" (3048 mm) F128 slat

##### Maximum Wall Opening Height

Thru 5'0" (1524 mm)	10" (254 mm)
Thru 10'0" (3048 mm)	12" (305 mm)

Slat's are galvanized and painted.

#### Dimension B Wall Opening Widths up to 14'0" (4267 mm) F128 slat

##### Maximum Wall Opening Height

Thru 8'0" (2438 mm)	4 15/16" (125 mm) + setback
Thru 14'0" (4267 mm)	5 5/8" (143 mm) + setback

#### Dimension C Rated Counter Top Coil Side Dimension

Maximum Wall Opening Width	Minimum C
Up to 5'0" (1524 mm)	3 1/2" (89 mm)
5'1" to 6'0" (to 1829 mm)	4" (101 mm)
6'1" to 8'0" (to 2438 mm)	4 1/2" (114 mm)
8'1" to 10'0" (to 3048 mm)	5 1/2" (139 mm)

#### Dimension G Wall Opening Widths up to 14'0" (4267 mm) F128 Slat

##### Maximum Wall Opening Height

Thru 8'0" (2438 mm)	1 15/16" (49 mm)
Thru 14'0" (4267 mm)	2 5/8" (67 mm)

#### Wall Opening Widths up to 12'11" (3937 mm) F128 Slat

Maximum Wall Opening Height	Expansion Gap
Thru 4'0" (1219 mm)	3/4" (19 mm)
Thru 6'0" (to 1829 mm)	1 1/8" (28 mm)
Thru 8'0" (to 2438 mm)	1 1/2" (38 mm)
Thru 10'0" (to 3048 mm)	1 7/8" (47 mm)
Thru 11'2" (to 3353 mm)	2" (51 mm)

**PRODUCT APPLICATION CHART**

Door Label	Mounting	Wall Construction	Max. Width	Max. Height	Max. Area	Agency	Series
3 Hr/1 1/2 Hr 3/4 Hr/ 1 1/2 Hr	Face of wall	Masonry/Steel	12' (3658 mm)	10' (3048 mm)	120 Sq Ft (11148 mm)	UL CSFM	640/641
Oversize 3 Hr 1 1/2 Hr	Face of wall	Masonry/Steel	14' (4267 mm)	10' (3048 mm)	140 Sq Ft (13006 sq. mm)	UL CSFM	640/641
1 1/2 Hr	Face of wall	UL 411 Wall	12' (3658 mm)	10' (3048 mm)	120 Sq Ft (11148 mm)	UL CSFM	640/641
Oversize 1 1/2 Hr	Face of wall	UL 411 Wall	14' (4267 mm)	10' (3048 mm)	140 Sq Ft (13006 sq. mm)	UL CSFM	640/641
Oversize 3 Hr 1 1/2 Hr	B/T jambs*	Masonry/Steel	12' – 11 1/4" (3943 mm)	11' – 2 9/16" (3418 mm)	145 Sq Ft (13471 sq. mm)	UL CSFM	640/641
1 1/2 Hr	B/T jambs*	UL 411 Wall	10' 10" (3302 mm)	10' 10" (3302 mm)	117 Sq Ft (10870 sq. mm)	UL CSFM	640/641
3 Hr/1 1/2 Hr 3/4 Hr/1 1/2 Hr	Face of wall	Masonry/Steel	12' (3658 mm)	10' (3048 mm)	120 Sq Ft (11148 mm)	FM**	640/641
Oversize 3 Hr 1 1/2 Hr	Face of wall	Masonry/Steel	14' (4267 mm)	10' (3048 mm)	140 Sq Ft (13006 sq. mm)	FM**	640/641
1 1/2 Hr	Face of wall	UL 411 Wall	12' (3658 mm)	10' (3048 mm)	120 Sq Ft (11148 sq. mm)	FM**	640/641
Oversize 1 1/2 Hr	Face of wall	UL 411 Wall	14' (4267 mm)	10' (3048 mm)	140 Sq Ft (13006 sq. mm)	FM**	640/641
Oversize 3 Hr 1 1/2 Hr	B/T jambs*	Masonry Wall	12' – 11 1/4" (3943 mm)	11' – 2 9/16" (3418 mm)	145 Sq Ft (13006 sq. mm)	FM**	640/641
1 1/2 Hr	B/T jambs*	UL 411 Wall	10' 10" (3302 mm)	10' 10" (3302 mm)	117 Sq Ft (10870 sq. mm)	FM**	640/641
1 1/2 Hr Oversize 1 1/2 Hr	Fire rated plastic Laminated Countertop	Same as 640/641	15' (4572 mm)	4' (deep) (1219 mm)	60 Sq Ft (5574 sq. mm)	WH	640/641
1/3 Hr "S" Smoke Label Oversize 1/3 Hr "S" Smoke Label	Masonry, steel Masonry, steel	UL 411 UL 411	8' 12'	9' 10'	72 Sq Ft 120 Sq Ft	UL UL	640/641

\* – Between jamb doors are based on the width of the wall and from floor to top of coil (under lintel)

\*\* – FM label is optional (flame baffle is required for FM label)

UL– Underwriters Laboratories, Inc.

CSFM – California State Fire Marshall

WH – Wamock Hersey International

Information is subject to change. Please call your local Overhead Door distributor for special applications or if your application is not listed.



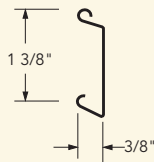
Standard Features At a Glance

Label	UL 1 1/2-hour label
Maximum size	9' x 4' (2743 mm x 1219 mm)
Curtain	Interlocking 22-gauge stainless steel slats (660 Series) Interlocking 22-gauge galvanized steel slats (661/662 Series)
Integral frames/guides	No. 4 finish stainless steel (660/662 Series) 16-gauge primed steel (661 Series)
Sill	14-gauge steel or stainless steel completely enclosed with fireproof acoustic filler
Hood	No. 4 finish stainless steel (660/662 Series) Primed steel (661 Series)
Operation	Push-up
Mounting	Between jambs
Locking mechanism	Interior slide bolts

Options

- Fire Sentinel® time-delay release device (see page 15)
- UL Listed brush-type smoke seal
- Photoelectric or ionization-type smoke detectors
- Locking mechanisms: Cylinder locking bottom bar with mortise cylinders

Integral Frame and Sill Slat Data



Series	Opening	Width	Slat	Frame
660	Thru 9'0"	(2743 mm)	22 ga. ss	stainless steel
661	Thru 9'0"	(2743 mm)	22 ga. ss	galvanized steel
662	Thru 9'0"	(2743 mm)	22 ga.	stainless steel

Slats are galvanized and painted or stainless steel (ss).

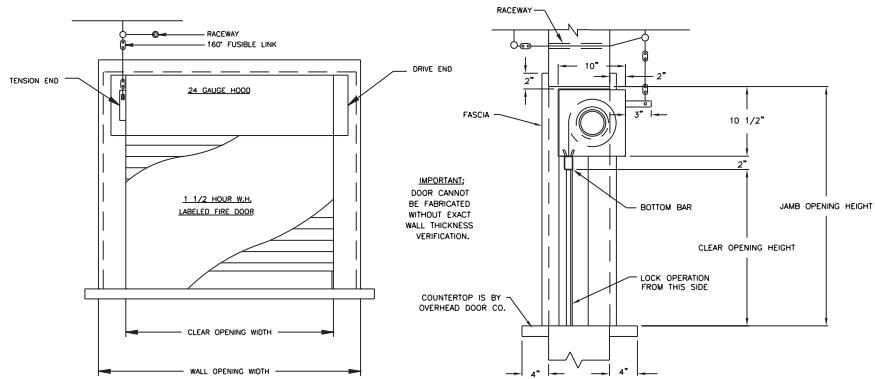
The 660/661/662 Series integral frame counter fire doors provide a handsome finished appearance for a variety of applications, including food service counters. Available for opening sizes up to 9' x 4' (2743 mm x 1219 mm), these doors carry a UL 11/2-hour Class B label and are factory assembled as a complete unit with fully welded frames. The frame comprises 16-gauge jambs and header, and is complemented by a 14-gauge sill, plus hood and fascia. Added protection features, such as Fire Sentinel® are available as options.

Door Selection Chart			
	Frame	Curtain	Sill
Series 660	Stainless steel	Stainless steel	Stainless steel
661	Galvanized steel	Galvanized steel	Stainless steel
662	Stainless steel	Galvanized steel	Stainless steel

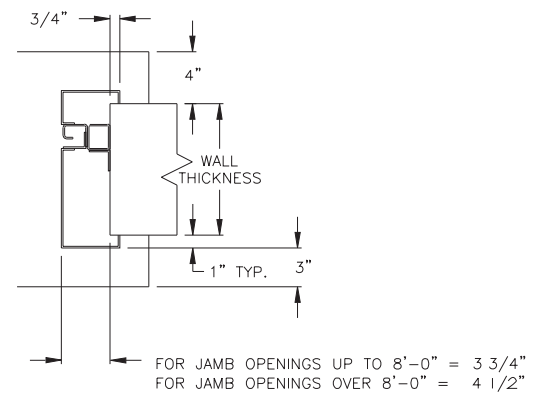
SERIES 660 661 662

Door Clearance Elevations

Operation: push-up.



Wood Stud, Steel Stud or Masonry Jamb



## MODEL: FSXP

- Voltage input 24 VDC only
- Voltage output 24 VDC
- Must be powered by a building alarm system that has a back up power source.
- Release time delay: Factory set at 10 seconds can be field adjusted by dipswitch settings to 20, 30 and 60 seconds
- Load Rating: Support and Release 40 lbs. Maximum
- Box dimension: 9.7" x 7.5" x 5" (h x w x d)
- Approximate weight is 8 lbs.

## MODEL: FSXPBB

- Voltage is universal: 24 VDC, 24 VAC & 120 VAC
- Voltage output 24 VDC
- Release time delay: Factory set at 10 seconds can be field adjusted by dipswitch settings to 20, 30 and 60 seconds.
- Power Loss Time delay: 72 hours.
- Unit can power an optional ADA horn / strobe 24 VDC.
- Load Rating: Support and Release 40 lbs. Maximum
- Box dimension: 9.7" x 7.5" x 5" (h x w x d)
- Approximate weight is 18 lbs.

## MODEL: FSXPBBVB

- Same features as FSXPBB with the addition of a Voice Board.
- Power Loss Time delay: 24 hours with addition of a Voice Board.
- Voice Board is a factory installed option not field installed.

## MODEL: FSAFCB (Used with Electric Operator)

- Voltage input 120 VAC only
- Voltage output is 24 VDC
- Release time delay: Factory set at 10 seconds can be field adjusted by dipswitch settings to 20, 30 and 60 seconds.
- The unit can support 2 or 4 wire smoke detector system (maximum of 4 Class B Style A detectors. Release devices are normally open contacts.
- Unit has two 12 VDC batteries wired in series for 24 VDC output.
- Unit requires the use of an electric safety edge on the bottom bar.
- Unit is wired into electric operator to drive door close on alarm.
- Unit is supplied with a combination ADA horn / strobe combination and a test keyswitch.
- Load Rating: Support and Release 40 lbs. Maximum
- Power Loss Time delay: 48 hours
- Box dimension: 10" x 10" x 5" (h x w x d)
- Approximate weight is 18 lbs.

## MODEL: FSAFCBVB

- Same features as FSAFCB with the addition of a Voice Board.
- Power Loss Time delay: 36 hours with addition of a Voice Board.
- Voice Board is a factory installed option not field installed.

Fire Sentinel® Model Features and Benefits

Design Features	FS Models					Benefits
	XP	XPBB	XPBBVB	AFCB	AFCBVB	
Fail - Safe Designs	S	S	S	S	S	Meets UL, CUL, and CSFM requirements
Adjustable Power Loss Time Delay	S	S	S	S	S	Allows time for back-up power to come on-line
Adjustable Alarm Time Delay	S	S	S	S	S	10-60 seconds as allowed by (AHJ) Authority Having Jurisdiction
"Intelligent Operation"		S	S	S	S	Avoids unnecessary resetting
Aux. 24v DC Output	S	S	S	S	S	Can be used to activate additional power devices (Horn, Strobe lights, etc.)
24 Hour Internal Battery with Charger			S			Backs up power to avoid automatic closure during power failures
36 Hour Internal Battery with Charger					S	Backs up power to avoid automatic closure during power failures
48 Hour Internal Battery with Charger						Backs up power to avoid automatic closure during power failures
72 Hour Internal Battery with Charger		S				Backs up power to avoid automatic closure during power failures
Audible/Visual Enunciator Compatible				S	S	ADA Sounder/Strobe warning before door closure
Voice Module Compatible		O	O		S	Spoken warning before door closure
Fail to Close Safety Timer				S	S	Additional assurance of full closure
Door Obstruction Counter				S	S	Assurance of Full Closure even with obstruction
Stop on Obstruction				S	S	Allows additional opportunity to exit, resets from obstruction automatically

S - Standard O - Optional



## Operator Control Options

- Fire Sentinel® fail-safe, time-delay release device
- Entrapment protection: electric sensing edge, pneumatic sensing edge, or photoelectric sensors
- Ground-level chain hoists for emergency or hand operation (standard on Model RHX®; optional on Model RSX®; not available on Model CDX™)
- Push-button, key or combination stations; surface- or flush-mounted for interior and/or exterior locations

## Recommended Safety Features

### Fire Sentinel®

Fire Sentinel® is highly recommended for all fire doors. This fail-safe time-delay door release device provides a 10-second time delay at the initiation of a detector/alarm input, and an independent 10-second (30-second optional) delay on power loss. When used in conjunction with an electric operator, it also facilitates easy test and reset capabilities for fire doors. For more information on Fire Sentinel®, refer to pages 15.

Electric Operator Selection Guide

	Horsepower	Counter Door*	Rolling Door*	Helical Gear	6-rib poly J-belt	Worm gear	Adjustable clutch	Totally enclosed	Continuous duty	Mounting type
<b>Model CDX™</b>	1/2 HP	140 (13006)	N/A	•				•		F
<b>Model RSX®</b>	1/2, 3/4, 1 HP	N/A	168 (15607)		•		•	•	•	F,W,T
<b>Model RHX®</b>	1/2, 3/4, 1 HP	N/A	480 (44591)			•	•	•	•	F,W,T

Mounting Options: F = Front of Hood, W = Wall, T = Top of Hood

\* Maximum area in square feet (square millimeters).

### Entrapment Protection

The installation of an external reversing device for all electrically operated commercial doors is recommended. If a sensing edge or other reversing device is not installed, a constant-contact control switch must be used to close the door. We recommend a two-wire, fail-safe electric sensing edge or two-wire DC edge that will not allow the door to close if the sensing edge is damaged or not working properly where applicable.

The Overhead Door® automatic door operator product line is manufactured to meet the performance requirements of our commercial and industrial doors, offering precise control of your door system for years of trouble-free operation. To improve safety and enhance the life of your door and motor, the industry's guidelines for quality assurance recommend a single manufacturer for both door and operator. Overhead Door® commercial operators are UL 325 2010 compliant.

### Entrapment Protection

Overhead Door Corporation strongly recommends the use of a primary safety device as defined by UL 325 2010. A primary safety device can be approved monitored photo-eyes or an approved monitored sensing edge. If a primary safety device is not installed, a constant contact control switch must be used to close the door. Contact Overhead Door for more information.

## Operator Models

### Model CDX™

Model CDX™ is a gear-reduced commercial operator with a 1/2 HP motor. The CDX™ operator may be used with all 640/641 Series doors. Mounting is front-of-hood only.



### Model RSX®

Model RSX® is a standard duty commercial operator designed to operate doors up to 24' (7315 mm) in height and 1450 pounds (657 kg) in weight. It offers unique features like LimitLock™, SuperBelt™, dual frequency radio system and 16 digit menu setup.



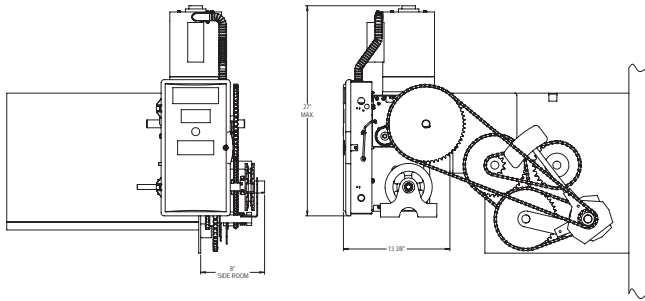
### Model RHX®

Model RHX® is a heavy duty motor featuring industrial worm gear in oil bath design. The RHX® can operate doors up to 24' (7315 mm) in height and 1650 pounds (748 kg) in weight. It offers unique features like LimitLock™, dual frequency radio system and 16 digit menu setup.

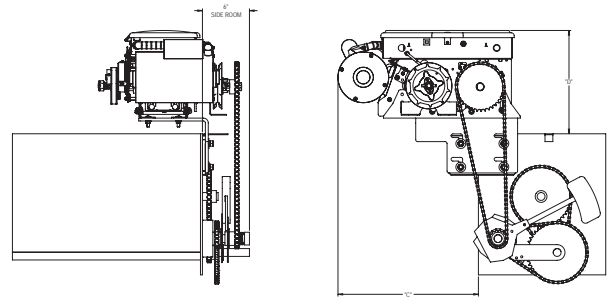


## Mounting Details

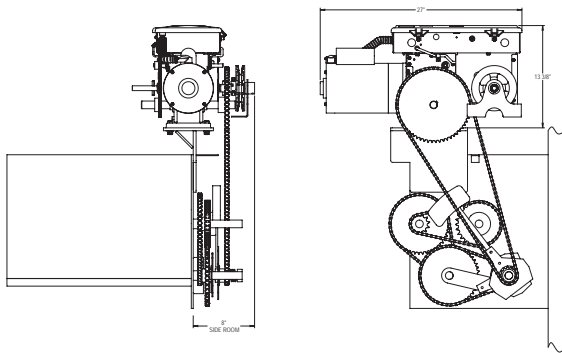
**Front-of-Hood Mounted-RHX®**



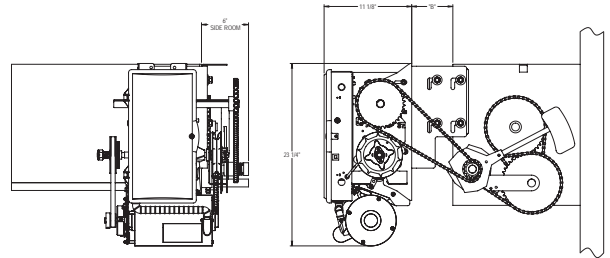
**Top-of-Hood-RSX®**



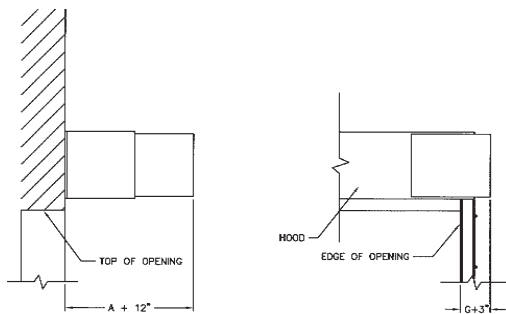
**Top-of-Hood Mounted -RHX®**



**Front-of-Hood Mounted\*-RSX®**



**Front-of-Hood Mounted\*-CDX™**



Note: For "A" and "G" dimensions, refer to Headroom and Guide Clearance Dimension charts applicable to door type selected.

\* Front-of-Hood mounted also available on between jambs mounted doors.

For more detailed information, refer to the Overhead Door Corporation's Architectural Design Manual, or consult your local Overhead Door distributor.

---

## The Original, Innovative Choice for Unequalled Quality and Service

---

Overhead Door Corporation pioneered the upward-acting door industry, inventing the first upward-acting door in 1921 and the first electric door operator in 1926. Today, we continue to be the industry leader through the strength of our product innovation, superior craftsmanship and outstanding customer support, underscoring a legacy of quality, expertise and integrity. That's why design and construction professionals specify Overhead Door Corporation products more often than any other brand.

The Overhead Door Red Ribbon is a mark of quality that also reflects the pride we take in the people who support our products. Our family of over 400 Overhead Door Distributors across the country not only share our name and logo, but also our commitment to excellence. Your Overhead Door Distributor will work with you in a consultative role to ensure that product selections achieve your design and application requirements — in addition to offering expert installation, professional field service and ongoing maintenance. From project design and manufacturing to installation and service, the Overhead Door Red Ribbon is your guarantee of genuine quality and turnkey service excellence.

**Together with our distributors, we offer comprehensive technical information and resource materials to support your project, including:**

- Architectural Design Manual – a comprehensive guide to selecting, specifying and detailing all commercial and industrial Overhead Door products can be found at [www.OverheadDoor.com/ADM/base.html](http://www.OverheadDoor.com/ADM/base.html)
- Operation & Maintenance Manual – detailed product information, customized for your project, to ensure reliable, long-life door system operation
- Custom application and technical assistance through ordering plants' customer service and technical services respectively
- Visit our Architect's Corner at [www.OverheadDoor.com](http://www.OverheadDoor.com)



Advanced Rolling Steel Door  
RapidSlat®



Thermacore® Sectional Doors



Rolling & Side Folding  
Security Grilles & Closures



Rolling Service Doors



Commercial Operators

Today, Overhead Door Corporation – along with our Horton Automatics division, for automated pedestrian entrances – is recognized as the leading, single-source manufacturer of integrated door and operator systems for commercial, industrial and residential applications. With multiple manufacturing locations throughout the United States, a state-of-the-art TREQ (Testing, Reliability, Engineering, and Quality) Center for design and engineering, and a national network of authorized Overhead Door Distributors, our capabilities are leading-edge and our field service and technical support second to none. Built best and backed best, Overhead Door is the industry's leading choice for quality that shows and lasts.

**To talk with the Overhead Door Distributor nearest you, call 1-800-929-DOOR.**

### Overhead Door Corporation

2501 S. State Hwy. 121 Bus., Suite 200

Lewisville, Texas 75067

1-800-929-DOOR

[www.OverheadDoor.com](http://www.OverheadDoor.com)



INDUSTRY LEADING  
COMMERCIAL & INDUSTRIAL SOLUTIONS

The Overhead Door Corporation family of quality commercial and industrial products includes:



A part of Sanwa Holdings Corporation