

Aluminum Door Systems



Product Line

S E R I E S

511 521



INDUSTRY LEADING
COMMERCIAL & INDUSTRIAL SOLUTIONS

An Attractive Solution for Maximum Visual Access and Light Infiltration

THE TURNKEY SOURCE FOR COMMERCIAL AND INDUSTRIAL SOLUTIONS AND SERVICE

Selection of Overhead Door products automatically includes the unequalled expertise and experience of Overhead Door Red Ribbon Distributors. Nationwide coverage by our over 400 Red Ribbon Distributors is unique in our industry—providing a single source for design and application consulting, installation, service and ongoing maintenance. Turnkey services to maximize the lasting value of your product choice. Your Overhead Door distributor is also your only source for a full line of commercial and industrial door and operator systems



specifically designed for integrated applications. For over four generations, our Red Ribbon Distributors have been committed to providing commercial and industrial door solutions. Combined with Overhead Door product design and manufacturing superiority, our distributors are a proud part of the Overhead Door family, sharing our name, our Ribbon logo and our commitment to industry leading innovation and excellence.


GENERAL FEATURES AND BENEFITS

Durable Construction for Years of Reliable Operation

- 1 3/4" (45 mm) thick, corrosion-resistant 6063-T6 aluminum sections with galvanized fixtures and hinges promotes durability and trouble-free operation
- 1/4" (6 mm) diameter through-rods on all stiles and rails enhances strength and sturdiness
- Top-quality materials, excellent field service and optional maintenance program contribute to extended door life, low maintenance costs and maximum productivity

A Variety of Standard Features and Options

- Doors up to 26'11" (8204 mm) wide and 20'1" (6121 mm) high
- Glazing choices include DSB glass, plexiglass, tempered glass, clear Lexan®, multi-wall polycarbonate and wire glass
- Standard clear anodized finish for low-maintenance and corrosion-resistance
- Optional finishes include bronze anodization or a variety of standard powder coat paint colors
- Manual pull rope operation with optional chain hoist or electric motor operator

Aluminum		GENERAL SPECIFICATIONS																
	SERIES	Panel thickness	Max. width	Max. height	Rails Standard material	Rails Standard finish	Center stile widths	End stile widths	Top rail widths	Intermediate rail pair widths	Bottom rail widths							
Sectional	511	1 3/4" (45 mm)	16'2" (4928 mm)	16'1" (4902 mm)	6063-T6 aluminum	204R-1 clear anodized	21/32" (17 mm)	2 3/4" (70 mm)	2 3/8", 3 3/4" (60 mm, 95 mm)	1 3/8" (40 mm)	2 3/8", 3 3/4", 4 1/2" (60 mm/95 mm/114 mm)							
Sectional	521	1 3/4" (45 mm)	26'11" (8204 mm)	20'1" (6121 mm)	6063-T6 aluminum	204R-1 clear anodized	2 11/16" (68 mm)	3 5/16" (85 mm)	2 3/8", 3 3/4" (60 mm, 95 mm)	3 11/16" (94 mm)	3 3/4", 4 1/2" (95 mm/114 mm)							
SERIES		AVAILABLE OPTIONS																
		1/8" (3 mm) DSB	1/8" (3 mm) or 1/4" (6 mm) plexiglass	1/8" (3 mm) or 1/4" (6 mm) tempered	1/8" (3 mm) or 1/4" (6mm) clear Lexan®	1/4" (6 mm) wire glass	1/2"(12mm) insulated glass	Electric operator	Bottom sensing edge	Chain hoist	3" track	Bracket mounting	High-cycle springs	Posi-Tension drums	Pass door	Exhaust ports	Bronze anodization	Powder coat paint finish
Sectional	511	●	●	●	●	●	●	●	●	●	●	●	●	●	●	●	●	●
Sectional	521	●	●	●	●	●	●	●	●	●	●	●	●	●	●	●	●	●

Information is subject to change. Please call your local Overhead Door distributor for special applications or if your application is not listed.



Overhead Door Corporation's aluminum sectional doors offer an attractive solution for commercial and industrial applications where visual access, light infiltration and aesthetics are key design considerations. Offered with a variety of stile widths, glazing materials, track styles, and finish options — and in sizes up to 26'11" (8204 mm) wide and 20'1" (6121 mm) high — these doors feature 1 3/4"(45 mm) sections and 1/4" (6 mm) diameter through-rods for strength and stability. A clear-anodized 204R-1 standard finish affords corrosion resistance, and bronze anodization and a spectrum of powder coat paint finishes are additionally available. Ideal for service stations, fire stations, professional facilities and retail environments, our sectional aluminum doors are practical, durable and handsomely styled — and engineered for long life, low maintenance and enduring beauty.

Installation and Service provided by Overhead Door Company of Southwestern Idaho

Series 521 Clear Anodized



Sectional Aluminum Doors

SERIES 511

Standard Features At a Glance

Panel thickness	1 3/4" (45 mm)
Maximum standard width	16'2" (6147 mm)
Maximum standard height	16'1" (4902 mm)
Material	6063-T6 aluminum
Standard finish	204R-1 clear anodized
Center stile width	21/32" (17 mm)
End stile width	2 3/4" (70 mm)
Top rail width	2 3/8" (60 mm) or 3 3/4" (95 mm)
Top intermediate rail width	3/4" (19 mm)
Bottom intermediate rail width	5/8" (16 mm)
Bottom rail width	2 3/8" (60 mm) or 3 3/4" (95 mm) or 4 1/2" (114 mm)
Weatherseals	Bottom, flexible PVC
Standard springs	10,000 cycle
Track	2" (51 mm)
Mounting	Angle
Operation	Manual pull rope
Hinges and fixtures	Galvanized steel
Lock	Galvanized, interior-mounted single unit

197 Standard Powder Coat Finishes



The Color Palette for Sectional Aluminum Door Products

197 powder coat finishes are available from your Overhead Door distributor.

Options

- Glazing options*: 1/8" (3 mm) DSB; 1/8" (3 mm) or 1/4" (6 mm) plexiglass; 1/8" (3 mm) or 1/4" (6 mm) tempered; 1/8" (3 mm) or 1/4" (6 mm) clear Lexan®; 3/8" (10 mm) and 1/4" (6 mm) multi-wall polycarbonate; 1/4" (6 mm) wire glass; 1/2" (12 mm) insulated glass
- Electric operator or chain hoist
- Bottom sensing edge
- 3" track
- Bracket mounting (not available on full vertical door tracks)
- Higher-cycle springs in 25k, 50k, 75k, 100k cycles
- Exhaust ports

The 511 Series doors are designed in sizes up to 16'2" wide and 16'1" high (4928 mm and 4902 mm). Featuring a narrow center stile width of 21/32" (17 mm), these doors are sleek, attractive and permit maximum visibility. An array of glazing choices, top-and bottom-rail widths, finishes and special options customizes the 511 Series to satisfy nearly any project requirement.

Panel Schedule		Section Schedule	
Door Width	Number of Panels	Door Height	Number of Sections
to 8'11" (2718 mm)	2	to 8'6" (2591 mm)	4
9'0" to 11'11" (2743 mm to 3632 mm)	3	8'7" to 10'1" (2616 mm to 3073 mm)	5
12'0" to 14'11" (3658 mm to 4547 mm)	4	10'2" to 12'1" (3099 mm to 3683 mm)	6
15'0" to 16'2" (4572 mm to 4928 mm)	5	12'2" to 14'1" (3708 mm to 4293 mm)	7
		14'2" to 16'1" (4318 mm to 4902 mm)	8

*Contact your local Overhead Door Corporation Red Ribbon Distributor for special glazing requirements. Verify 1/4" (6 mm) glass applications with factory



Installation and Service provided by Overhead Door Company of Hartford

Series 511 Clear Anodized



Sectional Aluminum Doors

SERIES 521

Standard Features At a Glance

Section thickness	1 3/4" (45 mm)
Maximum standard width	26'11" (8204 mm)
Maximum standard height	20'1" (6121 mm)
Material	6063-T6 aluminum
Standard finish	204R-1 clear anodized (painted white at no charge)
Center stile width	2 11/16" (68 mm)
End stile width	3 5/16" (85 mm)
Top rail width	2 3/8" (60 mm) or 3 3/4" (95 mm)
Top intermediate rail width	2 1/8" (54 mm)
Bottom intermediate rail width	1 19/32" (40 mm)
Bottom rail width	3 3/4" (95 mm) or 4 1/2" (114 mm)
Weatherseals	Bottom, flexible PVC
Standard springs	10,000 cycle
Track	2" (51 mm)
Mounting	Angle
Operation	Manual pull rope
Hinges and fixtures	Galvanized steel
Lock	Galvanized, interior-mounted single unit

197 Standard Powder Coat Finishes



The Color Palette for Sectional Aluminum Door Products

197 powder coat finishes are available from your Overhead Door distributor.

Options

- Glazing options*: 1/8" (3 mm) DSB; 1/8" (3 mm) or 1/4" (6 mm) plexiglass; 1/8" (3 mm) or 1/4" (6 mm) tempered; 1/8" (3 mm) or 1/4" (6 mm) clear Lexan®; 3/8" (10 mm) and 1/4" (6 mm) multi-wall polycarbonate; 1/4" (6 mm) wire glass; 1/2" (12mm) insulated glass
- Electric operator or chain hoist
- Bottom sensing edge
- 3" track
- Bracket mounting (not available on full vertical door tracks)
- Higher-cycle springs in 25k, 50k, 75k, 100k cycles
- Exhaust ports
- Four-section pass door

*Contact your local Overhead Door Corporation Red Ribbon Distributor for special glazing requirements. Verify 1/4" (6 mm) glass applications with factory

The 521 Series is a sectional aluminum door appropriate for environments where maximum light infiltration and/or visual access is required. Designed to fit openings up to 26'11" (8204 mm) wide and 20'1" (6121 mm) high, the 521 Series features a wide, 2 11/16" (68 mm) center stile, a 2 3/8" (60 mm) or 3 3/4" (95 mm) top rail, and 3 3/4" (95 mm) or 4 1/2" (114 mm) bottom rail. Like the 511 Series, the 521 Series is available with a variety of glazing choices, finishes and special options.

Panel Schedule		Section Schedule	
Door Width	Number of Panels	Door Height	Number of Sections
to 8'2" (to 2489 mm)	2	to 8'6" (to 2591 mm)	4
8'3" to 12'2" (2515 mm to 3708 mm)	3	8'7" to 10'1" (2616 mm to 3073 mm)	5
12'3" to 16'2" (3734 mm to 4953 mm)	4	10'2" to 12'1" (3099 mm to 3683 mm)	6
16'3" to 19'2" (4978 mm to 5842 mm)	5	12'2" to 14'1" (3708 mm to 4293 mm)	7
19'3" to 20'11" (5867 mm to 6375 mm)	6*	14'2" to 16'1" (4318 mm to 4902 mm)	8
21'0" to 23'11" (6401 mm to 7290 mm)	8*	16'2" to 18'1" (4928 mm to 5512 mm)	9
24'0" to 26'11" (7315 mm to 8204 mm)	10*	18'2" to 20'1" (5537 mm to 6121 mm)	10

*Special construction. Consult your local Overhead Door Red Ribbon Distributor for additional information.



Installation and Service: Overhead Door Company of Twin Falls

Series 521 Dark Bronze Anodized



Track Detail

Any of the following track configurations can be selected for 511 and 521 Aluminum door models.

O.H.=Opening Height L.C.=Lift Clearance D.H.=Door Height

Standard Lift Track	Lift Clearance Track Standard	Full Vertical Track																											
2" (51 mm) Track [15" (381 mm) Radius] <table border="1"> <thead> <tr> <th>Door Height</th><th>Centerline of Shaft</th><th>Minimum Headroom</th></tr> </thead> <tbody> <tr> <td>Thru 120" (3658 mm)</td><td>O.H. + 11 5/8" (295 mm)</td><td>14 1/4" (362 mm)</td></tr> <tr> <td>Thru 160" (4877 mm)</td><td>O.H. + 12 5/8" (321 mm)</td><td>20 1/2" (521 mm)</td></tr> </tbody> </table>	Door Height	Centerline of Shaft	Minimum Headroom	Thru 120" (3658 mm)	O.H. + 11 5/8" (295 mm)	14 1/4" (362 mm)	Thru 160" (4877 mm)	O.H. + 12 5/8" (321 mm)	20 1/2" (521 mm)	2" (51 mm) Track [15" (381 mm) Radius] <table border="1"> <thead> <tr> <th>Door Height</th><th>Centerline of Shaft</th><th>Minimum Headroom</th></tr> </thead> <tbody> <tr> <td>Thru 120" (3658 mm)</td><td>O.H. + L.C. + 5 5/8" (143 mm)</td><td>L.C. + 8 3/4" (222 mm)</td></tr> <tr> <td>Thru 160" (4877 mm)</td><td>O.H. + L.C. + 5 5/8" (143 mm)</td><td>L.C. + 11 1/4" (286 mm)</td></tr> </tbody> </table>	Door Height	Centerline of Shaft	Minimum Headroom	Thru 120" (3658 mm)	O.H. + L.C. + 5 5/8" (143 mm)	L.C. + 8 3/4" (222 mm)	Thru 160" (4877 mm)	O.H. + L.C. + 5 5/8" (143 mm)	L.C. + 11 1/4" (286 mm)	2" (51 mm) Track [15" (381 mm) Radius] <table border="1"> <thead> <tr> <th>Door Height</th><th>Centerline of Shaft</th><th>Minimum Headroom</th></tr> </thead> <tbody> <tr> <td>Thru 110" (3353 mm)</td><td>O.H. + O.H. + 3/8" (10 mm)</td><td>O.H. + 10 1/4" (260 mm)</td></tr> <tr> <td>Thru 160" (4877 mm)</td><td>O.H. + O.H. + 3/8" (10 mm)</td><td>O.H. + 10 1/4" (260 mm)</td></tr> </tbody> </table>	Door Height	Centerline of Shaft	Minimum Headroom	Thru 110" (3353 mm)	O.H. + O.H. + 3/8" (10 mm)	O.H. + 10 1/4" (260 mm)	Thru 160" (4877 mm)	O.H. + O.H. + 3/8" (10 mm)	O.H. + 10 1/4" (260 mm)
Door Height	Centerline of Shaft	Minimum Headroom																											
Thru 120" (3658 mm)	O.H. + 11 5/8" (295 mm)	14 1/4" (362 mm)																											
Thru 160" (4877 mm)	O.H. + 12 5/8" (321 mm)	20 1/2" (521 mm)																											
Door Height	Centerline of Shaft	Minimum Headroom																											
Thru 120" (3658 mm)	O.H. + L.C. + 5 5/8" (143 mm)	L.C. + 8 3/4" (222 mm)																											
Thru 160" (4877 mm)	O.H. + L.C. + 5 5/8" (143 mm)	L.C. + 11 1/4" (286 mm)																											
Door Height	Centerline of Shaft	Minimum Headroom																											
Thru 110" (3353 mm)	O.H. + O.H. + 3/8" (10 mm)	O.H. + 10 1/4" (260 mm)																											
Thru 160" (4877 mm)	O.H. + O.H. + 3/8" (10 mm)	O.H. + 10 1/4" (260 mm)																											
3" (76 mm) Track [15" (381 mm) Radius] <table border="1"> <thead> <tr> <th>Door Height</th><th>Centerline of Shaft</th><th>Minimum Headroom</th></tr> </thead> <tbody> <tr> <td>Thru 180" (5486 mm)</td><td>O.H. + 14 5/8" (372 mm)</td><td>18" (457 mm)</td></tr> <tr> <td>Thru 320" (9754 mm)</td><td>O.H. + 16 7/8" (429 mm)</td><td>21 1/2" (546 mm)</td></tr> </tbody> </table>	Door Height	Centerline of Shaft	Minimum Headroom	Thru 180" (5486 mm)	O.H. + 14 5/8" (372 mm)	18" (457 mm)	Thru 320" (9754 mm)	O.H. + 16 7/8" (429 mm)	21 1/2" (546 mm)	3" (76 mm) Track [15" (381 mm) Radius] <table border="1"> <thead> <tr> <th>Door Height</th><th>Centerline of Shaft</th><th>Minimum Headroom</th></tr> </thead> <tbody> <tr> <td>Thru 220" (6706 mm)</td><td>O.H. + L.C. + 6 5/8" (168 mm)</td><td>L.C. + 11 1/2" (292 mm)</td></tr> <tr> <td>Thru 320" (9754 mm)</td><td>O.H. + L.C. + 6 5/8" (168 mm)</td><td>L.C. + 12 1/4" (311 mm)</td></tr> </tbody> </table>	Door Height	Centerline of Shaft	Minimum Headroom	Thru 220" (6706 mm)	O.H. + L.C. + 6 5/8" (168 mm)	L.C. + 11 1/2" (292 mm)	Thru 320" (9754 mm)	O.H. + L.C. + 6 5/8" (168 mm)	L.C. + 12 1/4" (311 mm)	3" (76 mm) Track [15" (381 mm) Radius] <table border="1"> <thead> <tr> <th>Door Height</th><th>Centerline of Shaft</th><th>Minimum Headroom</th></tr> </thead> <tbody> <tr> <td>Thru 180" (5486 mm)</td><td>O.H. + O.H. + 3/8" (10 mm)</td><td>O.H. + 10 1/4" (260 mm)</td></tr> </tbody> </table>	Door Height	Centerline of Shaft	Minimum Headroom	Thru 180" (5486 mm)	O.H. + O.H. + 3/8" (10 mm)	O.H. + 10 1/4" (260 mm)			
Door Height	Centerline of Shaft	Minimum Headroom																											
Thru 180" (5486 mm)	O.H. + 14 5/8" (372 mm)	18" (457 mm)																											
Thru 320" (9754 mm)	O.H. + 16 7/8" (429 mm)	21 1/2" (546 mm)																											
Door Height	Centerline of Shaft	Minimum Headroom																											
Thru 220" (6706 mm)	O.H. + L.C. + 6 5/8" (168 mm)	L.C. + 11 1/2" (292 mm)																											
Thru 320" (9754 mm)	O.H. + L.C. + 6 5/8" (168 mm)	L.C. + 12 1/4" (311 mm)																											
Door Height	Centerline of Shaft	Minimum Headroom																											
Thru 180" (5486 mm)	O.H. + O.H. + 3/8" (10 mm)	O.H. + 10 1/4" (260 mm)																											

Low Headroom Track Springs to Front

2" (51 mm) Track [15" (381 mm) Radius]

Door Height	Centerline of Shaft	Minimum Headroom
Thru 12'0" (3658 mm)	D.H. + 8" (203 mm)	11 3/4" (299 mm)
Thru 16'0" (4877 mm)	D.H. + 8" (203 mm)	12 1/2" (318 mm)

3" (76 mm) Track [15" (381 mm) Radius]

Thru 12'0" (3658 mm)	D.H. + 9" (229 mm)	13" (330 mm)
Thru 32'0" (5486 mm)	D.H. + 9" (229 mm)	13 3/4" (349 mm)

Low Headroom Track Springs to Rear

2" (51 mm) Track [15" (381 mm) Radius]

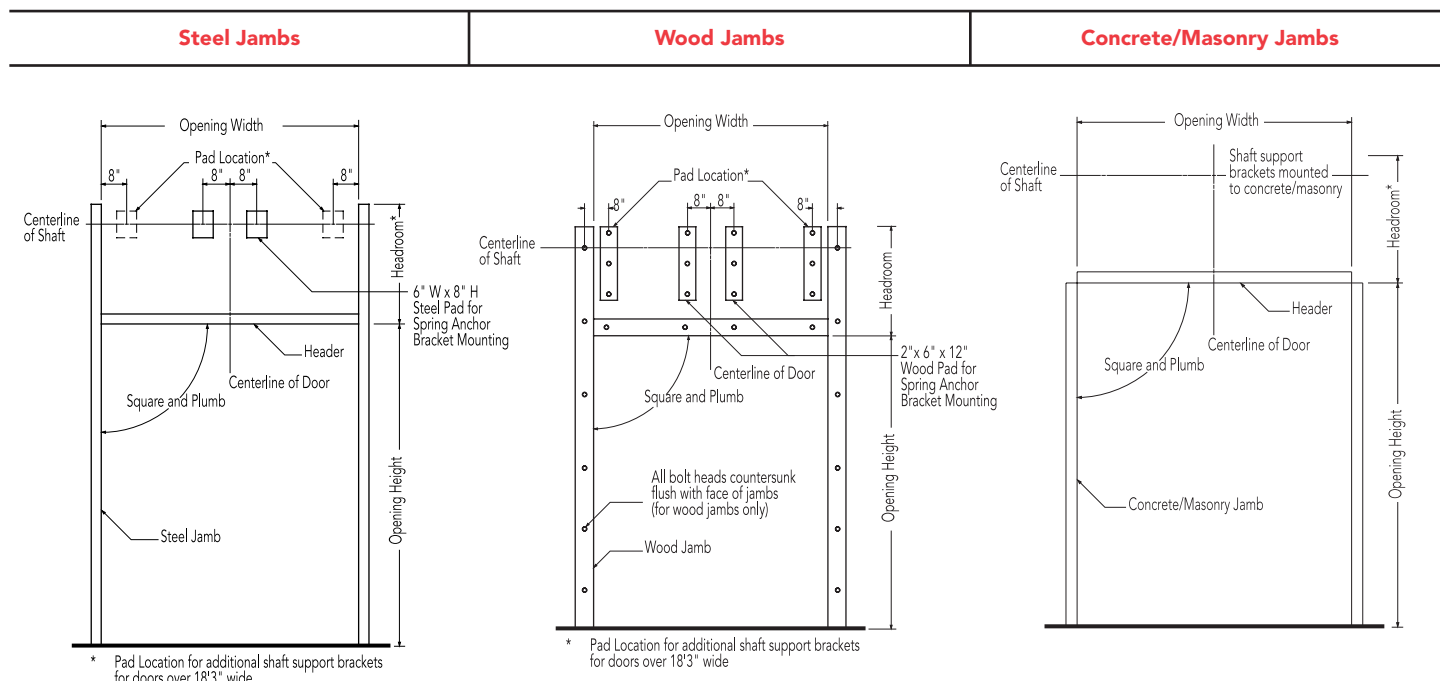
Door Height	Centerline of Shaft	Minimum Headroom
Thru 12'0" (3658 mm)	O.H. + 2" (51 mm)	7 1/2" (191 mm)
Thru 16'0" (4866 mm)	O.H. 2" (51 mm)	8" (203 mm)

3" (76 mm) Track [15" (381 mm) Radius]

Thru 18'0" (5486 mm)	O.H. 6 3/4" (171 mm)	9 3/4" (248 mm)
----------------------	----------------------	-----------------



Framing and pad details for common installation of Aluminum doors in steel, wood, concrete and masonry jambs are provided here. If you require additional information or have special project requirements, refer to the Overhead Door Architectural Design Manual, (www.OverheadDoor.com/ADM/base.html) or consult with the Overhead Door Applications Engineering Group or your local Overhead Door distributor.



2" (51 mm) Track			2" (51 mm) Track			2" (51 mm) Track		
3" (76 mm)* Track			3" (76 mm)* Track			3" (76 mm)* Track		


Minimum Required Sideroom			Minimum Required Sideroom			Minimum Required Sideroom		
Track Type	2" Track (51 mm)	3" Track (76 mm)*	Track Type	2" Track (51 mm)	3" Track (76 mm)*	Track Type	2" Track (51 mm)	3" Track (76 mm)*
Standard Lift	4 1/2" (114 mm)	6 1/2" (165 mm)	Standard Lift	3 1/2" (89 mm)	5 1/2" (140 mm)	Standard Lift	4 1/2" (114 mm)	6 1/2" (165 mm)
Low Headroom	9" (229 mm)	10" (254 mm)	Low Headroom	8" (203 mm)	9" (229 mm)	Low Headroom	9" (229 mm)	10" (254 mm)
Lift Clearance	4 1/2" (114 mm)	6 1/2" (165 mm)	Lift Clearance	3 1/2" (89 mm)	5 1/2" (140 mm)	Lift Clearance	4 1/2" (114 mm)	5 1/2" (140 mm)
Full Vertical	4 1/2" (114 mm)	6 1/2" (165 mm)	Full Vertical	3 1/2" (89 mm)	5 1/2" (140 mm)	Full Vertical	4 1/2" (114 mm)	5 1/2" (140 mm)

* 3" (76 mm) track not available with 598 Series.

Operator Control Options

- Push-button, key or combination stations; surface- or flush-mounted for interior and/or exterior locations
- Vehicle detectors, key card reader, photocell and door timer controls
- Treadle or pull switch stations
- Telephone entry and coded keyboard stations
- Universal programmable door timer
- Radio control systems (24 VAC or 120 VAC)
- Explosion and dust ignition-proof systems

Electric Operator Selection Guide

	Horsepower/ Newtons	Max. height of door	Max. weight of door	Super Belt™/Polybelt	Worm gear	Adjustable clutch	Totally enclosed	Continuous duty	Explosion proof	Mounting type
										
RHX®	1/2 HP, 3/4 HP 1 HP, 3 HP	24' (7315 mm)	3696 lbs (1676 kg)		•	•		•	•	T, S, C
RSX®	1/2 HP, 3/4 HP 1 HP	24' (7315 mm)	1620 (735 kg)	•		•	•	•		T, S, C
RMX®	1/2 HP	14' (4267 mm)	620 (281 kg)	•						T, S
RDX®	650 N, 1300 N	33' (10,057 mm)	900 (509 kg)	•						S

Mounting Options: T=Trolley S=Side mount C= Center mount

Safety Recommendations

Overhead Door Corporation strongly recommends the use of a primary safety device as defined by UL325 2010. A primary safety device can be approved monitored photo-eyes or an approved monitored sensing edge. If a primary safety device is not installed, a constant contact control switch must be used to close the door. Contact Overhead Door for more information.

Model RDX®

The RDX® is designed for limited space applications and is available in both medium and standard duty motor options designed to operate doors up to 40' (12,192 mm) in height and 900 pounds (409 kg). It offers unique features like a lightweight DC motor, automatic limit setting and sensitive obstruction detection.



Overhead Door Corporation offers the broadest line of electric operators to suit new construction and retrofit applications, as well as unusual or special requirements.

Manufactured by Overhead Door Corporation to meet the exacting performance requirements of Overhead Door's upward-acting doors, our ribbon branded operators afford precise control of door action for years of trouble-free operation.

In order to improve safety and enhance door and motor life, industry quality assurance guidelines recommend the choice of a single manufacturer for both door and operator applications. Overhead Door Corporation is one of the only national manufacturers to offer a full line of commercial and industrial doors and operators specifically designed for integral applications.

Operator Models

Model RMX®

Model RMX® is our newest, most advanced medium-duty operator. It is designed for quicker installation and hassle-free operation and operates doors up to 14' (4267 mm) in height and 620 pounds (282 kg). It is available as a trolley-type or side-mounted unit.



Model RSX®

Model RSX® is a standard duty commercial operator designed to operate doors up to 24' (7315 mm) in height and 1620 pounds (735 kg). It offers unique features like LimitLock®, SuperBelt™ & 16 digit menu setup.



Model RHX®

Model RHX® is a heavy duty commercial operator designed to operate doors up to 24' (7315 mm) in height and 3696 pounds (1676 kg). Available as either a trolley, sidemount or centermount.

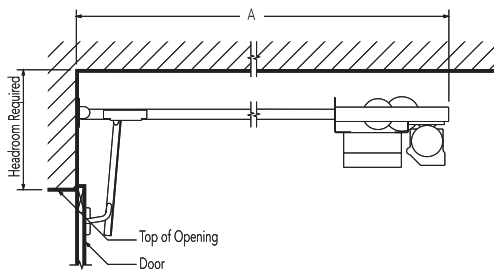




Mounting Details

Trolley-type (Drawbar) operators feature a power unit mounted between, above and to the rear of the horizontal tracks. The drawbar drive provides positive control of the door at all times, making this operator the preferred choice whenever possible. Maximum door width is 20' per drawbar. Door width over 20' requires dual drawbar installation. Available on Models RMX[®], RSX[®] and RHX[®].

Trolley-type (Drawbar) RMX[®], RSX[®], RHX[®]

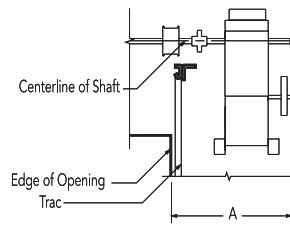


Minimum Headroom Requirements	
RMX [®]	Track Requirements +4 1/2" (114 mm)
RSX [®]	Track Requirements +5" (127 mm)
RHX [®]	Track Requirements +5" (127 mm)

Depth Requirements - "A" Dimension (Backroom)	
RMX [®]	Door Height +4' 0" (1219 mm)
RSX [®]	Door Height +4' 0" (1219 mm)
RHX [®]	Door Height +4' 10" (1219 mm)

Side-mounted (Jackshaft) RMX[®], RSX[®], and RHX[®] operators feature a power unit mounted on the inside front wall and connected to the crosshead shaft, with an adjustable coupling or drive chain and sprockets. Side-mounted (jackshaft) RDX[®] operators feature a power unit mounted directly to the cross header shaft, and secured to the door track.

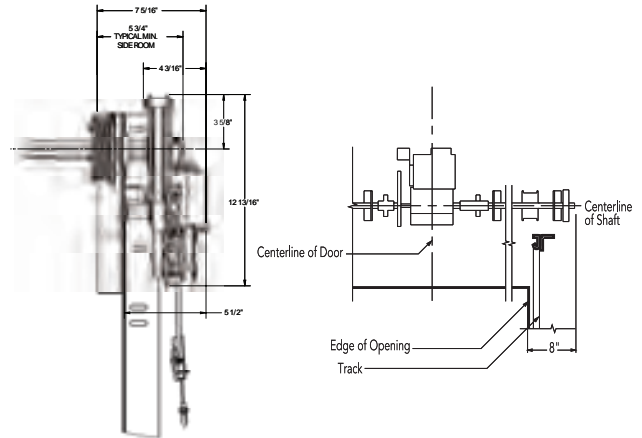
Side Mount Type (Jackshaft) RMX[®], RSX[®], RDX[®], RHX[®]



"A" Dimension - Minimum (Sideroom)		
	2" Track (51 mm)	3" Track (76 mm)*
RMX [®]	18 1/2" (470 mm)	19 1/2" (495 mm)
RSX [®]	21" (533 mm)	22" (559 mm)
RHX [®]	21" (533 mm)	22" (559 mm)
RDX [®]	5 3/4" (146 mm)	5 3/4" (146 mm)

Center-mounted (Jackshaft) operators feature a power unit on the front wall above the door opening. No additional backroom is required. Available on models RSX[®] and RHX[®].

Center Mount Type/Jackshaft RSX[®], RHX[®]



Minimum Headroom Requirements	
RSX [®]	Track Requirements +14" (356 mm)
RHX [®]	Track Requirements +23 5/8" (600 mm)

The Original, Innovative Choice for Unequalled Quality and Service

Overhead Door Corporation pioneered the upward-acting door industry, inventing the first upward-acting door in 1921 and the first electric door operator in 1926. Today, we continue to be the industry leader through the strength of our product innovation, superior craftsmanship and outstanding customer support, underscoring a legacy of quality, expertise and integrity. That's why design and construction professionals specify Overhead Door Corporation products more often than any other brand.

The Overhead Door Red Ribbon is a mark of quality that also reflects the pride we take in the people who support our products. Our family of over 400 Ribbon Distributors across the country not only share our name and logo, but also our commitment to excellence. Your Ribbon Distributor will work with you in a consultative role to ensure that product selections achieve your design and application requirements — in addition to offering expert installation, professional field service and ongoing maintenance. From project design and manufacturing to installation and service, the Overhead Door Red Ribbon is your guarantee of genuine quality and turnkey service excellence.

Together with our Red Ribbon Distributors, we offer comprehensive technical information and resource materials to support your project, including:

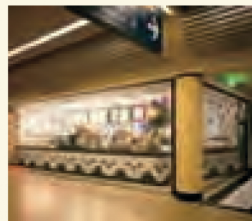
- Architectural Design Manual – a comprehensive guide to selecting, specifying and detailing all commercial and industrial Overhead Door products can be found at www.OverheadDoor.com/ADM/base.html
- Operation & Maintenance Manual – detailed product information, customized for your project, to ensure reliable, long-life door system operation
- Custom application and technical assistance through ordering plants' customer service and technical services respectively
- Visit our Architect's Corner at www.OverheadDoor.com



Advanced Rolling Steel Door
RapidSlat®



Thermacore® Sectional Doors



Rolling & Side Folding
Security Grilles & Closures



Rolling Service Doors



Commercial Operators

Today, Overhead Door Corporation – along with our Horton Automatics division, for automated pedestrian entrances – is recognized as the leading, single-source manufacturer of integrated door and operator systems for commercial, industrial and residential applications. With multiple manufacturing locations throughout the United States, a state-of-the-art TREQ (Testing, Reliability, Engineering, and Quality) Center for design and engineering, and a national network of authorized Red Ribbon Distributors, our capabilities are leading-edge and our field service and technical support second to none. Built best and backed best, Overhead Door is the industry's leading choice for quality that shows and lasts.

Overhead Door Company of The Meadowlands & NYC

20 Meta Lane, Lodi NJ 07644

www.overhead-doors.com | info@dockndoor.com | t. 973-471-4060 | 973-471-6707



INDUSTRY LEADING
COMMERCIAL & INDUSTRIAL SOLUTIONS



A part of Sanwa Holdings Corporation