

DataMAX Software Group, Inc.
El Dorado Hills, CA
USA

Oracle JD Edwards

RECEIPTS BY PO/LINE OR ITEM

This application efficiently receives items by Purchase Order (PO) or line item into a warehouse. At receipt, a location can be assigned and a lot or serial number recorded if the item is lot-controlled.

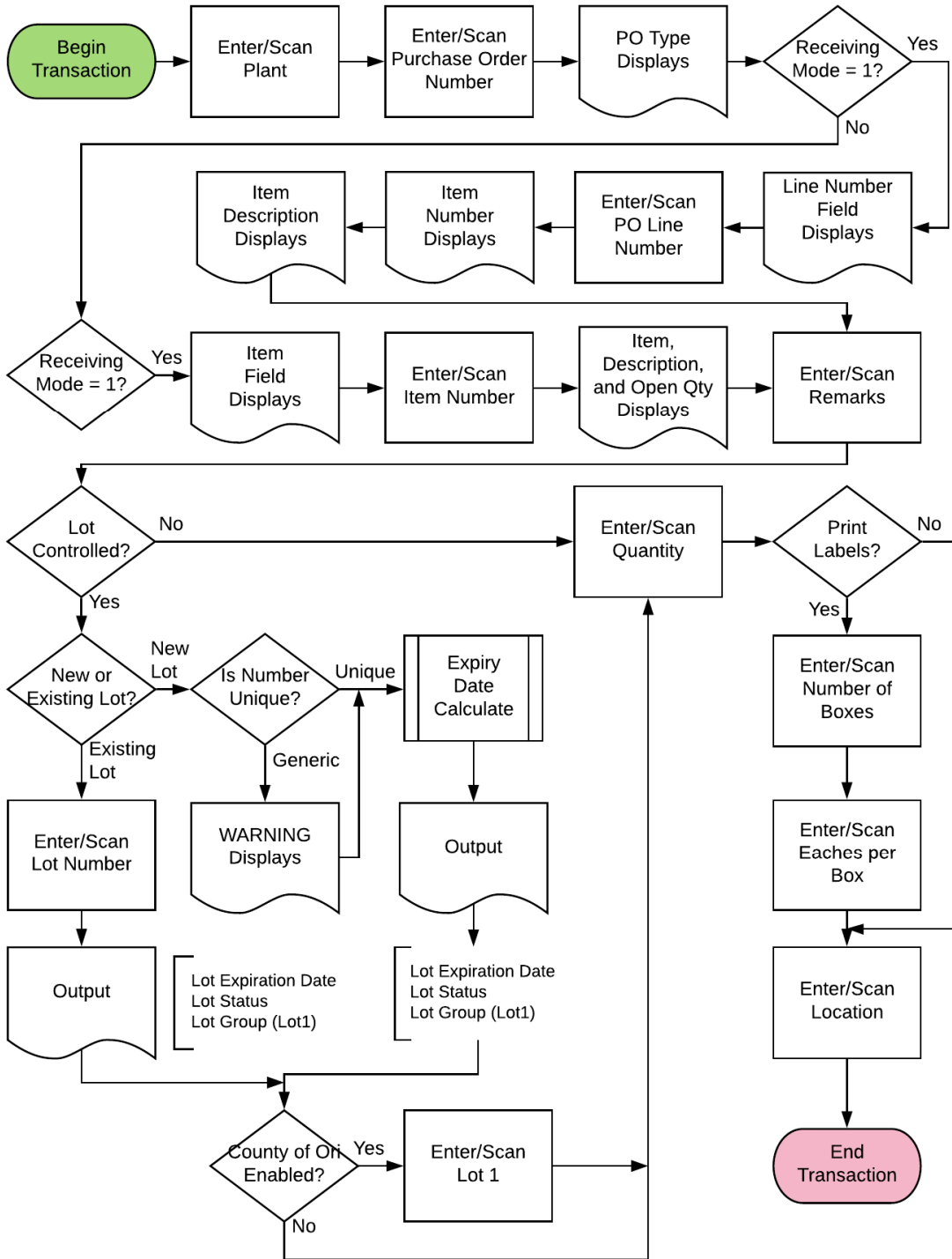
RFgen Functional Documentation
2019

RFgen provides its customers Oracle-validated, ready-to-use suites of Open Source applications and a development environment that can be used to create new apps or to modify existing applications.

This document describes the business workflow and technical information used in this application.

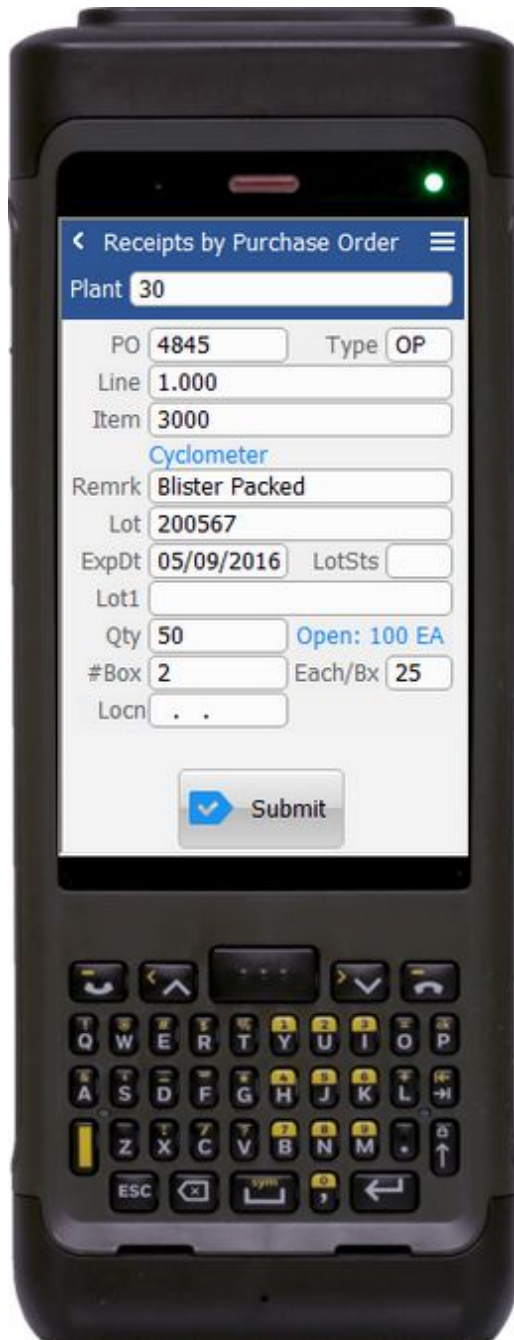


JD Edwards: PO - Receipts by PO/Line or Item Workflow



FPOLR0100 PO – Receipts by Purchase Order Line or Item

This application receives items by PO into a warehouse by scanning or entering the PO line or item(s). At receipt, a location can be assigned, and a lot or serial number recorded if the item is lot-controlled. A receipt record is recorded into the item ledger (cardex) in EnterpriseOne. The option to invoke the Sales Order backorder release process also exists.



Description of Workflow

First the user scans, enters, or searches for a plant value if one is not defaulted from the user's profile.

Then the user scans, enters, or searches for the PO.

The order type displayed in the Type field.

The fields that display from this point on depends on the JDE receiving mode settings, and the JDE processing option versions used.

The JDE Receiving Mode options are:

- 1 = Receipt by Purchase Order
- 2 = Receipt by Item

If the receiving mode is 1, the line field will display, and the user searches and selects the PO line (Line). The line number, item number, item description, and the PO open quantity with the UOM display.

If the receiving mode is 2, the item number field will display. The user scans or searches and



selects the item number and upon validation, the item description, PO open quantity with the UOM will display.

The user enters any remarks regarding receipt of this item such as any observations, damages or missing items etc.

Upon entry of remarks, if the item is lot-controlled, the lot, expiration date (ExpDt), lot status (Lotsts) and lot group (Lot1) fields may display and enabled for entry depending on the protection level settings in the JDE version proc options. For example, if the lot information is allowed to display and is unprotected, the user will be able to access the lot number, expiry date, lot status and lot1 fields.

If items are to be received into an existing lot, the user can search and select the lot number. Its respective expiration/expiry date, lot status, lot1 information will be retrieved and displayed.

If the user enters a new lot number and the lot number entered is not unique (i.e it is assigned to other items) a warning prompt will display.

If the lot number is newly assigned, an expiration date will be calculated based on the item's shelf life days. The expiration date will be automatically entered in the ExpDt field, and the optional Lotsts field will be left blank.

If the country of origin is set up in the udc 55/CO, the user will have the option to enter the Lot1 field.

Next, user enters the receipt quantity. The entry must be numeric is mandatory.

If printing of box labels is required, and a printer has been setup, the user will have the option to enter the number of boxes in the #Box field. The application will fill in the quantities in the Each/Bx field. For example, if the receipt quantity is 60 for 3 boxes, and the system enters 20 in the Each/Box field. Then the system prints the same number of labels as listed in the #Box field. In this example 3 labels will be printed.

Next, the user enters the warehouse location (Locn) that is receiving the items.



The **Submit** button sends the transaction to JDE at which time the form will reset by clearing all fields. A receipt record is recorded into the item ledger (cardex) in EnterpriseOne.

The arrow in the upper left corner, when clicked on, will take the user back to the menu.

Technical Information

The following describes the tables used for validation, search lists, or functions for a given prompt in this application. If applicable, the default property is also included.

Prompt	Table	Description
Plant	F41001	Default user settings in RFgen
PO	F4301	PHDOCO
Line#	F4311	PDLNID
Item	F4311	PDLITM
Lot	F4108	IOLOTN
ExpDt	F4108	IOMMEJ
Lotsts	F4108, UDC 41/L	IOLOTS
Lot1	F4108, UDC 55/CO	IOLOT1
Locn	F41021, F4100	LILOCN

Customization Considerations

If you are planning on creating a new version of this application or modifying it for a customer, consider asking these questions to help prepare your list of customization requirements.

1. What EnterpriseOne version is used to process the PO Receipt transaction by Line and by Item?
2. What processing options have you set to process Receipts?
3. Do you allow partial receipts?
4. Do you use receipt routing?
5. Do you want the branch plant default based on user?



6. Do you allow receiving into different locations within the warehouse or are there designated receiving location(s)?
7. Do you use lot control or serialization?
8. Do you want to invoke the Sales Order backorder release process and transfer items to a shipping location for the ship confirm?

