



Bill of Materials

Fact Sheet

SYSPRO Bill of Materials facilitates an accurate expected cost against which to track actual production costs. The complete bill forms the basis for material and capacity planning, shop floor control and costing. You can create and maintain a model of your manufactured or assembled products as well as generate what-if costing scenarios.

The Bill of Materials system enables you to construct quantity or percentage relationships between assemblies (final product) sub-assemblies (bulk batches) and components (raw materials) using up to 15 levels and you can assign each component to a selected operation in the parent routing.

You can model the routing (i.e. the relationship between work centers and the time taken by the various elements of capacity usage) of the product to accommodate varying size batches, milestone operations, progressive scrap and dynamic elapsed times. The routing can also include information on tooling, operator skill levels, operation instructions, testing requirements, etc.

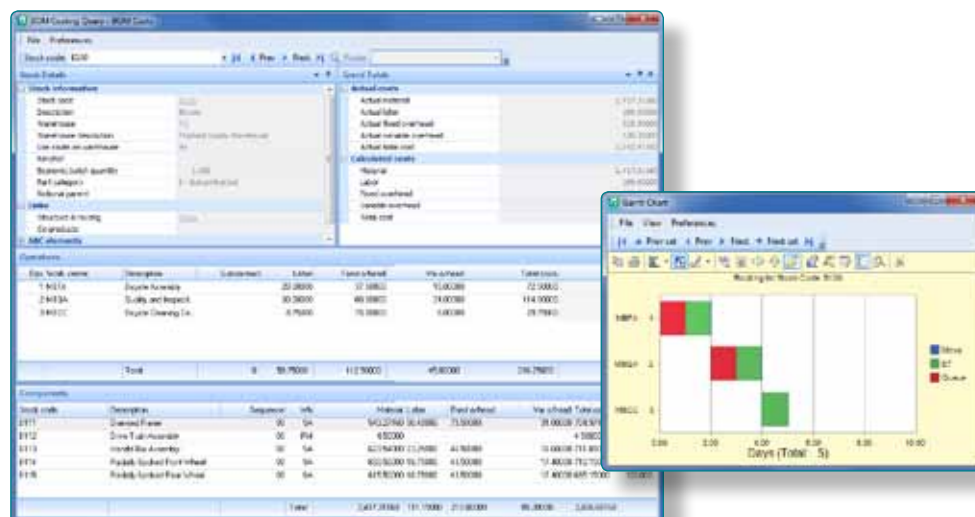
Full bill of material costing and what-if costing facilities are provided, as well as the facility to calculate the cumulative and manufacturing lead times of an item and to update the relevant fields against the stock item.

Various types of bills can be added:

- Planning bill
- Batch bill
- Single Level bill (kits)
- Phantom part (part of a BOM for grouping purposes)
- Notional part (part of a BOM for Co-Products)
- Made-in bill

For more information related to SYSPRO's Bill of Material offering please also refer to the following:

- SYSPRO Engineering Change Control (ECC) - enables you to improve your management of engineering changes to your products. It enforces discipline and management control over modifications to bills of materials and shop floor routings.
- SYSPRO Activity Based Costing (ABC) - enables you to more accurately apportion overhead costs to specific products, the aim being to associate elements of overhead cost to those products that actually cause the cost.





The Facts

Fact Sheet

The Benefits of Bill of Materials

- Intuitive tree-view display with operational Gantt Charts
- Analyze BOM and 'what-if' costs
- Compare BOM costs to current inventory costs
- Identify material shortages with multi-level trial kitting
- Support planning bills, phantom parts and sub-contract operations
- Optional components supported for sales of kits
- Track effectivity dates of components
- Define scrap factors for more accurate planning
- Define routes per location for accurate costing and planning
- Plan for co- and by-products, apportioning costs accurately

Bill of Materials Features

- Supports up to 15 levels
- Multiple recovery rates per cost center, work center and employee
- Track time and capacity in different units of measure
- Define component requirements up to 6 decimal places
- Document routing instructions and component notes
- Link pictures and videos to Bill of Materials
- Validate structures and operations and provide notification of potential problems
- Calculate BOM costs per warehouse
- Define movement time between operations
- Calculate manufacturing lead times
- 'Where-used' query with 'replace where-used' function
- Import structure and routings from third-party systems (e.g. CAD)

- Calculate dynamic-elapsed time and capacity required
- Transfer rolled-up BOM costs to unit cost of item
- Indicate move time between work centers
- Capacity calendar per work center and productive units
- Define components as quantity per, % of parent or specific quantity regardless of batch
- Indicate scrap percentage and/or quantity with optional progressive scrap
- Define and process parent and component quantities in a unit of measure other than stocking
- Update work center information when associated cost center information changes

Integration with SYSPRO

- Inventory (Essential)
- General Ledger
- Product Configurator
- Quotations
- Requirements Planning
- Sales Orders
- Work in Progress

Audit trails and reporting

- User-defined selection criteria for flexible reporting
- Detailed 'where-used' reporting
- Extensive BOM costing reports
- Reports complete routing information
- Trial kitting list highlights quantity requirements and shortages
- Listings of manufactured parts with and without a structure attached
- Various BOM profiles provided

