



Powerful and Flexible

Star-Link is written using Microsoft's latest software technology utilizing the .NET framework, Web Services, and the latest MSSQL database. Using Microsoft technology allows seamless integration with MS Excel and the entire MS Office suite of products. Star-Link was recently benchmarked at Microsoft's test facility in Silicon Valley and processed 147,000 transactions per hour when tested on a medium-size enterprise-class server.

The Star~Link Enterprise edition offers companies with multiple sites the ability to communicate inventory information, sales transaction data, and promotional events between stores. Star~Link allows for centralized management of the product file for all stores within the entire chain. Pricing strategies can vary across regions or zones and can be controlled by headquarters. Depending on company strategy, the individual sites can be given partial or full control over the product file, or the system can be locked down with headquarters maintaining complete control. Whatever the business model, Star~Link has the flexibility to meet your requirements.

Star~Link communicates with either the Star~Lite or Star~Plus POS systems used by the individual stores. Sites connect to Star~Link via an existing WAN or VPN. Real-time communication from site to head office gives you up-to-the-minute sales history, inventory levels, and transaction detail in each of your stores. If you find stores overstocked you can use the Store Transfer feature to transfer inventory from one site to another.

Star~Link also incorporates centralized purchasing and receiving for companies looking to take advantage of economies of scale. The Star~Link warehouse feature allows stores to transmit orders to the warehouse for fulfillment and then forward the remainder of the order to the wholesaler for completion.

Core Features:

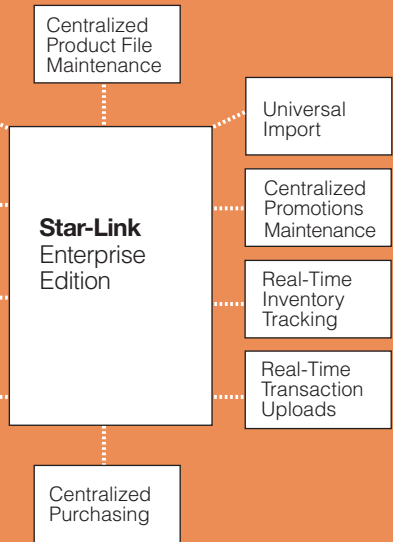
Centralized Product File Maintenance

- Add new items and update existing items at the Branch, Store Group, or Store level
- Download item file additions and changes to applicable sites immediately or via a batch update at night

- Maintain company-wide product descriptions and product categorization, ensuring accurate reporting across the chain
- Maintain vendor costs for all stores
- Import vendor files to create new items or update existing ones using the Universal Import Program

Centralized Promo Maintenance

- Create and maintain promotions at head office and download these promotions for activation at applicable stores
- Take advantage of bulk buys and special deals from vendors by combining all store orders with the Call-For-Order feature
- Analyze your promotional events using built in reporting tools
- Import vendor files to create promotional events, speeding the creation of your promotions using the Universal Import Program



The Star-Link Head Office System integrates fully with the RMS Warehouse Solution.

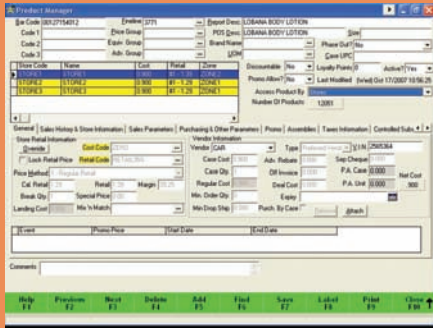
Web Based Flexible Reporting

- Implement and manage Internet based reporting throughout the enterprise
- Utilize Microsoft SQL Server Reporting Services
- Deploy built-in reports, build your own or use an on-line report builder
- Easy to use drill-down based interface through Internet Explorer
- Export reports to PDF, native Excel and web archive files

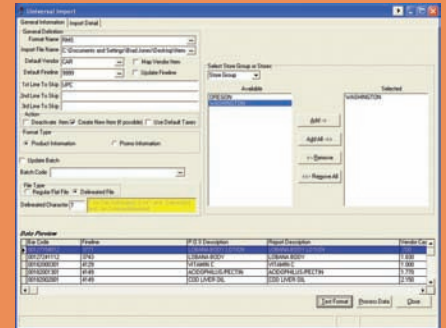
Centralized Data Cubes and Data Mining

- View data for some or all stores dynamically
- Utilize data analysis and mining through SQL Server Analysis Services
- Query the entire business quickly and efficiently on multiple dimensions (Time/Stores/Departments/etc.)
- Aggregate data and track Key Performance Indicators (KPIs)
- Browse data in interactive applications such as Microsoft Excel

(over)



Left: The Star~Link Product Manager allows you to update and view item information, sales history, and inventory levels at the Branch, Store Group, and/or individual Store level.



Right: Add or update items and create promotional events for the entire chain, store group, or individual stores using the Universal Import program.

### Additional Features:

In addition to the numerous core features offered with Star~Link, you may select any of these modules to enhance your operations:

#### Centralized Accounts Receivable

This feature allows your customers charge privileges at all locations via one centralized A/R account. Since all sites use a centralized file, each store has identical information and monthly statements can be generated and sent from the headquarters.

- Maintain customer information and pricing for all stores
- Add or modify customer information at each store and update head office
- Customers can charge or pay on account at any linked store

#### Centralized Loyalty Program

Similar to Accounts Receivable, a customer can generate loyalty points in all applicable stores and totals will be recorded and maintained centrally.

- Maintain customer information and loyalty points for all stores
- Add or modify customer information at each store and update head office
- Customers can redeem points at any linked store

#### Centralized Purchasing and Ordering Booking

Star~Link maintains the flexibility to allow stores the option to continue purchasing products directly from distributors or through centralized purchasing. Orders can be consolidated, transmitted, and drop-shipped to individual sites or orders can be received at one site and parceled out as appropriate.

- Amalgamated Orders – Combine all store orders into one to take advantage of vendor bulk buys and special pricing
- Call For Order – From Headquarters you can request stores place an order for items on an upcoming promotional event, allowing you to take advantage of special price allowances

#### Order Desk for Warehouse Operations

Star~Link maintains the flexibility to allow stores the option to continue purchasing products directly from distributors or through your warehouse. The system has many options depending on your needs. You can require specific items to be purchased from the warehouse while allowing others to go directly to the distributor. Orders can be consolidated, transmitted, and drop shipped, or orders can be received by a warehouse and parceled out as appropriate.

- Stores can electronically order directly from the warehouse with out of stock items being forwarded to a secondary vendor for completion
- Generate warehouse picking sheets automatically
- Electronically invoice stores, updating their original purchase order automatically
- The warehouse can maintain inventory levels and use purchasing and receiving functions

Contact RMS today:

Toll Free: 1.877.767.1060

Email: sales@rm-solutions.com

Web Site: www.rm-solutions.com



The Industry Leader in Pharmacy Point-of-Sale Innovation