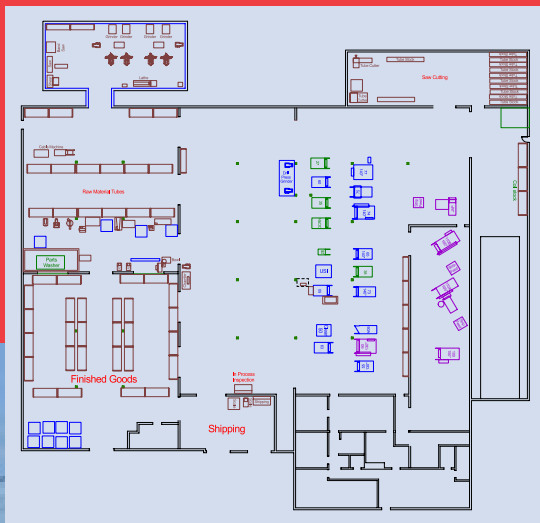
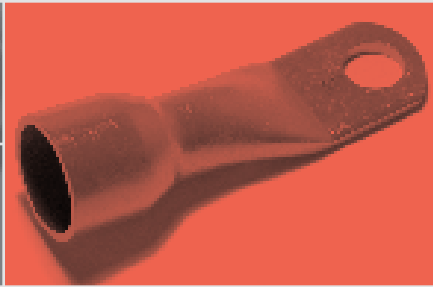




Asked... Answered.

Virtual Plant Tour



- **World Class Capabilities**
- **Unsurpassed Service**
- **World-Cost Competitive**
- **MADE IN AMERICA!**



Indoor Container Unload

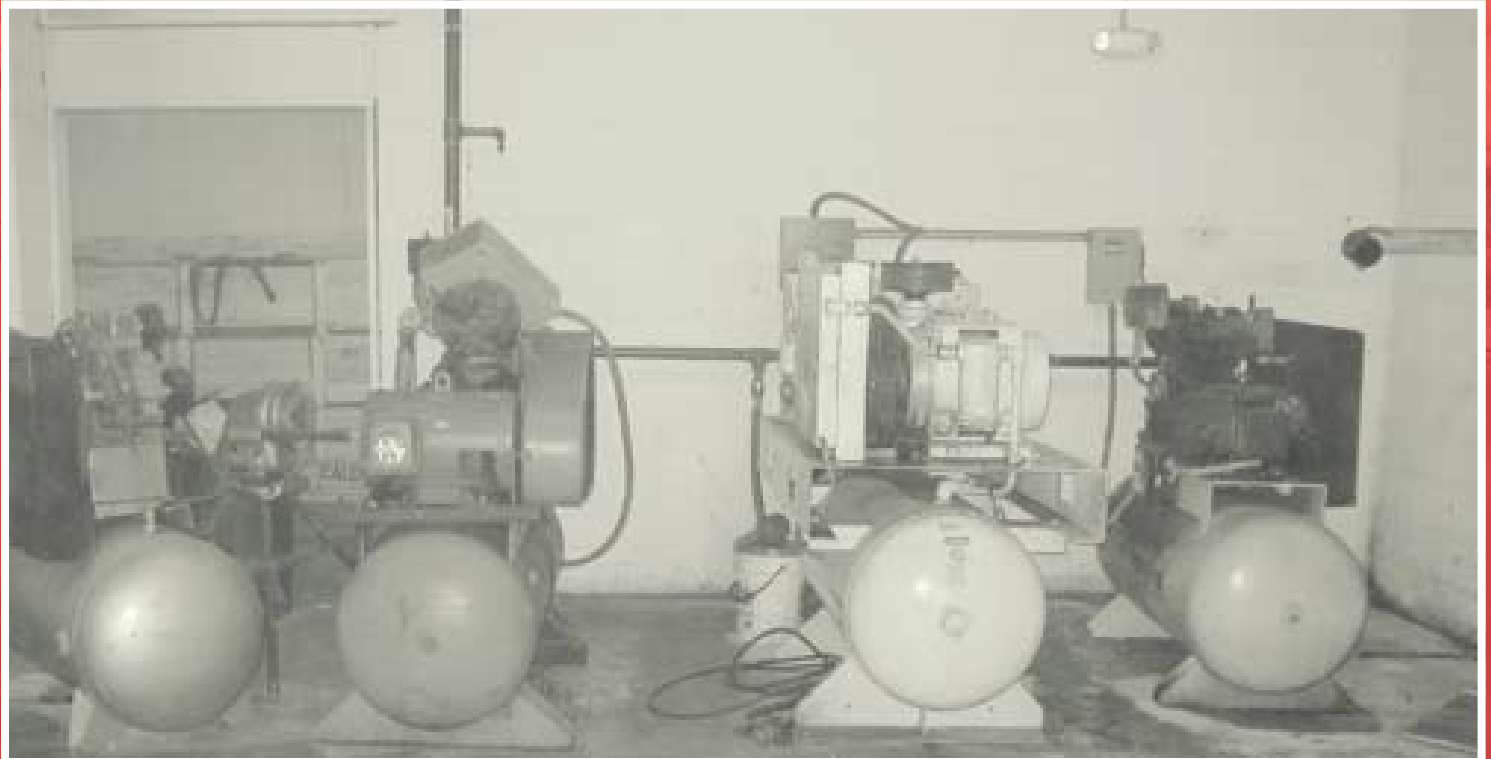
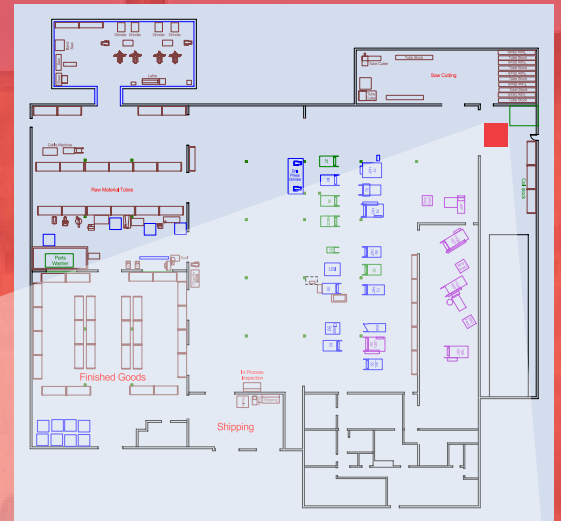
- 40 foot trailer/container unload in less than 4 hours.
- Worldwide lowest cost sourcing.



Continued on next page

Compressed Air Capacity

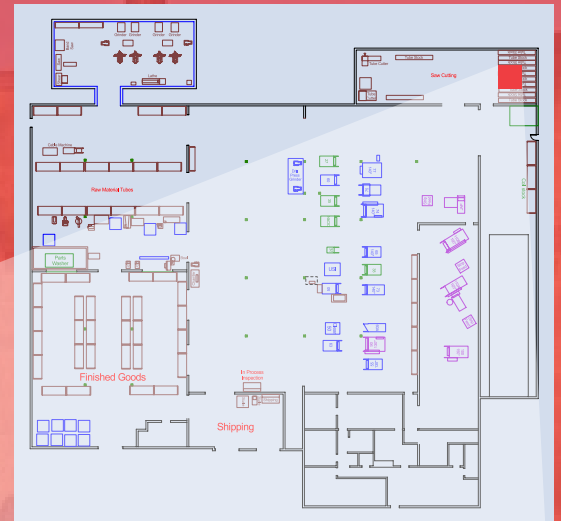
- 125 horsepower rotary screw compressor capability.



Continued on next page

Raw Material Storage

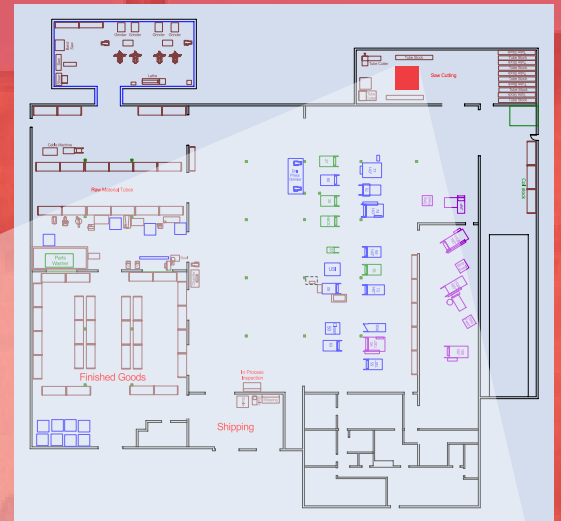
- Capacity for 3 containers.



Continued on next page

Automatic Cold Saws

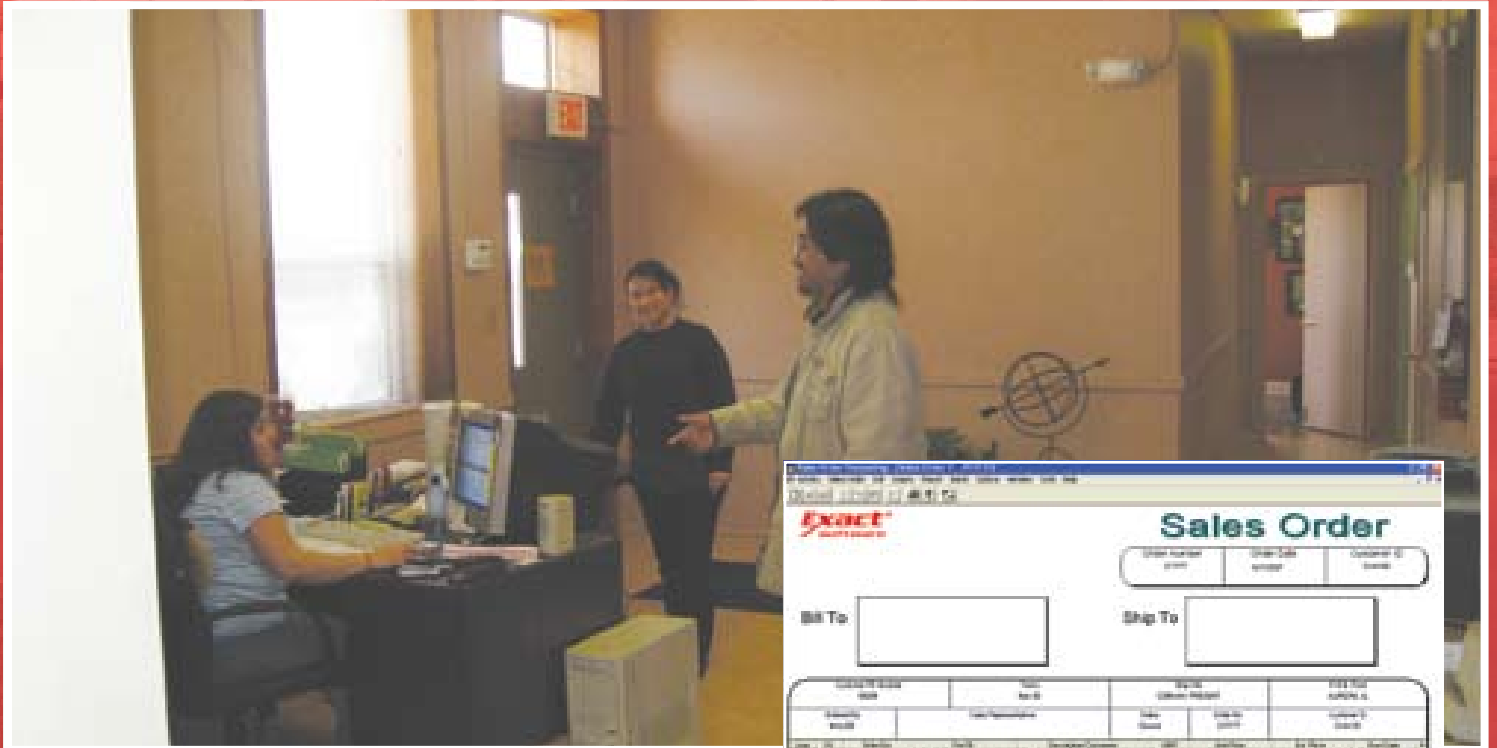
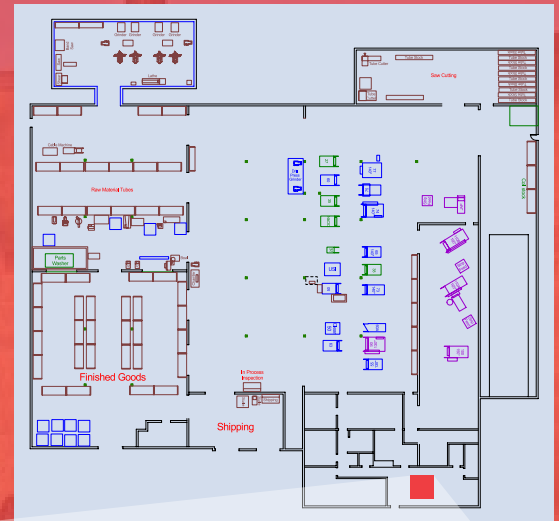
- Capacity for 2.1MM parts per month expandable to 4.2MM.



Continued on next page

Customer Service Dedication

- 97% on time performance
- Friendly professional service
- “Institutional Memory” for your parts, ordering pattern, and sourcing needs.
- Emergencies, compressed lead time, stocking: whatever it takes to serve you!

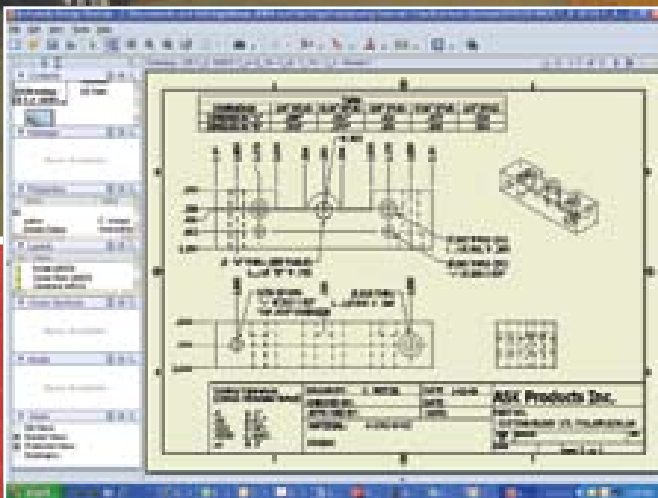
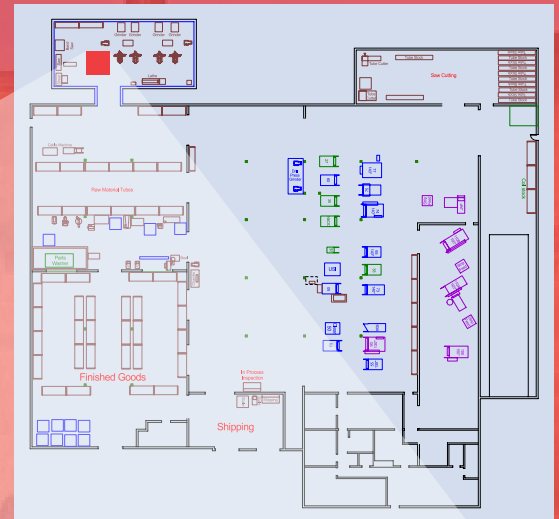


Customer Name		Part Name		Part Description		Part Price		Part Quantity	
1	1000000000	1000000000	1000000000	1000000000	1000000000	1000000000	1000000000	1000000000	1000000000
2	1000000000	1000000000	1000000000	1000000000	1000000000	1000000000	1000000000	1000000000	1000000000
3	1000000000	1000000000	1000000000	1000000000	1000000000	1000000000	1000000000	1000000000	1000000000
4	1000000000	1000000000	1000000000	1000000000	1000000000	1000000000	1000000000	1000000000	1000000000
5	1000000000	1000000000	1000000000	1000000000	1000000000	1000000000	1000000000	1000000000	1000000000

Continued on next page

Complete In-House Tooling Capability

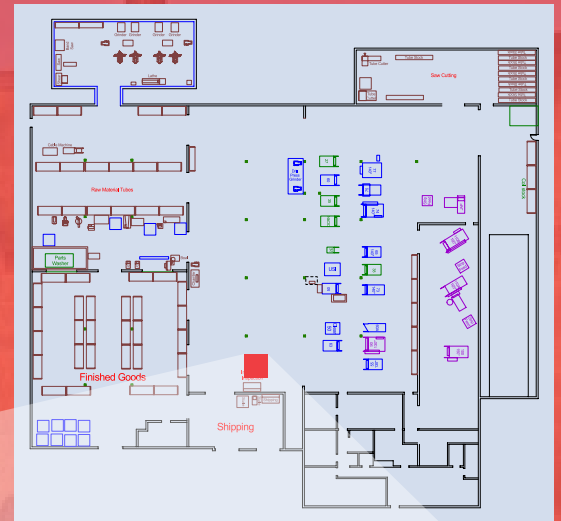
- Tool Engineering
- Product Design
- Prototype Development
- Special Applications



Continued on next page

Die Storage

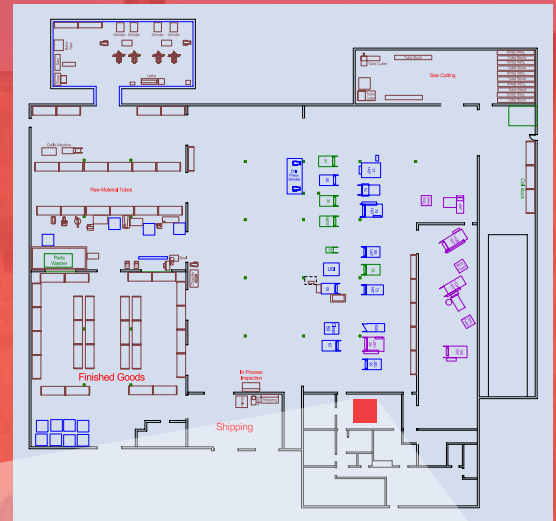
- ASK can tool a whole product line in less than 8 weeks, a key modification in less than a week!



Continued on next page

ISO9000-2000 Quality System

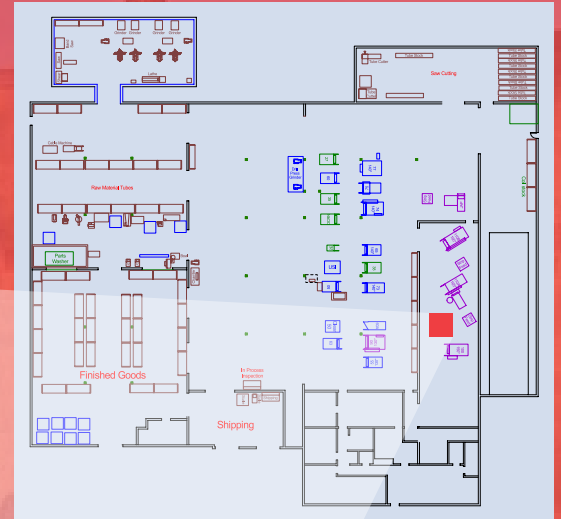
- Automated inspection and statistical process control ensure your part is right every time!



Continued on next page

High Volume Work Center

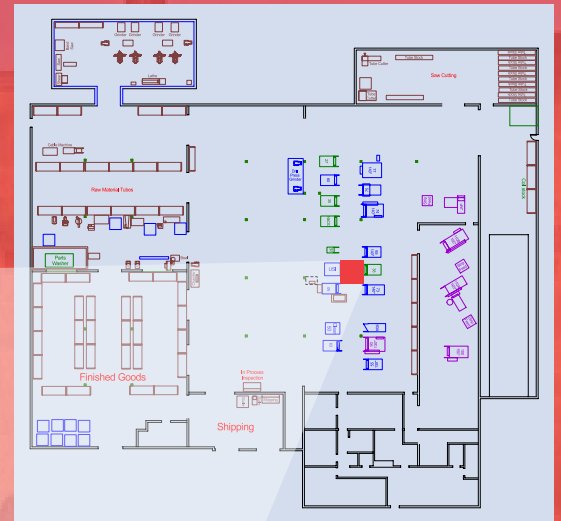
- 20 high volume presses
- 50% expansion in one year!



Continued on next page

Large Tonnage Presses

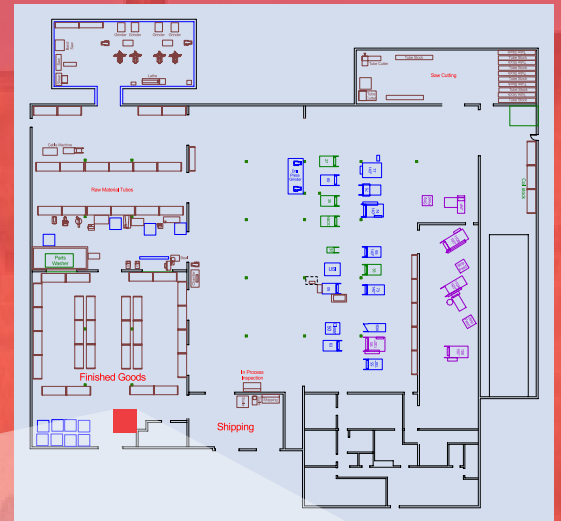
- 5 Presses with greater than 90 Ton Capacity



Continued on next page

Additional Capacity

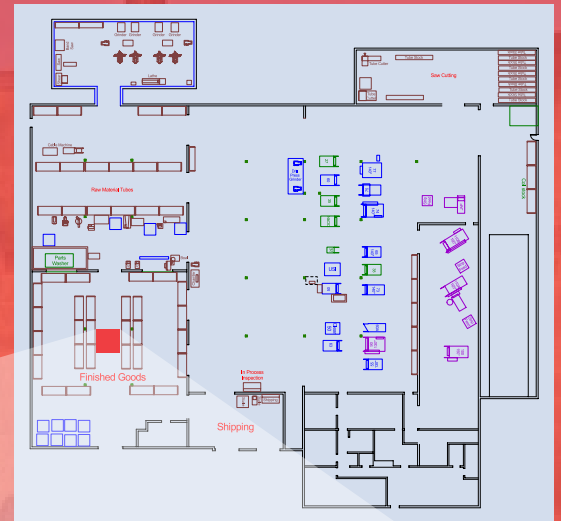
- 14,000 square feet under roof;
18,000 square feet asphalted
storage space



Continued on next page

Warehousing

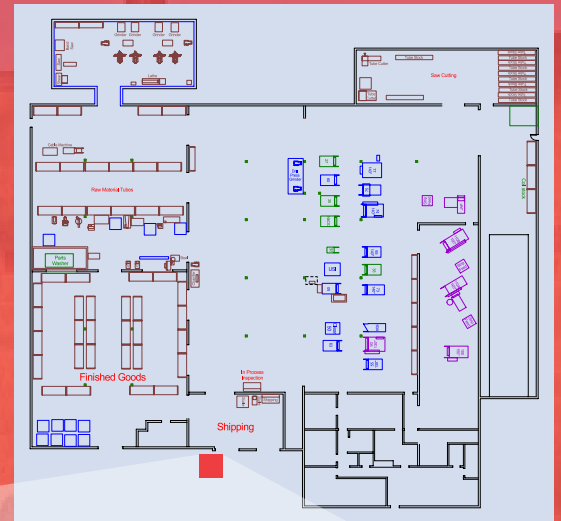
- Stock, kanban, make-to-order, shortest lead times.



Continued on next page

Shipping as Requested

- You specify freight mode, packaging, labelling, poly-bagging, clam shell, bulk!
- 4 docks at your service.
- Drive-in 40-foot, drive-in step van, 2 recessed access docks.

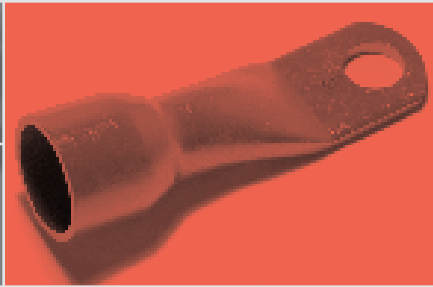


Continued on next page



Asked... Answered.

Virtual Plant Tour



**ASK invites you to visit, any time,
less than one hour from both Chicago airports.
We look forward to seeing you!**

