



D A T A S H E E T

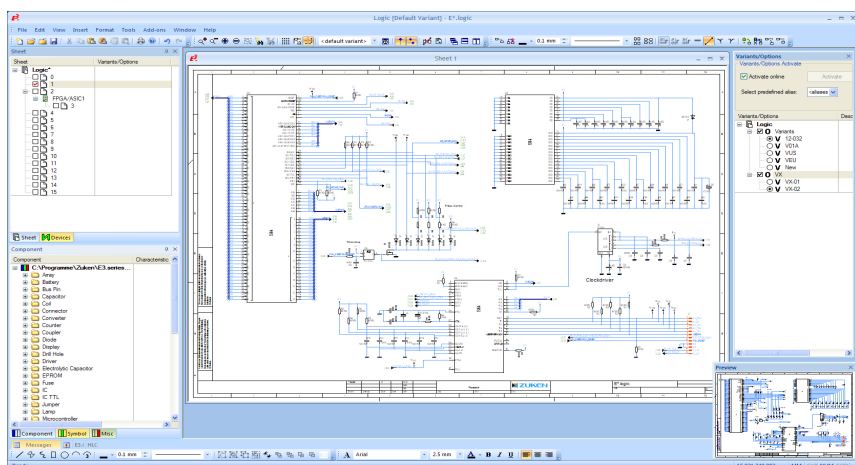
# Schematic System for Designing Circuit Boards E<sup>3</sup>.logic

## Introduction

E<sup>3</sup>.logic is a complete and open CAD solution for the creation of circuit diagrams used in electronic design. E<sup>3</sup>.logic permits parallel development by different design teams.

E<sup>3</sup>.logic is based on a common component and symbol database, which ensures the consistent display of circuit diagrams throughout a product's entire lifecycle.

E<sup>3</sup>.logic can be used as an integrated frontend system for Zuken's Desktop PCB solution CADSTAR – from schematics up to testing. At the press of a button E<sup>3</sup>.logic designs can be re-used as functional blocks in E<sup>3</sup>.cable for system documentation, thereby all relevant connector data, signals and attributes are automatically transferred.



E<sup>3</sup>.logic – Schematics for electronic design, modular layout





## Special Functionality in E<sup>3</sup>.logic

- Hierarchical design – nesting to any depth
- Re-use of standard modules in schematics and PCB layout
- Busses and bus pins
- Supports supply nets
- FPGA Integration
- Placement variants
- Define net route codes, net classes and spacing classes
- Specifications for test points
- Forward/backward annotation with CADSTAR PCB
- Crossprobing with CADSTAR PCB

## The E<sup>3</sup>.series Standard

- Completely integrated in Windows® environment
- User-interface in numerous languages; easy to switch
- Supports all Windows® fonts using UNICODE
- Configurable user interface and toolbars
- Object-oriented user interface with possibility to directly integrate in other applications
- Display drawings using different norms (DIN, ANSI, JIC)
- Supports any sheet format, e.g. DIN, Ladder, special formats
- Translate texts into any language
- Search mechanisms for symbols, devices, connections, texts and attributes...
- Context-sensitive Online Help
- 256 object-related display levels
- Print and plot using all Windows® standard drivers
- Supports standard formats like STEP, DXF/DWG, SVG, PDF, pixel graphics
- Bidirectional API (COM/DCOM Standard)
- Integrated database editor
- Compatible with all previous E<sup>3</sup>.series versions

## The E<sup>3</sup>.series Base Functionality

- Automatic and parallel connections
- Save, load, copy, rotate and mirror drawings and areas
- Extensive functionality for exchanging symbols and components
- Continuous verification of adherence to manufacturing specifications, such as multiple assignment of symbols and overcrowding of components
- Supports variants and options, Boolean operators and alias names
- Online cross-references for connections and devices
- Object and text hyperlinks also within E<sup>3</sup>.series projects
- User-defined connection attributes
- User-defined grid sizes, fonts and line types
- Drag and Drop
- Dynamic zooming and panning

## Additional E<sup>3</sup>.series Modules

### E<sup>3</sup>.schematic

E<sup>3</sup>.schematic is the E<sup>3</sup>.series base module. Easy to use and operate. Provides complete functionality for electrical design, including inline terminals and connection plans.

### E<sup>3</sup>.fluid

E<sup>3</sup>.fluid is the integrated design system for hydraulics, pneumatics, cooling and lubrication. Special functionality supports the development of fluidics in connection with electrical design.

### E<sup>3</sup>.cable

E<sup>3</sup>.cable offers enhanced functionality for designing cables and cable harnesses. Different views of the design enable specific documents to be created for production, start up and service.

### E<sup>3</sup>.panel

E<sup>3</sup>.panel is the module for panel layout and wiring. Optionally design the panel in 2D or 3D, place all devices and automatically connection wire pathways as specified.

### E<sup>3</sup>.formboard

E<sup>3</sup>.formboard – the module used to create 1:1 nailboard drawings for manufacturing cable harnesses. Quickly and easily place views, define the cable harness structure as well as specify the mounting and cable protection.

### E<sup>3</sup>.view

E<sup>3</sup>.view is the free-of-charge viewer for all E<sup>3</sup>.series projects (.e3s) and special viewer files (.e3v). It can be used by anyone within a company or passed on to suppliers and customers.

