

SINGER MODEL 106/206-HC

Hydraulic Check Valve

Schematic A-0422D (Sizes: 2" to 16" 106, 4" to 36" 206)
Installation, Operating & Maintenance Instructions

DESCRIPTION:

This valve is designed to open for normal direction of flow, and close to prevent reverse flow. Opening and closing speeds are individually adjustable to prevent surges.

The maximum working pressure rating is limited by the selection of pilot system components. Standard production valves are limited to 200 psi for ANSI 150 flanged and ANSI 300 screwed bodies. ANSI 300 flanged valves are rated to 300 psi. Consult the factory for applications requiring higher pressures.

DESCRIPTION OF OPERATION:

Refer to 106/206-PG 'Operation'. The two check valves in the pilot circuit cause the opening and closing flows to go through separate needle valves. The needle valves are used to adjust opening and closing speeds.

INSTALLATION:

1. See 106/206-PG 'Installation'.
2. This valve **MUST** be installed in a horizontal pipe with the bonnet up.

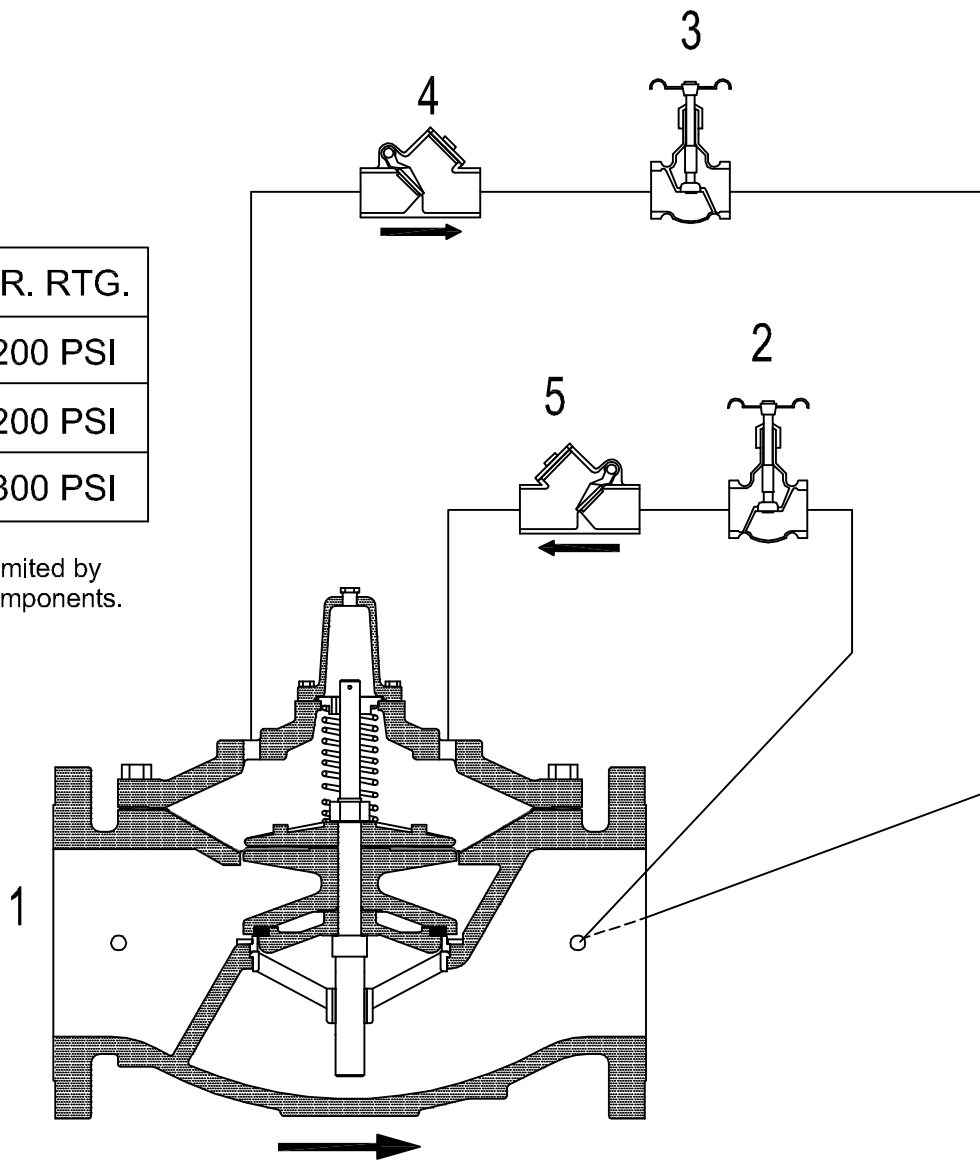
ADJUSTMENT:

Turn Speed Controls clockwise for reduced speed, counter-clockwise for increased speed. Do not close either Speed Control tight or it will prevent the valve from operating.

Pressure Rating * :

TYPE	PR. RTG.
300 SCR.	200 PSI
150 FLG.	200 PSI
300 FLG.	300 PSI

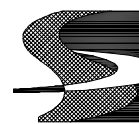
* Pressure ratings are limited by the choice of pilot components.



1. Main Valve - Model 106/206-PG (Flow Over the Bridge).
2. Closing Speed Control.
Up to 4" 106: 3/8", 6" -10" 106: 1/2", 12"-24" 106: 1"
Up to 6" 206: 3/8", 8" -12" 206: 1/2", 16"-36" 206: 1"
3. Opening Speed Control.
Up to 6" 106: 3/8", 8"-24" 106: 1/2"
Up to 8" 206: 3/8", 10"-36" 206: 1/2"
4. Swing Check Valve.
Up to 6" 106 150F: 3/8", 6" 106 300F: 1/2", 8"-24" 106: 1/2"
Up to 8" 206 150F: 3/8", 8" 206 300F: 1/2", 10"-36" 206: 1/2"
5. Swing Check Valve.
Up to 4" 106 150F: 3/8", 4" 106 300F: 1/2", 6" -10" 106: 1/2", 12"-24" 106: 1"
Up to 6" 206 150F: 3/8", 6" 206 300F: 1/2", 8" -12" 206: 1/2", 16"-36" 206: 1"

Hydraulic Check Valve with
Opening and Closing Speed Controls.

THIS VALVE MUST BE INSTALLED
IN A HORIZONTAL PIPE WITH
BONNET UP UNLESS OTHERWISE
ORDERED.



SINGER VALVE

Result-Based Solutions. Globally.™

www.singervalve.com 12850-87th Avenue. Surrey, B.C. V3W 3H9

Drawn By:

Scott Grover

Approved By:

Kari Okasanen

Date:

June 1, 2006

Drawing:

A-0422D

Model 106 or 206-HC