

Profile

# Design issues



**MEZZANINE ARCHITECTS**

Dublin St, Ballyjamesduff, Co Cavan. Tel: 049 854 5861  
 Palace St, Drogheda, Co Louth, Tel: 041 981 9902  
 Email: mezzanine.architects@gmail.com

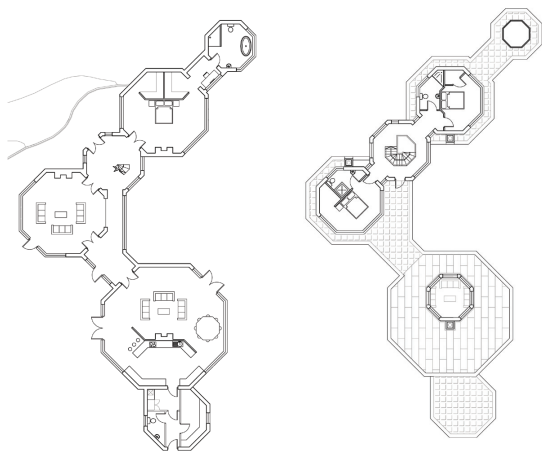


In this edition architect, Brian Mulvey questions standard construction methods and looks at a more efficient alternative that is an interesting and fast form of construction.

## Design focus



This month's featured design from 'The Home Concepts UK edition is another unique design by Brian Mulvey. The book is priced €25 from all good book stores.



Above, ground floor and first floor plans



**Q.** I've been looking at different construction methods to build my home, I'm not pushed on timber frame. Have you come across any new methods that interest you?

**Padraig McEntee, Virginia**

**A.** Interestingly enough, the design on this page is being constructed with a relatively new method of construction to this country. The client like yourself prefers concrete build. Because of the large openings and many angles involved we looked at a system called 'KORE ICF' (Insulated concrete formwork).

Investigating a product is always interesting. The Internet makes this so much easier. What is amazing, sometimes, is when you find a product that is being made locally through the Net.

The Kore System is designed and manufactured by Airpacks Ltd in Kilnaleck, Cavan. The company has over 40 years experience in the manufacture of expanded polystyrene for the construction industry.

After satisfying myself that the KORE ICF works I went to visit Airpacks to further discuss the product, its assembly and its advantages for our project.