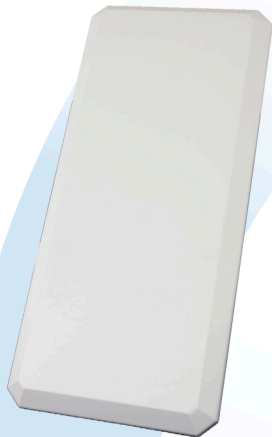


Circular Polarity RFID Panel Antenna

PRL90209



902-928 MHz 9 dBiC CIRCULAR POLARITY PANEL

The Laird Technologies' PRL90209 antenna is a circularly polarized panel antenna that provides reception and transmission of signals in the 902-928 MHz frequency band. Laird Technologies' industry-renowned design methodology achieves maximum efficiency and performance across the entire frequency band.

Both VSWR and axial ratios are excellent and allow the user to achieve the maximum performance for an antenna of this type. The antenna is housed in a heavy duty radome enclosure that can be directly wall mounted. The antenna is offered with an integrated fixed connector with a variety of connector types.

FEATURES

- Low profile
- Extremely low VSWR and axial ratio
- Weather and UV resistant radome
- Wide range of connector options
- Left hand and right hand CP versions
- IP67 Enclosure

APPLICATIONS

- Warehouse
- Distribution center
- Airports and hospitals
- Transit terminals
- Conveyor belt

Circular Polarity RFID Panel Antenna

PRL90209

SPECIFICATIONS

Antenna Part Number	PRL90209
Frequency Range	902 - 928 MHz
Gain	9 dBic
Maxium VSWR	1.4:1
3 dB Beamwidth - Azimuth	70°
Front to Back Ratio	20 dB
Isolation	-37 dB
Polarization	1 Circular Right and 1 Circular Left
Maxium Input Power	10 Watts
Input Impedence	50 Ohms
Axial Ratio	1dB Typical
Weight (Kg)	4.2 lbs (1.9 kg)
Mechanical Size	259 mm x 575 mm x 33.5 mm
Antenna Connection	Fixed, Type N Female, 2x or configurable
Radome	ASA, UV Stable
Mount Style	Threaded Stud, 4x
Temperature Operational	-25°C to +70°C
Lightning Protection	DC Grounded
Environmental Rating	IP 67

SYSTEM ORDERING

PRL90209-FNF Circular Polarity RFID Panel Antenna Fixed, N female