

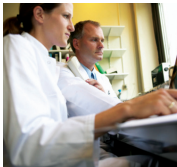
HARNESS THE POWER OF THE CLOUD



A first-in-class solution for clinical trials. Real-time business intelligence driving real-time trial decisions.

DATAFLOW MANAGER

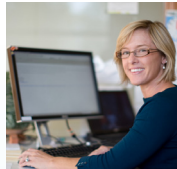
A PROTOCOL-INTELLIGENT SOLUTION



In Dataflow Manager, PharmaPros has developed the industry’s first protocol-intelligent solution for managing clinical trials. As its name suggests, it helps life sciences companies manage the flow of data from all of its sources, and to leverage these diverse streams of data into actionable information. With the increasing diversity of data capture systems being deployed across clinical trials, a central view of trial intelligence is critical to maintaining control. Dataflow Manager is interoperable with any eClinical technology, and can dynamically look across these systems to provide a continuous real-time view of data progress.

Dataflow Manager is interoperable with any eClinical technology

Automated Information Sharing



By eliminating the manual processes of managing multiple systems and spreadsheets, Dataflow Manager enables study teams to focus more proactively on progressing the trial. It’s ability to rapidly investigate trial data, and present it back to the user in a rich visual format provides a platform for information sharing that increases automation and repeatability across trials. With dynamic dashboards and reporting screens, including data analytics on trial milestones, cycle times are decreased and trial reporting is streamlined. Study teams have the information they need, when they need it.

Empower trial stakeholders with the actionable information they need to orchestrate trial operations.

A Cloud-Based Solution



Dataflow Manager is a cloud-based solution that can be deployed in weeks and scale from a single study to an enterprise. Leveraging a true Software-as-a-Service (SaaS) model, Dataflow Manager includes hands on support and enhancements. The application is accessible from any web-browser, and can be rapidly deployed on both new and ongoing trials.

CORE CAPABILITIES

Dataflow Manager’s core capabilities provide a rich interface to view, track, and report on trial information. Its sophisticated trial analytics and data tracking are unmatched in the industry.

Study Startup & Planning

- Timeline and milestone planning with automated milestone tracking
- Create subject disposition groups to track
- Subject enrollment tracking

Data Tracking & Analytics

- Integrated source data tracking against protocol-defined expectation
- Comprehensive data accounting across systems
- Rapid identification of missing data
- Patient profiles with clinical and operational data

Metrics Portal

- Dashboards with drill down on key performance indicators
- Rich visualizations of metrics, projections, and trending
- Program & Study level forecasting and reporting

Real-Time Operational Reporting

- Portfolio & Study level reporting

- Country & Site level Details
- Discrepancy trending by form

ADDITIONAL CAPABILITIES

Dataflow Manager includes a robust set of trial management capabilities that are available through add-on modules. Customers can extend their capabilities as needed to support Site Management, Document Management, and Financial Management.

Site Management

- Global site directory / contacts
- Activation & recruitment tracking
- Patient visit tracking
- Investigator progress tracking
- Dynamic trip scheduler & other CRA Tools

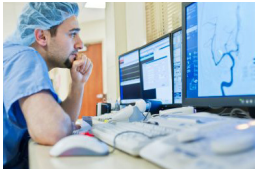
Document Management

- Regulatory / essential document tracking
- eTMF Repository
- Drag & drop upload & centralized viewing

Budget Management

- Global budget tracking by CRO, site, vendor, study
- Milestone payment tracking
- Clinical research grant management
- Automation of research grant invoices for site approval

DATAFLOW MANAGER IS INTEROPERABLE WITH ANY eCLINICAL TECHNOLOGY, AND CAN DYNAMICALLY LOOKS ACROSS THESE SYSTEMS TO PROVIDE A CONTINUOUS REAL-TIME VIEW OF TRIAL PROGRESS.



For more information,
please contact us at
617.871.2500 or
info@PharmaPros.com

One Product, Multiple Solutions



Dataflow Manager provides a powerful set of capabilities that can be targeted to help solve a variety of different challenges facing trials sponsors, CROs, and technology vendors. By providing flexible implementation options, our customers are able to design best-fit solutions for a single trial, or across their research portfolios. At PharmaPros, our philosophy has been that once the data intelligence is at their fingertips, our customers will continue to define and innovate solutions that become a part of our product offerings.

PharmaPros: A different type of Software Company



We understand the challenges in managing clinical trials in today's complex landscape. Our team has walked in the shoes of our clients - managing trials, managing data, and managing technology. This direct experience has enabled us to build solutions that improve the process of managing clinical trials. With an emphasis on collaboration, we engage with clients through our SaaS solutions. You're not just gaining the benefits of our technology—**you're gaining the expertise of our team.**



DATAFLOW MANAGER, WINNER OF THE
2010 DATA DRIVEN INNOVATION AWARD

10 Fawcett Street
Cambridge MA, 02138

Phone: 617.871.2500
Fax: 617.497.0545

info@pharmapros.com
www.pharmapros.com

