



.....*Making Sense of Measurement*

CheckMate Newsletter

- In This Issue**
- [SCANNING OFFER SOLVE DIMENSIONAL ISSUES WITH LAUNCHRITE](#)
 - [CHECKMATE 12.1 ANNOUNCEMENT](#)
 - [CHECKMATE AFTER CLASS](#)
 - [CHECKMATE CHALLENGE](#)
 - [TECH TIP](#)
 - [UPGRADING TO WINDOWS 7](#)
 - [REMINDER OF CONTACT INFO CHANGES](#)

Issue: Summer August/ 2011

Dear Janet,

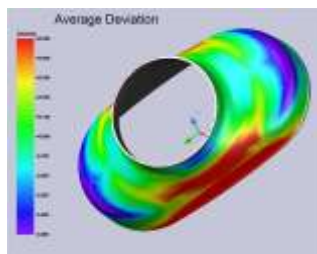
We hope you are enjoying your summer so far. Here at Origin, we have been working hard at getting your new CheckMate 12.1 release to you in spite of the postal strike here in Canada. Now that it is over, things are back to normal. We hope you like the new release and welcome any feedback/comments.

SCANNING OFFER FOR NEW & EXISTING CUSTOMERS

SCANNING (Point Cloud Metrology)

We are offering a "Scanning Special" **till Oct 31, 2011**

Cloud Data Metrology provides robust metrology functionality of both single and multiple part studies (SPC) for two distinct disciplines.



1. Cloud data to CAD compare with color gradient mapping.
2. Inspection Reporting.

Lets clarify what cloud data is. To CheckMate Cloud Data is defined as data typically collected from scanning in either of two formats:

1. Point data XYZ and optionally a vector
2. STL data (stereo lithography)

For information on the Aerospace Application - [Click Here](#)

SPECIAL LIMITED TIME OFFER

Add scanning to an existing reporting seat for Half Price at \$4000

Or

Purchase a new Reporting Seat and the scanning option is free an \$8000 saving

Take advantage of this great offer before October 31, 2011.

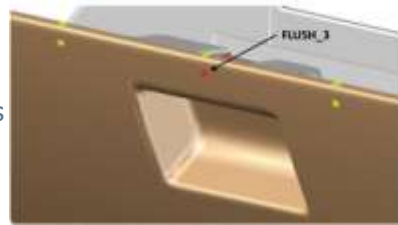
To watch a video - [Click Here](#) (for customers with BBS login only).

For more information, call 1-800-269-2509

SOLVE DIMENSIONAL ISSUES WITH LAUNCHRITE

ASSEMBLY ISSUES

During the final product development stage leading up to the launch of a glove box assembly, Origin's customer ran into severe flush and gap issues, which prevented them from achieving buy-off and ultimately halted production. It is not unusual to face dimensional issues, often referred to as windage, during the launch of a new plastic part. Perplexing for the customer's engineers, in this particular case, was that each part of the assembly had already passed dimensional inspection. What was it about the assembly process that was causing the final assembly to fail? [Read More....](#)



CHECKMATE 12.1 / 64Bit ANNOUNCEMENT

CheckMate - 64 Bit



The new CheckMate release called "12.1", has been shipped. If you have not received the DVD, please contact support@originintl.com It is 64 bit and Windows 7 compliant.

Future Hardware Requirements for CheckMate:

- 64 bit capability - able to run Windows XP, Vista or Windows 7
- Minimum 4 gigabytes of RAM
- Ability to do Windows XP hardware simulation
- Multiple Cores - Scanning software uses multiple cores to increase the performance

For customers who log in to our BBS. We have a new folder called CheckMate 12.1 for this new release and other

information related to it.

CHECKMATE AFTER CLASS



Origin International provides webinars for CheckMate customers with an annual support plan. These webinars cover applications, procedures, advance commands that time does not allow in a standard training class.

These Webinar sessions are online training sessions that you can either: 1) register to view live or 2) download and view at your convenience.

If you missed the after class webinar [Click Here](#) to Download and click on Webinars on the left to view at your own convenience.

UPCOMING WEBINARS:

Handy CheckMate/CAD Commands

Will be reviewing various CheckMate and MDT commands to aid in the surfacing process. Some scenarios include CAD files with missing surfaces, making surfaces using filtered scan data and other handy commands and applications.

Date: Thursday Aug. 25th - 11am to Noon(EST)- [click here](#)

Once the host approves your request, you will receive a confirmation email with instructions for joining the meeting.

THE CHECKMATE CHALLENGE

Tell Us Your Story

We are increasingly seeing dimensional metrology data, made more available and being generated more often on the shop floor in more innovative methods, partly due to the implementation of new technologies.



This is leaving us here, at Origin, musing over the idea of seeing CheckMate reports being downloaded to tablets on the shop floor, upload or incorporate additional data such as "key-in" information from hand checks or data from other operations, and for review in corporate offices and meeting rooms.

If there is a CheckMate user out there who has implemented, or does so in the near future, such a process and willing to share their story with us, they could be the winner of a new ipad or tablet equivalent.

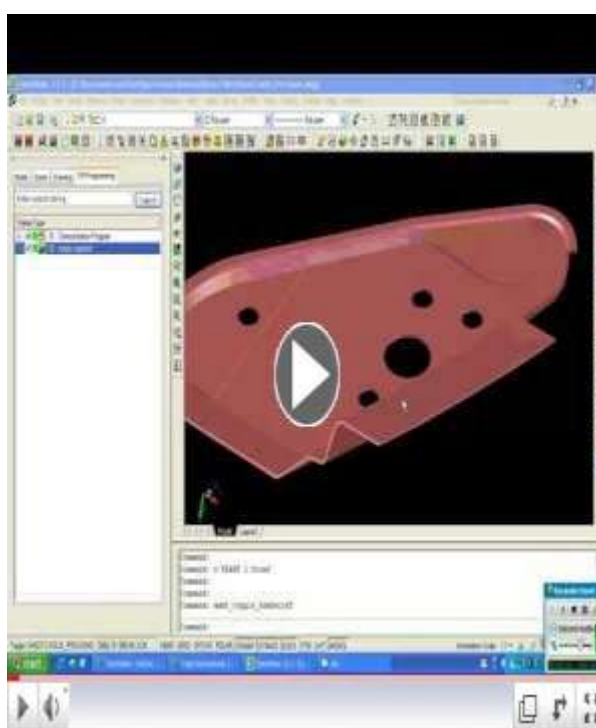
Please contact us at sales@originintl.com with your story and for more details on how to qualify.

Did you Know...

Cecil..Our CheckMate expert says...

CheckMate Surface Measurement

We are doing this a little different. Click on the YouTube video [link](#) and watch Cecil in action as he shows how to create a CheckMate surface measurement in the center of a hole.



ORIGIN_INT-CheckMate_TechTip_072211

UPGRADING TO VISTA OR WINDOWS 7

Take Note of the Following:



- The new CheckMate release 12.1 supports both 32 bit and 64 bit.
- We recommend Windows 7 - 64 bit.
- You must have "Administrator" rights
- Change your "Shortcuts" to run as administrator

[Click Here](#) for the application note with more details

(requires a login to our BBS)

REMINDER OF CONTACT INFORMATION CHANGES

A friendly reminder to update your records...

Our Website address has changed to:

www.originintl.com

Our email addresses have changed to:

sales@originintl.com
support@originintl.com

Please update your records. Thank you.

Origin International Inc. is focused on providing software solutions and consulting services to world class manufacturers, their suppliers and industry leading metrology solutions providers.

Manufacturers that choose Origin software solutions are industry leaders in innovation, quality and cost effectiveness within the Automotive, Aerospace, Transportation and Consumer Products industries.

If you would like more information, don't hesitate to contact us at 1-800-269-2509.

Sincerely,

Janet Wiaderny
Origin International Inc.
sales@originintl.com
support@originintl.com

[Forward email](#)

 [SafeUnsubscribe](#)



This email was sent to janet.wiaderny@originintl.com by janet.wiaderny@originintl.com | [Update Profile/Email Address](#) | Instant removal with [SafeUnsubscribe](#) | [Privacy Policy](#).
Origin International Inc. | 72 Baynards Lane | Richmond Hill | Ontario | L4C9B8 | Canada