

## CheckMate Newsletter

<b>In This Issue</b>
<a href="#">SCANNING OFFER- expires Oct 31</a>
<a href="#">CHECKMATE AFTER CLASS-Oct.27th</a>
<a href="#">CHECKMATE CHALLENGE</a>
<a href="#">TECH TIP-Tabs Dont Appear</a>
<a href="#">CHECKMATE 12.1-Phase II 203 Update</a>
<a href="#">UPGRADING TO WINDOWS 7</a>
<a href="#">REMINDER OF CONTACT INFO CHANGES</a>

**Quick Links**  
[Register Now For Upcoming Webinar More On Us](#)

**Join Our List**  
[Join Our Mailing List!](#)

**Issue: Fall** **October/ 2011**

**Dear Janet,**

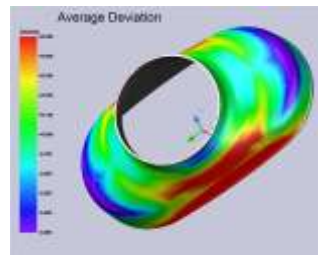
Well here we are into the fall season already. We hope you had a good summer. Just a reminder about our Scanning offer mentioned below which expires October 31, 2011. Take the time now to speak with one of our Point Cloud specialists to see if this is something you should participate in.

### SCANNING OFFER FOR NEW & EXISTING CUSTOMERS

#### SCANNING (Point Cloud Metrology)

We are offering a "Scanning Special" ***till Oct 31, 2011***

Cloud Data Metrology provides robust metrology functionality of both single and multiple part studies (SPC) for two distinct disciplines.



1. Cloud data to CAD compare with color gradient mapping.
2. Inspection Reporting.

Lets clarify what cloud data is. To CheckMate Cloud Data is defined as data typically collected from scanning in either of two formats:

1. Point data XYZ and optionally a vector
2. STL data (stereo lithography)

For information on the Aerospace Application - [Click Here](#)

#### SPECIAL LIMITED TIME OFFER

Add scanning to an existing CheckMate Reporting seat for Half Price at \$4000

Or

Purchase a Reporting Seat and the scanning option is free an \$8000 saving

Take advantage of this great offer *before October 31, 2011.*

To watch a video -[Click Here](#) (for customers with BBS login only).

For more information, call 1-800-269-2509

### CHECKMATE AFTER CLASS



Origin International provides webinars for CheckMate customers with an annual support plan. These webinars cover applications, procedures, advance commands that time does not allow in a standard training class.

These Webinar sessions are online training sessions that you can either: 1) register to view live or 2) download and view at your convenience.

If you missed the after class webinar [Click Here](#) to Download and click on Webinars on the left to view at your own convenience.

#### **UPCOMING WEBINARS:**

##### **Probe Moves and Rotates**

This webinar will be detailing all of the commands under the Probe Menu and review the known and not-so-known procedures for generating and manipulating probe moves and rotations.

**Date:** Thursday Oct. 27th - 11am to Noon(EST)- [Click Here](#)

Once the host approves your request, you will receive a confirmation email with instructions for joining the meeting.

### THE CHECKMATE CHALLENGE

#### Tell Us Your Story

We are increasingly seeing dimensional metrology data, made more available and being generated more often on the shop floor in more innovative methods, partly due to the implementation of new technologies.

This is leaving us here, at Origin, musing over the idea of seeing CheckMate reports being downloaded to tablets on the shop floor, upload or incorporate additional data



such as "key-in" information from hand checks or data from other operations, and for review in corporate offices and meeting rooms.

If there is a CheckMate user out there who has implemented, or does so in the near future, such a process and willing to share their story with us, they could be the winner of a new ipad or tablet equivalent.

Please contact us at [sales@originintl.com](mailto:sales@originintl.com) with your story and for more details on how to qualify.

#### Did you Know...

#### Cecil..Our CheckMate expert says...

##### Edit Feature Screen-Tabs don't appear

We are doing this a little different. Click on the YouTube video [link](#) and watch Cecil in action as he shows how he installed CheckMate 12.1 into Windows 7 and the tabs don't appear on the Edit Feature Screen.



ORIGIN\_INT-CheckMate\_TechTip  
080111.wmv

#### CHECKMATE 12.1

#### CheckMate - 12.1-Phase II 203 Update




For customers who log in to our BBS. We have a new folder called CheckMate 12.1 for this new release and other information related to it. ie. updates, how to unblock the help file etc.

Hardware Requirements for CheckMate:

- 32 bit/64 bit capability - able to run Windows XP, Vista or Windows 7
- Minimum 4 gigabytes of RAM
- Ability to do Windows XP hardware simulation
- Multiple Cores - Scanning software uses multiple cores to increase the performance

#### UPGRADING TO VISTA OR WINDOWS 7

##### Take Note of the Following:

- The new CheckMate release 12.1 supports  both 32 bit and 64 bit.
- We recommend Windows 7 - 64 bit.
- You must have "Administrator" rights
- Change your "Shortcuts" to run as administrator

[Click Here](#) for the application note with more details

*(requires a login to our BBS)*

#### REMINDER OF CONTACT INFORMATION CHANGES

##### A friendly reminder to update your records...

Our Website address has changed to:

[www.originintl.com](http://www.originintl.com)

Our email addresses have changed to:

[sales@originintl.com](mailto:sales@originintl.com)  
[support@originintl.com](mailto:support@originintl.com)

Please update your records. Thank you.

Origin International Inc. is focused on providing software solutions and consulting services to world class manufacturers, their suppliers and industry leading metrology solutions providers.

Manufacturers that choose Origin software solutions are industry leaders in innovation, quality and cost effectiveness within the Automotive, Aerospace, Transportation and Consumer Products industries.

If you would like more information, don't hesitate to contact us at 1-800-269-2509.

**Sincerely,**

Janet Wiaderny  
Origin International Inc.  
[sales@originintl.com](mailto:sales@originintl.com)  
[support@originintl.com](mailto:support@originintl.com)

[Forward email](#)



This email was sent to janet.wiaderny@originintl.com by [janet.wiaderny@originintl.com](mailto:janet.wiaderny@originintl.com) | [Update Profile/Email Address](#) | Instant removal with [SafeUnsubscribe](#)  | [Privacy Policy](#).  
Origin International Inc. | 72 Baynards Lane | Richmond Hill | Ontario | L4C9B8 | Canada