

Origin

MAKING SENSE OF MEASUREMENT



NEWSLETTER - AUGUST 2010



NEWSLETTER TOPICS

- Origin's After Class Webinars
- Scanning...What's Coming
- CheckMate with Vista & Windows 7

To print this newsletter: [Click Here](#) and click on a month on the left side to download the PDF version.

Please do NOT reply to this email.

To **Unsubscribe** to this newsletter [Click Here](#)

AFTER CLASS WEBINARS...

Origin International provides webinars for CheckMate customers with an annual support plan. These webinars cover applications, procedures, advance commands that time does not allow in a standard training class.

These Webinar sessions are online training sessions that you can either: 1) register to view live or 2) download and view at your convenience.

1) **To Register:** Click on a topic link below . Once you are registered, information on joining the meeting will be emailed to you. On the registration form, enter your information and then select "Submit".

2) If you missed the after class webinar [Click Here to Download](#) and click on **Webinars** on the left to view at your own convenience

Host: Cecil Deline

August 26th :

["Loading Scan Data and Reporting It Part One Basics"](#)

This webinar will review the new functions related to Loading and aligning scan data. Included will be the reporting basics using color temperature plots.

September 30th :

["Loading Scan Data and Reporting It Part Two Advanced"](#)

This webinar will review the new functions related to Loading and aligning scan data. Included will be the reporting using layouts, spc, color temperature legends and executing virtual cmm program execution.

"We welcome your ideas for new webinar topics"

SCANNING...What's Coming

CheckMate has long been known for its interoperability, advanced GD&T handling and dimensional metrology data exchange capabilities is preparing to release modules for scanning technologies.

With the proliferation of scanning equipment for metrology applications the demand to assemble and evaluate data from multiple measurement sources including;

- Coordinate Measuring Machines
- Articulating arms
- Laser Trackers
- Theodolites
- Digital Devices and hand tools

has manufacturing engineers scrambling for common tools in order to keep up and provide a uniform approach to all their dimensional requirements.

In keeping with our "making sense of measurement" approach to dimensional metrology Origin will be delivering new products to our CheckMate platform for point cloud processing in addition to our current capabilities for the more traditional technologies.

These new products will include the ability to align point clouds to a CAD model and produce color deviation (thermal) maps and soft gauging functionality for full GD&T evaluation. They will also be integrated into CheckMate for inspection and process improvement applications where SPC and multiple part studies are required.

CHECKMATE - Vista & Windows 7

If you are thinking of changing to Vista or Windows 7, take note of the following requirements:

Install as Windows 7 - 32 bit system

MDT2008 use a 32 bit version

Must have "Administrator" rights

Change your "Shortcuts" to run as administrator

[Click Here](#) for the application note with more details.

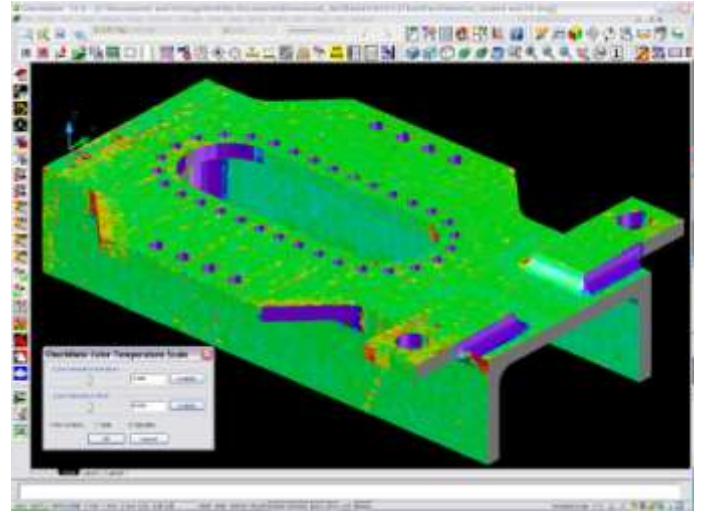
Contact Sales

1.800.269.2509

Email: sales@origin.com

Fax: 416-410-8313

SCANNING



Contact Support

1 800.420.7361

(Software Support Only)

Email: support@origin.com