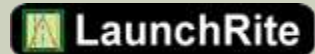


Origin

MAKING SENSE OF MEASUREMENT



NEWSLETTER - SEPTEMBER 2010



NEWSLETTER TOPICS

- Origin's After Class Webinars
- Scanning Update
- CheckMate with Vista & Windows 7
- CheckMate Future Hardware Requirements
- TransMagic Special Offer
- Tech Tip-Alignments

To print this newsletter: [Click Here](#) and click on a month on the left side to download the PDF version.

Please do NOT reply to this email.

To **Unsubscribe** to this newsletter [Click Here](#)

***SME Speaking Engagement –CANCELLED**

AFTER CLASS WEBINARS...

Origin International provides webinars for CheckMate customers with an annual support plan. These webinars cover applications, procedures, advance commands that time does not allow in a standard training class.

These Webinar sessions are online training sessions that you can either: 1) register to view live or 2) download and view at your convenience.

1) **To Register:** Click on a topic link below . Once you are registered, information on joining the meeting will be emailed to you. On the registration form, enter your information and then select "Submit".

2) If you missed the after class webinar [Click Here to Download](#) and click on **Webinars** on the left to view at your own convenience

Host: Cecil Deline

September 30th :

[“Loading Scan Data and Reporting It Part Two Advanced”](#)

This webinar will review the new functions related to the basics of loading and aligning scan data to the CAD model. Included will be examples of different orientation scenarios.

“We welcome your ideas for new webinar topics”

SCANNING UPDATE

As new CheckMate products for point cloud processing of laser scanning data near completion, we are very encouraged by the positive feedback we have received on both the overall functionality and the performance of the product. With the integration of these capabilities into CheckMate coming, we will continue to update you on the functionality and a timeline for their release.

Some of the features of the software are:

- 1) Load scanned measurement data from STL and point cloud files
- 2) Auto-align to a CAD model
- 3) Create temperature color plots for
 - a. Deviation, single and multiple part (average) plots
 - b. 6 sigma spread
 - c. Range
 - d. Cp
 - e. Cpk
- 4) Extract Features from the scanned data.
- 5) Create constructions of
 - a. Basic geometry features
 - b. Datums and Datum reference frames
 - c. Co-ordinate systems
- 6) Evaluations of GD&T callouts
- 7) Work with our standard Root Cause browser and reporting browsers
- 8) Produce PPAP and Capability reports.

UPGRADING to Vista or Windows 7

take note of the following requirements:

- Install as Windows 7 - 32 bit system
- MDT2008 use a 32 bit version
- Must have "Administrator" rights
- Change your "Shortcuts" to run as administrator

[Click Here](#) for the application note with more details.

Future Hardware Requirements for CheckMate:

- 64 bit capability - able to run Windows XP, Vista or Windows 7
- Minimum 4 gigabytes of RAM
- Ability to do Windows XP hardware simulation
- Multiple Cores – Scanning software uses multiple cores to increase the performance

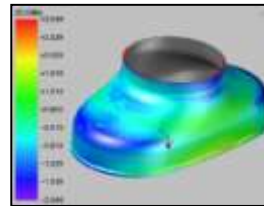


Figure 3-Deviation

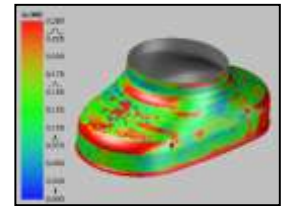


Figure 3-6 Sigma

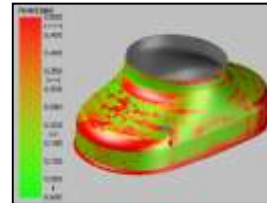


Figure 3-Range

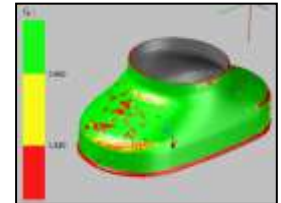


Figure 4-Cp

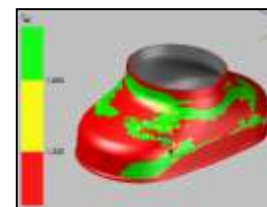


Figure 5-Cpk

TECH TIP

For those of you who have forgotten, or want to refresh yourselves on, how to program manual and DCC alignments in CheckMate, just download the Webex movie, [CM10 Alignments](#), from the Origin BBS, in Area 11-Webex Presentations. Although it is titled CM10, the same procedure still applies to CheckMate 12.

TRANSMAGIC PROMOTIONS

TransMagic Current Promotions

Upgrade to EXPERT for \$2995 USD
(Available in 32-bit or 64-bit versions)

Offer valid until September 30, 2010!

Contact Sales
1.800.269.2509
Email: sales@origin.com
Fax: 416-410-8313

Contact Support
1 800.420.7361
(Software Support Only)
Email: support@origin.com

