

Having trouble viewing this email? [Click here](#)

To be compliant with Canada's new email marketing laws coming into effect July 1st, please click the link to confirm your subscription. [Click here](#)

You may [unsubscribe](#) if you no longer wish to receive our emails.



.....*Making Sense of Measurement*

OriginIntl.com

In This Issue

- [IMTS 2014: Origin Presentation](#)
- [Burton Precision Tech Centre Webinar Link has Changed](#)
- [CheckMate After Class...](#)
- [Tech Tips-get rid of shadows](#)
- [Origin's Newest Videos](#)
- [On-line training now available...](#)
- [Hot Links to SOLIDWORKS](#)
- [CM12.1 XP End of Life Notice](#)
- [CheckMate Updates... I.E. 10 Issues...](#)
- [Upgrading to WIN 7...](#)
- [Important Notice MDT Reseller/Distributor Oppty...](#)
- [Rate this Newsletter](#)

ISSUE: FALL

OCT 2014

Dear Janet,

Well, it's official! Origin is now a SOLIDWORKS® Solution Partner. In light of this, Origin is offering a discount on CheckMate for SOLIDWORKS®. Past and present customers should be receiving an email shortly of all the details. Of course you can always contact us at sales@originintl.com for more information.

The IMTS 2014 show was a great success. For those of you that could not attend, we have a treat for you. Check out the Hilite Section on the left side of this newsletter for a video of the first ever **3D car being printed and driven**.

We appreciate your comments and feedback.

HILITE

IMTS 2014

3D CAR

BEING PRINTED

BEING DRIVEN!

Check it out

QIF Presentation at IMTS 2014

QIF - Are you ready?

QIF is the Quality Information Framework, a suite of XML based data models that contain everything from model definitions with associated GD&T, inspection plans, inspection results, to multi-part statistics in a common QIF document format. The new QIF 2.0 standard has been approved by the Dimensional Metrology Standards Consortium (DMSC) for progression to an ANSI standard and will be out for public review this fall.

See Origin's presentation on QIF at the IMTS Show.



Origin International QIF Presentation - IMTS 2014

IN THE NEWS

[OriginIntl.com](#)

New ** CheckMate for SOLIDWORKS®

New ** Calypso® to Equator™ Authoring

New Equator Authoring

Color SPC Maps/Point Cloud

The IMTS 2014 QIF 2.0 Interoperability Demonstration video is now

[Origin Celebrates 20 years](#)

[available on YouTube.](#)

[Quality Digest Interview on QIF](#)

Get Your Copy Now

Typical
Launch
Costs

LaunchRite

Shadow
Projects

CheckMate

WHICH ONE ARE YOU?

Quality Professional

or

Manufacturing Engineer

FEATURED
[White Papers @ OriginIntl.com](#)

1- [SoftFit Solver: The What, Why & How](#)

2- [SoftOrient R and R](#)

3- [LaunchRite - The Secret of Faster Launches](#)

Quick Links
[OriginIntl.com](#)

Customers Login

Request a Demo

Video Library

TECH CENTRE PARTNERS WITH ORIGIN

Burton Precision

[Origin International](#), a leader in manufacturing metrology software for over 20 years, is pleased to welcome Burton Precision to our rapidly growing family of Origin Resellers and Tech Centres from coast to coast.

Burton Precision's highly trained technical team will be providing these services to their customers in Western Michigan. This includes Origin's popular [CheckMate](#) suite of [software solutions](#) including programming, analysis, new part launching, CMM translators, and many other new and creative software. visit www.originintl.com

In addition, Burton Precision provides creative solutions for any design and manufacturing need including printers, scanners and precision measuring tools along with a full range of services. Leasing, pre-owned and demonstration equipment is also available. Visit www.burtonprecision.com

Contact Jim at (616)-784-1756 or email Sales@burtonprecision.com

OUR WEBINAR LINK HAS CHANGED

Origin's Webinars

Customers now have BBS access to a folder called 'Webex Presentations'. In this folder you will find all the webinars plus a few more videos of interest. If you click on the desc link, you will get a description of the video/webinar. Also, you can see the list on our website at [Webinars on video](#) under the Resources section.

CHECKMATE AFTER CLASS

Origin International provides webinars for CheckMate customers with an annual support plan. These webinars cover applications, procedures, advance commands that time does not allow in a standard training class.

These Webinar sessions are online training sessions that you can either: 1) register to view live or 2) download and view at your convenience.

If you missed the after class webinar, [Click Here](#) to Download to view at your own convenience from our website.



UPCOMING WEBINAR

[Sign up for this one](#)

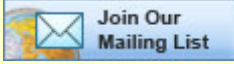
**Organizing CAD
CheckMate for SOLIDWORKS®**

Date: Thursday, Nov. 27th, 2014

Time: 11:00 am, EST (GMT-04:00)



Join Our List



Misc Quick Links

Description: This webinar will be reviewing the procedure to organize the CAD geometry from the Feature Manager Design Tree.

[Click Here](#) to register for the meeting.

Once the host approves your request, you will receive a confirmation email with instructions for joining the meeting.

Note: If you already registered for this meeting, you do not need to register again.

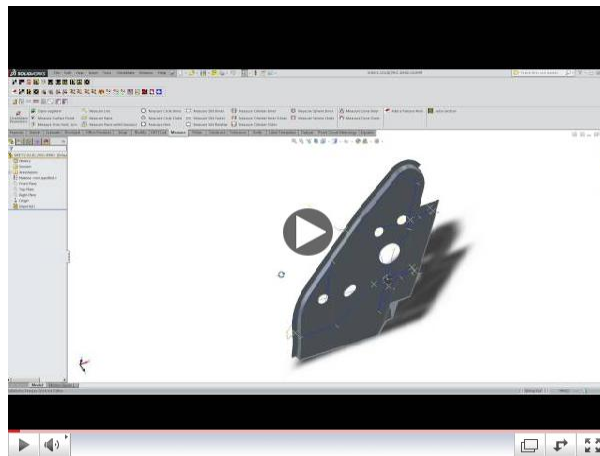


To view in other time zones or languages, please [click here](#)

Did you Know...

Cecil..Our CheckMate expert says...

How to get rid of part shadows in CheckMate for SOLIDWORKS®.



ORIGIN INT CheckMate TechTip 102314

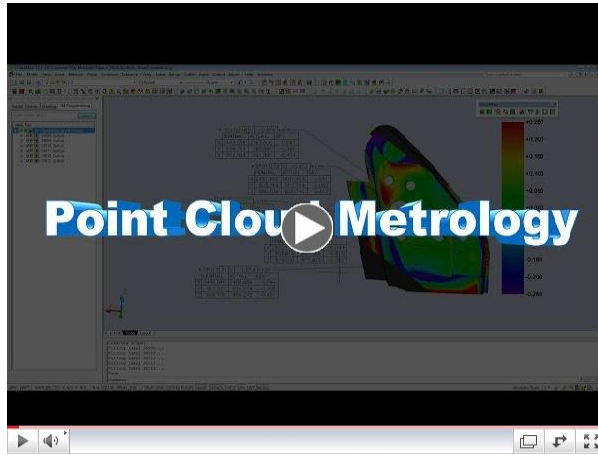
Top 5 Tech Tip's

1. Translate/rotate your CAD part using CheckMate for SOLIDWORKS®. [Click Here](#)
2. Initial settings when firing up CheckMate for SOLIDWORKS® for the first time. [Click Here](#)
3. Setup two windows when you are comparing two dwg files, using the WINDOWS menu. [Click Here](#)
4. Defining a text editor. [Click Here](#)
5. Pop up box disappears. [Click Here](#)

ORIGIN'S featured VIDEO

Check out this video on Origin's Point Cloud Metrology

CheckMate Point Cloud Metrology (PCM) brings together the speed of modern scanning technology with the power of CheckMate's suite of industry-leading CAD based metrology and inspection tools for the first time.



Origin International Point Cloud Metrology

ON-LINE TRAINING NOW AVAILABLE

You asked...we listened

We now offer on-line training for users of our CheckMate software to save you travel time and expenses.



For more information...[contact us](#)

SOLIDWORKS® INFORMATION

Hot Links to SOLIDWORKS®

If you are buying a new computer or you want to make sure your current system meets the requirements here are some links that you should check-

System Requirements:

<http://www.solidworks.com/sw/support/SystemRequirements.html>

Graphic Card selection:

<https://www.solidworks.com/sw/support/video-card-testing.html>

CHECKMATE 12.1 FOR XP END OF LIFE NOTICE

Effective Dec. 31, 2014

As of December 31, 2014, enhancements and updates for CheckMate 12.1 will no longer be delivered for the XP operating system. Going forward, having both versions of CheckMate, CM12.1 for Autodesk MDT and CheckMate for SOLIDWORKS® on Microsoft Windows 7 will serve to ensure a more rapid and smooth transition to the SOLIDWORKS® platform.

CHECKMATE Updates -

OriginIntl.com

Stay Current with Updates



Customers who log in to our BBS will have access to a new folder called 'CheckMate 14 SOLIDWORKS®' for this new release and other information related to it.

Hardware Requirements for CheckMate for SOLIDWORKS®

Hardware:

- Hardware: Windows 7 - 64 bit, 2.5GHz CPU, 12 GB Ram
- Quad Core processor (as many processors as can be obtained)

Software:

- SOLIDWORKS® 2012 or later (64bit), CheckMate for SOLIDWORKS® (64bit), CheckMate 12.1.418 or later (64bit)
- Network: Licensing for SOLIDWORKS® and CheckMate

[CheckMate 12.1.441 x86 Phase II update](#)

[CheckMate 12.1.441 x64 Phase II update](#)

[CheckMate for SOLIDWORKS® 14.441 X64](#)

NOTE: To update CheckMate for SOLIDWORKS®, uninstall and re-install the newer version.

INTERNET EXPLORER 10 COMPATIBILITY ISSUES

Compatibility View

You may have noticed some pieces of our website missing in I.E. 10. If this is the case, you may need to run in compatibility view.



UPGRADING TO WINDOWS 7

Take Note of the Following:

- The new CheckMate release 12.1 supports both 32 bit/64 bit.
- We recommend Windows 7 - 64 bit with "Administrator" rights
- Change your "Shortcuts" to run as administrator



[Click Here](#) for more details (*log in to our BBS*)

IMPORTANT NOTICE

Autodesk/MDT Licensing

Effective February 1, 2014, customers will deal direct with Autodesk for any Mechanical Desktop 2008/2009 reactivations. If any of the following apply to you.

1. UPGRADING COMPUTER
2. COMPUTER CRASHES
3. SERVER UPGRADE OR CRASHES

For more information, [click here](#)

Reseller/Distributor Opportunity

Manufacturing process & inspection software/hardware

Attention resellers: In order to better serve industry needs, Origin is looking to expand its software Reseller/Distributor organizations serving the automotive, aerospace and other metal and precision plastic industries in North America and Globally. Suggestions of organizations our customers may be familiar with are welcome

Reply to Janet.wiaderny@originintl.com

FEEDBACK

We hope to hear from you

Please rate the value of this newsletter from 1 TO 5 (1) not much to (5) Extremely. [CLICK HERE](#)

Let us know if there others in your company who might find these news letters of interest.

Please send recent past and current newsletters to [CLICK HERE](#)

Origin International Inc. is focused on providing software solutions and consulting services to world class manufacturers, their suppliers and industry leading metrology solutions providers.

Manufacturers that choose Origin software solutions are industry leaders in innovation, quality and cost effectiveness within the Automotive, Aerospace, Transportation and Consumer Products industries.

If you would like more information, don't hesitate to contact us at 1-800-269-2509.

Sincerely,

Janet Wiaderny
Origin International Inc.
sales@originintl.com
support@originintl.com
info@originintl.com

[Forward email](#)

 **SafeUnsubscribe**[®]

This email was sent to janet.wiaderny@originintl.com by janet.wiaderny@originintl.com | [Update Profile/Email Address](#) | Rapid removal with [SafeUnsubscribe](#)[™] | [Privacy Policy](#).

Origin International Inc. | 72 Baynards Lane | Richmond Hill | Ontario | L4C9B8 | Canada