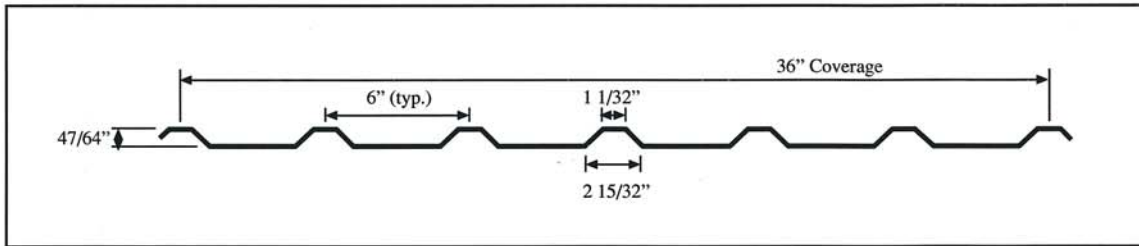


U-PANEL

PRODUCT INFORMATION



U-Panel is an exposed fastener wall and roof panel. U-Panel is also used extensively as a liner panel.

PANEL OPTIONS

Panel Width: 37 15/16"

Panel Coverage: 36"

Standard Panel Length: Up to 40'
Please inquire for longer lengths.

Rib Height: 47/64"

Major Rib Spacing: 6" on center.

Minimum Slope: 2:12
Tape sealant is required on seam (side laps)

Substrate: Galvalume®

Paint System: Kynar 500®

Gauge: 26 and 24

COLOR AVAILABILITY

GAUGE		BARE
24	26	GALVALUME PLUS
GAUGE		KYNAR 500®/HYLAR 5000™
24	26	REGAL WHITE
	26	ROMAN BLUE
	26	CLAY
	26	IVORY
	26	SURREY BEIGE
	26	PATRICIAN BRONZE
	26	ASH GRAY
24	26	LIGHT STONE
	26	AUTUMN RED
	26	MATTE BLACK
	26	TUDOR BROWN
	26	CHARCOAL
	26	EVERGREEN
	26	BRANDYWINE
	26	HARTFORD GREEN

MAKO
STEEL
INC.

800-383-4932

www.makosteel.com

info@makosteel.com

U-PANEL SECTION PROPERTIES

Panel Gauge	Weight PSF	FY KSI	TOP IN COMPRESSION			BOTTOM IN COMPRESSION		
			Ix IN.4	Se IN.3	Ma KIP IN.	Ix IN.4	Se IN.3	Ma KIP IN.
26	0.91	80	.0186	.03474	1.2481	.0128	.03261	1.1715
24	1.14	50	.0257	.04893	1.4650	.0181	.04629	1.3858

1. Section properties are calculated in accordance with the 1986 Edition of the Cold Formed Steel Design Manual.
2. Ix is for deflection determination.
3. Se is for bending.
4. Ma is the allowable bending moment.
5. All values are for one foot of panel width.

 **McElroy Metal, Inc.**

U-PANEL