



# GSX Monitor Version 10

## What's New?

GSX is pleased to announce the release of **GSX Monitor** Version 10 is scheduled for early 2011.

**GSX Monitor** is the most widely used monitoring tool for collaboration environments and safeguards the operation of over 5 million email accounts worldwide. **GSX Monitor** is installed quickly and easily on a client workstation, and provides real-time monitoring with proactive alerts for your entire collaboration environment.

## GSX Monitor

Now you can also monitor IBM Traveler, IBM Quickr, and Microsoft Sharepoint



### NEW IBM TRAVELER MONITORING

- ✓ Monitor Traveler service availability
- ✓ Receive alerts in the event of a failure of the Traveler service or related services
- ✓ Monitor the Traveler server task
- ✓ Monitor the Traveler servlet
- ✓ Alert on outdated device synchronization
- ✓ View users and their associated devices
- ✓ Device synchronization count
- ✓ Generate metrics – new built-in statistics for Traveler reporting

Up	Traveler Servers	User
<span style="color: green;">●</span>	GSX Traveler Server	<span style="color: green;">●</span> 5
<span style="color: red;">●</span>	Test Traveler Server	<span style="color: gray;">○</span>

### NEW IBM QUICKR MONITORING

- ✓ Monitor your Quickr server and service availability
- ✓ Track and monitor the availability of key places
- ✓ Monitor authentication, place, and catalog
- ✓ Utilize the new Quickr statistics for reporting

Up	QuickR Servers	Place
<span style="color: green;">●</span>	GSX QuickR Server	<span style="color: green;">●</span> 6 35
<span style="color: green;">●</span>	WorlWide QuickR Server	<span style="color: green;">●</span> 1012 5139

### NEW MICROSOFT SHAREPOINT MONITORING

- ✓ Monitor key services and availability
- ✓ Report on site usage, indexer workload, and catalog statistics
- ✓ Monitor services and components
- ✓ Monitor key site availability and response times

## NEW BES SUPPORT FEATURES

New alerts for BES 5 HA environments:

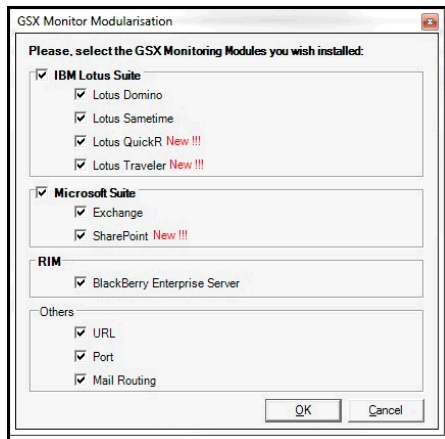
- ✓ Receive an alert when failover occurs
- ✓ Receive an alert when cluster is running on secondary server
- ✓ Receive a reminder that manual BES failback is required

## NEW MICROSOFT EXCHANGE SUPPORT FEATURES

- ✓ Monitor DAG availability and performance
- ✓ Monitor DB store availability and performance
- ✓ Monitor CAS availability

## MORE GSX MONITOR NEW FEATURES

- ✓ New modular install – only install the server types and components you need:



- ✓ Simplified and condensed Server Settings tab
- ✓ New Domino database probes:
  - Track index size
  - Databases with indexes
  - Indexes over a user defined size threshold
- ✓ New reports to track mail forwarding

## NEW SAMETIME 8.5 SUPPORT FEATURES

- ✓ Monitor the availability of Sametime 8.5 services
- ✓ Monitor the Sametime System Console
- ✓ Monitor the Sametime meeting server
- ✓ Monitor the Sametime proxy server
- ✓ Monitor the Sametime Media Server
- ✓ Monitor persistent meetings – ensure that specific meetings are available
- ✓ Monitor DB2 and Websphere components

# GSX Analyzer

## NEW GSX ANALYZER FEATURES

Consolidate your Traveler and Quickr reporting with your other server types:

- ✓ Consistent metrics and user-experience measurement strategy
- ✓ Key statistics, usage metrics, and trends
- ✓ User level statistics
- ✓ Server level statistics
- ✓ Daily, weekly, and monthly reports
- ✓ Long term trends
- ✓ Environmental health comparatives

### Additional GSX Analyzer New Features:

- ✓ Multi-server comparatives
- ✓ Enhanced formatting controls to share across all auto-generated and on-the-fly reports
- ✓ Improved profile and user set-up features
- ✓ New structured reports to tap the power of the Environmental Health tab



## SOLUTIONS:

GSX Monitor and GSX Analyzer  
GSX Server Guard  
GSX 360

## SERVICES:

Consultancy  
On-site training  
Support



## FOR MORE INFORMATION:

For more information on GSX, visit [www.gsx.com](http://www.gsx.com), where our resource center contains FAQs, Case Studies, Podcasts, White Papers, and Webinars.

You can also download a fully functional, 30 day evaluation copy of GSX Monitor, GSX Server Guard, and GSX 360.

## CONTACT:

[sales@gsx.com](mailto:sales@gsx.com)

