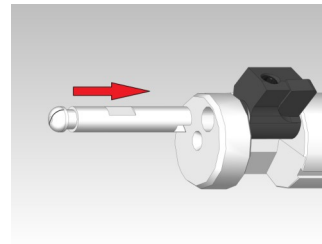


IMPORTANT

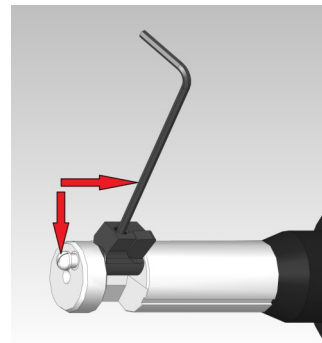
Reliability of Autofacer depends on cutting blade being locked onto flat of Pivot Pin

Cutter Installation Instructions

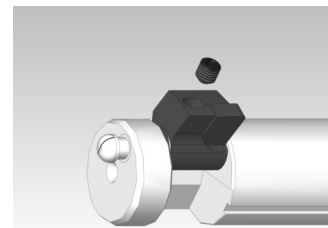
Insert pivot pin into Cutter Body and Blade. Turn Pivot Pin until it engages tang of Activating Rod.



With blade in open position, rotate clutch of tool until the alignment mark line on the pivot pin is aligned with hex wrench and set screw in blade. This will ensure that set screw is aligned with flat on Pivot Pin. (For pivot pins without alignment mark, remove screw completely and visually verify that tapped hole is lined up with flat).



Apply a small amount of serviceable Loctite provided to thread of screw. Hand tighten set screw, being careful not to overtighten. If second follow-up screw is provided, install and hand tighten.



TIP: To verify that set screw is located on flat of Pivot Pin, loosen set screw slightly and attempt to pull Pivot Pin out of tool. The pin should only be able to slide until the set screw gets caught on the end of the Pivot Pin flat.