



THE ORION PLATFORM®





Tracing its legacy back almost 100 years, Intermap Technologies® is a leading provider of geospatial solutions. The company was the first to collect, aggregate, and commercialize geospatial data from around the world.

Fundamental to the company's success are its innovations in 3D digital modeling, geometric imaging, data acquisition, data fusion, and 3D Business Intelligence applications.

These days, Intermap is a global geospatial solutions leader focused on improving the ways people, businesses, and governments use location-based information.

Intermap's products and services, which include the NEXTMap® 5-meter terrain datasets, NEXTMap World 30™, NEXTMap World 10™, AdPro®, GeoPro™, HCAPro™, InsitePro™, mapping services, and data fusion, are delivered via the company's proprietary Orion Platform®.

The Orion Platform is the industry's first software-driven spatial data platform that enables an organization to manage its entire spatial data infrastructure from one unified control point.

People around the world leverage components of the Orion Platform everyday to turn big data into simple, location-based answers.

We look forward to working with you, and in the meantime, welcome to a place where "Yes" is a way of life. Welcome to a place where people are empowered to serve you. Welcome to a place where the customer is always right.

Welcome to Intermap, home of the world's most comprehensive location-based solutions.



WHAT IS INTERMAP'S ORION PLATFORM?

Simply put, Intermap's Orion Platform provides the infrastructure upon which Intermap delivers your customized and scalable geospatial solutions.

More importantly, Intermap's Orion Platform enables customers to choose the products and services that are right for them based on scope, budget, and timeline.

For instance, some customers might only need a quick terrain dataset for their area of interest. For that we offer NEXTMap World 10.

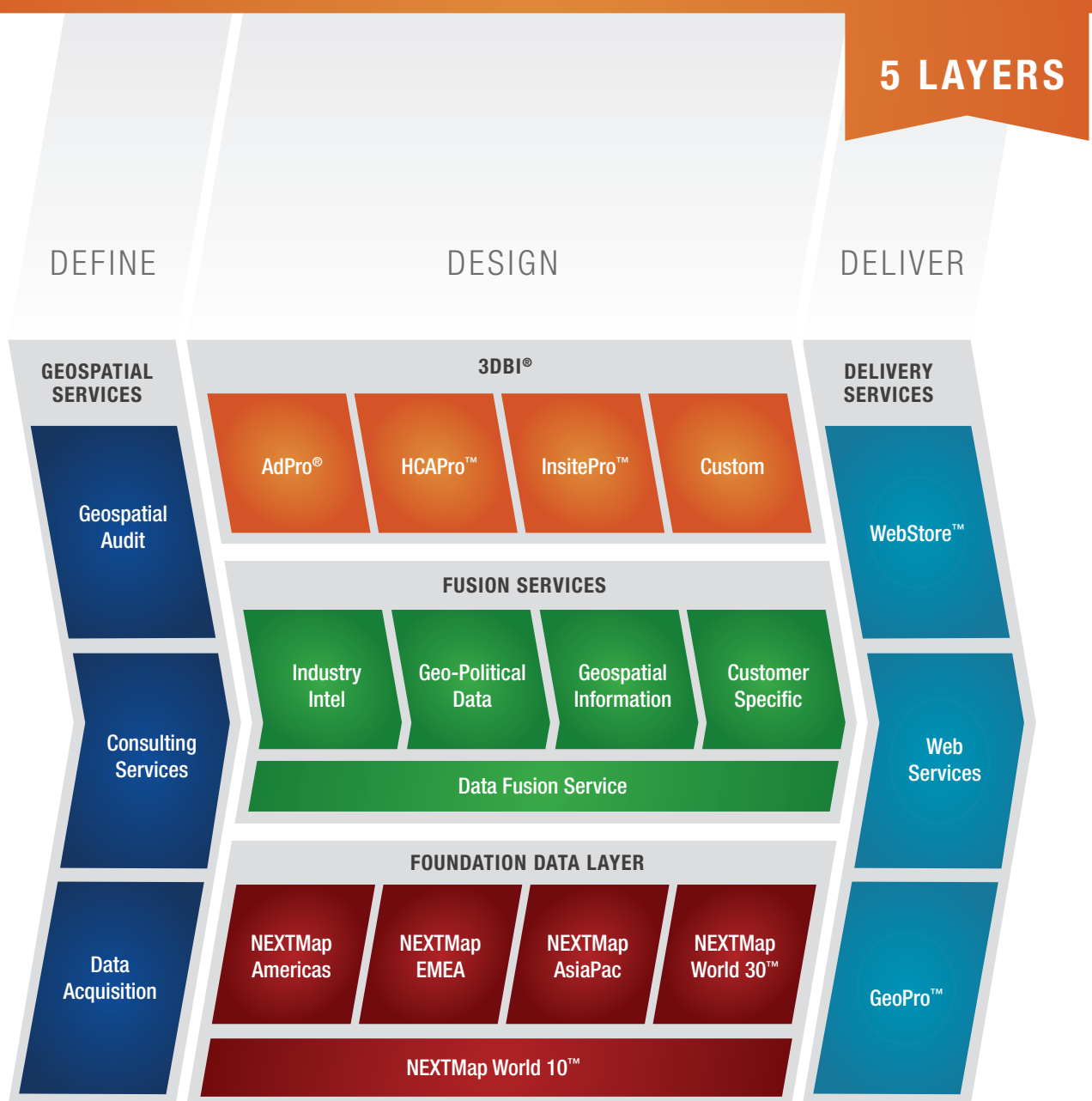
Other customers might require a custom data collection of their country's rivers, lakes, and coastlines for flood management planning. For that we offer our data acquisition services and our Terrain Filter and Frequency Fusion technologies.

And still other customers might require the integration of multiple elevation datasets with demographic data. For that we offer a combination of geospatial auditing, data fusion, 3D Business Intelligence applications, and the ability to host this solution in the Intermap cloud or on an appliance in their data center.

INTERMAP'S ORION PLATFORM HAS

5 LAYERS

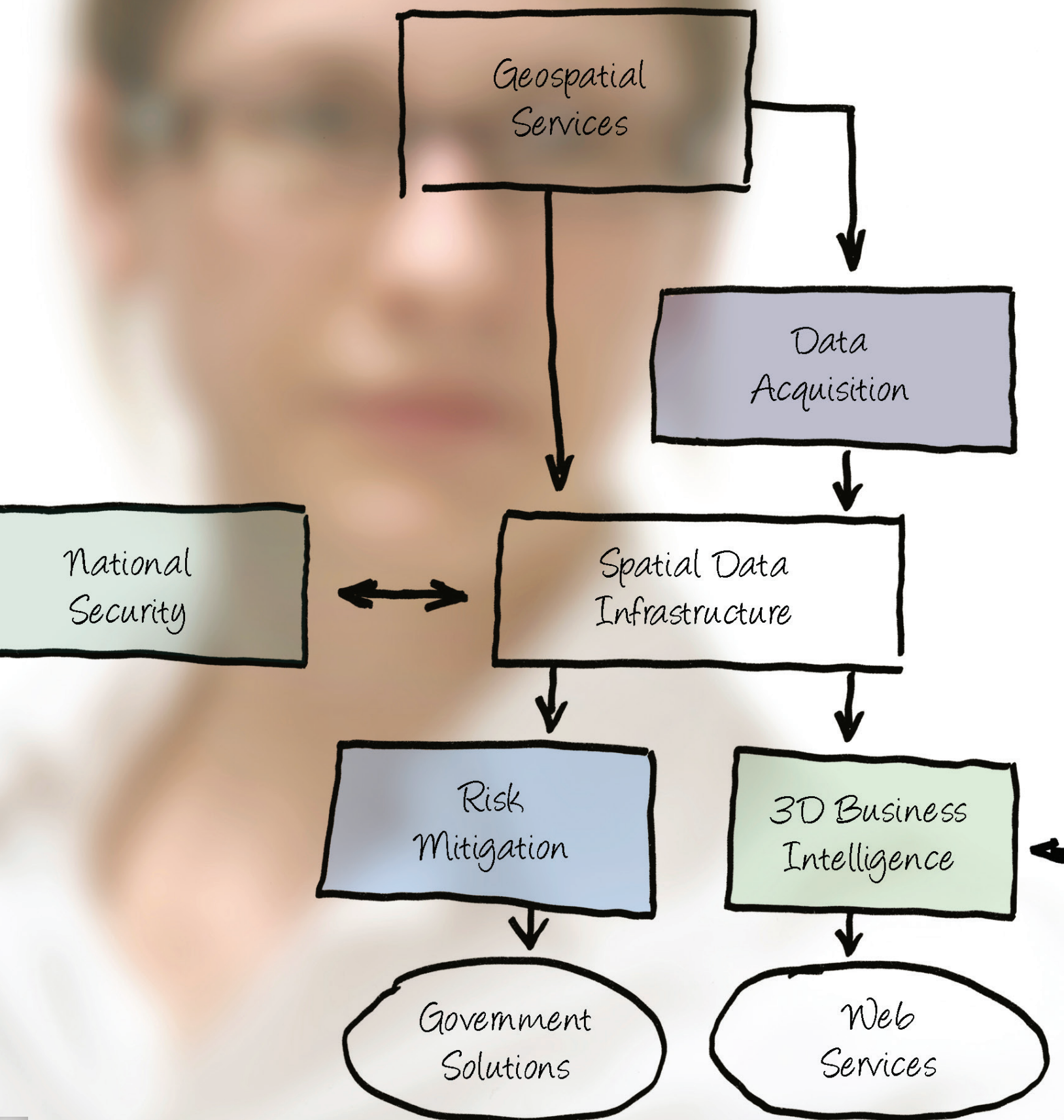
- 1 GEOSPATIAL SERVICES:** We offer a comprehensive suite of geospatial auditing, professional consulting, and data acquisition services to meet your needs.
- 2 FOUNDATION DATA:** Consider the power of immediate access to the world's most comprehensive 3D elevation information and you'll understand why we call this our foundation data layer.
- 3 FUSION SERVICES:** We are a leader in the aggregation of structured and non-structured information from multiple sources into a unified solution.
- 4 3D BUSINESS INTELLIGENCE (3DBI®):** As a leading provider of location-based information solutions, Intermap has developed software and a platform that transforms the way governments and enterprises leverage both geospatial and non-geospatial data.
- 5 DELIVERY SERVICES:** Intermap offers an array of delivery systems for managing and sharing your solution.



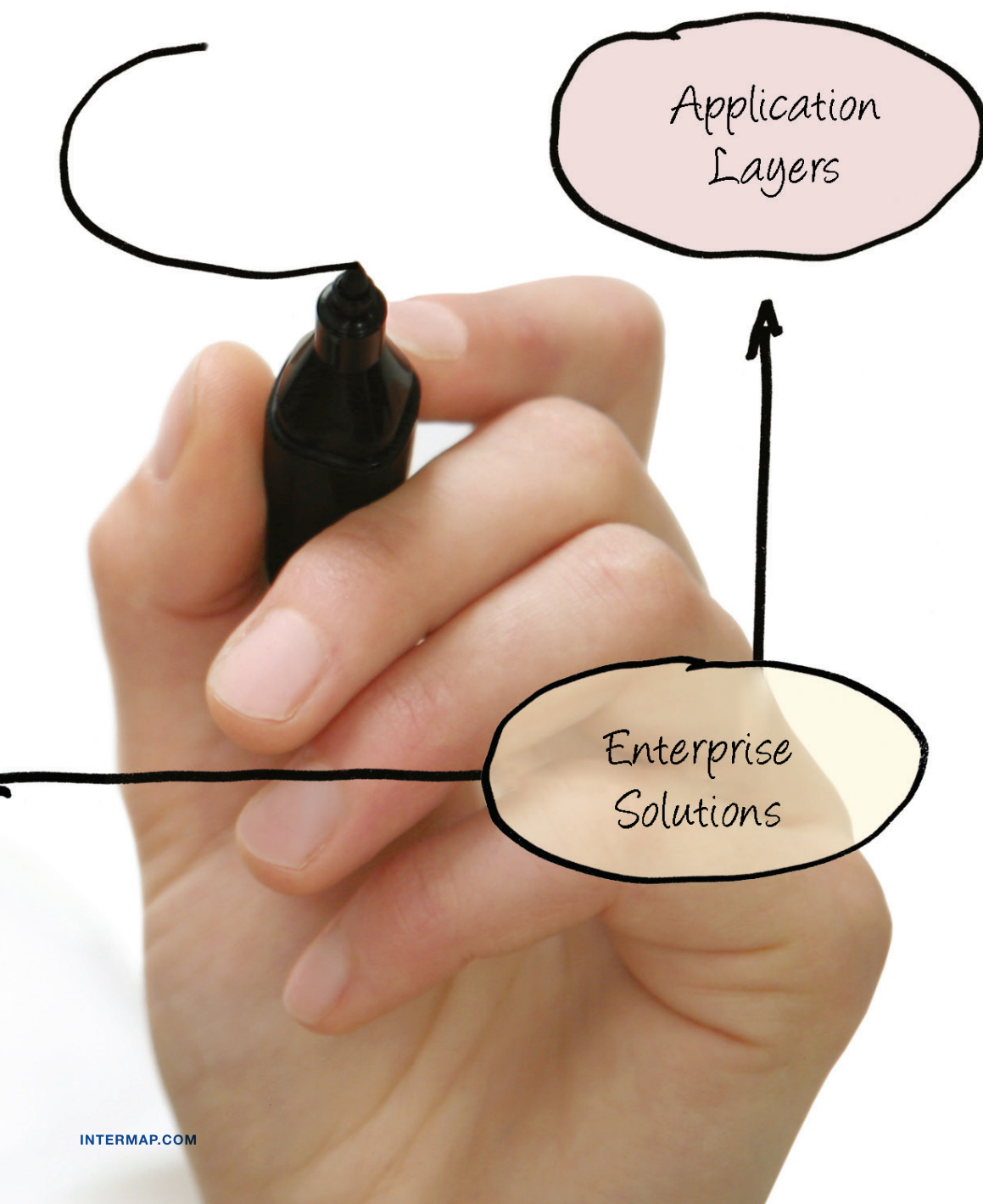
The simple idea behind Intermap's Orion Platform is that we start by thoroughly defining your project requirements. Next, we work with you to design the right overall solution. And finally, we listen to your data distribution needs and determine the best delivery method. Our Orion Platform turns complicated data into fast answers for any user — no geospatial expertise required.

Define. Design. Deliver. It's the proprietary process that makes our Orion Platform so successful. The important thing to remember is that Intermap is there for you, no matter what your geospatial challenge is. We will roll up our sleeves and deliver your solution.

On time and on budget. Guaranteed.



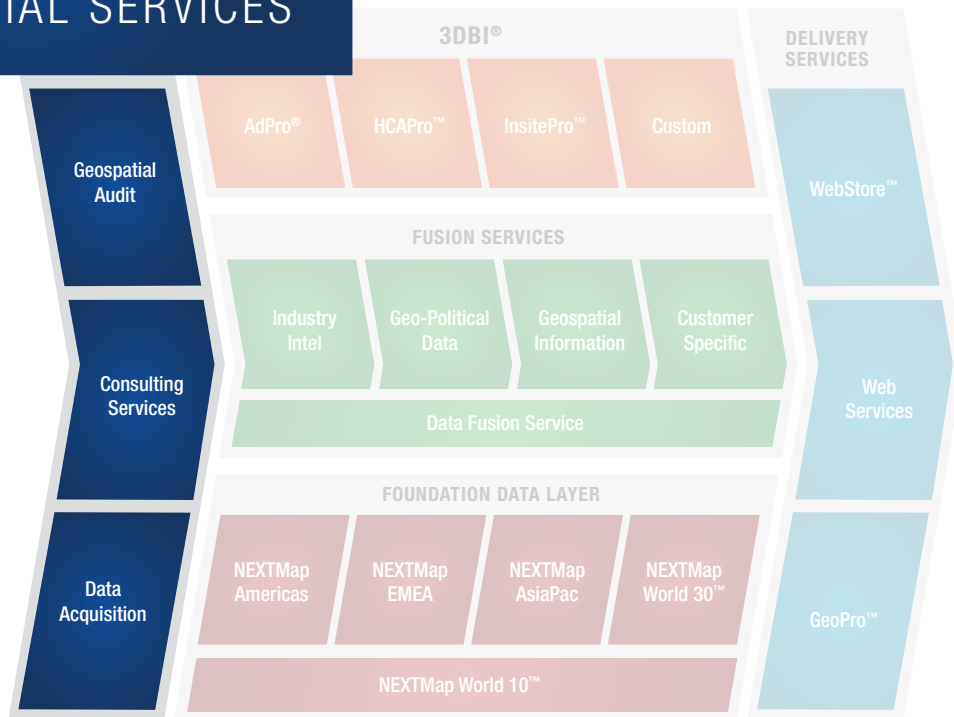
NO MATTER THE INDUSTRY OR THE CHALLENGE,
INTERMAP HAS A SOLUTION FOR YOU.



LAYER

1

GEOSPATIAL SERVICES




When you need help making sense of complicated information, answers are often hard to come by. A critical planning challenge can be mismanaged — or left unsolved — when the scope of the problem or its remedy is misunderstood.

Decade after decade, Intermap Technologies has helped our customers overcome these challenges through our unrivaled geospatial expertise. We provide worldwide geospatial services that leverage our advanced technologies, award-winning 3D elevation production system, and highly skilled team members to help businesses and governments make sense of even the most complex problems.

» GEOSPATIAL AUDIT

To get your project off to a successful start, we can provide you with a comprehensive geospatial audit. This consultation will help you define your short-term project requirements and long-term strategic objectives. We analyze your geospatial business processes and requirements, industry standards, database design and implementation, application development, and overall geospatial enterprise integration. Once those are understood, we recommend the most cost-effective solution best suited for your needs.



USE CASE NO. 1

In advance of an Intermap Mapping Services contract, an Intermap partner completed a geospatial audit in which several critical success factors were identified, classified, measured, and communicated to the United States Geological Survey (USGS) geospatial program office to ensure its program goals would be attained.

» CONSULTING SERVICES

Through our detailed consulting services, Intermap's team of trusted and experienced geospatial professionals will help you identify and implement innovative solutions leading to rapid improvements in your operational performance, process management, and strategic planning.

As part of our commitment to customized service, we are proud to be the only sensor-agnostic company in the geospatial industry. So rather than try to conform your project to just one technology, we will explore every possible approach to get the job done in a way that truly meets your needs.

USE CASE NO. 2

For an Asia Pacific country, Intermap has established a 9-month consulting services agreement to collect information, finalize requirements, and deliver a prototype Web-based risk management application. The prototype will enable visual decision making in response to flood, earthquake, and landslide disasters. The lessons learned during the long-term consulting engagement helped define their development roadmap for future risk management application expansion.

GEOSPATIAL SERVICES

» DATA ACQUISITION

Intermap provides custom airborne and spaceborne data collection services to help you create innovative geospatial solutions for numerous commercial, governmental, and defense applications. We consult with you to customize and deliver the most cost-effective solution, regardless of map scale.

To meet your accuracy and geospatial requirements, we provide an integrated solution with one or more data sources, including our proprietary airborne interferometric synthetic aperture radar (IFSAR) technology, or customer- or partner-supplied sources derived from light detection and ranging (LiDAR) technology, and/or spaceborne optical and IFSAR technologies.

Using Intermap's world-class enterprise 3D workflow allows us to integrate elevation datasets from a host of technologies and from locations around the world to provide best-of-class elevation models for the world. These elevation models (NEXTMap) have a range of accuracies starting at one meter LE90% (Linear Error 90%) aimed to meet your spatial data infrastructure requirements.

USE CASE NO. 3

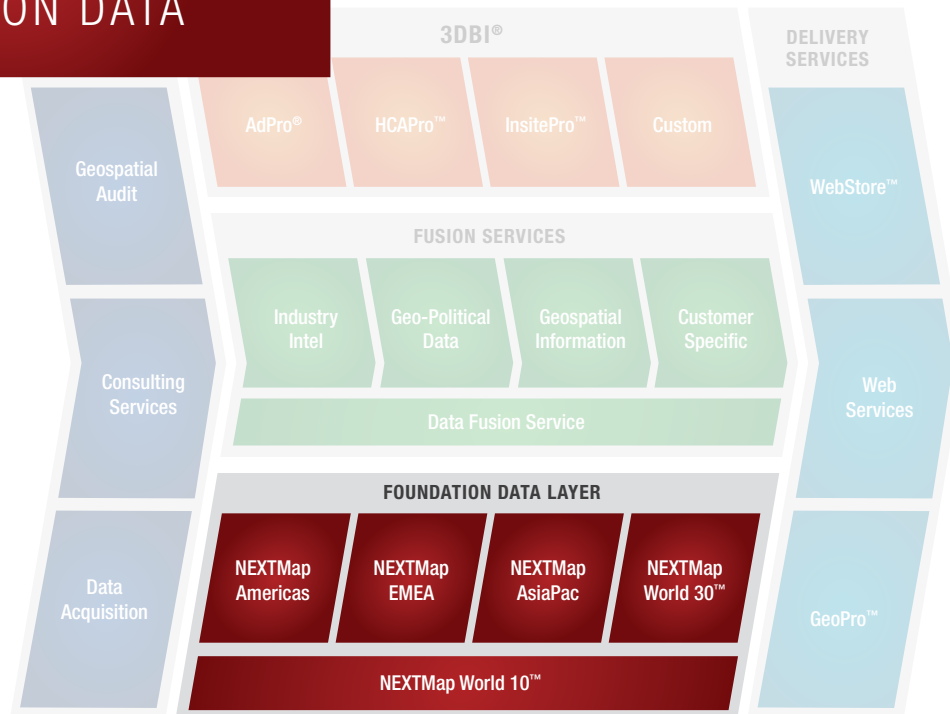
Intermap was contracted to provide 3D digital elevation models and orthorectified radar images (ORI) as part of a National Spatial Data Infrastructure (NSDI) program for a governmental entity in the Asia Pacific region. This contract will result in the update of the customer's current 1:50,000-scale base maps and will also be used for topographic map production to manage sustainable forestry projects and to support other important infrastructure needs.



LAYER

2

FOUNDATION DATA



» NEXTMAP

Intermap's foundation data layer is NEXTMap. The NEXTMap database represents the most homogeneous and accurate elevation product commercially available today.

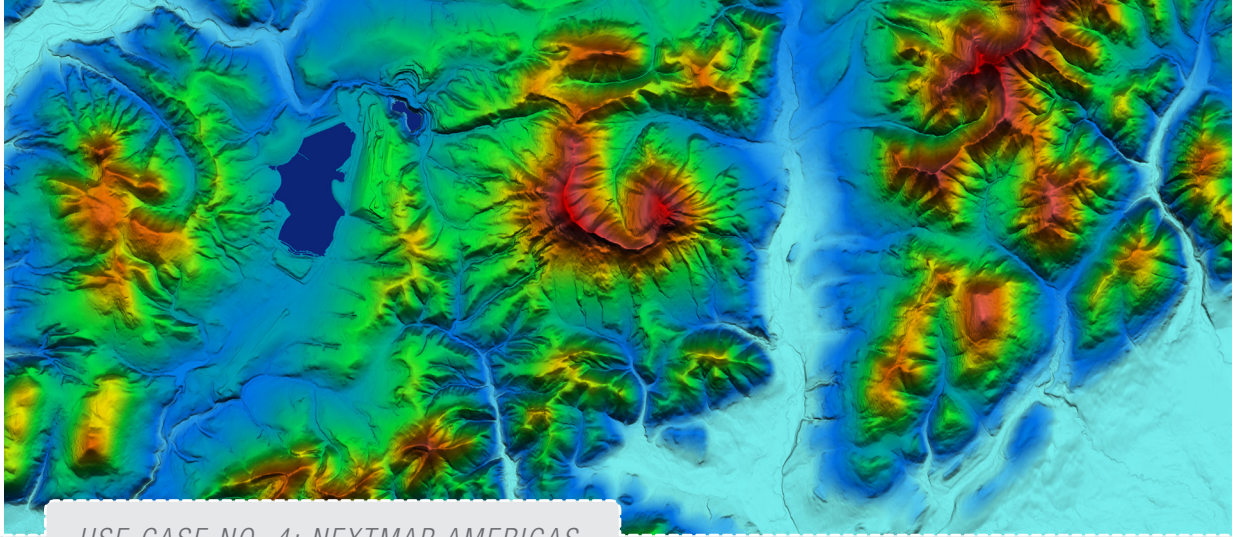
Customers use NEXTMap data to drive applications such as base, topographic, and geological mapping; flood modeling; defense; watershed and viewshed analyses; emergency response; forestry; environmental risk planning; contour generation and more.

We ensure our data is seamless and consistent throughout the world.

Our ISO-certified geospatial processing facility optimizes our NEXTMap products so they are:

Void-filled – missing data as a result of shadows, complex terrain, and/or look direction are filled via interpolation or with ancillary data to create a fully populated elevation dataset.

Hydro-enforced – structures over water bodies (such as bridges) are removed, water surfaces are flat, and watercourses flow downstream to enable flood modeling applications.



USE CASE NO. 4: NEXTMAP AMERICAS

A California corporation required highly refined elevation data to create a preliminary engineering design for a massive high-speed rail planning project. This company found their solution with Intermap's detailed and extremely accurate NEXTMap products, including digital terrain models (DTM), digital surface models (DSM), and 5-meter contours to define track alignment and optimal routing for the State of California's high-speed rail network. The result was they were able to move forward with the preliminary design project without spending money on a survey company.

USE CASE NO. 5: NEXTMAP EMEA

With over 18 million customers, Germany's third largest mobile telecommunications network operator needed a more precise DTM as a basis for their radio network planning. They chose NEXTMap based on the superior level of data detail, the precise and homogeneous dataset, and the ability to make better propagation models. With better radio propagation models, the company can make better investment decisions leading to increased customer satisfaction and higher profits.

USE CASE NO. 6: NEXTMAP ASIAPAC

In 2011, Malaysian partner Antaragraphik worked with Intermap to secure the provisioning of NEXTMap Malaysian bundled data (DSM/DTM/ORI) to a lands and survey department in the region. The department utilizes NEXTMap as part of their planning programs relating to infrastructure development, risk management, and general planning purposes. Intermap has seen growth in the Malaysian and Asia Pacific markets in recent years as our NEXTMap product line provides a significant accuracy improvement over any of the other commercially and governmentally available elevation products in the region.

FOUNDATION DATA

» NEXTMAP WORLD 30

NEXTMap World 30 offers high value in an economical, comprehensive DSM for the entire United States, China, India, Russia, South America, Africa, the Middle East, the Asia Pacific region, and the polar ice caps.

Using advanced proprietary technology, World 30 fills the voids and corrects the errors inherent in the standard data available from resources such as the ASTER GDEM. The result is a high quality global DSM available at this price point, with 100% comprehensive coverage of the Earth's entire 150 million square kilometers.

» NEXTMAP WORLD 10

The NEXTMap World 10 DEM provides seamless, best-in-class data, and is available as both a DSM and, at long last, a DTM for the entire world. A 10-meter ground sampling distance (GSD) allows for demanding geospatial analyses anywhere on the planet. Key benefits include:

Worldwide coverage. 100% inclusion of the Earth's entire 150 million square kilometers enable comprehensive analysis.

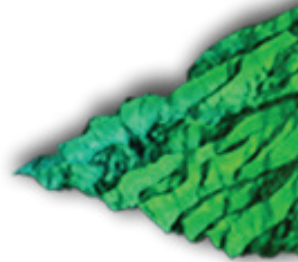
Global DTM. Obtain DTMs — with vegetation, buildings, and other features digitally removed — for any location in the world.

Proprietary data filtering. Intermap's new Terrain Filter and Frequency Fusion technologies allow us to create the best next-generation global DSM within our NEXTMap product line.

Enhanced terrain features. World 10 reveals terrain features that are not distinguishable in competitive digital elevation products.

Void-filled data. World 10 fills the voids and corrects the errors inherent in publicly available data for seamless coverage.

Frequent updates. World 10 is automatically and frequently enhanced with the latest elevation data for more informed decision making.



» NEXTMAP MAINTENANCE PROGRAM

The NEXTMap product suite continues to grow and improve in both currency and accuracy as part of our product update strategy. New acquisitions of elevation data are added on a consistent basis and come from many collection sensors. As newer information becomes available, our foundation layer of NEXTMap products is enhanced. Our NEXTMap Maintenance Program offers clients the ability to enjoy these enhancements for their area of interest automatically. The NEXTMap Maintenance Program is an add-on to a customer's traditional data/service purchase and is paid annually.



USE CASE NO. 7

Intermap's Peru agent purchased NEXTMap World 30 for a portion of the Cusco region to orthorectify regional imagery. A final report will be produced, and will include IGN certification of the precision of NEXTMap World 30 data for Peru.

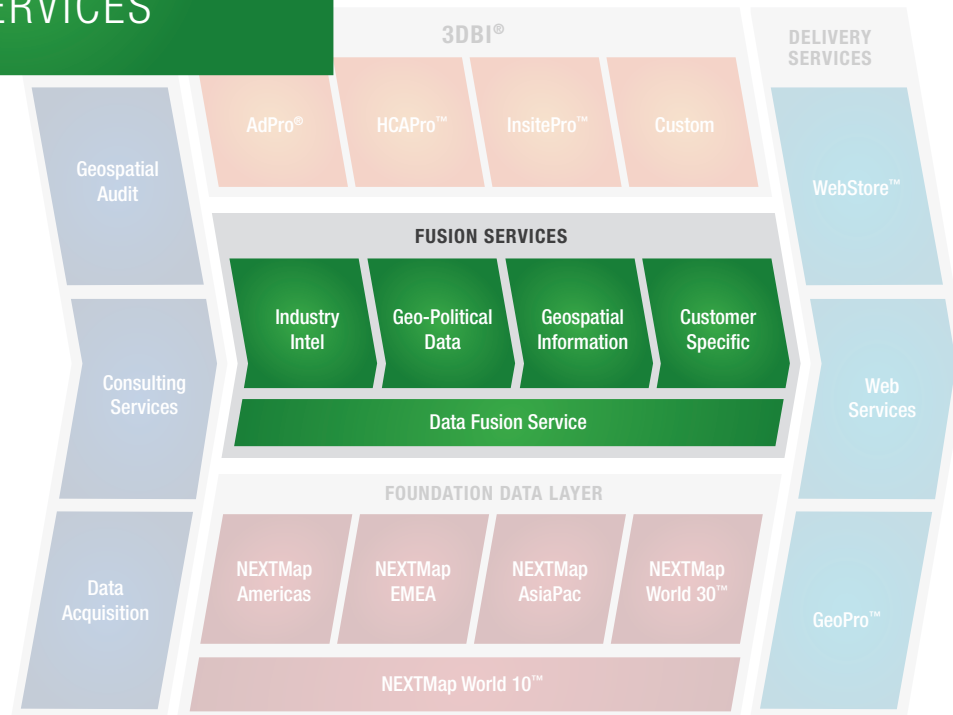
USE CASE NO. 8

A new NEXTMap client licensed all of NEXTMAP USA and NEXTMap EMEA. The client utilized our NEXTMap foundation layers to help complete a vast, online base map product for their user base. As part of the agreement, they recognized the importance of including maintenance to receive regular NEXTMap dataset updates.

LAYER

3


FUSION SERVICES



We are a leader, innovator, and developer of intuitive 3D geospatial solutions that aggregate structured and non-structured information, from multiple sources, to organizations that can be readily assimilated by decision makers. We have developed key components within our Orion Platform that highlight aggregation opportunities within key market segments, supporting numerous applications. As we continue in our aggregation services efforts, Intermap will expand our fusion solutions based on our customer needs.

» INDUSTRY INTEL

Intermap is a global leader in providing fusion services to industries worldwide that are challenged with managing large field components, equipment, and data in a cost efficient and effective manner. For example, in the oil and gas industry, our data helps companies determine where to drill, route a pipeline, or build related infrastructure and facilities. Intermap also helps to maximize asset value using geospatial solutions to improve the efficiency of operations. Other industries that can benefit from Intermap's Aggregation Services include: environmental risk management, network planning, and flood management, to just name a few.



USE CASE NO. 9

A U.S.-based integrated oil and gas company was awarded a 1.2 million-acre block off the island of Sulawesi, Indonesia. This company needed the most up-to-date topographical information and promptly purchased NEXTMap DSMs for the company's exploration projects.

» GEO-POLITICAL

Our readily available NEXTMap product suite, custom data acquisition capabilities, and 3D geospatial services provide national, federal, regional, and local government and jurisdictional agencies the geospatial and geo-political solutions that meet their diverse needs. These include:

- Defense and national security
- National and regional spatial data infrastructure programs
- Natural resource exploration, development, and management
- Flood modeling and watershed analysis
- Emergency response planning
- Natural resource conservation
- Environmental risk analysis
- Infrastructure planning
- General base mapping
- Image rectification
- Contour generation

USE CASE NO. 10

One of California's largest counties required high quality elevation data with greater accuracy for land development, flood control planning, watershed analysis, and planning projects. The county purchased NEXTMap 3D elevation datasets and images from Intermap, including DTMs for the 180-mile wide county that nearly matches the size of New Jersey. With Intermap's datasets, they will continue to reduce costs related to the land development process because they have a more accurate representation of the county's terrain.

FUSION SERVICES

» GEOSPATIAL

Now more than ever, governments and private enterprises are focused on the risks of natural disasters and the required mitigation to manage through them when they occur. With that in mind, our NEXTMap digital elevation data, combined with our Terrain Filter and Frequency Fusion technologies, can help you make critical water resource, floodplain management, and risk assessment decisions. Our geospatial products and services are current and worldwide allowing you to perform such analyses and risk assessments with a seamless digital elevation dataset across your entire area of interest (local, regional, or national).

Whatever geospatial content is important to you, whatever fusion of content is needed, Intermap is ready. Our patent-pending data aggregation and DEM fusion process and tools produce some of the most consistent, homogeneous, integrated, and accurate fused solutions allowing you to more effectively and efficiently assess, plan, and solve.

USE CASE NO. 11

An Australian state needed to produce a range of 3D spatial products using existing elevation data sourced from a Leica ADS40 photogrammetric sensor. Intermap was selected to create these products at our Jakarta, Indonesia, production facility. During phase one, we took the existing Government Furnished Product, ingested it into our proprietary Interferometric Editing System, and then provided both a DSM edit and DTM product. Next potential product phases include integration of topographical features such as hydrology, buildings, and vegetation.

» DATA FUSION

We offer affordable elevation data fusion solutions that bring multiple elevation datasets of differing resolutions and specifications together into one homogeneous data specification. This fused terrain elevation dataset is often more accurate and useful; e.g., seamless and hydro-enforced, than the individual input elevation datasets are alone.

Our world-class, ISO-certified production facility uses our proprietary Terrain Filter and Frequency Fusion process to establish a more accurate dataset when validated against national survey data. This more accurate dataset is then used as the foundation to which all other elevation data are fused into one homogeneous product. Intermap's fused end-product is hydro-enforced to ensure that structures over water bodies (such as bridges) are removed, water surfaces are flat, and watercourses flow downstream.

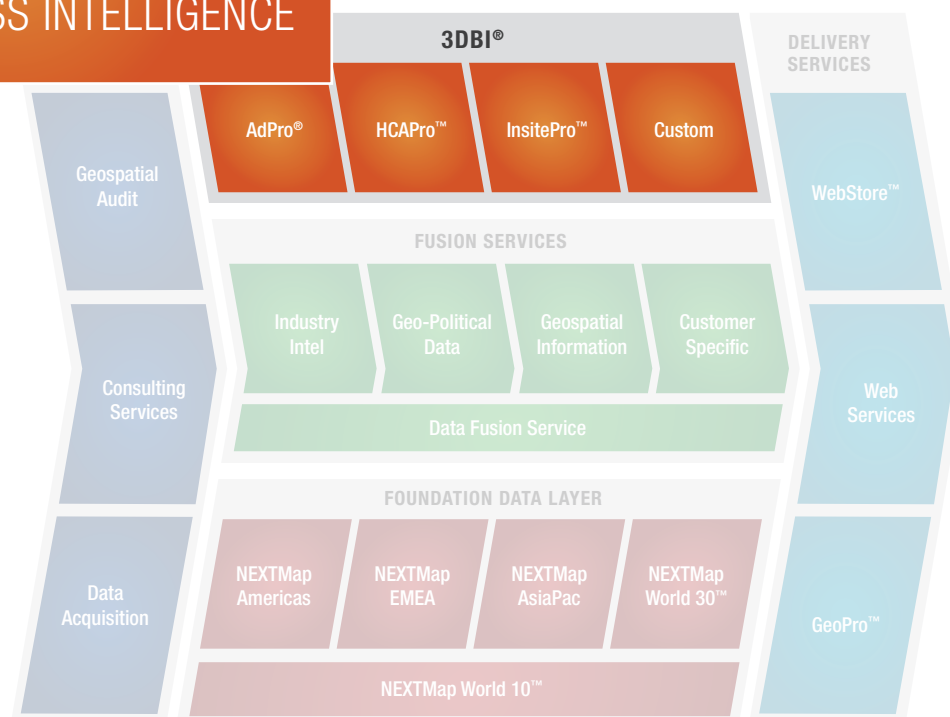
USE CASE NO. 12

Intermap provided elevation data and fusion services of various elevation datasets, including LiDAR for 17,000 km² of area within Italy, for a railway corridor project. Intermap provided both NEXTMap Italy products, as well as other additional value-added services in fusing the end client's existing LiDAR with our NEXTMap to provide a whole product and solution.

LAYER

4

3D BUSINESS INTELLIGENCE



As a leading provider of location-based information solutions, Intermap has developed an all-in-one software suite and platform that helps transform the way industries attain answers. The full suite of 3D Business Intelligence (3DBI®) software and online Web applications are designed intuitively so that any user can easily analyze complex data from any Web browser, delivering the answers needed to more effectively manage a business — without the need for GIS experts or GIS software.

Intermap's Orion Platform, and its suite of 3DBI software and Web applications, are designed to help GIS professionals and non-GIS users easily perform complex analysis from any Web browser. Our software plays the role of in-house GIS expert — so you don't have to.

» ADPRO®

This all-in-one Web-based application revolutionizes the way media buyers and owners manage and grow their outdoor advertising businesses. AdPro combines best-of-class traffic and mapping data, and TAB ratings, into one easy-to-use Web interface. AdPro subscribers enjoy all business intelligence content pertinent to developing more effective advertising campaigns and creating winning proposals all at their desktop.



USE CASE NO. 13

An independent out-of-home (OOH) media vendor with over 100 billboard locations across the United States utilizes AdPro to manage every aspect of their inventory. With AdPro's easy-to-use interface, they are able to generate proposals much faster and more effectively than with previous methods. They can easily manage clients and campaigns associated with their inventory, quickly showing their sales teams which locations are available for a particular time period.

3D BUSINESS INTELLIGENCE

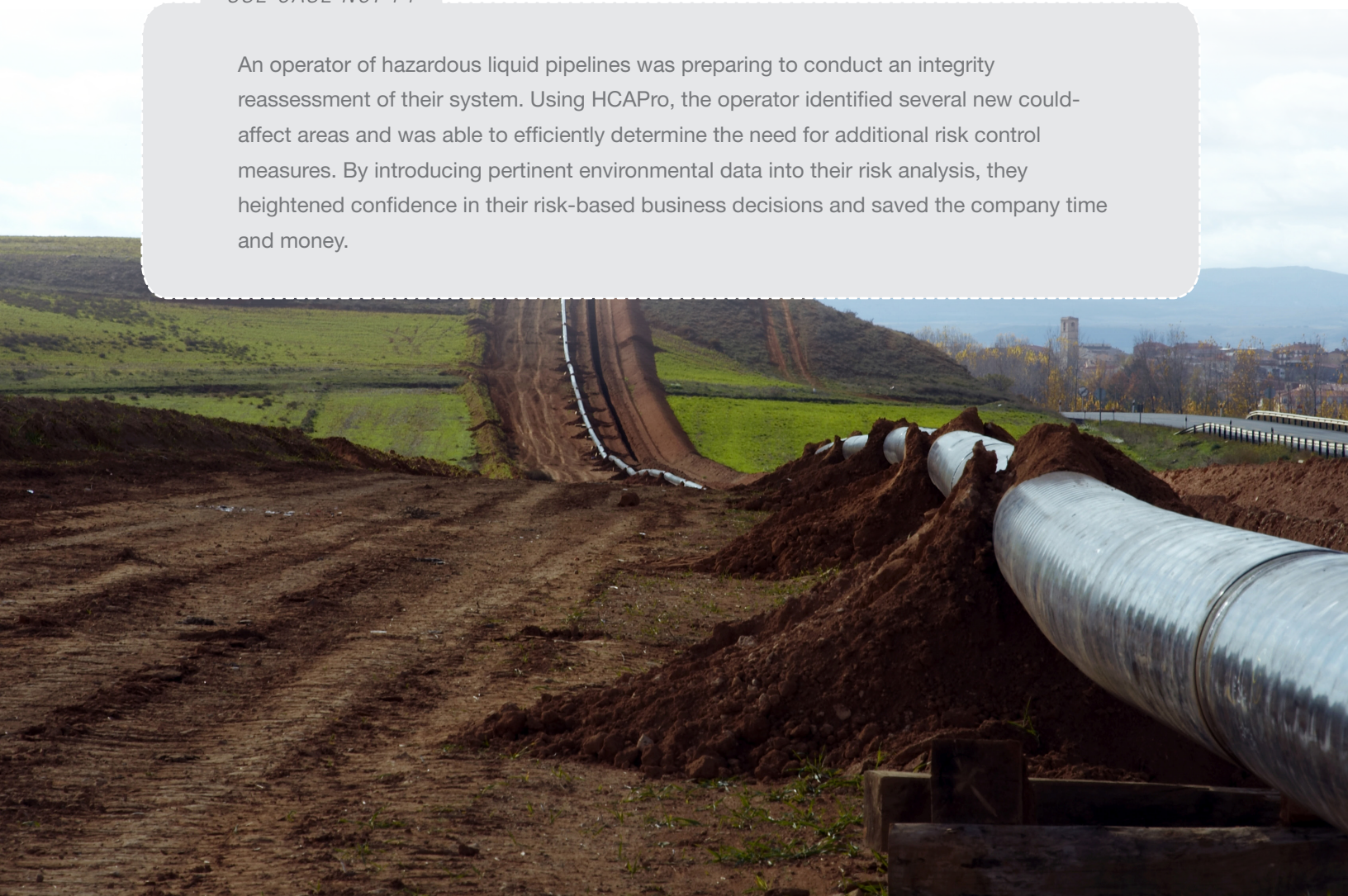
» HCAPRO™

Created specifically for hazardous liquid pipeline operators, HCAPro provides immediate, up-to-date, simple access to geo-hazards and High Consequence Areas (HCAs) throughout North America to enable risk-based decision-making and improved environmental regulatory compliance.

HCAPro features a dynamic and current geospatial dataset describing the locations of HCAs and other Unusually Sensitive Areas (USAs) that require special management practices. These include population, navigable waterways, ecologically sensitive areas, and locations that house public drinking water reserves.

USE CASE NO. 14

An operator of hazardous liquid pipelines was preparing to conduct an integrity reassessment of their system. Using HCAPro, the operator identified several new could-affect areas and was able to efficiently determine the need for additional risk control measures. By introducing pertinent environmental data into their risk analysis, they heightened confidence in their risk-based business decisions and saved the company time and money.





» INSITEPRO™

InsitePro is a Web-based application that provides fast, address-specific risk information for locations anywhere in the world, helping insurers, brokers, and risk managers make more informed decisions about managing risk.

InsitePro lets users explore location-based risk using Intermap's high-resolution terrain information as a foundation for the fusion of geospatial and satellite data, public records, and third-party datasets. The result is a powerful tool that can be used to analyze, visualize, and present risk information on a variety of perils.

InsitePro is a valuable tool for:

Insurers needing to underwrite properties more accurately and reevaluate their portfolios.

Brokers aiming to place natural catastrophe (nat cat) policies.

Property owners and investors concerned about protecting their homes, businesses, and assets.

Local and national governments needing to draft effective emergency preparedness and disaster contingency plans.

USE CASE NO. 15

A key benefactor to the Intermap InsitePro application used it in their provisioning of risk-related insurance throughout the consumer market within the Czech Republic.

3D BUSINESS INTELLIGENCE

» CUSTOM PLATFORMS AND SOFTWARE

The Orion Platform is composed of tools and components that make it easier for you to build a robust software application or solution quickly. With Orion, you can:

Manage complex geospatial and supporting business data.

Analyze geospatial and supporting business data.

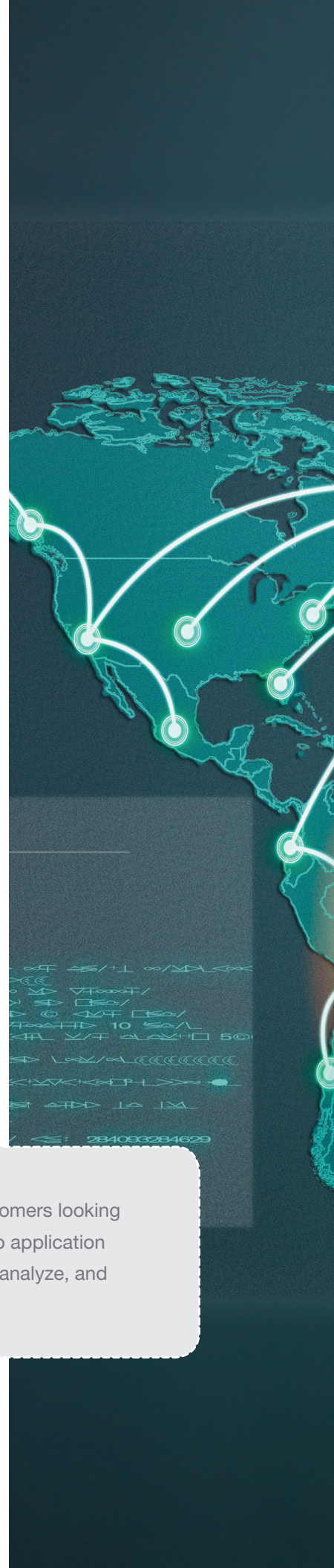
Visualize data in the form of maps, geospatial data layers, and tables.

Integrate easily into a new application or existing solution.

You'll be able to build secure, flexible, and scalable platforms faster and better by taking advantage of prebuilt units of code and Intermap's expertise in geospatial management and analysis. With the Orion Platform, you can focus on the solution to meet your customer needs and get to market more quickly.

USE CASE NO. 16

An independent insurance broker used The 360 Report™ by Intermap for customers looking at residential and small business property insurance. The 360 Report is a Web application that accesses multiple components of the Orion Platform to aggregate, fuse, analyze, and report on the risk factors affecting an address.



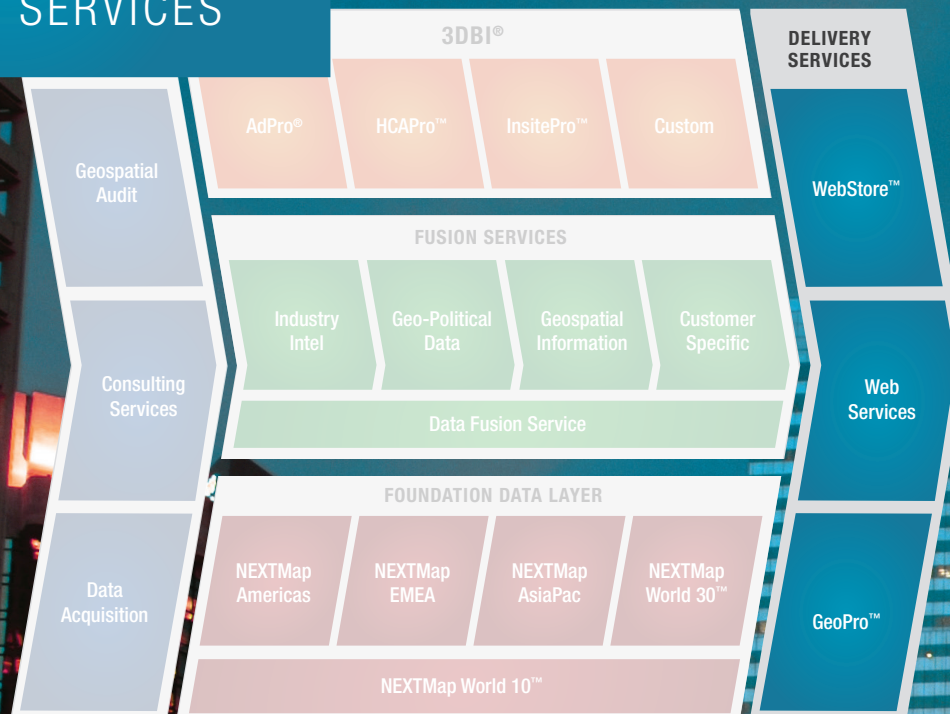


5/11/11
10 Vol

12/11/11 10:00 AM

LAYER
5

DELIVERY SERVICES





Intermap offers an array of delivery methods that match your needs. Our delivery services offer anything from unlimited access to millions of subscribers via the cloud, to a firewalled server available to only a few hundred people. Intermap also offers a secure hard drive which is available only to one person. The bottom line is that you tell us how you want your information shared, and we will design the best delivery solution that meets your needs.

DELIVERY SERVICES

» NEXTMAP WEBSTORE™

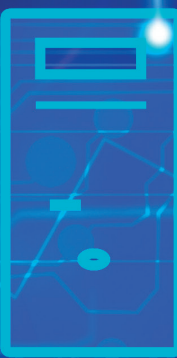
Intermap released the online NEXTMap WebStore to facilitate easier purchases. Customers simply login, access their desired area of interest, and quickly purchase for immediate download. You can also license and rebrand the Intermap WebStore for your own data delivery needs. New functionality includes:

Data Provisioning: Subscribers to Intermap Web Services receive regular data updates and can access their content using their current Web browser, through desktop software like ArcGIS, Global Mapper, SocetGXP, or via an application that leverages the Intermap Web Services software developers kit (SDK).

Metadata: Based on user feedback, customers can easily view data acquisition and publishing dates, and both the horizontal and vertical data. The full metadata fields can also be downloaded prior to purchase in either HTML or XML formats.

New Data Layers: Customers can gain quick access to the Intermap team for other available data layers, including custom contours, slope and aspect maps, 3D roads, hillshade images, road and trail networks, hydrology, coastlines, and data fusion services.

Streamlined Billing: Customers can choose from one-time or ongoing subscription access to Intermap's NEXTMap products, services, and tools from any location worldwide. Pricing information is available in USD, Euros, or Pounds, and notes or annotations can be added to any purchase receipts.



USE CASE NO. 17

A frequent user of the NEXTMap WebStore found it much easier to upload GIS boundary files and access superior 5-meter resolution DEMs faster than they can access the USGS NED 10-meter data. The accuracy and precision of the NEXTMap data allows them to leverage a much smaller investment than traditional LiDAR much earlier in the project.

DELIVERY SERVICES

» WEB SERVICES

Intermap's Web Services allow you to seamlessly integrate your Intermap solution into your existing geospatial infrastructure. With the click of a mouse the data you need is instantly available in your application via the Intermap cloud. With our Web Services data delivery offering, there's no need to store, manage, or backup the data yourself.





USE CASE NO. 18

Intermap's Web Services provide immediate access to our NEXTMap products through the industry's leading GIS software, including Global Mapper. Global Mapper users leverage a comprehensive set of analytic tools and an online data library that allows access via WMS/WCS to Intermap's most current data, which can then be combined with other worldwide datasets, depending on need. NEXTMap data is hosted in the cloud, eliminating the need to store, manage, or disseminate data thus saving time and money.

DELIVERY SERVICES

» GEOPRO™

Intermap understands your need to turn your data into actionable information. In response, we offer a solution in the form of GeoPro. GeoPro is a software application that simplifies the task of managing, transforming, and sharing geospatial data. It allows users to easily share individual or aggregated datasets via Open Geospatial Consortium (OGC) Web services inside or outside of their organization. GeoPro's intuitive and modern user interface is easy enough for the GIS novice yet powerful for the geospatial expert.

Additionally, GeoPro hosts Intermap 3DBI software and Web applications such as InsitePro, and provides a software development kit (SDK) so you can develop specialized applications and websites to answer unique questions. GeoPro's modern and intuitive user interface provides an environment suitable for all skill levels.

GeoPro Plus is an offering that includes a customer-selected set of Intermap's elevation data with a subscription to the GeoPro SaaS application. It delivers high quality elevation data in a simple-to-use Web-based app designed for geospatial management and sharing.

USE CASE NO. 19

An Asia Pacific government agency requested both products and services from Intermap that include a server capable of working within their agency's internal network. Intermap's deliverables include GeoPro and a firewalled server allowing authorized government users access to NEXTMap, risk layers, and administrative content (e.g. voting districts, demographics, etc.), all on a secure internal network via an intuitive user interface. This gave them peace of mind in secure access and it also allowed for collaboration amongst the various government teams needing to access key information to plan and mitigate for natural hazard impacts to the State.





FOCUS ON YOU, THE CUSTOMER

Intermap bursts from the gate with an extraordinary heritage of speed, responsiveness, and achievement.

By being customer-driven and market focused we have built some of the most scalable geospatial solutions in the world. Our strengths are speed, flexibility, and our people. The will to deliver is our edge.

How will Intermap continue to realize its solution vision?

By listening to you and by focusing on your needs.

Our goal is to become the leading provider of innovative geospatial solutions. One customer at a time.

In fact, hundreds of customers worldwide already realize that Intermap's ability to move, manage, and maintain geospatial information offers them a unique advantage. Working with our customers and partners, we will continue to pool our collective resources to achieve the unimaginable together.

Welcome to Intermap. We're glad you're here.

INTERMAP®

THE WORLD'S MOST COMPREHENSIVE LOCATION-BASED SOLUTIONS



» NOTES



A series of 20 horizontal lines for writing, evenly spaced across the page.



» NOTES



THE ORION PLATFORM®



INTERMAP®

THE WORLD'S MOST COMPREHENSIVE GEOSPATIAL SOLUTIONS

Intermap Technologies, Inc.
8310 S. Valley Highway, Suite 400
Englewood, CO 80112
Intermap.com