

System Requirements

- Windows XP, Vista, 7, 8 or later
- At least 512MB of RAM
- 260MB or greater of available disk storage
- CD-ROM drive or access to Internet

Editions

- 32-bit and 64-bit
- English, French, German, Italian and Spanish

Data Entry

- Keyboard entry in datasheet
- Copy and paste from Windows clipboard
- Import of files from other programs (Excel and 25 other formats)
- SQL queries using ODBC

Report Generation

- StatReporter and StatLog may be saved as RTF files
- Copy and paste to Microsoft Word, Powerpoint, Excel and other programs
- StatPublish saves results as HTML for access by web browsers

Technical Support

Statpoint and its dealers are dedicated to providing first-class technical support. Statgraphics.com contains a large number of instructional videos, how-to guides and recorded webinars. Our support specialists are also available by e-mail or phone and are highly knowledgeable about both Statgraphics and statistical methods.

Training

Statpoint Technologies, Inc. and its worldwide dealers conduct both public and on-site seminars covering the use of Statgraphics Centurion for statistical analysis. The seminars are appropriate for both new and advanced users.

Documentation

Statgraphics Centurion XVII comes with a 300-page User Guide which includes eight tutorials. 300 additional PDF documents describe each statistical procedure in detail, with sample data files and mathematical formulas. A context-sensitive help system can be used to search for specific topics or keywords. Statgraphics.com contains additional resources.

Validation

Before release of each new version, extensive tests are performed to ensure that the program operates properly. For users needing to validate the statistical results for regulatory agencies, we will be happy to cooperate in providing information about our software and development procedures.

How to Get Statgraphics

A trial copy of Statgraphics Centurion XVII can be downloaded from statgraphics.com. The trial copy is fully operational but expires after a limited number of days. You will also find an order form, on-line store and list of international dealers at that site.

Statpoint Technologies, Inc.
560 Broadview Avenue, Suite 201
Warrenton, Virginia 20186
© 2014

P: 1.800.232.7828 or 540.428.0084
F: 540.428.0089
info@statgraphics.com
statgraphics.com



Introducing the NEW STATGRAPHICS® Centurion XVII

Powerful, intuitive software tools for data analysis, data visualization, statistical modeling, and predictive analytics.

Statgraphics Version 17 is a comprehensive program for data visualization and predictive analytics. It contains over 230 procedures covering everything from summary statistics to advanced statistical models. Designed with the practitioner in mind, the program includes many features that make it easier than ever to extract the vital information from your data.

Statgraphics Centurion XVII contains over 230 procedures covering:

- Analysis of Variance
- Basic Statistical Methods
- Categorical Data Analysis
- Data Mining
- Design of Experiments
- Exploratory Data Analysis
- Life Data Analysis and Reliability
- Measurement Systems Analysis
- Multivariate Methods
- Nonparametric Methods
- Probability Distributions
- Process Capability Analysis
- Regression Analysis
- Sample Size Determination
- Six Sigma and Lean
- Statistical Process Control
- Time Series Analysis and Forecasting
- Visualization

statgraphics.com

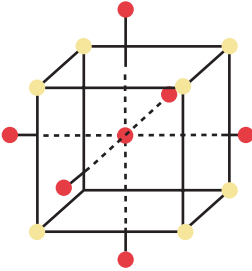
Statpoint Technologies, Inc. 560 Broadview Avenue, Suite 201 Warrenton, Virginia 20186
P: 1.800.232.7828 or 540.428.0084 • F: 540.428.0089 • info@statgraphics.com

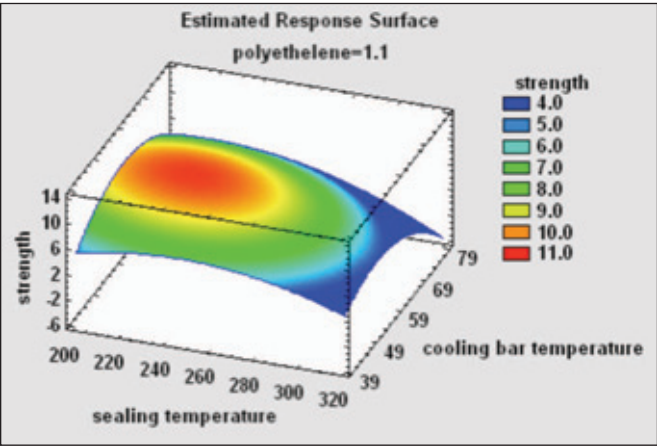
HIGHLIGHTS

Design of Experiments Wizard The DOE Wizard guides users through the construction and analysis of statistically designed experiments. Version 17 adds new computer-generated designs which automatically create runs to achieve A, D, G or I-optimality. The Response Surface Explorer lets users dynamically change the level of experimental factors to visualize the impact on the fitted process model.

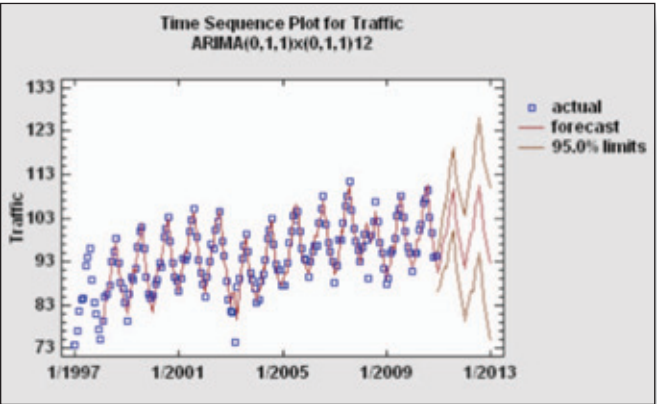
12-step process:

- Step 1: Define responses
- Step 2: Define experimental factors
- Step 3: Select design
- Step 4: Specify model
- Step 5: Select runs
- Step 6: Evaluate design
- Step 7: Save experiment
- Step 8: Analyze data
- Step 9: Optimize responses
- Step 10: Save results
- Step 11: Augment design
- Step 12: Extrapolate

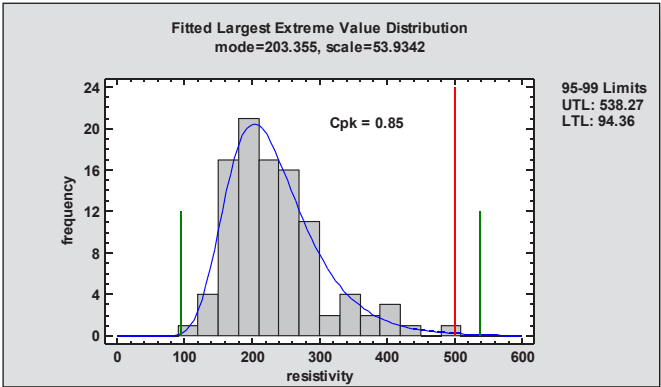




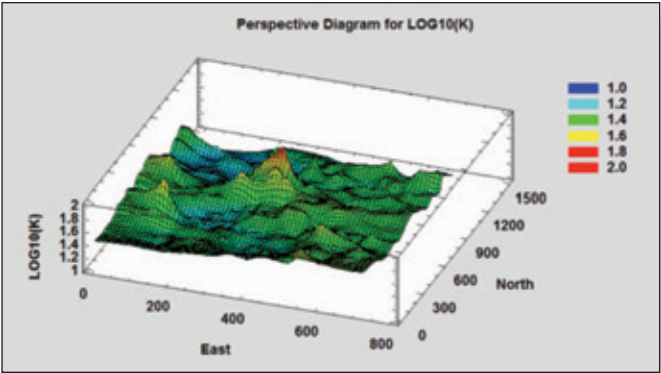
Automatic Time Series Forecasting Given a series of data collected over time, Statgraphics will automatically generate forecasts for future observations by comparing different types of models and selecting the best according to a specified criterion (such as the Akaike Information Criterion). The forecasts are plotted with prediction limits.



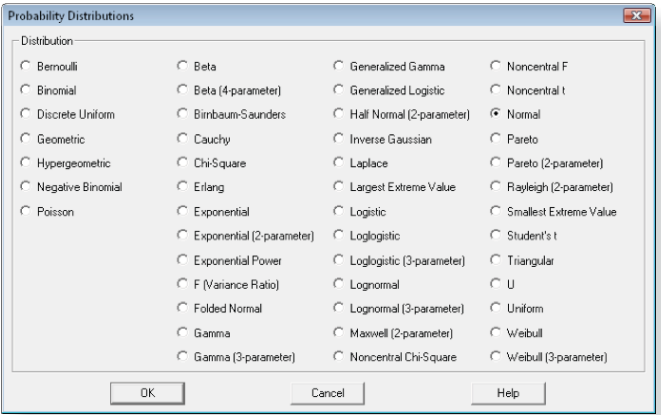
Tolerance Limits and Capability Indices The Statistical Process Control section of Statgraphics calculates statistical tolerance limits and process capability indices for data from many probability distributions.



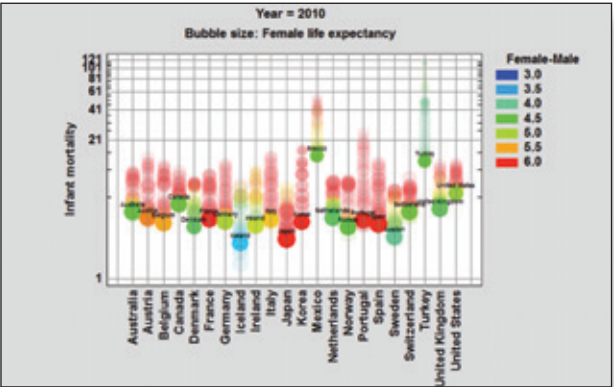
Statlets® Version 17 contains 19 new Statlets, which are graphical representations of data and statistical models that may be dynamically manipulated with controls on the Statlet toolbar. They let users visualize instantly the effect of changing analysis options and dramatically reduce the time required to develop an acceptable model.



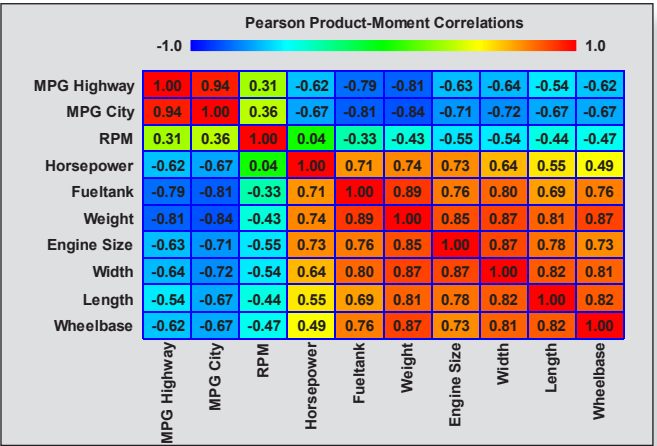
Probability Distribution Fitting Statgraphics can fit up to 45 different probability distributions to a set of data. The data may be censored or uncensored. Critical values and tail areas may be calculated from the fitted distributions, and sets of random numbers may be generated.



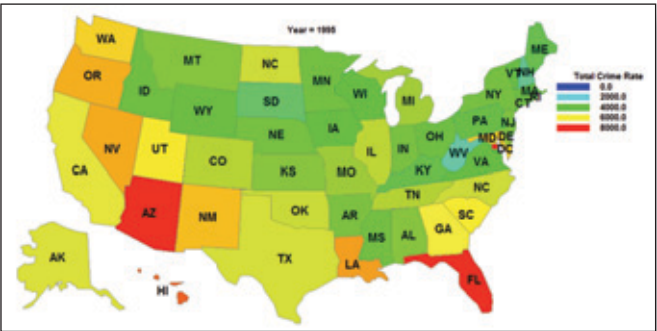
Data Visualization Statgraphics contains many methods for visualizing data. New in Version 17 are several dynamic Statlets used to visualize changes in multivariate time series. By manipulating the controls on the toolbar, changes over time may be viewed dynamically.



Multivariate Methods Statgraphics contains many methods for dealing with multivariate data, including principal components analysis, PLS, MANOVA, discriminant analysis and other advanced methods. Many of these tools are useful for data mining and analysis of big data. The program also contains many multivariate visualization tools, such as scatterplot matrices, parallel coordinate plots, multivariate glyphs, and corrgrams (new in Version 17).



Demographic Maps Regional statistics are often easiest to visualize when displayed on maps. Starting with Version 17, maps may be generated for any area defined by a BNA boundary file. For time series data, a demographic map visualizer Statlet lets the user interactively change the time period that is illustrated.



FEATURES

SnapStats SnapStats provide a quick way to produce a single page of preformatted output. They are available for many commonly used statistical analyses.

StatAdvisor The StatAdvisor generates a paragraph or two interpreting each table in your output. It explains the significance of your results in simple terms, yet precisely enough that the interpretations may be included in your reports.

StatFolios The StatFolio is the main Statgraphics document that records the state of your session, including a link to your data and all procedures and options that you have selected. StatFolios may be saved and recalled at a later date, or applied to multiple data sets.

StatGallery The StatGallery lets you take graphs generated in different procedures and arrange them side by side on a single page. You may also overlay one graph on top of another.

StatLink StatLink lets you link a StatFolio to one or more data sources. When the data change, the contents of the StatFolio is automatically updated.

StatLog The StatLog, new to Version 17, automatically records the operations you have performed and any output that you choose to include. Together with the StatFolio audit trail, it provides a permanent record of your analyses.

StatPublish StatPublish lets you publish your tables and graphs as HTML so that anyone with a web browser can quickly view your results.

StatReporter The StatReporter lets you create reports with Statgraphics by copying and pasting tables and graphs generated in the analysis windows. You may edit the output, add additional comments, and save the results as an RTF file.

StatWizard The StatWizard is a tool designed to help you select the proper analyses for your data. You begin by selecting the data to be analyzed. The StatWizard then suggests analyses appropriate for that type of data.

