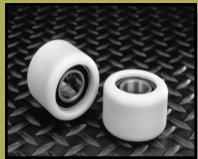


- Design World feature (Sept issue) on self-lubricating anti-backlash gear to replace pulley system in computer hard drive robotic manipulator.
- Intech Power-Core blog launched to update engineering world on new applications for Power-Core components.



POWER-CORE™ FEATURES

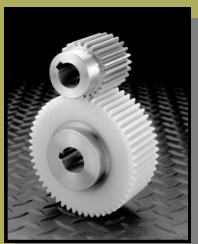
Long-wearing



Metal Core



Self-Lubricating



# Power-Core™ News

VOLUME 1, ISSUE 1

MARCH 2010

## iCamFollowers® Perform in Sub-Zero Temperatures

Our customers have been asking us to help them with components for machines that will operate in ever harsher conditions. Intech iCamFollowers® and Power-Core™ guide rollers feature a unique crystalline structure that is resistant to flow under static load, and provides long-wearing, non-lubricated performance. The devices do not wear out the rail, do not absorb moisture and, when fitted with stainless steel bearings, are suitable for wash downs and harsh and corrosive environments.

Unlike other plastic material, Power-Core™ does not become brittle in low temperatures. iCam Followers® and Power-Core guide rollers retain good bearing fit from -40° to 160° F, retaining

elasticity, and absorbing shock and vibration in sub-zero temperatures. The devices are not only quiet and easy rolling, they



**Intech Power-Core™ Guide Rollers and Cam Followers® perform under the toughest conditions**

do not require lubricating and do not generate metal particles, an important requirement for clean rooms.

Intech Power-Core rollers, cam followers, and trolleys are assembled from precision machined high performance, self lubricating engineered plastic tires and quality roller bearings. The plastic part of the roller fully envelopes and embraces the bearing outer racer which in turn provides high capacity to carry side loads.

The Power-Core rollers and iCamFollowers® are available in stock sizes with load capacity from 60 to 500 lbs. Trolley assemblies feature aluminum track and trolley systems with attachments. Custom sizes and dimensions and tire shapes can be developed to meet specific applications. Call Boyka Kriakova for a complimentary consultation. Tel. 201-767-8066 x305

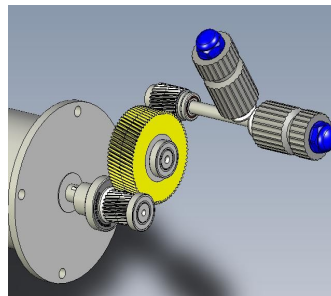
## Power-Core™ Gears Replace Belt Drive in a Food Processing Machine

### -Satisfying Strict Hygiene Requirements

We have been working with a food processing machine manufacturer to replace a belt drive to eliminate frequent down times in their frozen vegetable product slicing machine. Intech designed a self-lubricating, low inertia helical gear drive especially focusing on the strict hygiene and longer wear life. Of special concern to the customer was the gear's resistance to frequent wash

downs as well as potential bacteria build up in the keyway.

Power-Core™ gears with



stainless steel core have proven their resistance to wash downs in many applications, and to eliminate the keyway, Intech designed a tri-lobular shaft attachment. Using Intech's proprietary plastic gear calculation, we designed the gear and tooth geometry to fit the fixed center distance of the existing machine and calculated a gear life of at least 12,000 hours continuous use. Call Tody Mihov on x301 to learn more.

