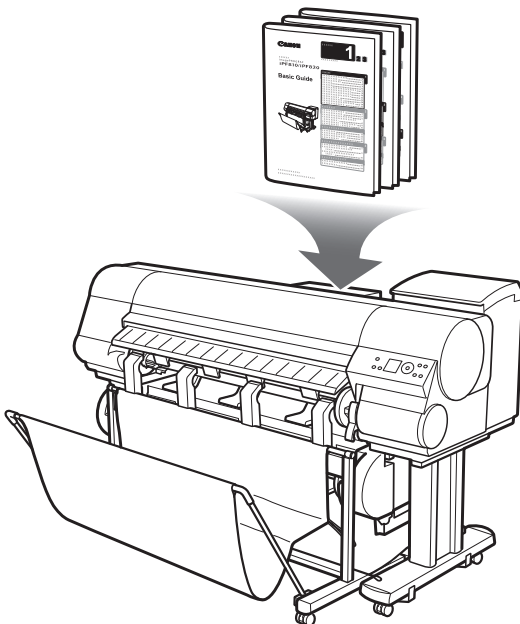


# Canon

Large-Format Printers  
imagePROGRAF  
iPF815/iPF825

## Basic Guide



### Printer Operations

# 1

# 2 3

This Basic Guide includes three booklets.  
Read this manual first.

### Printer Operations

# 1

▲ Safety Precautions .....	2
Types of Manuals .....	5
Documentation Conventions .....	6
Parts .....	8
Attaching the Roll Holder to Rolls .....	12
Loading Rolls in the Printer .....	14
Removing the Roll from the Printer .....	18
Loading Sheets in the Printer .....	22
Removing Sheets .....	24
Consumables .....	25
Replacing Ink Tanks .....	26
Replacing the Maintenance Cartridge .....	32
Replacing the Printhead .....	37
Menu Map .....	42

### Troubleshooting

# 2

Troubleshooting .....	2
If Roll Paper Jams .....	18
If a Sheet Jams .....	21
If Paper is Soiled .....	23
If Printing is Faint .....	25
If Vertical Lines are Warped or Colors are Misaligned .....	26
If Banding Occurs .....	28
If Line Length Does Not Match .....	30
Error Messages .....	32

### Printer Relocation

# 3

Preparing to Transfer the Printer .....	2
Reinstalling the Printer .....	8

### Printer Driver Installation

Installing the Printer Driver (Windows) .....	12
Installing the Printer Driver (Mac OS X) .....	14
Convenient Printer Driver Features .....	16

Read this manual before attempting to operate the printer.  
Keep this manual in a handy location for future referencing.

ENG

# Safety Precautions

Follow the warnings and precautions below to use the printer safely. Do not perform any operations or procedures other than as described in this manual. Doing so may result in unexpected accidents and can cause a fire or electrical shocks.

## Warning

### Printer location



- Do not set up the printer in any location exposed to alcohol, thinner, or other volatile liquids. If these substances come into contact with electrical components inside the printer, there is a risk of fire or electrical shock.

### Power Supply



- Never handle the power cable with wet hands. Doing so may cause electrical shock.



- Insert the power cable securely and completely into the power source. If the power cable is not inserted completely, this could cause a fire or electrical shock.



- Do not use any power cable other than the one provided. This could cause a fire or electrical shock. Never use the power cable with any other electrical device.



- Never cut the power cable or attempt to modify it, and never stretch it or bend it forcefully. Never place a heavy object on the power cable. Damaged sections of the power cable could cause a short circuit and may cause a fire or electrical shock.



- Never connect the power cable to a power strip or any power source shared by other electrical devices. This could cause a fire or electrical shock.



- Never knot the power cable or wrap it around itself. This could cause a fire or electrical shock.



- Periodically disconnect the power cable and use a dry cloth to wipe away dust that has collected on the plug and the area around the power outlet. Leaving the power cable plugged in and not cleaned for a long period, especially in an area subject to dust, oil, and humidity, could cause the insulation material to deteriorate and lead to a fire.

### In an Emergency



- If the printer emits smoke or strange odors, continuing to use the printer may cause a fire or electrical shock. Switch the printer off immediately and remove the power plug from the power outlet. Contact the nearest service center.

### Cleaning the Printer



- For cleaning, use a cloth dampened in water. Never use flammable solvents such as alcohol, benzene, or thinner. If these substances come into contact with electrical components inside the printer, there is a risk of fire or electrical shock.

### Pacemakers

- This printer generates a low-level magnetic field. Anyone wearing a pacemaker who experiences discomfort while working around the printer should leave the area. Consult a physician before continuing to work around the printer.

## Caution

### Printer location



- Never install the printer on an unstable or vibrating surface. If it falls over, this could cause personal injury.



- Never set up the printer in a location that is exposed to high humidity or large amounts of dust, or exposed to direct sunlight, high temperature, or open flame. This could cause a fire or electrical shock. Use the printer location in an environment where temperature and humidity are within the ranges of 15 °C to 30 °C (59 °F to 86 °F) and 10 to 80% RH (with no condensation).



- Never place the printer on a heavy wool or shag carpet. The fibers may enter the printer and cause a fire.



- Keep the area around the power outlet clear of items so that you can disconnect the power cable immediately if the printer starts operating abnormally. In the event of a printer malfunction, remove the power cable from the outlet as soon as possible to prevent fire and electrical shocks.



- Do not install the printer near sources of strong electromagnetic fields, whether equipment that generates such fields or places where such fields occur. This could damage the printer or cause malfunction.

### Moving the Printer



- The weights of main printer units are as follows:  
iPF815/iPF825: Approx. 112 kg (246.9 lb)

- Moving the printer requires at least six people, one person on each side of the unit. Be careful to avoid back strain and other injuries.



- When moving the printer, firmly grasp the **Carrying Handles** located on the bottom surface at both sides. Holding the printer at other positions is dangerous and poses a risk of injury and damage if the printer is dropped.

### Power Supply



- Always grip the plug to remove the power cable from the power outlet. Pulling on the power cable could damage the cable and lead to a fire or electrical shock.



- Never use an extension cord. This could cause a fire or electrical shock.



- Never use any power source other than 100–120 / 220–240 V AC. This could cause a fire or electrical shock. The printer operating conditions are described below. Use the printer under the following conditions.

Power supply voltage: 100–120 / 220–240 V AC

Power supply frequency: 50/60 Hz

### Cleaning the Printer



- Always disconnect the power cable from the outlet before cleaning the printer. If the printer is switched on accidentally, moving parts inside the printer may cause personal injuries.

### Printhead, Ink Tanks and Maintenance Cartridge



- Always store consumables in a safe location out of the reach of small children. If a child licks or ingests ink accidentally, seek medical assistance immediately.



- Avoid dropping or shaking Printheads, Ink Tanks, and Maintenance Cartridges. Spilled ink can stain clothing and the work area.



- Never touch the electrical contacts of the Printhead after printing. The contacts become extremely hot and can cause minor burns.

## ▲ Safety Precautions

### Other



- Never disassemble the printer or attempt repairs. There are high voltage parts inside the printer that can cause a fire or electrical shock.



- Never use flammable sprays around the printer. The gas of flammable sprays can cause a fire or electrical shock, if it contacts high voltage points inside the printer.



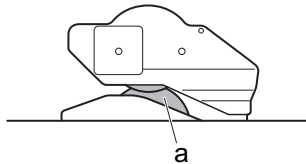
- Never insert your hand into the printer while it is printing. Moving parts inside the printer can cause injuries.



- Never place anything on the printer such as small metal objects (paper clips, staples), liquids, any type of liquid container that contains flammable liquids (alcohol, benzene, etc.). If such objects fall into the printer, this could cause a fire or electrical shock.



- Do not touch the blade (a) of the **Cutter Unit**. This could cause personal injury.



- To prevent a fire hazard or dangerous electric shock, if a foreign object falls into or a liquid spills into the printer, press the Power button immediately to switch the printer off, unplug the printer power cable from the outlet, and then call for service. If you continue to use the printer, this could cause a fire or electrical shock.

- Connect the interface cable correctly. To avoid damage, before connection make sure that the shape of the cable connector matches the connection point on the printer.



- During printing, turn on the ventilation system in the room.



- We recommend ensuring ample space for installation.

## Trademarks

Canon, the Canon logo, and imagePROGRAF are trademarks or registered trademarks of CANON INC.

Microsoft and Windows are trademarks of Microsoft Corporation, registered in the U.S. and other countries.

Macintosh is trademark of Apple Inc., registered in the U.S. and other countries.

Other company and product names in this guide are trademarks or registered trademarks of their respective owners.

## Legal Notice

- It is illegal to reproduce currency, bills, negotiable securities and other documents prohibited by law. Reproduction of such items may be subject to criminal prosecution.
- It is illegal to reproduce legal certificates, licenses, travel tickets, and certain public and private documents prohibited from reproduction by law. Reproduction of such items may be subject to criminal prosecution.
- Please note that intellectual property protected by copyright may not be reproduced without the express permission of the copyright holder except for personal or household use under limited circumstances.

# Types of Manuals

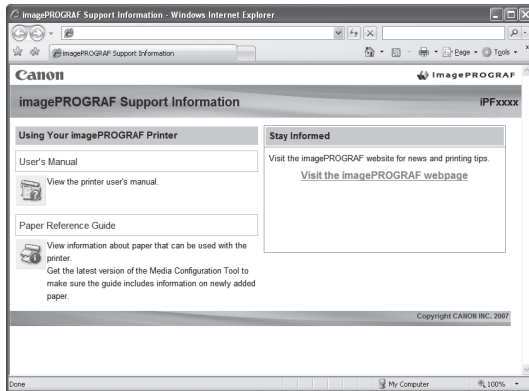
## Types of manuals

Title	Details
Setup Guide	Instructions for unpacking and setting up the printer, and for installing the printer driver
Basic Guide 1 (this manual) Printer Operations	Descriptions of basic printer operations
Basic Guide 2 Troubleshooting	Troubleshooting tips
Basic Guide 3 Printer Relocation / Printer Driver Installation	Instructions for preparing to relocate the printer and for software installation
User Manual (electronic manual)	Detailed instructions for using the printer
Paper Reference Guide (electronic manual)	Information on paper you can use with the printer

## Accessing the electronic manuals



The electronic manuals are accessible from imagePROGRAF Support Information.

Besides the electronic manuals, you can also access the imagePROGRAF website from imagePROGRAF Support Information.



- **User Manual**  
The User Manual gives detailed operating instructions for the printer, as well as troubleshooting tips in case of printing issues.
- **Paper Reference Guide**  
The Paper Reference Guide identifies the types of paper you can use with the printer and gives specifications.
- **Stay Informed**  
Provides access to the imagePROGRAF website, where you can find news on a variety of printing topics and tips on getting the most from your printer.




Access imagePROGRAF Support Information as follows.

<b>Windows</b> Double-click the <b>iPFxxxx Support</b> desktop icon. (xxxx indicates the printer model.)	 iPFxxxx Support
<b>Mac OS X</b> Click the <b>iPF Support</b> icon in the Dock.	

# Documentation Conventions

## Symbols

The following symbols are used in the documentation to indicate safety information and explanations of restrictions or precautions in use.

	Caution	Indicates caution items for which operating error poses a risk of injury or damage to equipment or property. To ensure safe use, always follow these precautions.
	Important	Indicates important information that must be followed when using the printer. Be sure to read this information to prevent printer damage or operating errors.
	MEMO	Indicates helpful reference information and supplemental information on particular topics.

## Cross-reference

Additional sources of information are identified as follows in the documentation.

In the Basic Guides: (Guide number and section title)	(→ <b>1</b> , section title) (→ <b>2</b> , section title) (→ <b>3</b> , section title)
In the User Manual:	(→ "section title," User Manual)

## Text conventions and illustrations

### Button names and user interface elements

Key and button names on the control panel and user interface elements in software (such as menus and buttons) are indicated as follows in the documentation.

Control panel buttons	Example: Press the <b>OK</b> button.
Control panel messages	Example: <b>Head Cleaning</b> is displayed.
Software interface items (Menus and Buttons)	Example: Click <b>OK</b> .
Keyboard keys	Example: Press the <b>Tab</b> key.

### Part names

Names of printer parts are indicated as follows in the documentation.

Printer part names	Example: Open the <b>Top Cover</b> .
--------------------	--------------------------------------

### Figures and software screens

- Instructions that apply to both the iPF815 and iPF825 are given with figures depicting the iPF815. Illustrations may therefore look different from the appearance of your printer in some cases, but basic operations are the same.
- Screens depicted in the documentation for the printer driver or other software may look different from the actual screens because of subsequent updates.
- Windows XP screens are used in explanations of Windows operations.

## FCC Regulations (U.S.A)

---

Canon Large Format Printer	iPF815	iPF825
----------------------------	--------	--------

This device complies with Part 15 of the FCC Rules. Operation is subject to the following two conditions: (1) This device may not cause harmful interference, and (2) this device must accept any interference received, including interference that may cause undesired operation.

Note: This equipment has been tested and found to comply with the limits for class B digital device, pursuant to Part 15 of the FCC Rules. These limits are designed to provide reasonable protection against harmful interference in a residential installation.

This equipment generates, uses and can radiate radio frequency energy and, if not installed and used in accordance with the instructions, may cause harmful interference to radio communications.

However, there is no guarantee that interference will not occur in a particular installation. If this equipment does cause harmful interference to radio or television reception, which can be determined by turning the equipment off and on, the user is encouraged to try to correct the interference by one or more of the following measures:

- Reorient or relocate the receiving antenna.
- Increase the separation between the equipment and receiver.
- Connect the equipment into an outlet on a circuit different from that to which the receiver is connected.
- Consult the dealer or an experienced radio/TV technician for help.

Use of shielded cable is required to comply with Class B limits in Subpart B of Part 15 of FCC Rules.

Do not make any changes or modifications to the equipment unless otherwise specified in the manual.

If such changes or modifications should be made, you could be required to stop operation of the equipment.

Canon U.S.A. Inc.

One Canon Plaza, Lake Success, NY 11042, U.S.A.

Tel No. 516-328-5600

## For CA, USA Only

---

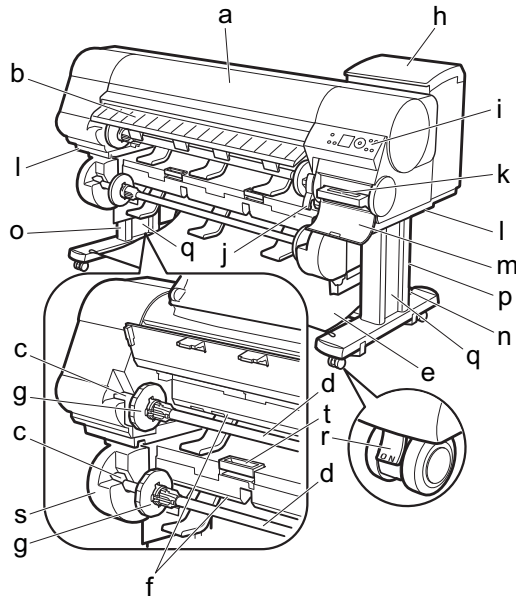
Included battery contains Perchlorate Material - special handling may apply.

See <http://www.dtsc.ca.gov/hazardouswaste/perchlorate/> for detail.

# Parts

Names and functions of printer parts are as follows.

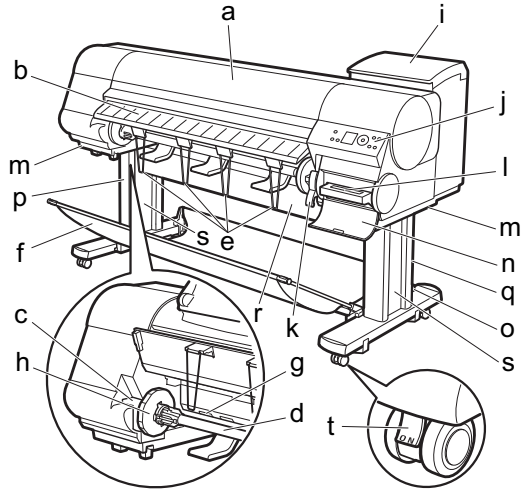
## iPF825



	Name	Operation
a	<b>Top Cover</b>	Open this cover to install the Printhead, load paper, and remove any jammed paper from inside the printer as needed.
b	<b>Ejection Guide</b>	Guides printed documents as they are ejected. Open this guide when loading a roll.
c	<b>Roll Holder Slot</b>	Slide the <b>Roll Holder</b> into this slot.
d	<b>Roll Holder</b>	Load the roll on this holder.
e	<b>Protective Cloth for Sheets</b>	A cloth tray that catches ejected sheets.
f	<b>Paper Feed Slot</b>	When loading a roll, insert the edge of the roll paper here. You can load rolls in two positions, on the printer side in the <b>Roll 1 (Upper)</b> position and on the roll unit side in the <b>Roll 2 (Lower)</b> position.
g	<b>Holder Stopper</b>	Secure rolls on the <b>Roll Holder</b> with this part.
h	<b>Ink Tank Cover</b>	Open this cover to replace an Ink Tank.
i	<b>Control Panel</b>	Use this panel to operate the printer and check the printer status.
j	<b>Release Lever</b>	Releases the <b>Paper Retainer</b> . Lift this lever toward the front of the printer when loading paper.
k	Maintenance Cartridge	Absorbs ink used for maintenance purposes such as head cleaning. (Replace the cartridge when it is full.)
l	<b>Carrying Handles</b>	When carrying the printer, have six people hold it by these handles under both sides.
m	<b>Maintenance Cartridge Cover</b>	Open this cover to replace the Maintenance Cartridge.
n	<b>Stand</b>	A stand that holds the printer. Equipped with casters to facilitate moving it.
o	<b>Stand L</b>	The left leg of the <b>Stand</b> .
p	<b>Stand R</b>	The right leg of the <b>Stand</b> .
q	<b>Leg Covers</b>	Covers for <b>Stand L</b> and <b>Stand R</b> .
r	<b>Stopper</b>	Locks the <b>Stand</b> casters. Always release the <b>Stopper</b> before moving the printer. Moving the printer while the <b>Stopper</b> is locked may scratch the casters or the floor.
s	<b>Roll Unit</b>	A unit for loading a second roll.
t	<b>Roll Unit Lever</b>	Hold this lever to pull out the <b>Roll Unit</b> .

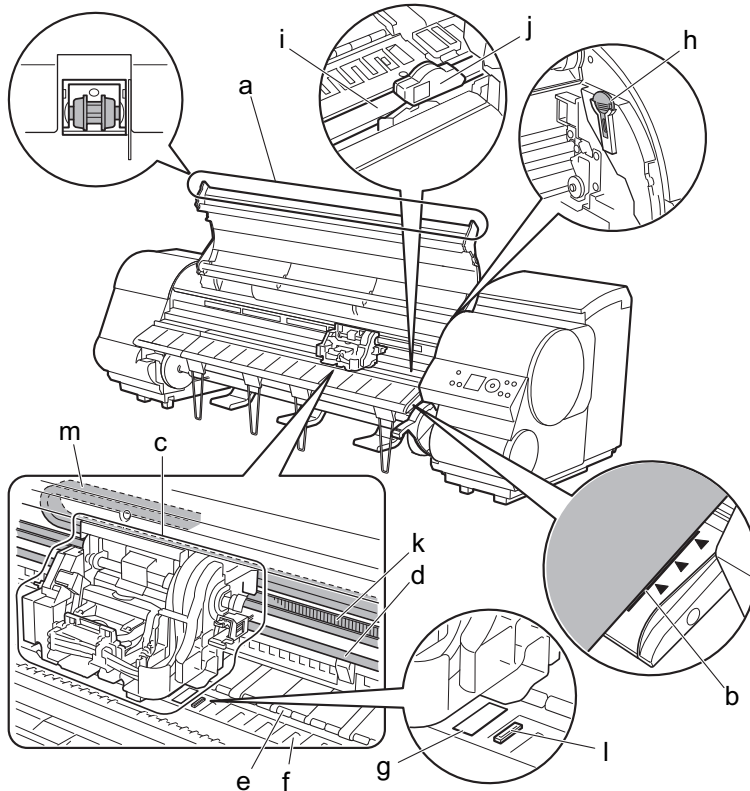


## iPF815



	Name	Operation
a	<b>Top Cover</b>	Open this cover to install the Printhead, load paper, and remove any jammed paper from inside the printer as needed.
b	<b>Ejection Guide</b>	Guides printed documents as they are ejected. Open this guide when loading a roll.
c	<b>Roll Holder Slot</b>	Slide the <b>Roll Holder</b> into this slot.
d	<b>Roll Holder</b>	Load the roll on this holder.
e	<b>Ejection Support</b>	Prevents printed documents from winding around the <b>Roll Holder</b> or being drawn into the <b>Paper Feed Slot</b> .
f	<b>Stationary Output Stacker</b>	A cloth tray that catches ejected documents.
g	<b>Paper Feed Slot</b>	When loading a roll, insert the edge of the roll paper here.
h	<b>Holder Stopper</b>	Secure rolls on the <b>Roll Holder</b> with this part.
i	<b>Ink Tank Cover</b>	Open this cover to replace an Ink Tank.
j	<b>Control Panel</b>	Use this panel to operate the printer and check the printer status.
k	<b>Release Lever</b>	Releases the <b>Paper Retainer</b> . Lift this lever toward the front of the printer when loading paper.
l	Maintenance Cartridge	Absorbs ink used for maintenance purposes such as head cleaning. (Replace the cartridge when it is full.)
m	<b>Carrying Handles</b>	When carrying the printer, have six people hold it by these handles under both sides.
n	<b>Maintenance Cartridge Cover</b>	Open this cover to replace the Maintenance Cartridge.
o	<b>Stand</b>	A stand that holds the printer. Equipped with casters to facilitate moving it.
p	<b>Stand L</b>	The left leg of the <b>Stand</b> .
q	<b>Stand R</b>	The right leg of the <b>Stand</b> .
r	<b>Top Stand Stay</b>	Supports <b>Stand L</b> and <b>Stand R</b> . Attach the optional <b>Media Take-up Unit</b> to this part.
s	<b>Leg Covers</b>	Covers for <b>Stand L</b> and <b>Stand R</b> .
t	<b>Stopper</b>	Locks the <b>Stand</b> casters. Always release the <b>Stopper</b> before moving the printer. Moving the printer while the <b>Stopper</b> is locked may scratch the casters or the floor.

## Top Cover (Inside)



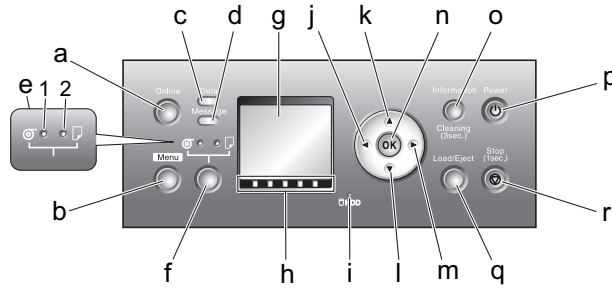
	Name	Operation
a	<b>Top Cover Roller</b>	Prevents paper from rising when ejected.
b	<b>Paper Alignment Line</b>	Align paper with this line when loading it.
c	<b>Carriage</b>	Moves the Printhead. The carriage serves a key role in printing.
d	<b>Carriage Shaft</b>	The <b>Carriage</b> slides along this shaft.
e	<b>Paper Retainer</b>	Important in supplying the paper. This retainer holds paper as it is fed.
f	<b>Platen</b>	The Printhead moves across the platen to print. <b>Vacuum holes</b> on the platen hold paper in place.
g	<b>Borderless Printing Ink Grooves</b>	For catching ink outside the edges of paper during borderless printing.
h	<b>Cleaning Brush</b>	When cleaning inside the printer under the <b>Top Cover</b> , use this brush to sweep away paper dust on the <b>Platen</b> . Also use the brush to move the blue <b>Switch</b> on the <b>Platen</b> .
i	<b>Cutter Rail</b>	The <b>Cutter Unit</b> passes over this rail to cut paper.
j	<b>Cutter Unit</b>	A round-bladed cutter for automatic paper cutting.
k	<b>Linear Scale</b>	The linear scale serves a key role in detecting the <b>Carriage</b> position. Be careful not to touch this part when cleaning inside the <b>Top Cover</b> or clearing paper jams.
l	<b>Switch</b>	Set the switch to the ● side before borderless printing.
m	<b>Ink Tube Stabilizer</b>	Holds ink tubes securely.




Important

• Do not touch the **Linear Scale (k)**, **Carriage Shaft (d)**, or **Ink Tube Stabilizer (m)**. Touching these parts may damage them.

## Control Panel

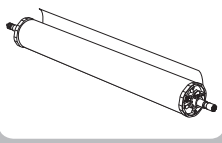


	Name	Operation
a	<b>Online Button</b> (Green)	Switches the printer online and offline.
b	<b>Menu Button</b>	Displays the main menu of the printer. (→  , Menu Map)
c	<b>Data lamp</b> (Green)	Indicates the status of print jobs or the printer firmware.
d	<b>Message lamp</b> (Orange)	Lit or flashes when messages are displayed.
e	<b>Paper Source Section</b>	After you press the <b>Feeder Selection</b> button, the lamp for your chosen paper source is lit. 1. <b>Roll Media lamp</b> (Green) 2. <b>Cut Sheet lamp</b> (Green)
f	<b>Feeder Selection</b> Button	Switches the paper source. Each time you press this button, the paper source switches between the roll and the sheet, and the corresponding lamp on the <b>Paper Source Section</b> is lit.
g	<b>Display Screen</b>	Shows the printer menu, as well as the printer status and messages.
h	<b>Color Label</b>	These labels indicate the Ink Tank colors. The labels correspond to the ink levels on the <b>Display Screen</b> .
i	<b>HDD lamp</b> (Green)	Lit when the printer is accessing the hard disk.
j	<b>◀ Button</b>	Menu mode: Press this button to display the menu one level higher.
k	<b>▲ Button</b>	Offline: Press this button to rewind rolls manually. Menu mode: Press this button to display the previous menu item or setting value.
l	<b>▼ Button</b>	Offline mode: Press this button to feed the roll manually in the direction of ejection, as needed. Menu mode: Press this button to display the next menu item or setting value.
m	<b>▶ Button</b>	Menu mode: Press this button to display the menu one level lower.
n	<b>OK Button</b>	In Menu mode, press this button to confirm or execute the selected item or setting. Also press this button if the <b>Display Screen</b> indicates to press the <b>OK</b> button.
o	<b>Information Button</b>	Displays printer submenus. Press this button to display information about ink, paper, and so on. You can also hold down this button for three seconds to clean the Printhead ( <b>Head Cleaning A</b> ).
p	<b>Power Button</b>	Turns the printer on and off.
q	<b>Load/Eject Button</b>	By pressing this button, you can check instructions on loading and removing paper. Instructions for loading paper are shown on the <b>Display Screen</b> if pressed when no paper is loaded, and instructions for removing paper are shown if paper is loaded.
r	<b>Stop Button</b>	Hold down for at least a second to cancel print jobs in progress or end the ink drying period.



MEMO

- When the printer is in Sleep mode, you can press any button except the **Power** button to bring the printer online again.



# Attaching the Roll Holder to Rolls

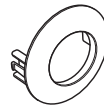
Attach the roll holder to rolls as follows.

When printing on rolls, attach the **Roll Holder** to the roll.

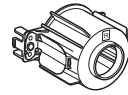
Rolls have a two- or three-inch paper core. Use the correct attachment for the paper core. The printer comes equipped with the **2-Inch Paper Core Attachment** installed.

## Paper to Prepare

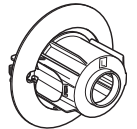
- Using the 2-Inch Paper Core Attachment **2-Inch Paper Core Attachment (a)**
- Using the 3-Inch Paper Core Attachment **3-Inch Paper Core Attachment #1 (b)**
- **3-Inch Paper Core Attachment #2 (c)**



(a)



(b)



(c)

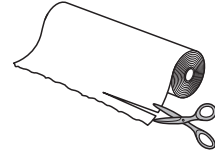


- Set the roll on a table or other flat surface so that it does not roll or fall. Rolls are heavy, and dropping a roll may cause injury.

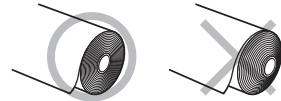


Important

- Cut the edge of the roll paper if it is uneven, dirty, or has tape residue. Otherwise, it may cause feeding problems and affect the printing quality. Be careful not to cut through any barcodes printed on the roll.



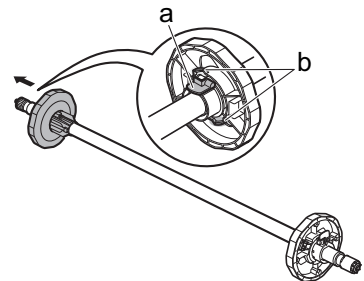
- Align the edges of the paper on both ends of the roll.



- For details on supported sizes and types of rolls, see "Paper Sizes" or the Paper Reference Guide. (→"Paper Sizes," User Manual)
- (→"Types of Paper," User Manual)
- After pressing the **Load/Eject** button, you can refer to instructions on the **Display Screen** as you load the paper.

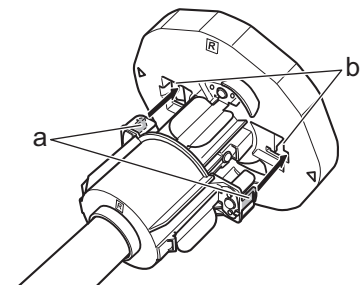
# 1

Lift the **Holder Stopper** lever (a) from the shaft side to unlock it. Holding the **Holder Stopper** at the position indicated (b), remove it from the **Roll Holder**.

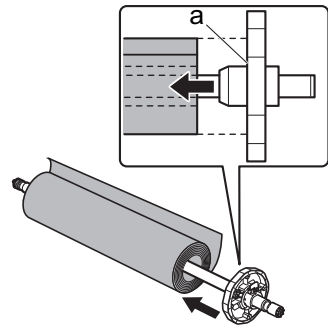



# 2

When using a 3-inch paper core, align the tips (a) of **3-Inch Paper Core Attachment #1** with the holes (b) of the **Roll Holder** and insert it firmly.



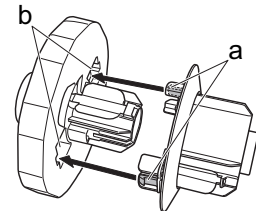
- 3** With the edge of the roll paper facing forward as shown, insert the **Roll Holder** from the right of the roll. Insert it firmly until the roll touches the flange (a) of the **Roll Holder**.



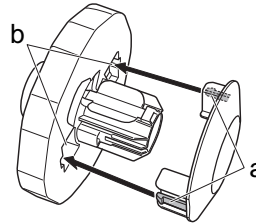
 • When loading a roll, be careful to avoid hitting the printer hard with the roll. This may damage the **Roll Holder**.

- 4** Insert the attachments for the roll paper core on the **Holder Stopper**. Align the tips (a) of the attachment with the holes (b) of the **Holder Stopper** and insert it firmly.

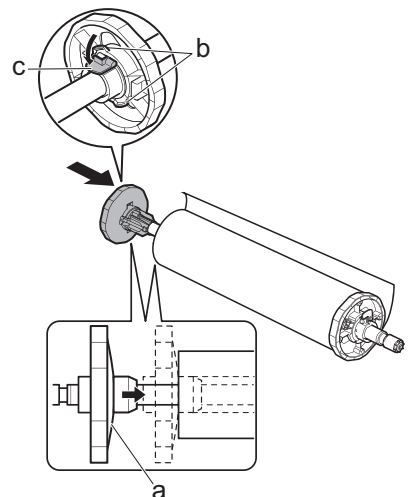
• **3-Inch Paper Core Attachment #2**

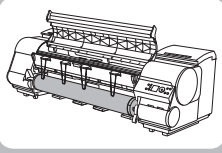


• **2-Inch Paper Core Attachment**



- 5** Insert the **Holder Stopper** from the left in the **Roll Holder** as shown. Holding it at the position shown (b), push it firmly in until the flange (a) of the **Holder Stopper** touches the roll. Lock the **Holder Stopper** lever (c) by pushing it down toward the shaft side.





# Loading Rolls in the Printer

Load rolls in the printer as follows.

You can load rolls in two positions, in the **Roll 1 (Upper)** and **Roll 2 (Lower)** holders. (iPF825 only)



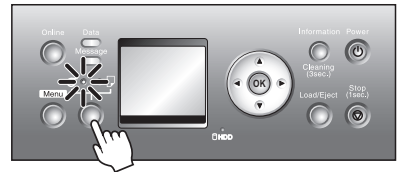
MEMO

- Remove any loaded paper that will not be used.
  - Rolls: (→ **1**, Removing the Roll from the Printer)
  - Sheets: (→ **1**, Removing Sheets)
- If the **Wheeled Output Stacker** is installed, remove it in advance. (→ "Using the Wheeled Output Stacker," User Manual)
- If the **Platen** is dirty, clean inside the **Top Cover**. (→ **2**, If Paper is Soiled)
- After pressing the **Load/Eject** button, you can refer to instructions on the **Display Screen** as you load the paper. (→ "Checking Instructions During Printer Operations," User Manual)

## Load a roll in the printer (iPF825: in the Roll 1 (Upper) position)

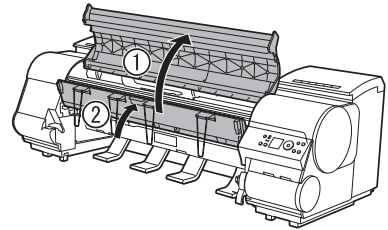
# 1

Confirm that a roll is selected as the paper source.  
(→ "Selecting the Paper Source," User Manual)



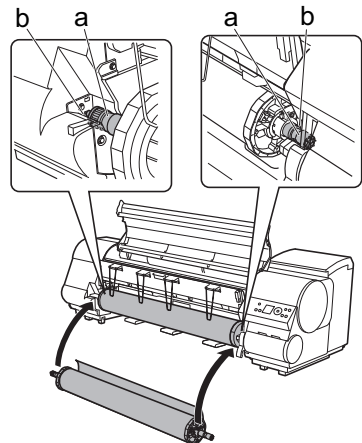
# 2

Open the **Top Cover** and lift the **Ejection Guide**.



# 3

Holding the **Roll Holder** so that the side with the white gear faces the side of the **Roll Holder Slot** with a white gear, load the **Roll Holder** shaft (a) into the grooves (b) on both ends of the **Roll Holder Slot**.



Caution

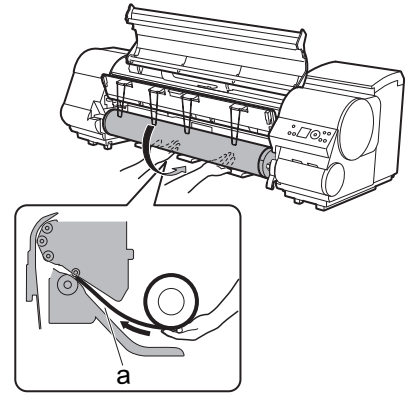
- Be careful not to pinch your fingers between the **Roll Holder** shaft (a) and the guide grooves (b) when loading rolls.



MEMO

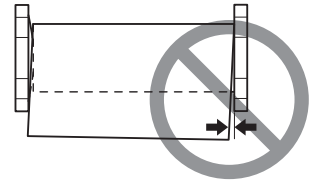
- See the following procedure for instructions on attaching the **Roll Holder** to the roll.  
(→ **1**, Attaching the Roll Holder to Rolls)

- 4** Using both hands, pull out the roll evenly on both ends and insert it in the **Paper Feed Slot** (a). Advance the roll until the buzzer sounds.

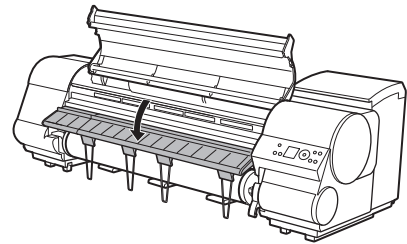


Important

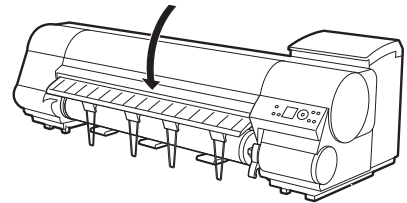
- Be careful not to soil the printing surface of roll paper as you pull it out. This may affect the printing quality. We recommend wearing clean cloth gloves when handling rolls to protect the printing surface.
- If the paper is wrinkled or warped, straighten it out before loading it.
- Load the roll so that there is no gap between the right edge of the paper and the **Roll Holder**.



- 5** Lower the **Ejection Guide**.



- 6** Close the **Top Cover**.



- 7** Press the **OK** button.  
The paper is now advanced.

After you load a roll, the printer automatically shows a menu for selection of the type of paper on the **Display Screen**.

At this point, specify the type of paper. (→"Selecting the Paper Type (Roll)," User Manual)

## Load a roll in the Roll 2 (Lower) position (iPF825 only)

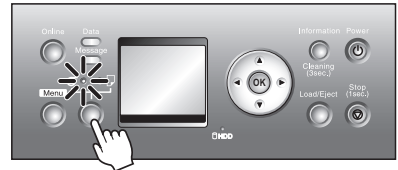


Important

- Do not detach the **Roll Unit** in the following cases.
  - During printing  
Vibration from removing the **Roll Unit** may affect the printing quality.
  - If a sheet is loaded in the printer  
The sheet may be ejected, and (rarely) it may be bent.

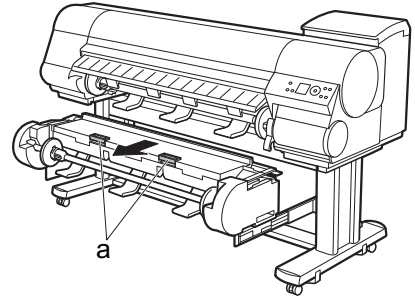
1

Confirm that a roll is selected as the paper source.  
(→"Selecting the Paper Source," User Manual)



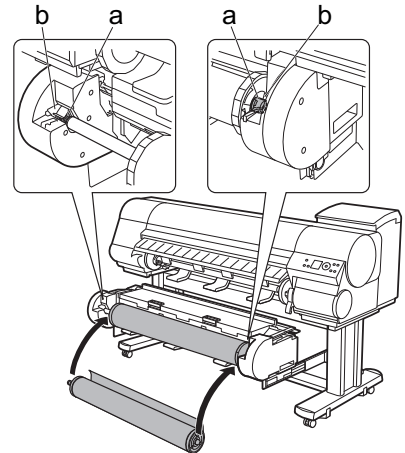
2

Holding the **Roll Unit Lever** (a), pull out the **Roll Unit**.



3

Holding the **Roll Holder** so that the side with the white gear faces the side of the **Roll Holder Slot** with a white gear, load the **Roll Holder shaft** (a) into the grooves (b) on both ends of the **Roll Holder Slot**.



Caution

- Be careful not to pinch your fingers between the **Roll Holder shaft** (a) and the guide grooves (b) when loading rolls.

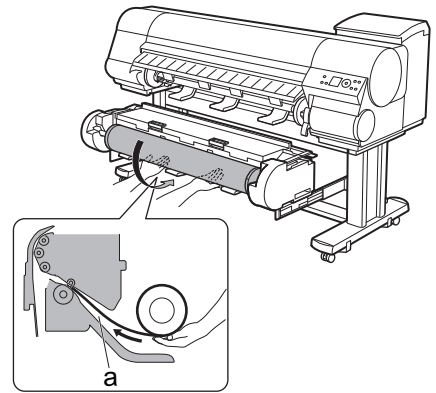


MEMO

- See the following procedure for instructions on attaching the **Roll Holder** to the roll.  
(→ **1**, Attaching the Roll Holder to Rolls)

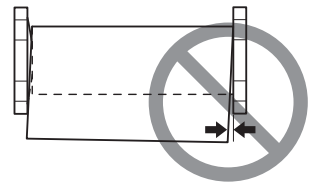


- 4** Pull out the roll evenly on both ends and insert it in the **Paper Feed Slot** (a). Advance the roll until the buzzer sounds.

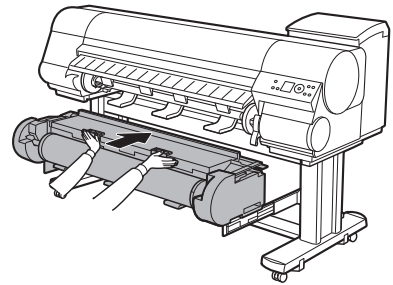


Important

- We recommend wearing clean cloth gloves when handling rolls to avoid soiling the printing surface.
- If the paper is wrinkled or warped, straighten it out before loading it.
- Load the roll so that there is no gap between the right edge of the paper and the **Roll Holder**.



- 5** In a crouching position, push the **Roll Unit** into the printer.

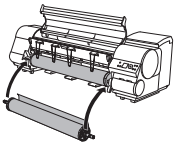


- 6** Position the **Wheeled Output Stacker** by the printer.  
(→"Using the Wheeled Output Stacker," User Manual)

- 7** Press the **OK** button.  
The paper is now advanced.

After you load a roll, the printer automatically shows a menu for selection of the type of paper on the **Display Screen**.

At this point, specify the type of paper. (→"Selecting the Paper Type (Roll)," User Manual)



## Removing the Roll from the Printer

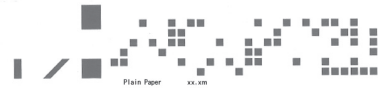
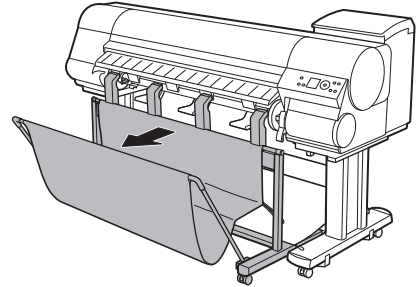
Remove rolls from the printer as follows.



MEMO

- Release the caster lock on the **Wheeled Output Stacker** and remove it beforehand.

- If you need to cut a printed roll, select **Paper Cutting** in the printer menu and cut the roll at the desired position. (→"Specifying the Cutting Method for Rolls," User Manual)
- If you have selected **Media Menu > ManageRemainRoll > On** in the printer menu, a barcode indicating the amount of paper left is printed on the leading edge of the roll. However, barcodes are not printed on some types of paper, and only a text message indicating paper information is printed.



Important

- If you have activated automatic monitoring of the remaining roll paper, do not remove the roll before the barcode is printed. You will be unable to keep track of the amount of roll paper left.

## Remove the roll from the printer (iPF825: from the Roll 1 (Upper) position)

1

- Press the **Load/Eject** button.  
For the iPF815, go to step 4.



2

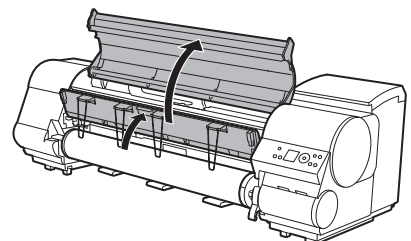
- Press **▲** or **▼** to select **Remove Roll**, and then press the **OK** button.

3

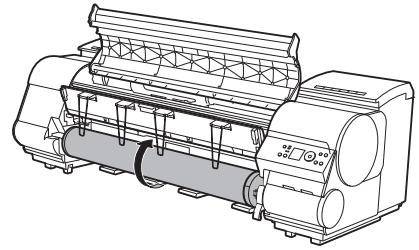
- Press **▲** or **▼** to select **Roll 1 (Upper)**, and then press the **OK** button.  
The roll can now be removed.

4

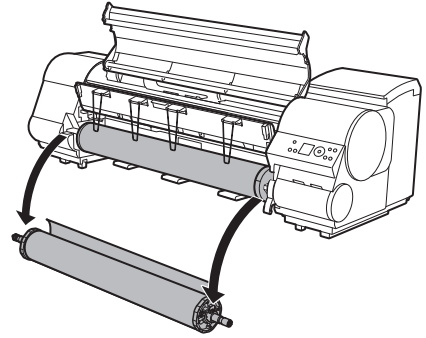
- Open the **Top Cover** and lift the **Ejection Guide**.



- 5** Using both hands, rotate the **Roll Holder** in the direction of the arrow to rewind the roll.

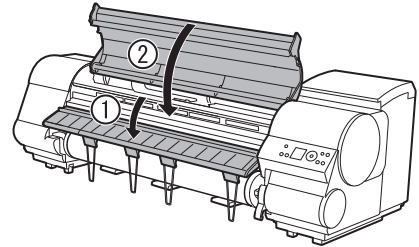


- 6** Remove the **Roll Holder** from the **Roll Holder Slot**.



- See the following procedure for instructions on removing the **Roll Holder** from the roll.  
(→ "Removing the Roll Holder from Rolls," User Manual)

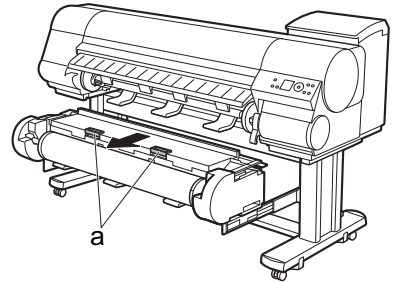
- 7** Lower the **Ejection Guide** and close the **Top Cover**.



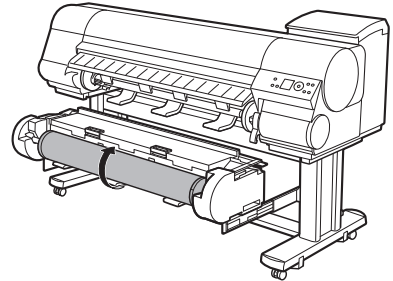
- To load new paper in the printer at this point, see the following procedure.  
(→ **1**, Loading Rolls in the Printer)

## Remove the roll from the Roll 2 (Lower) position (iPF825 only)

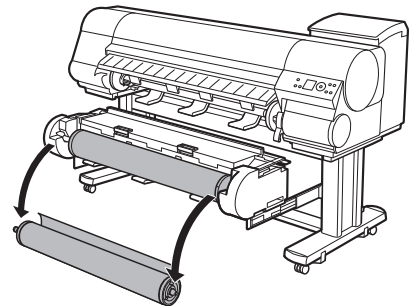
- 1** Press the **Load/Eject** button.
- 2** Press **▲** or **▼** to select **Remove Roll**, and then press the **OK** button.
- 3** Press **▲** or **▼** to select **Roll 2 (Lower)**, and then press the **OK** button.  
The roll can now be removed.
- 4** After confirming that the **Online lamp** is off, hold the **Roll Unit Lever** (a) and pull out the **Roll Unit**.



- 5** Using both hands, rotate the **Roll Holder** in the direction of the arrow to rewind the roll.

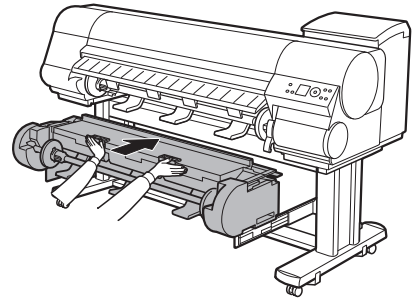


- 6** Remove the **Roll Holder** from the **Roll Holder Slot**.



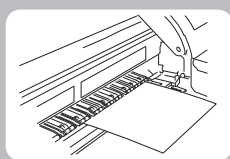
• See the following procedure for instructions on removing the **Roll Holder** from the roll.  
(→"Removing the Roll Holder from Rolls," User Manual)

**7** In a crouching position, push the **Roll Unit** in.



MEMO

- To load new paper in the printer at this point, see the following procedure.  
(→ **1**, Loading Rolls in the Printer)



# Loading Sheets in the Printer

Load sheets in the printer as follows.

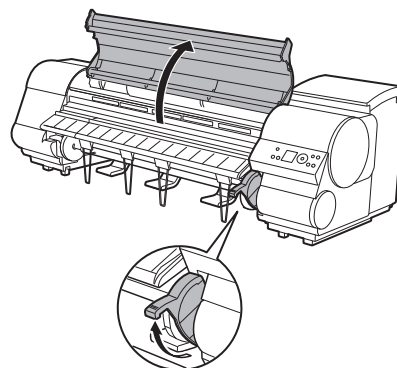


MEMO

- For details on supported types and sizes of paper, see "Paper Sizes" or the Paper Reference Guide. (→"Paper Sizes," User Manual), (→"Types of Paper," User Manual)
- If the **Platen** is dirty, clean inside the **Top Cover** before loading paper. (→**2**, If Paper is Soiled)
- After pressing the **Load/Eject** button, you can refer to instructions on the **Display Screen** as you load the paper. (→"Checking Instructions During Printer Operations," User Manual)

# 1

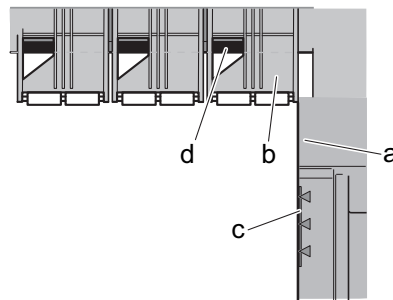
If you send a print job from a computer beforehand, the type and size of paper are shown on the **Display Screen**. Lift the **Release Lever** and open the **Top Cover**.



# 2

With a sheet lengthwise and printing-side up, insert it between the **Platen** (a) and the **Paper Retainer** (b). Align the edges of the sheet as follows.

1. Align the sheet with the **Paper Alignment Line** (c) at right.
2. Align the inserted edge of the sheet with the leading edge of the **Paper Alignment Line** (d), as shown.



When inserted, sheets are automatically held by suction against the **Platen**.



Important

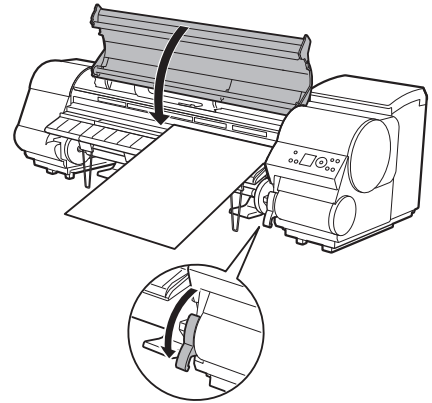
- Load a sheet so that it is parallel to the **Paper Alignment Line** at right (c). Loading paper askew will cause an error.
- Warped paper may rub against the Printhead. Straighten paper if it is warped before loading it.



MEMO

- You can adjust the strength of vacuum holding paper against the **Platen** when the **Release Lever** is up. If it is difficult to load paper, press the **▲** or **▼** button on the **Control Panel** to adjust the strength. Set vacuum stronger by pressing the **▲** button or weaker with the **▼** button. Three settings are available. However, even if you increase the vacuum, it may not be sufficient to hold some types of paper against the **Platen** well. In this case, use your hand to load the paper.
- Sheets are held in place by suction through holes on the **Platen**. Although the suction may produce a noise when paper is loaded in some positions, it does not indicate a problem. If the noise is distracting, try moving the paper over slightly to the left or right (up to 1 mm [0.039 in]) while keeping it parallel to the **Paper Alignment Line**.
- The suction remains on for about 30 seconds during loading. If you cannot finish loading a sheet during this time, pull the sheet away and reinsert it to start the suction again.

**3** Lower the **Release Lever** and close the **Top Cover**.

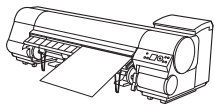


The printer now starts feeding the paper.

After the paper is advanced, the printer automatically goes online and starts printing.

If no print job has been received from the computer beforehand, the printer automatically shows a menu for selection of the type of paper on the **Display Screen**.

In this case, select the type of paper. (→"Selecting the Paper Type (Sheet)," User Manual)



# Removing Sheets

This section describes how to remove sheets from the printer.

Remove sheets from the printer as follows.

1

Press the **Load/Eject** button.



MEMO

- Paper cannot be ejected by using the **Load/Eject** button when print jobs are in progress or during the ink drying period. Before ejecting paper, press the **Stop** button to cancel printing, print job processing, or ink drying.

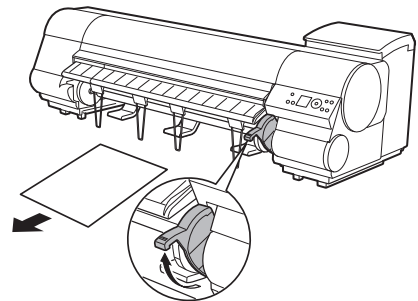
2

Press the **OK** button to eject the paper.  
The paper is ejected from the front of the printer.



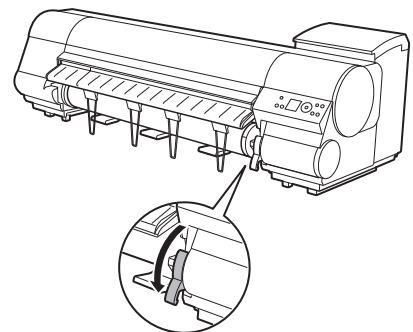
3

As you hold the sheet, lift the **Release Lever** and remove the sheet.



4

Lower the **Release Lever**.





# Consumables

## Ink Tanks

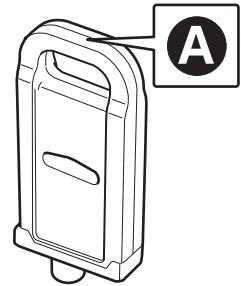
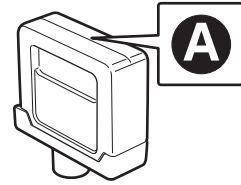
When purchasing Ink Tanks, make sure an "A" is printed on the label, along with the following Ink Tank serial numbers.

330 ml (11.2 fl oz)

- MBK Ink Tank PFI-303MBK
- BK Ink Tank PFI-303BK
- C Ink Tank PFI-303C
- M Ink Tank PFI-303M
- Y Ink Tank PFI-303Y

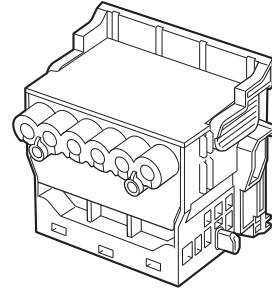
700 ml (23.7 fl oz)

- MBK Ink Tank PFI-703MBK
- BK Ink Tank PFI-703BK
- C Ink Tank PFI-703C
- M Ink Tank PFI-703M
- Y Ink Tank PFI-703Y



## Printhead

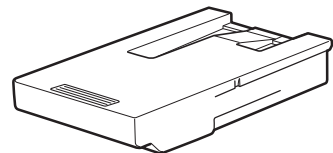
- Printhead PF-03



## Maintenance Cartridge

The Maintenance Cartridge is provided with a Shaft Cleaner.

- Maintenance Cartridge MC-09





## Replacing Ink Tanks

Replace ink tanks as follows.

### Compatible ink tanks

Replacement ink tanks in 330 ml (11.2 fl oz) and 700 ml (23.7 fl oz) capacities are supported.

(→ **1**, Consumables)

### Precautions when handling ink tanks

Take the following precautions when handling ink tanks.



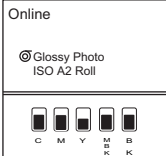
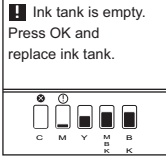
Important

- There may be ink around the ink supply section of ink tanks you remove. Handle ink tanks carefully during replacement. The ink may stain clothing.
- We recommend using up an Ink Tank in the course of printing within six months after breaking the seal. Printing quality may be affected if you use older ink tanks.
- Do not leave the printer without ink tanks installed for extended periods (a month or more). Residual ink may become clogged inside the printer and affect printing quality.

### Make sure the printer is ready for ink tank replacement

Ink Tank replacement is possible in the following cases.

Do not remove an Ink Tank during initialization immediately after turning on the printer, or during printhead cleaning.

<p>You can replace ink tanks if the <b>Display Screen</b> indicates the printer is <b>Online</b> or <b>Offline</b>, or if messages advise you to check the amount of ink left or replace ink tanks.</p>	 <p>Online ©Glossy Photo ISO A2 Roll</p> <p>C M Y M B E K</p>
<p>If a message requests you to replace ink tanks, press the <b>OK</b> button. In this case, go to "Remove the Ink Tanks" without following the instructions in "Access the menu for Ink Tank replacement".</p>	 <p><b>!</b> Ink tank is empty. Press OK and replace ink tank.</p> <p>C M Y M B E K</p>



MEMO

- Ink Tank replacement is possible even when print jobs are being canceled or if paper is being advanced.

## Access the menu for ink tank replacement



- This step is not necessary if a message requests you to replace ink tanks. Check the message on the **Display Screen** and press the **OK** button. Remove the Ink Tank at this point.

**1** Press the **Menu** button to display **MAIN MENU**.

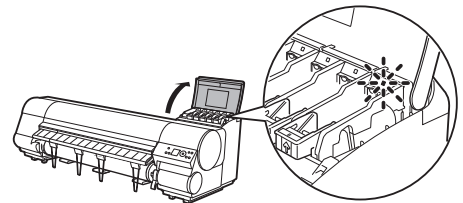


**2** Press **▲** or **▼** to select **Rep. Ink Tank**, and then press the **▶** button.

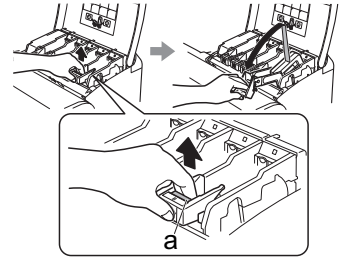
**3** Press **▲** or **▼** to select **Yes**, and then press the **OK** button.  
A message on the **Display Screen** requests you to open the **Ink Tank Cover**. Remove the Ink Tank at this point.

## Remove the ink tanks

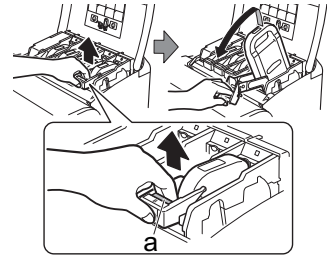
**1** Open the **Ink Tank Cover** of the tank for replacement and check the **Ink Lamp**.  
The **Ink Lamp** flashes quickly if there is no ink left.



**2** Lift the stopper (a) of the **Ink Tank Lock Lever** for the color to replace. Lift the **Ink Tank Lock Lever** until it stops, and then push it down to the front.



**330 ml tanks**

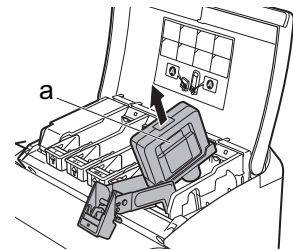


**700 ml tanks**

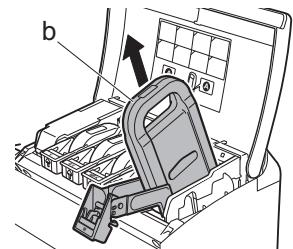


- Push the **Ink Tank Lock Lever** down until it locks.
- MEMO • Make sure the **Ink Tank Lock Lever** does not return to the original position.

**3** Hold the Ink Tank by the grips (a) or handle (b) and remove it. Press the **OK** button.



**330 ml tanks**

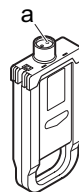


**700 ml tanks**



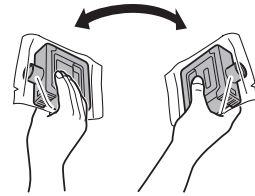
Caution

- Store the Ink Tank you removed in the box with the ink holes (a) facing up. Otherwise, ink may leak and cause stains.



## Install the ink tanks

- 1** Before opening the pouch, tilt the Ink Tank to the left and right gently seven or eight times. Hold 330 ml ink tanks in one hand and 700 ml ink tanks in two hands, as shown.



**330 ml tanks**



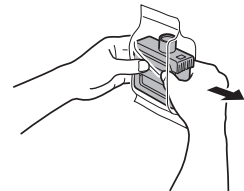
**700 ml tanks**



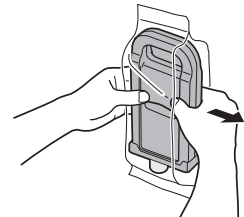
Important

- If you do not agitate the Ink Tank, the ink may sediment, which may affect printing quality.

- 2** Open the pouch and remove the Ink Tank.



**330 ml tanks**



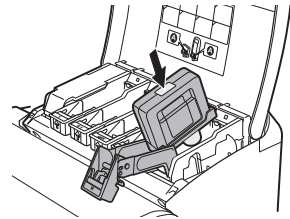
**700 ml tanks**



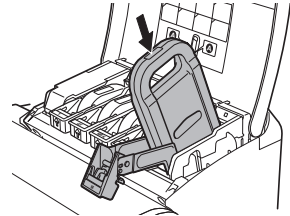
Important

- Never touch the ink holes or electrical contacts. This may cause stains, damage the Ink Tank, and affect printing quality.
- Do not remove and agitate ink tanks that have already been installed in the printer. Ink may leak out.

- 3** Press the **OK** button and insert the Ink Tank into the holder with the ink holes facing down, as shown.



**330 ml tanks**



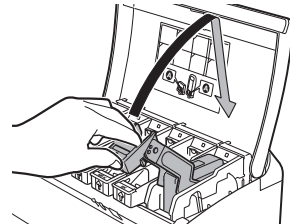
**700 ml tanks**



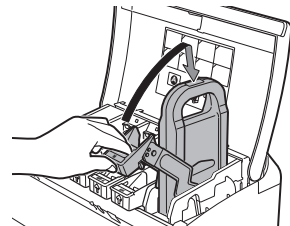
Important

- Ink tanks cannot be loaded in the holder if the color or orientation is incorrect. If the Ink Tank does not fit in the holder, do not force it into the holder. Make sure the color of the **Ink Tank Lock Lever** matches the color of the Ink Tank, and check the orientation of the Ink Tank before reloading it.

- 4** Lift the **Ink Tank Lock Lever** until it stops, and then push it down until it clicks into place.

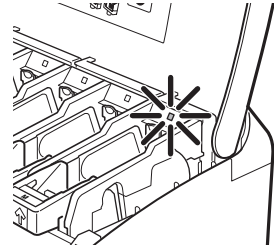


**330 ml tanks**



**700 ml tanks**

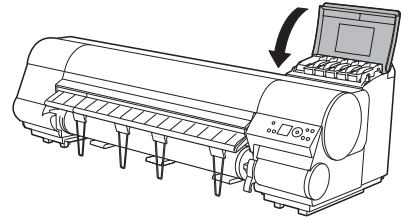
**5** Make sure the **Ink Lamp** is lit.



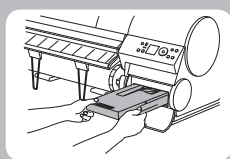
• If the **Ink Lamp** is not lit, reload the tank.

MEMO

**6** Close the **Ink Tank Cover**.



The printer will go online or offline.



## Replacing the Maintenance Cartridge

Replace the Maintenance Cartridge and Shaft Cleaner as follows.

### Compatible maintenance cartridges

Use Maintenance Cartridge MC-09.

### Precautions when handling the maintenance cartridge

Take the following precautions when handling the Maintenance Cartridge.

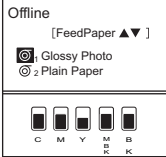



Important

- Do not remove the Maintenance Cartridge except to replace it.
- To prevent ink from leaking from a used Maintenance Cartridge, avoid dropping the cartridge or storing it at an angle. Otherwise, ink may leak and cause stains.
- Ink adheres to the top of the Maintenance Cartridge after it has been used. Handle the Maintenance Cartridge carefully during replacement. The ink may stain clothing.

### Make sure the printer is ready for maintenance cartridge replacement

Maintenance Cartridge replacement is possible in the following cases.

<p>You can replace the Maintenance Cartridge if the <b>Display Screen</b> indicates the printer is <b>Offline</b>, or if messages advise you to check the remaining cartridge capacity or replace the Maintenance Cartridge.</p>	 <p>Offline [FeedPaper ▲▼] Glossy Photo 2 Plain Paper</p> <p>C M Y BK</p>
<p>If a message prompts you to replace the Maintenance Cartridge, press the <b>OK</b> button. In this case, go to "Replace the maintenance cartridge" without following the instructions in "Access the menu for maintenance cartridge replacement".</p>	 <p><b>Maintenance cartridge full.</b></p> <p>Replace the maintenance cartridge.</p>



Caution

- Do not pull out the Maintenance Cartridge during initialization immediately after turning on the printer, during Printhead cleaning, or while ink is being drawn out. Ink may leak out.
- If you pause printing to replace the Maintenance Cartridge, it may cause the printed images to be blurry.



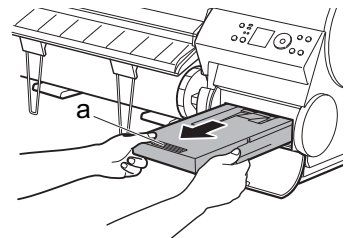
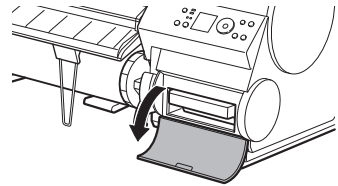
## Access the menu for maintenance cartridge replacement

- 1 Press the **Menu** button to display **MAIN MENU**.
- 2 Press **▲** or **▼** to select **Maintenance**, and then press the **▶** button.
- 3 Press **▲** or **▼** to select **Repl. maint cart**, and then press the **▶** button.
- 4 Press **▲** or **▼** to select **Yes**, and then press the **OK** button.  
A message on the **Display Screen** advises you to open the **Maintenance Cartridge Cover**.



## Replace the maintenance cartridge

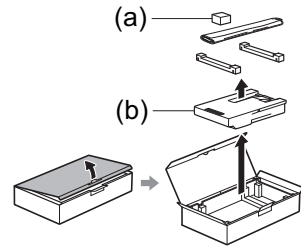
- 1 At this point, open the **Maintenance Cartridge Cover**.
- 2 Hold the used Maintenance Cartridge by the grip (a) with one hand and put your other hand under the Maintenance Cartridge to hold it firmly on the bottom, keeping it level as you pull it out.



Important

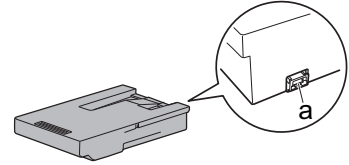
- Used maintenance cartridges are heavy. Always grasp the cartridge firmly and keep the cartridge level during removal and storage. If you drop a used Maintenance Cartridge or store it at an angle, ink may leak and cause stains.
- The remaining Maintenance Cartridge capacity is recorded on each printer. Do not install a used Maintenance Cartridge in another printer.

**3** Open the box, remove the plastic bag, packaging material, and Shaft Cleaner (a), and then take out the Maintenance Cartridge (b).

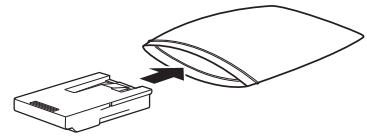


Important

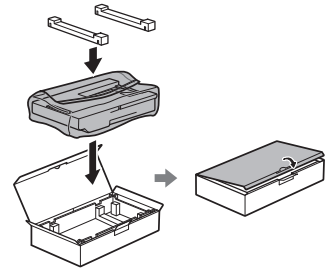
• Never touch the metal contacts (a). This may damage the Maintenance Cartridge.



**4** Keep the used Maintenance Cartridge level as you put it in the plastic bag. Expel excess air from the plastic bag and seal the zipper.



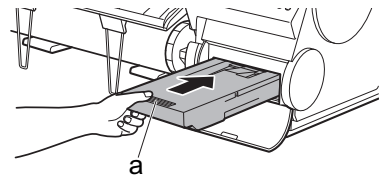
**5** Confirm the Maintenance Cartridge is right-side up, put it in the box, attach the packaging material, and store it so that it stays level.



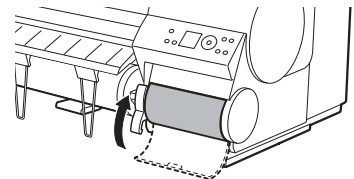
Important

• Always put the used Maintenance Cartridge back in the box and store the box on a flat surface. Otherwise, ink may leak and cause stains.

**6** Keeping the new Maintenance Cartridge level, insert it all the way in.



**7** Close the **Maintenance Cartridge Cover**.



**8** Press the **OK** button.

The printer now initializes the Maintenance Cartridge.  
Next, replace the Shaft Cleaner.



## Replace the shaft cleaner

**1** After the message is displayed regarding Shaft Cleaner replacement, press **▲** or **▼** to select **Yes**, and then press the **OK** button.

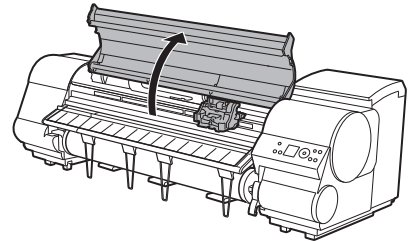
After the **Carriage** is moved, the **Display Screen** indicates **Open Upper Cover**.



MEMO

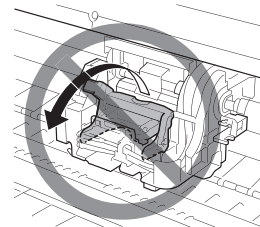
- If you do not respond within two minutes, shaft cleaner replacement is canceled and the printer goes online automatically. If the printer is online, execute **Repl. S. Cleaner** in the **MAIN MENU**.

**2** Open the **Top Cover**.

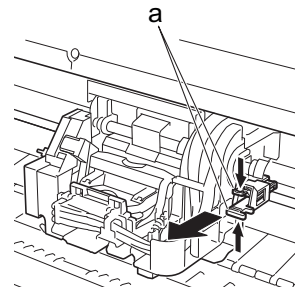


MEMO

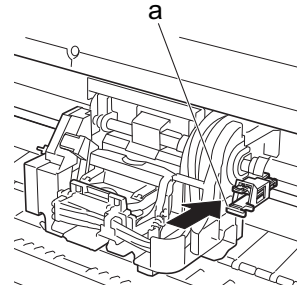
- Do not open the **Printhead Fixer Lever** toward the front. Accidentally opening the **Printhead Fixer Lever** toward the front will draw out ink, which consumes ink.



**3** Hold the Shaft Cleaner on the right side of the **Carriage** by the grips (a) and pull it toward you to remove it.

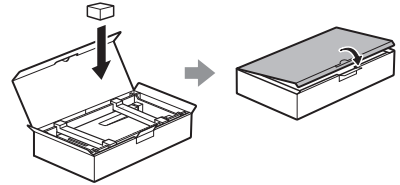


- 4** After removing the cap of the new Shaft Cleaner, hold it by the bottom of the grips (a) and attach it to the **Carriage**. Push the Shaft Cleaner until it clicks into place.

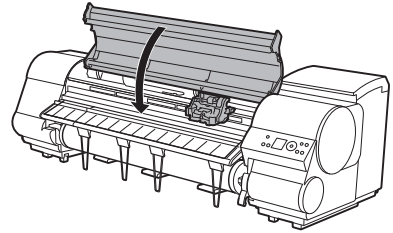


MEMO

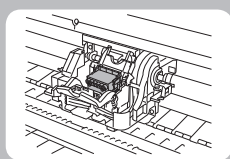
- Attach the cap from the new Shaft Cleaner on the used one. Be sure to put the used Shaft Cleaner in the small box before putting it in the larger box with the used Maintenance Cartridge for disposal.



- 5** Close the **Top Cover**.



The **Carriage** is moved, and the printer goes online.



## Replacing the Printhead

Replace the Printhead as follows.

### When to replace the printhead

Replace the Printhead in the following situations.


- If the printing quality does not improve even after one or two cycles of **Head Cleaning B** from the printer menu
- If the **Display Screen** indicates **Open top cover and replace the printhead**.
- If your Canon dealer has advised you to replace the Printhead

### Compatible printheads


Use Printhead PF-03.


### Precautions when handling the printhead

Take the following precautions when handling the Printhead.

-  **Important**
- There may be ink around the nozzles of the Printhead you remove. Handle the Printhead carefully during replacement. The ink may stain clothing.
  - Do not open the Printhead pouch until immediately before installation. After removing the Printhead from the pouch, install it right away. If the Printhead is left after the pouch is opened, the nozzles may dry out, which may affect printing quality.

### Access the menu for printhead replacement

-  **Caution**
- When replacing the Printhead immediately after printing, wait a few minutes before replacing it. The metal parts of the Printhead become hot during printing, and there is a risk of burns from touching these parts.

-  **MEMO**
- Prepare a new Ink Tank when ink levels are low.
  - Your hands may become dirty during Printhead replacement. Use the gloves provided with the new Printhead for replacement.

**1** If the roll is not ejected because of the cutting method selected, cut it manually and remove it. (→"Cutting Roll Paper After Printing," User Manual)

**2** Clean inside the **Top Cover**. (→**2**, If Paper is Soiled)

**3** Press the **Menu** button to display **MAIN MENU**.



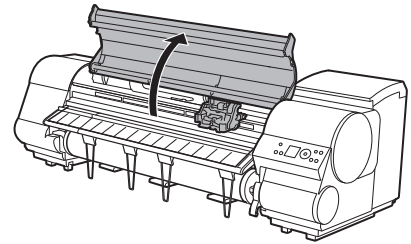
**4** Press **▲** or **▼** to select **Maintenance**, and then press the **▶** button.

**5** Press **▲** or **▼** to select **Replace P.head**, and then press the **▶** button.

**6** Press **▲** or **▼** to select **Yes**, and then press the **OK** button.  
Ink is now filled.  
After about two minutes, a message is shown on the **Display Screen** instructing you to open the **Top Cover**.

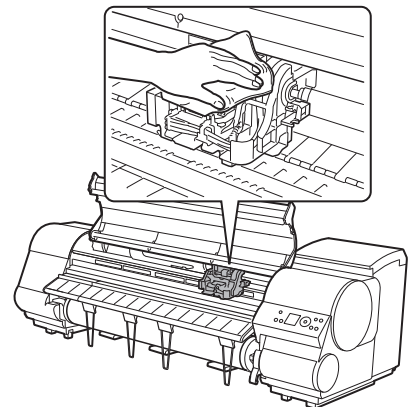
## Replace the printhead

**1** Open the **Top Cover**.



Instructions are now shown on the **Display Screen** regarding Printhead replacement.

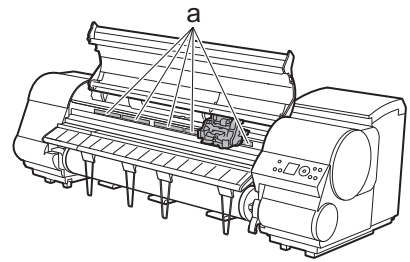
**2** If the **Printhead Fixer Cover** or **Printhead Fixer Lever** is dirty, use a damp cloth that you have wrung out completely to wipe it clean.



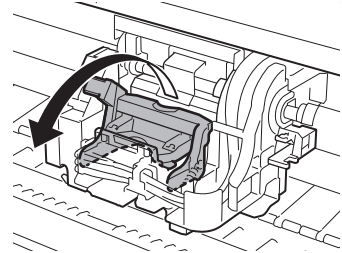
Important

• Never touch the metal contacts of the **Carriage**. This may damage the printer.

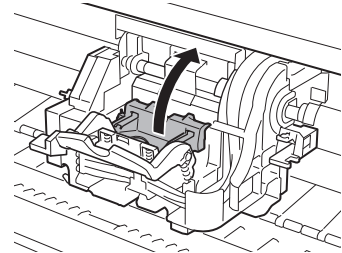
- 3** If the ventilation duct (a) is dirty, use a damp cloth that you have wrung out completely to wipe it clean. Move the **Carriage** out of the way manually if **Carriage** is concealing the ventilation duct, and then clean the duct.



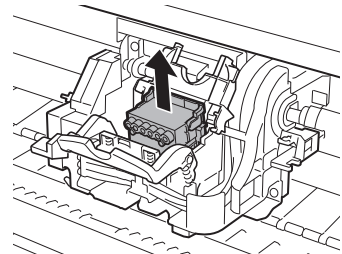
- 4** Pull the **Printhead Fixer Lever** forward all the way to open it completely.



- 5** Pull up the **Printhead Fixer Cover** to open it completely.

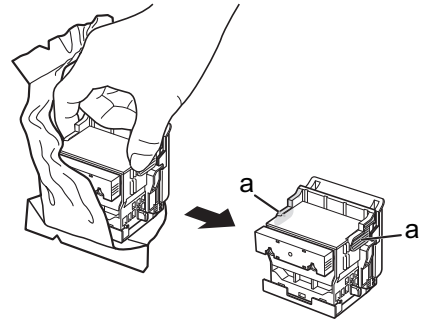


- 6** Remove the used Printhead.



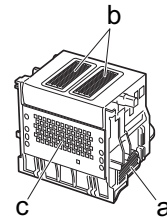
MEMO • Dispose of the used Printhead in accordance with local regulations.

- 7** Holding the new Printhead by the grips (a), remove it from the case.



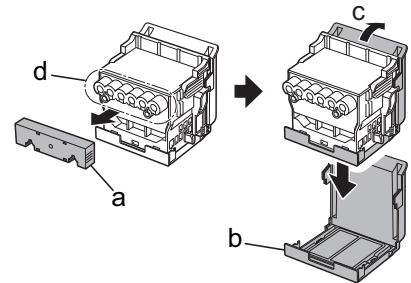
Important

- When handling the Printhead, always hold it by the grips (a). Never touch the nozzles (b) or metal contacts (c). This may damage the Printhead and affect printing quality.



- If you need to put a Printhead somewhere temporarily before installation, do not keep the nozzles and metal contacts facing down. If the nozzles or metal contacts are damaged, it may affect the printing quality.

- 8** While firmly holding the Printhead you have removed, use your other hand to remove the orange Safety Cap 1 (a). Squeeze the grips (c) of Safety Cap 2 (b) and pull it down to remove it.

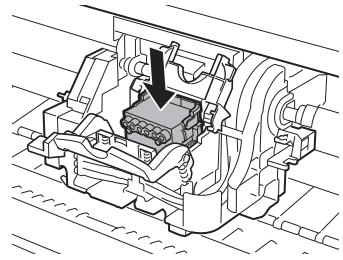


Important

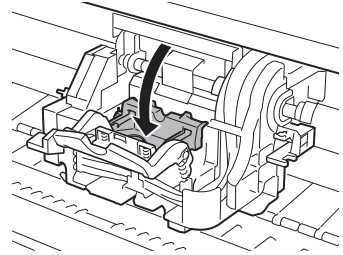
- The inside surfaces of Safety Cap 1 (a) and Safety Cap 2 (b) are coated with ink to protect the nozzles. Be careful not to touch these surfaces when removing the caps.
- The Printhead contains ink to protect the nozzles. We recommend removing Safety Cap 2 (b) as you hold it over the Printhead package or safely out of the way to avoid spilling ink and staining your clothes or the surrounding area. If ink accidentally spills, wipe off the ink with a dry cloth.
- Never touch the ink supply section (d). This may cause printing problems.
- Do not reattach the Safety Cap or protective material. Dispose of these materials in accordance with local regulations.



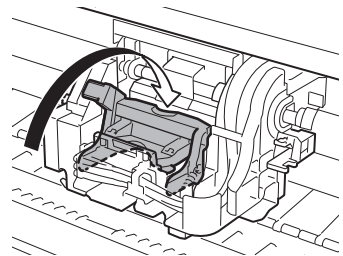
**9** With the nozzles facing down and the metal contacts toward the back, insert the Printhead into the **Carriage**. Carefully push the printhead firmly into the **Carriage**, ensuring that the nozzles and metal contacts do not touch the carriage.



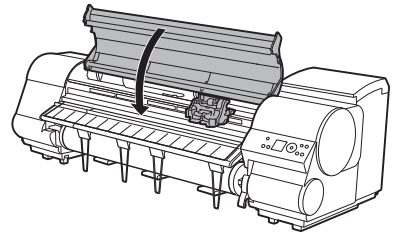
**10** Pull the **Printhead Fixer Cover** down toward the front to lock the Printhead in place.



**11** Push the **Printhead Fixer Lever** toward the back of the printer until it clicks.



**12** Close the **Top Cover**.



It takes about six minutes for ink to fill the system.



Important

- Never remove an Ink Tank while the system is filling with ink.

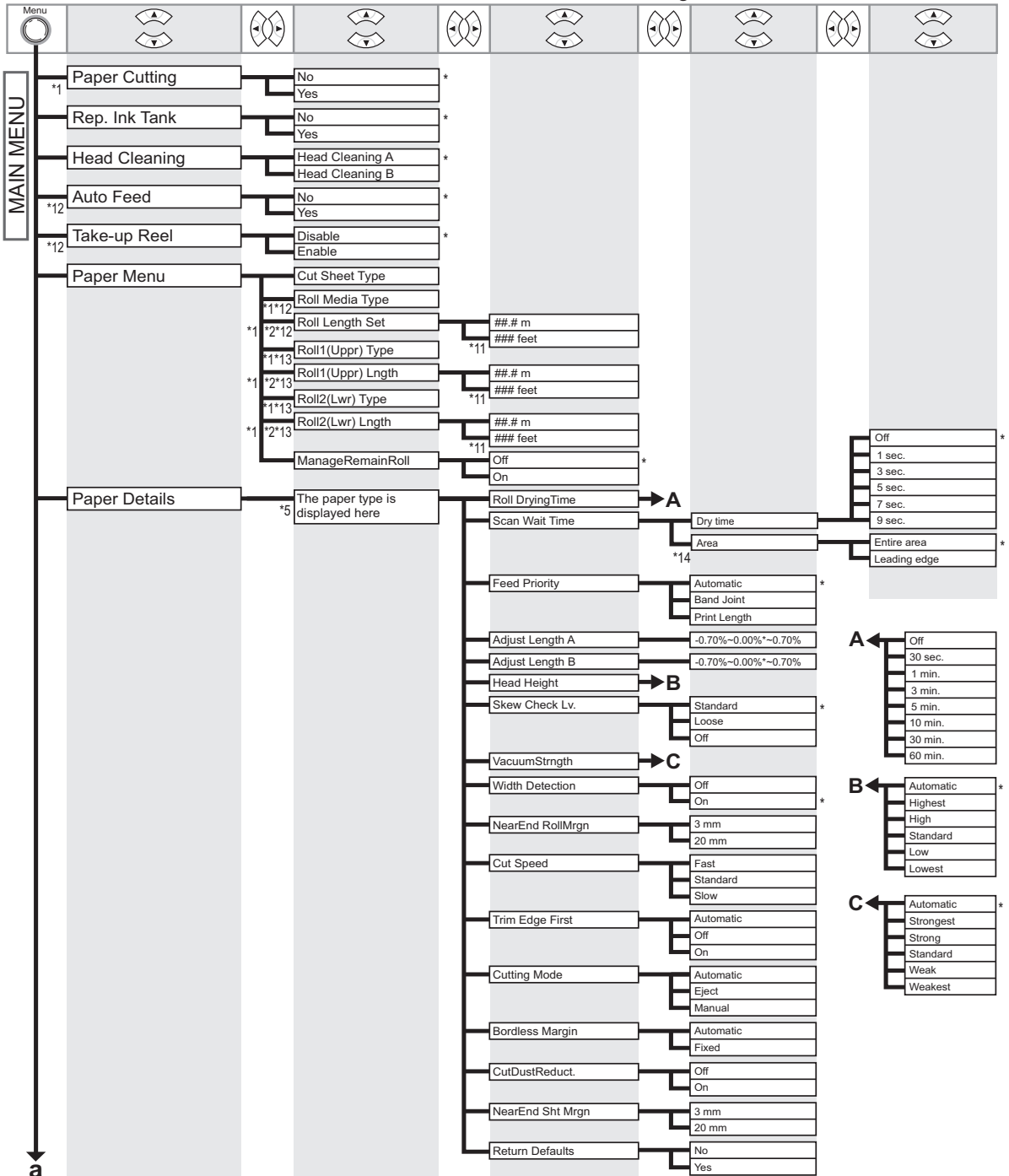


Important

- If **Auto Print** is set to **On** in the printer menu, the printhead will be automatically adjusted after Printhead replacement when the system is finished filling with ink. In this case, follow the instructions displayed for Printhead adjustment. If **Auto Print** is set to **Off**, execute **Auto Head Adj. > Advanced Adj.** in the printer menu. (→ **2**, If Vertical Lines are Warped or Colors are Misaligned)

# Menu Map

The structure of the main menu is as follows. For details on settings values, see the User Manual.



\*1: Available only if a roll is loaded.

\*2: Available only if **ManageRemainRoll** is **On**.

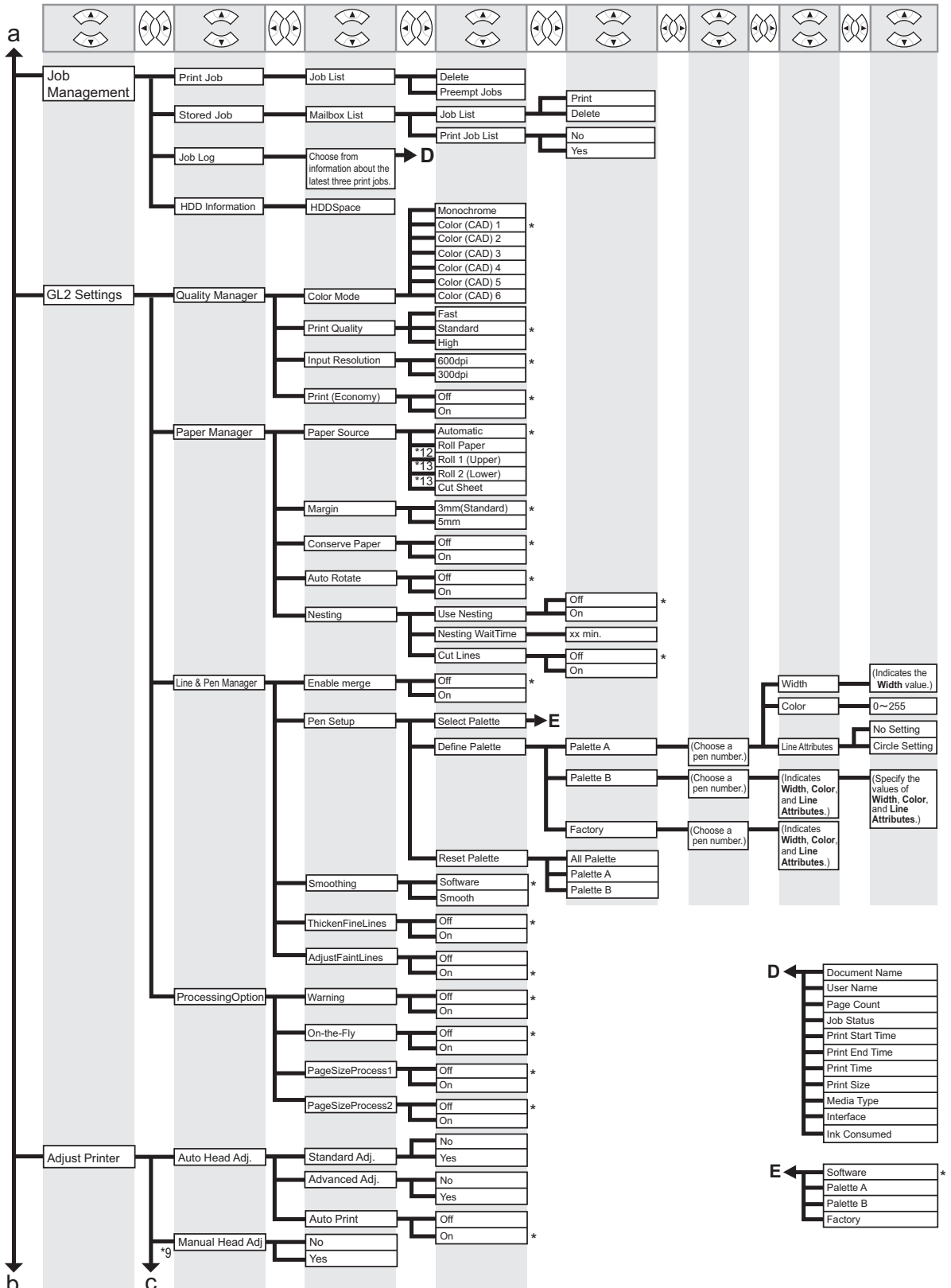
\*11: Follows the setting in **Length Unit**.

\*12: Available only on the iPF815.

\*13: Available only on the iPF825.

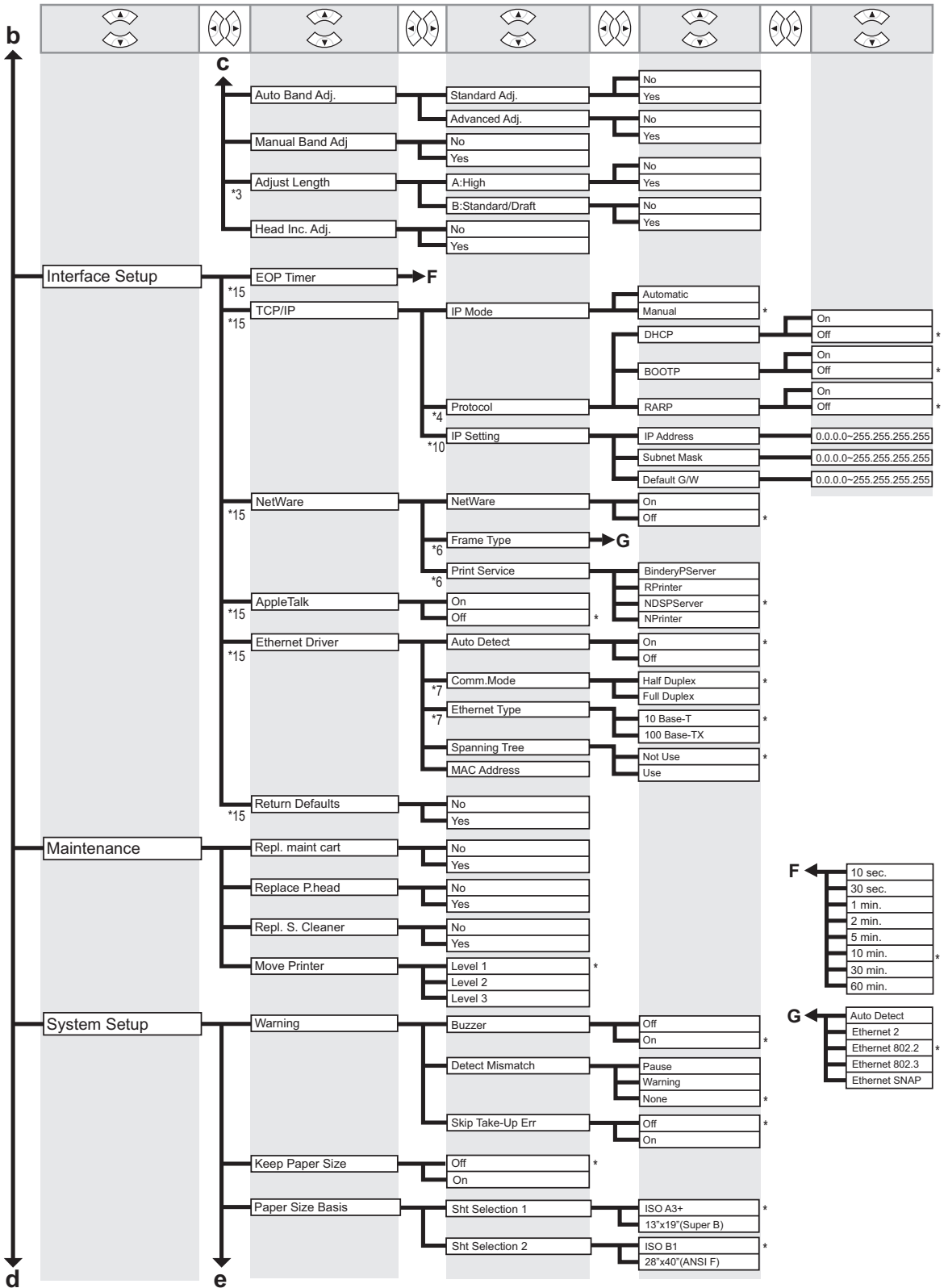
\*14: **Leading edge** is not available as a setting option in the **Paper Detailed Settings** dialog box of the printer driver.

\*5: For information on the types of paper the printer supports, refer to the Paper Reference Guide. The paper type setting in the printer driver and related software (as well as on the **Control Panel**) is updated when you install the printer driver from the User Software CD-ROM or if you change paper information by using the Media Configuration Tool.



\*9: Available after you have used **Advanced Adj.** in **Auto Head Adj.** once.  
 \*12: Available only on the iPF815.  
 \*13: Available only on the iPF825.

Menu Map



\*3: Available only if Feed Priority is Print Length.

\*4: Available only if IP Mode is Automatic.

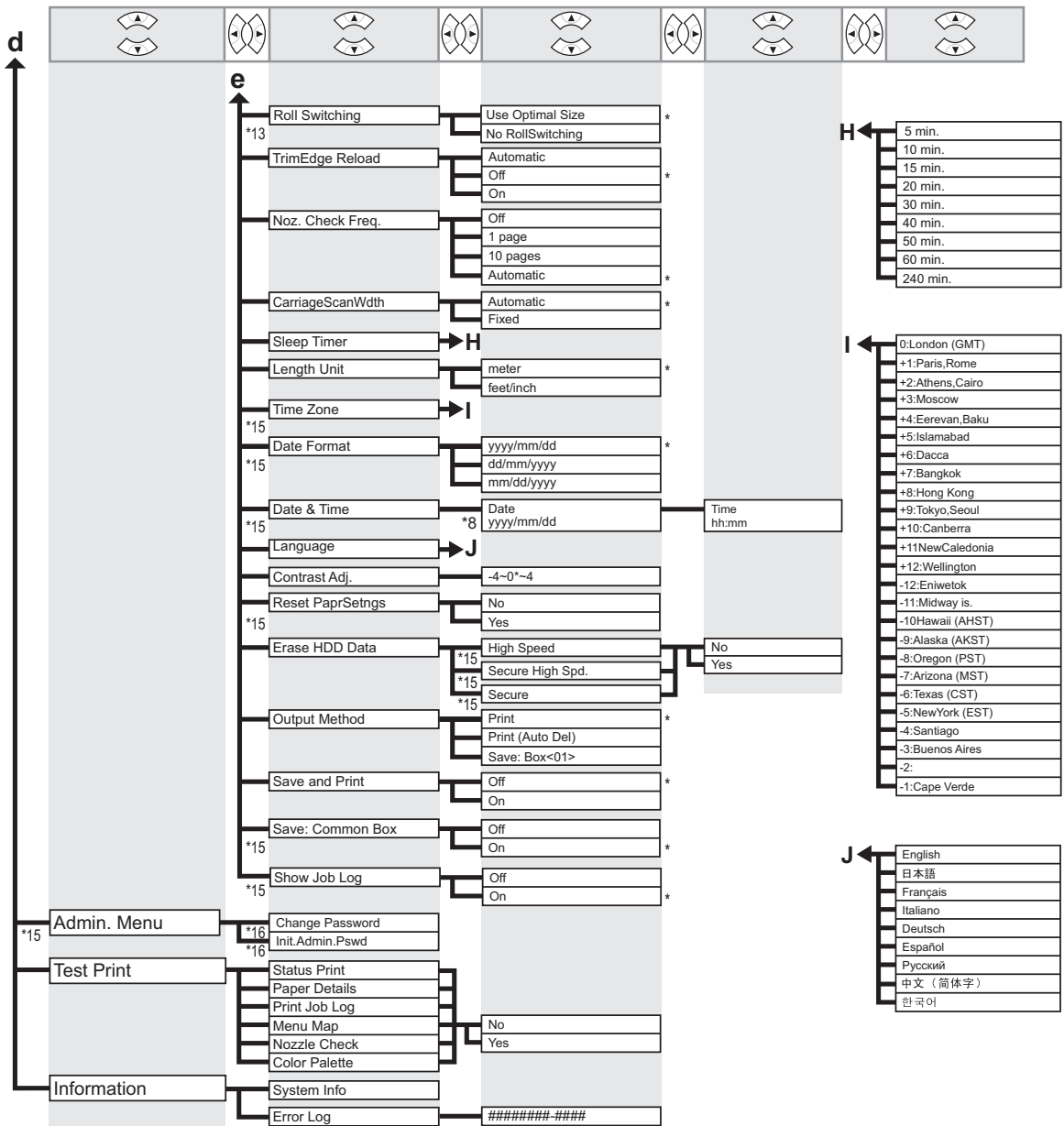
\*6: Available only if NetWare is On.

\*7: Available only if Auto Detect is Off.

\*10: Not displayed if IP Mode is Automatic.

\*13: Available only on the iPF825.

\*15: Viewing and configuration is possible for administrators, and only viewing for other users.

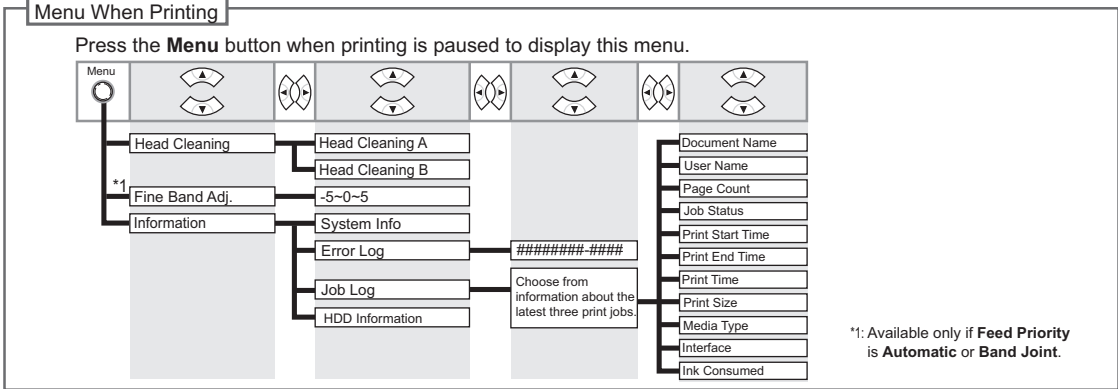


\*8: Follows the setting in **Date Format**.

\*13: Available only on the iPF825.

\*15: Viewing and configuration is possible for administrators, and only viewing for other users.

\*16: Viewing and configuration is possible for administrators only.



# Index

## Numerics

---

- 2-Inch Paper Core Attachment ..... 12
- 3-Inch Paper Core Attachment ..... 12

## c

---

- Carriage ..... 10, 35, 38

## d

---

- Display Screen ..... 11

## e

---

- Ejection Guide ..... 8, 9
- Electronic manuals (User Manual) ..... 5, 6

## f

---

- Flange ..... 13

## h

---

- Holder Stopper ..... 8, 9, 12

## i

---

- imagePROGRAF Support Information ..... 5
- Ink Lamp ..... 27, 31
- Ink Tank Cover ..... 8, 9, 27, 31
- Ink Tank Lock Lever ..... 28, 30
- Ink tank replacement ..... 26
- Ink tanks ..... 25, 26

## m

---

- Maintenance Cartridge ..... 8, 9, 25, 32
- Maintenance Cartridge Cover ..... 8, 9
- Maintenance cartridge replacement ..... 32
- Menu map (menu structure) ..... 42

## p

---

- Paper Alignment Line ..... 10, 22
- Paper Feed Slot ..... 8, 9, 15, 17
- Paper Reference Guide ..... 5
- Paper Retainer ..... 10, 22
- Platen ..... 10
- Printhead ..... 25, 37
- Printhead replacement ..... 37

## r

---

- Release Lever ..... 8, 9
- Roll Holder ..... 8, 9, 12
- Roll Holder Slot ..... 8, 9
- Roll loading ..... 14
- Roll removal ..... 18
- Roll Unit ..... 8, 9
- Roll Unit Lever ..... 8, 9

## s

---

- Shaft cleaner replacement ..... 35
- Sheet loading ..... 22
- Sheet removal ..... 24

## t

---

- Top Cover ..... 8, 9, 10



# Canon

**Canon Inc.**

30-2, Shimomaruko 3-chome, Ohta-ku, Tokyo 146-8501, Japan

**Canon U.S.A., Inc.**

One Canon Plaza, Lake Success, NY 11042 U.S.A

**Canon Europe Ltd.**

3 The Square, Stockley Park, Uxbridge, Middlesex, UB11 1ET United Kingdom

**Canon (China) Co., Ltd.**

15F Jinbao Building No.89 Jinbao Street, Dongcheng District, Beijing 100005, China

**Canon Australia Pty. Ltd.**

1 Thomas Holt Drive, North Ryde, Sydney, N.S.W.2113, Australia

