



DEE-ZOL and DEE-ZOL PLUS (WITH ANTI-GEL)



DIESEL FUEL SUPPLEMENTS THAT SOLVE FUEL-RELATED PROBLEMS IN SUMMER AND WINTER

THE PROBLEM

Due to increased worldwide demand and removal of fuel sulfur, diesel fuel quality and lubricity have declined dramatically over the last thirty years. This has led to common problems such as filter clogging, injector malfunctions, hesitation and poor acceleration, erratic combustion, intolerable emissions, sludge buildup and poor fuel economy.

The EPA-mandated removal of sulfur also creates ultra-low sulfur diesel with cold weather handling issues. Cold temperatures cause solid wax crystals to form in the fuel, which increase in size as the temperature drops, until they plug the fuel filter and choke off the fuel supply.

All diesel stocks contain high concentrations of paraffin, with ultra-low sulfur fuels containing the most. As the ambient temperature drops, solid wax crystals form in the fuel. These crystals increase in size as the temperature continues to drop, and begin to collect on the fuel filter, eventually clogging the filter and choking the fuel supply.

THE SOLUTIONS:

DEE-ZOL AND DEE-ZOL PLUS

Bell's **Dee-Zol** is a multi-purpose additive ideal for all grades and brands of diesel fuel – including low- and ultra-low sulfur diesel fuels. **Dee-Zol** contains dispersant, moisture eliminator, detergent, combustion improver, lubricant, fuel preservative and stabilizer.

Dee-Zol Plus contains all the benefits of **Dee-Zol**, plus a cold flow improver to condition fuel for cold weather use down to -10 deg F! **Dee-Zol Plus** reduces the size of wax

crystals so they can pass through the fuel filter, allowing the fuel to flow and preventing clogging of the filter.

DEE-ZOL AND DEE-ZOL PLUS BENEFITS:

IMPROVED PERFORMANCE:

- Reduces cetane requirement of the engine
- Increases mileage and horsepower
- Increases engine life and reduces downtime
- Improves cold weather starting
- Reduces pollutants and smoke
- Reduces downshifting

Dee-Zol and **Dee-Zol Plus** contain PB4500 Power Booster to produce the most uniform fuel burn on the market today. As fuel combustion is improved, more power is delivered to the piston as it is driven down on the power stroke. This means less downshifting and better performance with improved fuel mileage.

DEPOSIT CONTROL:

- Removes carbon, gum and varnish deposits
- Cleans injectors and keeps them clean
- Extends fuel filter life

Deposits on fuel injectors impede fuel delivery. Deposits on the injector tip create a stream of liquid fuel that dribbles into the combustion chamber. The unburned fuel leaves the engine through the exhaust system in the form of black smoke. **Dee-Zol** and **Dee-Zol Plus** remove combustion chamber and injector deposits, making diesel fuel burn clean.

INCREASED LUBRICATION FOR:

- Injectors and injector pump
- Rubber O-rings
- Top cylinder area
- Cylinder liners

In 2006, the EPA directed a 97% reduction in the sulfur content of diesel fuel. The lost lubricity can cause catastrophic failure in fuel injection systems. **DEE-ZOL** and **DEE-ZOL PLUS** replace the lubricating features of sulfur lost and protect the injection system and the upper cylinder area. Both products contain a seal conditioner which protects the O-rings, fuel pump, and rubber and plastic parts of the fuel system.

FUEL STABILITY:

Contains surfactants and metal deactivators that slow the oxidation reactions that are the primary cause of sludge formation and fuel stratification. This helps better retain the full energy value of the fuel.

ANTI-FOAMING PROPERTIES:

- Contains surfactants and metal deactivators that slow
- Reduces fuel fill time
- Increases storage capacity of tanks

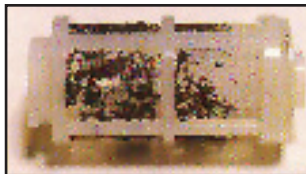
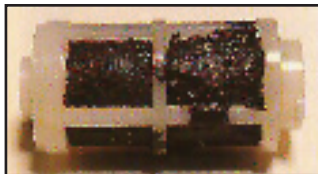
MOISTURE ELIMINATION

DEE-ZOL and **DEE-ZOL PLUS** contain an alcohol-free moisture eliminator to solve moisture and micro-organism problems. By removing freestanding water in the fuel, moisture problems and microbial contamination are eliminated. The fuel is restored to a state that promotes high performance combustion.

ADDITIONAL COLD WEATHER BENEFITS OF USING DEE-ZOL PLUS:

- Lowers cold filter plug point
- Eliminates fuel filter clogging due to cold weather wax build-up
- Improves cold weather fuel flow

REMOVES SLUDGE & MICROBIAL GROWTH



BEFORE

AFTER

DOES NOT CONTAIN METHANOL, ALCOHOL OR ISOPROPYL ALCOHOL

DOSAGE

Before refilling fuel tank, add additive (to ensure good mixing): 1 oz to 10 gallons diesel fuel; 1 quart to 320 gallons; 1 gallon to 1280 gallons. For initial treatment,

use a double dosage of **DEE-ZOL** or **DEE-ZOL PLUS** to remove build up.

DEE-ZOL and **DEE-ZOL PLUS** are EPA registered.



We Made It First. We Make It Best.

DEE-ZOL and DEE-ZOL PLUS (WITH ANTI-GEL)



INCREASED LUBRICATION FOR:

- Injectors and injector pump
- Rubber O-rings
- Top cylinder area
- Cylinder liners

In 2006, the EPA directed a 97% reduction in the sulfur content of diesel fuel. The lost lubricity can cause catastrophic failure in fuel injection systems. **DEE-ZOL** and **DEE-ZOL PLUS** replace the lubricating features of sulfur lost and protect the injection system and the upper cylinder area. Both products contain a seal conditioner which protects the O-rings, fuel pump, and rubber and plastic parts of the fuel system.

FUEL STABILITY:

Contains surfactants and metal deactivators that slow the oxidation reactions that are the primary cause of sludge formation and fuel stratification. This helps better retain the full energy value of the fuel.

ANTI-FOAMING PROPERTIES:

- Reduces fuel fill time
- Increases storage capacity of tanks

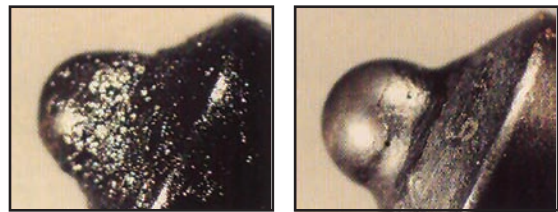
MOISTURE ELIMINATION

DEE-ZOL and **DEE-ZOL PLUS** contain an alcohol-free moisture eliminator to solve moisture and micro-organism problems. By removing freestanding water in the fuel, moisture problems and microbial contamination are eliminated. The fuel is restored to a state that promotes high performance combustion.

ADDITIONAL COLD WEATHER BENEFITS OF USING DEE-ZOL PLUS:

- Lowers cold filter plug point
- Eliminates fuel filter clogging due to cold weather wax build-up
- Improves cold weather fuel flow

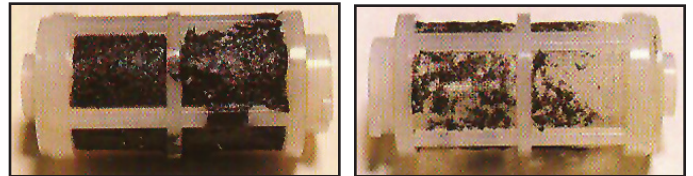
CLEANS INJECTORS



BEFORE

AFTER

REMOVES SLUDGE & MICROBIAL GROWTH



BEFORE

AFTER

DOES NOT CONTAIN METHANOL, ALCOHOL OR ISOPROPYL ALCOHOL

DOSAGE

Before refilling fuel tank, add additive (to ensure good mixing): 1 oz to 10 gallons diesel fuel; 1 quart to 320 gallons; 1 gallon to 1280 gallons. For initial treatment, use a double dosage of DEE-ZOL or DEE-ZOL PLUS to remove build up.

DEE-ZOL and DEE-ZOL PLUS are EPA registered.



We Made It First. We Make It Best.