

Bin Tracking

For Sage Accpac ERP



- Keep track of Inventory Items in multiple bins.
- Pinpoint exactly where your inventory is at any point in time.
- Reduce picking and put away errors.

What is Bin Tracking?

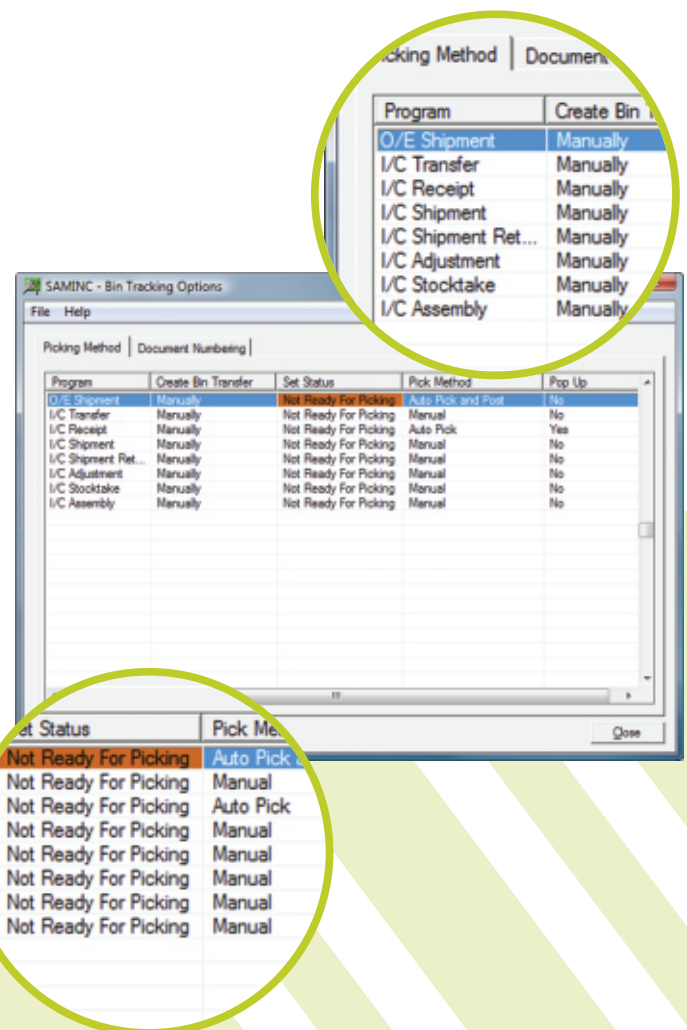
Bin Tracking allows Sage Accpac ERP users to track inventory items stored in multiple bins within a warehouse or Sage Accpac ERP Inventory Control location. Bins could include shelves, slots, containers, barrels, pallets or drawers.

The Benefits of Bin Tracking:

- Improved management of your warehouse without more work and complexity.
- Pinpoint exactly where your inventory is at any point in time.
- Warehouse tracking within Accpac so there is no need to learn how to use new software.
- Process warehouse activity more efficiently, resulting in faster turnaround times, improved customer satisfaction, lower Inventory write-offs and lower costs.
- All information is contained within your Accpac database so there is no need to maintain and reconcile multiple applications and databases.

Bin Tracking Features:

- At the Bin level, define:
 - Individual items (or all) to be kept in the bin
 - Pick order
 - Put-away order
 - Whether or not to allow receipts
 - An optional "quick entry" shortcut key to save typing long bin location codes
- Per item in a bin, configure:
 - Allowed in this bin
 - Picking sequence
 - Unit of measure
 - Re-order quantity
 - Re-order level
- Inquiries on bin quantities per item & location.
- Report on bins to be re-stocked.
- All warehouse movements tracked by bin transfer document.
- Per enabled Sage Accpac ERP Transaction, configure the system to create the Bin Transfer Document:
 - Manually
 - Automatically - During Posting



Bin Tracking

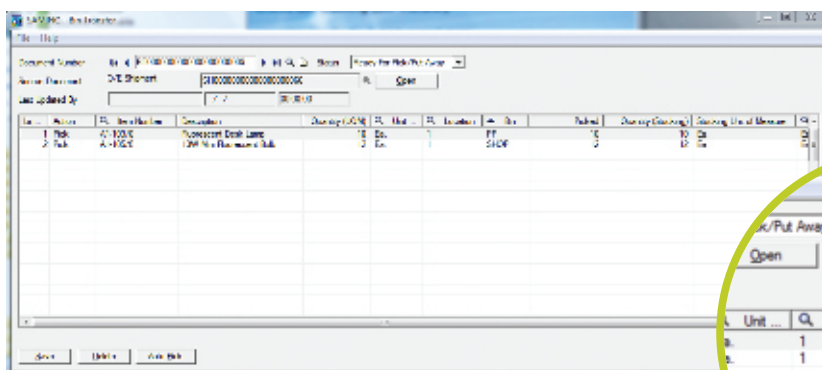
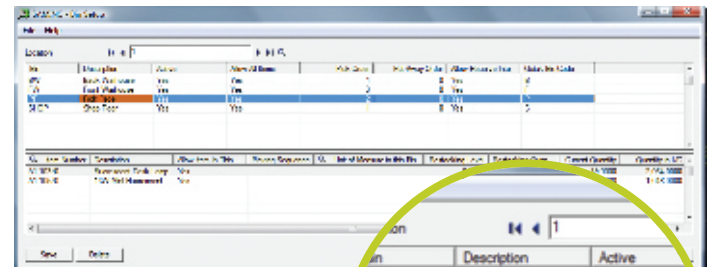
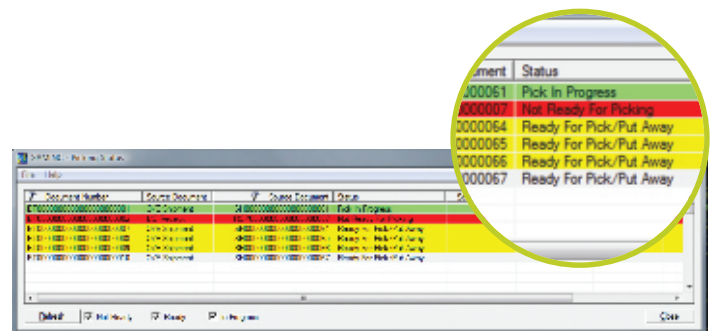
For Sage Accpac ERP



- Warehouse tracking within your Sage Accpac ERP database.
- No headaches integrating with and reconciling to third party warehouse management systems with parallel databases!

More Bin Tracking Features:

- Sage Accpac ERP Transactions enabled for Bin Tracking:
 - O/E Shipment
 - O/E Credit Note
 - I/C Receipt
 - I/C Shipment
 - I/C Transfer
 - I/C Adjustment
 - IC Stocktake
 - I/C Assembly
 - P/O Receipt
 - P/O Return
 - I/C Internal Usage
 - Supports I/C Serialized Inventory and Lot Tracking
- Per Sage Accpac ERP Transaction, configure the Bin Transfer document to:
 - Automatically pop up for completion with the Sage Accpac ERP Transaction
 - Be created for subsequent data entry
- Configurable status for creation of bin transfer documents.
- Per enabled Sage Accpac ERP Shipment, set the picking method (choice of pick location) to:
 - Auto Pick and Post
 - Auto Pick
 - Manual



Minimum Requirements:

Bin Tracking 5.6 requires Sage Accpac ERP 100, 200 or 500 Version 5.6 and Sage Accpac ERP Inventory Control v5.6. Compatible with Sage Accpac ERP Order Entry v5.6 and Sage Accpac ERP Purchase Orders v5.6. Pop up option only works in client/server mode, not web mode.

Copyright © 2010 Orchid Systems. All rights reserved.
All trademarks are registered trademarks or trademarks of their respective companies.

For further details contact your Sage Software Solution Provider...



2/273 Alfred Street, North Sydney, NSW, Australia, 2060
Tel: +61-2-9925-0383 / Fax: +61-2-9955-3926
www.orchidsystems.biz / info@orchidsystems.biz