



Summit Marine inc

Rev042310

Assembly Instructions – Cable Lift Canopy Frame



Please take a few minutes to familiarize yourself with these instructions.

These instructions are also available on the web in full color at www.summitmarine.com, tab “assm manuals”.

Contents:

- (4) Rails (2.5" x 2.5" square tubing) Main Canopy Assembly.**
- (2) End Caps.**
- (2) Bow Straps, 3/8 x 3/4 long thin straps.**
- (2) Splicer Tubes for the Main Body Rails. With 4 screws and nuts in each Splicer.**
These may be attached to the rails.
- (4) - 4' legs, with J channels.**
- (12 or 13) Long Bows, to match the number of pegs on the rails.**

Hardware attached to the End Cap, containing:

- 1. Bag: Splicer Tube**
 - (8) 3/8 x 3/4" long Hex Head Bolts.**
 - (8) 3/8 Brass Square Nuts.**

The following items are in the splicer tube:

 - (8) 3/8 x 3/4" long Hex Head Bolts & (8) 3/8 Brass Square Nuts.**
- 2. Bag: Bow attachment.**
 - (15) 1/4 x 1.5" long carriage bolts.**
 - (15) 1/4 hex nuts.**
- 3. Bag: End Cap attachment.**
 - (4) 3/8 x 1" long Hex Head Bolts.**
 - (4) 3/8 Brass Hex Nut.**
- 4. Bag: J Channel to Leg to Upright Post.**
 - (4) 3/8 x 3.5" long Hex Head Bolts.**
 - (4) 3/8 Brass Hex Nuts.**
 - (4) 3/8 x 1" long Hex Head Bolts.**
 - (4) Brass Square Nuts.**



Main Tube splicer.



Step 1: Splicer tube with (4) brass square nuts and (4) 1" bolts inserted into track for each Tube. Make sure screw is centered into hole so it will tighten down on to canopy body tube. All Bolt Heads should face up and to the inside to protect Canopy Fabric.

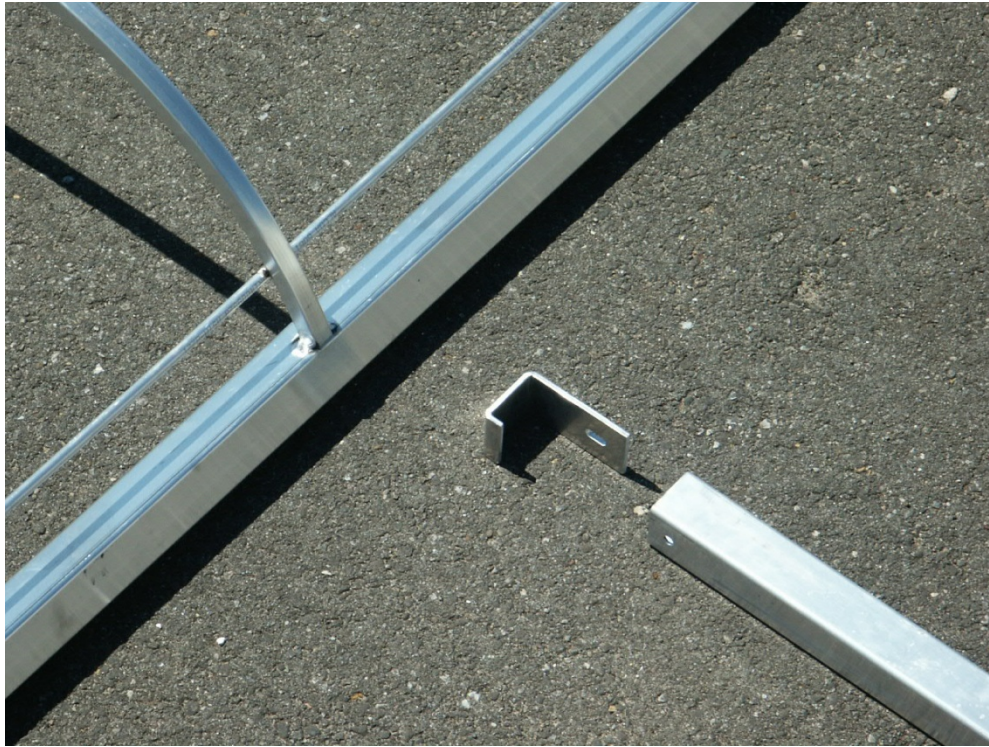
Step 2: (15) $\frac{1}{4}$ x 1.5" long carriage bolts. (15) $\frac{1}{4}$ hex nuts.
Slide bows onto the Rail Pegs as shown and attach the Bow Straps at the middle of the bows.



Step 3: (4) 3/8 x 1" long Hex Head Bolts. (4) 3/8 Brass Hex Nuts.
Bolt the End Cap to the Main Body as shown.



**Step 4: (4) 3/8 x 3.5" long Hex Head Bolts, (4) 3/8 Brass Hex Nuts.
(4) 3/8 x 1" long Hex Head Bolts. (4) 3/8 Brass Square Nuts.**



Upright Post showing 'J' Hook.

Look further down the Upright Post and notice the 1" Hex bolt and square nut for tightening the leg inside the post. Slide the 1" screws and square nuts down the Post into position where the hole is. Snug this bolt for now. You may have to remove the screw directly above this hole that holds the bracket above it and let that square nut fall into position for the canopy leg. Then loosen the screw above that one and let it fall into the bottom bracket position, repeat this procedure until you need a square nut in the very top position.

Loosely fasten J Hook to Canopy Leg using the 3/8 x 3.5" bolt, and slide into Frame Extension. Tilt J Hook to the side so Canopy Frame can rest on Leg for Canopy install. If you loosely fasten these 'J' Hooks to Canopy Legs, this will keep the leg from sliding down inside the tube.

Slide Canopy Leg into Boat Lift Upright Post. Measure and tighten to suit using 1" bolts. Allow 'J' Clamp to rotate to the side for now. Lay the assembled Canopy Frame on top of these 4 Canopy Legs and clamp the 'J' Hooks to the Main Canopy Tube, tighten and level. Check all bolts for tightness. Recheck annually. Tape all sharp edges with high quality outdoor tape to protect fabric.



Optional Canopy Diagonal Brace



Diagonal Brace layout: Parts consists of:

- (2) Main body Tubes**
- (4) 1/4" x 2" x 7.5" clamp plates**
- (4) 3/8" x 3.5" SS Bolts**
- (4) 3/8" Brass Hex Nuts**
- (2) 3/8" x 3/4" SS Bolts**
- (2) 3/8" Brass Square Nuts**
- (2) 3/8" SS Washers**

Photo of the diagonal brace (to the left). The single ear attaches to the canopy post inside the channel, using the 3/8 x 3/4" screw and brass square nut. The top of the Diagonal Brace clamps to the Canopy Tube using the 1/4" x 2" plates and 3/8 x 3.5" screw and brass hex nuts. Use the Canopy Rib to keep this clamp from sliding forward and it will 'lock' in place.

The Deep Water Bracing shown to the right of the Canopy Post will normally attach to the legs, not the Post....