

ActiveBatch®

Redefining IT AutomationSM

Driven by marketplace demands, regulatory requirements, and rapidly changing IT environments, IT organizations are automating increasingly complex business and IT operational processes that span distributed environments comprised of various applications, databases, technologies, and process types. As a result, organizations need to automate workflows in order to quickly and reliably pass data and manage dependencies between systems and technologies.

From an Elemental Approach To an Architectural Strategy

According to research by Gartner, most large organizations have more than three workload automation tools implemented in their environment. With the ever-expanding array of software and technologies most businesses use today, managing these different automation tools just adds to the IT complexity. Instead of moving forward faster with new and innovative technologies, IT departments are held back by a disjointed automation framework that is brittle and unyielding to change. In order to remain competitive and manage multiple systems and technologies, a modern “architectural strategy” is needed.

From Multiple Scheduling Tools To a Single Automation Solution

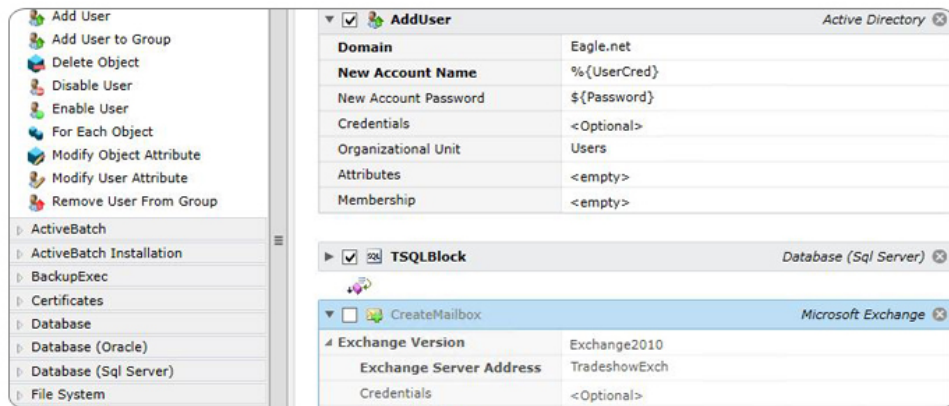
From Custom Scripting To Production-Ready Job Steps

From a Legacy Job Scheduler To a Solution Designed for Change

ActiveBatch® is Redefining IT Automation with a modern workload automation solution that consolidates silos of automation within a single framework, giving businesses the IT agility they need in today’s technology-driven world. ActiveBatch’s unique capabilities are designed to accommodate changing business and IT needs, giving users the ability to create and maintain end-to-end workflows spanning various environments, platforms, databases, and applications, via a simple but powerful, graphical drag-and-drop interface. As a result, IT organizations can minimize time-consuming manual processes and free up senior-level developers for higher level initiatives, resulting in a reduced cost of operations.

Easily Automate Workflows for Third-Party Applications, Databases and Technologies

ActiveBatch® allows IT organizations to reduce their dependency on scripting with the innovative Integrated Jobs Library. The Integrated Jobs Library provides hundreds of pre-built Job Steps with built-in logic that enables faster workflow creation and allows developers to focus on the function over the coding. The Integrated Jobs Library contains dozens of integrations for a wide-range of third-party applications, databases, and computing platforms, including support for Cloud and Hypervisors' so users can customize their ActiveBatch implementation to match their IT environment. The intuitive and graphical drag-and-drop workflow designer allows developers to easily create workflows that automate key business and IT operational processes.

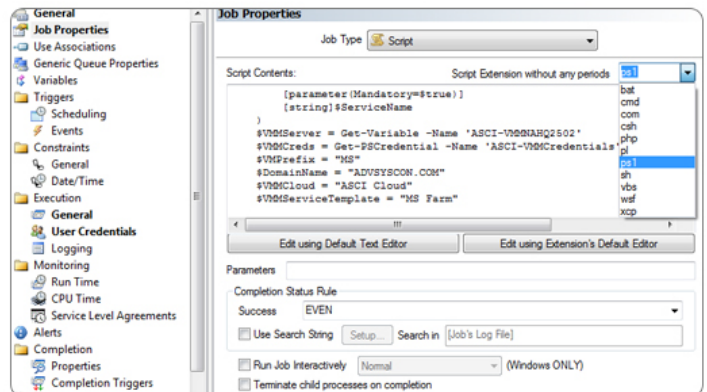


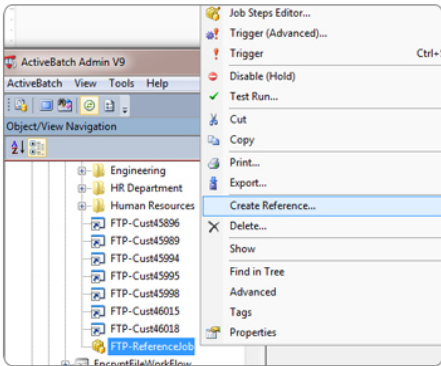
The ActiveBatch Integrated Jobs Library Drag-and-Drop Workflow Designer

The ActiveBatch Service Library extends the power of the Integrated Jobs Library with API accessibility that allows users to load and execute WSDLs and SOAP Web Services and turn them into reusable Job Steps within the Integrated Jobs Library. As a result, developers can integrate with virtually any technology or application, building more reliable workflows in half the time. In addition to Web Services, the ActiveBatch Service Library supports RESTful Services, Stored Procedures, .Net Assemblies, and command lines so developers can incorporate the exposed methods as "new" Job Steps that can be used within any workflow.

Protect Your Script Investment with Script Vaulting and Lifecycle Management

ActiveBatch is script-language independent, and therefore supports any and all scripting languages including PowerShell, VBScript, PERL, XLNT and more. While ActiveBatch provides workflow creation through the Integrated Jobs Library, we recognize most organizations have built their own libraries of custom scripts supporting critical workflows and processes. ActiveBatch understands that organizations need to protect their existing script investment and provides script vaulting, where scripts can be executed as needed and enhanced with lifecycle management capabilities. ActiveBatch's lifecycle management capabilities provide an audit trail of all revisions made to scripts and supports revision rollback so users can easily restore to any previous version.





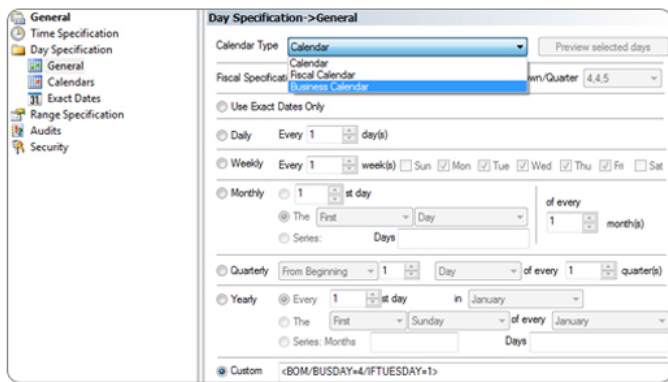
Create Reference Jobs with No Copy/Paste

Use Reference Functionality for Faster Workflow Creation

Many times when organizations are designing a workflow, they recognize the need to execute what is essentially the same job or plan for different workflows or multiple customers. Reference Object functionality allows hundreds or even thousands of “reference” jobs to mimic the same logic of the original “template” job. As a result, a single change to the template object will be passed down to each reference without the need for further action, resulting in faster workflow creation, but more importantly simplifying maintenance of these jobs going forward. Alternatively, using cut and paste, a workflow author would have to go in individually to each job or plan to make the change.

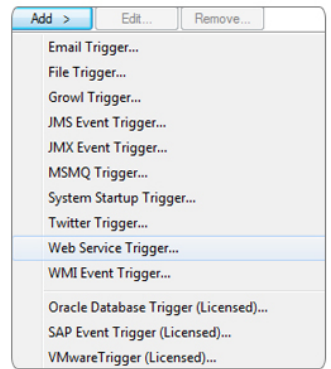
Event Automation Equals Real-Time Automation

ActiveBatch makes use of an event-driven architecture to effectively manage business and IT processes based on near real-time requirements. ActiveBatch's event automation architecture supports the triggering of jobs and plans based upon a wide array of event types (e.g. Files, E-Mails, Web Services, SAP, VMware, Message Queues).



ActiveBatch Robust Date and Time Scheduling

In addition, ActiveBatch’s versatile support for date and time scheduling allows for Gregorian as well as Fiscal Year schedules and offers a very unique Date Arithmetic for complex date associations such as “execute this job three days before the end of a fiscal quarter”.

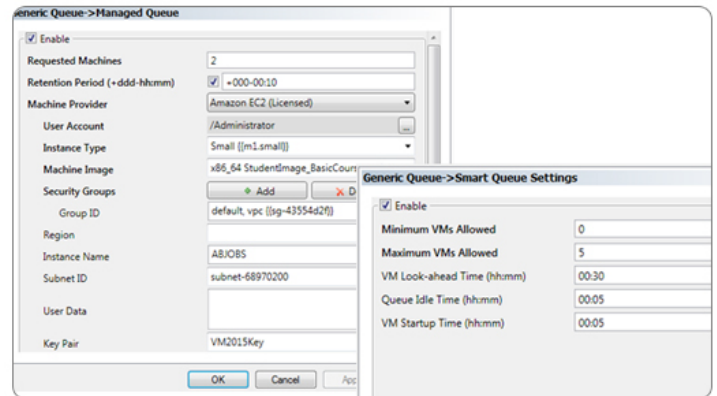


ActiveBatch Event Triggers

Cloud Management and Resource Optimization

ActiveBatch optimizes and balances computing resources to help ensure the successful execution of workflows and to maximize virtual/cloud resource usage. ActiveBatch’s Smart Queue provides for the automated provisioning and de-provisioning of virtual and cloud-based resources based on historical and predictive analytics.

For example, if a user has a plan or multiple jobs that are running longer than expected, Smart Queue will automatically spin up other machines to help that job or plan complete in the targeted time frame. On the other hand, when the job queue is empty, Smart Queue will automatically spin down idle systems to minimize waste and conserve resources. Smart Queue’s intelligent automation reduces virtual machine waste and helps organizations better meet SLAs and other critical business deadlines. ActiveBatch has built-in Extensions supporting VMWare, Amazon EC2, Microsoft Azure, and System Center Virtual Machine Manager.



Maximize Cloud and Virtual Resources with ActiveBatch’s Managed Queue and Smart Queue Functionality

ActiveBatch® Extensions

ActiveBatch Extensions offer enhanced functionalities that integrate third-party applications and technologies with existing functions in the Integrated Jobs Library as well as our Service Library.

- Amazon EC2
- IBM Cognos BI
- IBM InfoSphere DataStage
- IBM PureData System (Netezza)
- Informatica Cloud
- Informatica PowerCenter
- Microsoft Azure
- Microsoft Dynamics AX
- Microsoft SharePoint
- Microsoft System Center
 - Configuration Manager
 - Operations Manager
 - Orchestrator
 - Service Manager
 - Virtual Machine Manager
- Microsoft Team Foundation Server
- Oracle E-Business Suite
- Oracle PeopleSoft
- SAP NetWeaver BW
- SAP BusinessObjects Data Services
- Teradata
- VMware

ActiveBatch® Add-Ins

Advanced Systems Concepts offers additional ActiveBatch capabilities that customize and enhance the use of the Enterprise Job Scheduling and Workload Automation system to meet specific requirements.

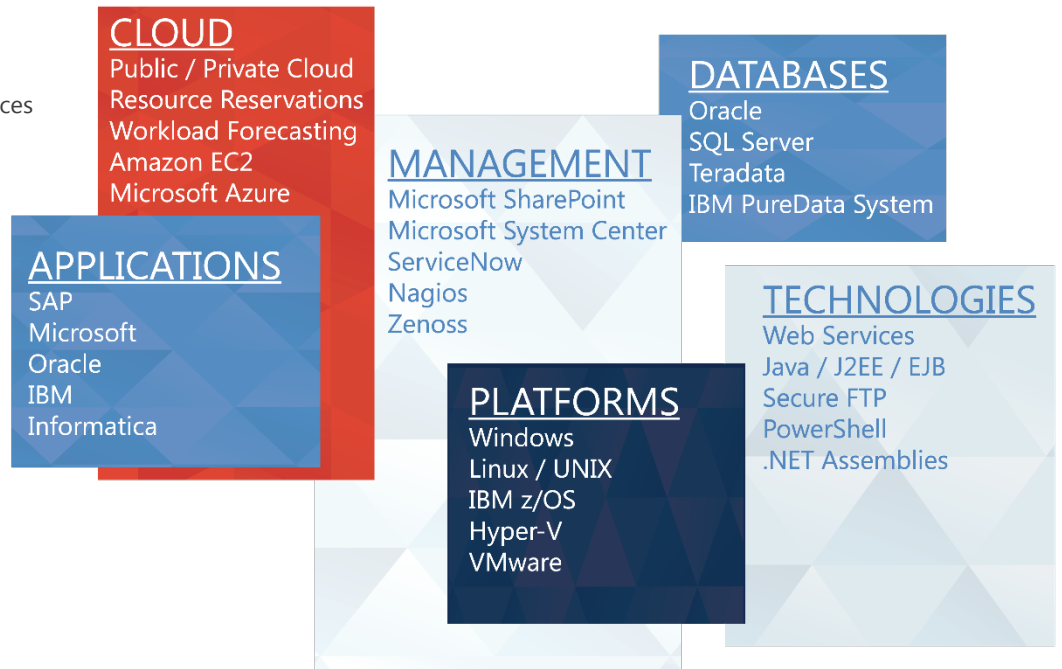
- ActiveBatch Web Console
- ActiveBatch Mobile
- Non-Cluster Failover for High Availability
- Web Services ENV
- Host-Based Licenses
- Management Packs
 - Microsoft System Center Operations Manager
 - Nagios
 - Zenoss

ActiveBatch® Service Library

The ActiveBatch Service Library enables users to consume WSDLs and SOAP web services, turning them into reusable Job Steps within ActiveBatch so users can create workflows faster without the need for custom coding. Included are:

- Web Services
- RESTful Services
- .Net Assemblies
- Stored Procedures
- Command Line Interface

IT Automation Without BoundariesSM



About Advanced Systems Concepts, Inc.

Advanced Systems Concepts, Inc. is a recognized leader in the IT Automation industry with its industry-leading workload automation solution, ActiveBatch. Founded in 1981, Advanced Systems Concepts has developed cutting-edge products across the breadth of customer markets for more than 34 years. Today, Advanced Systems Concepts has over 1,700 customers in 46 countries and is recognized by leading analysts such as Gartner, Forrester, and EMA.

Learn More About ActiveBatch!

www.ActiveBatch.com | info@advsyscon.com | +1-973-539-2660