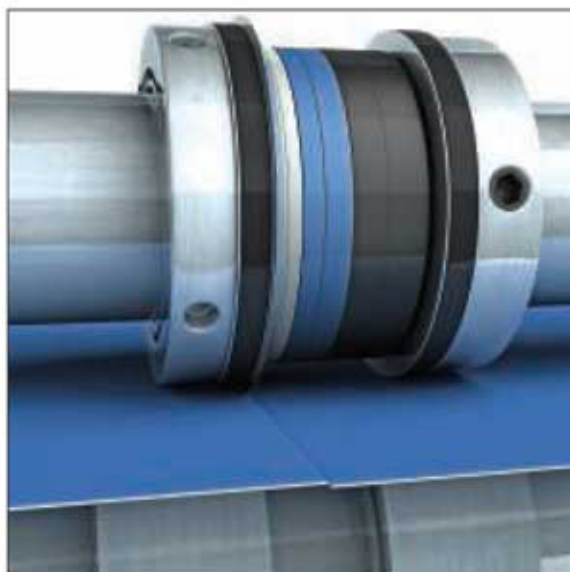


4 Single slitting set-up

Always ensure that the cutting boss is pushed firmly against flat side of blade

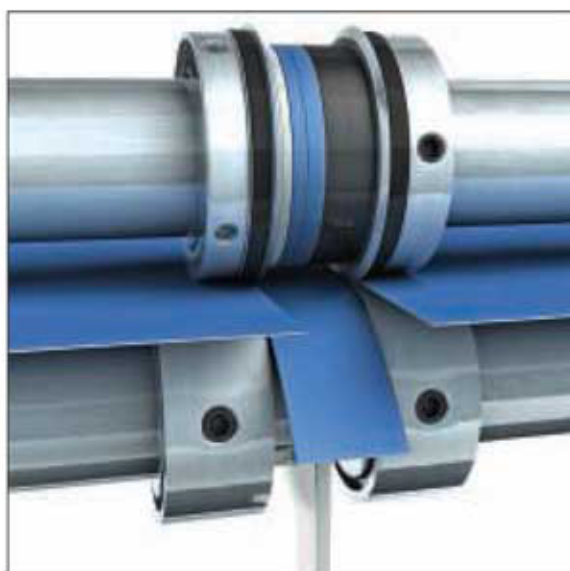
Carry out all setting procedures very carefully to avoid unnecessary damage to either blade or boss.



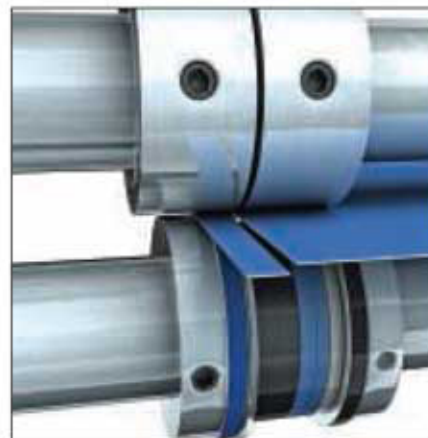
5 Double cut set-up

Slide on special 5mm waste guide (4mm version available on request for narrow cut-outs)

The shape may differ for each version.

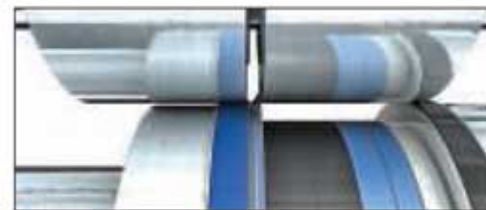


6 Edge trimming set-up



KEY TO PROCEDURE

At least 50% of the sheet must be free from supporting collars on the side of the edge trim. Failure to adhere to this will greatly affect the consistency of trimming.



The following procedure is different to conventional methods of edge-trimming and is designed to produce a trouble free and much improved quality cut.

Assemble as illustrated for left side of sheet trim.

*Use scriber tool to extract black gripper band and substitute with blue version.

*The flat side of blade must face inward and the bevel outward towards the waste strip.

*The right side cutting boss must make contact with flat side of blade.

*The left side cutting boss must minimally stop short of making contact with the bevelled side of blade.

*Your existing waste deflector should be applied as we do not supply one (please call your folding machine manufacturer for details)

Reverse this set up procedure for right sided edge-trimming.

Multi-Tool Instruction Guide



A Cutting blade

Your Multi-Tool comes with heavy duty cutting blades.

B Spacer rings

The spacer rings are used to change the distance between blades when performing a double cut or perforation.

C Micro-perforation blade

Your Multi-Tool comes with 3 micro-perforation blades; 17tpi, 25tpi and 52tpi.

D Blade fixing positions

E Gripper Band

Substitute with the blue version For Edge Trimming using the scriber tool (I).

F Cutting bosses

G Nylon sleeve/holder

This keeps your blades in top condition.

H Waste guide

This stops waste material from wrapping around your machine.

I Scriber tool

Use this to change the rubber grippers.

Please read carefully before installation

The following instructions cover all options relating to the Multi-Tool full pack.

If you have purchased Multi-Tool option 1 or 2 please retain this leaflet in case of future upgrades.

IMPORTANT NOTES

- 1) Before using your Multi-Tool please ensure that sufficient and even pressure is applied to your folding machines slitter shafts.
- 2) In order to prevent any or either of the Male/Female collars from unscrewing during production please ensure that they are attached in the correct way.

Easy rule to remember

When applying a collar to the top slitter shaft the fixing screw should always be on the right side.

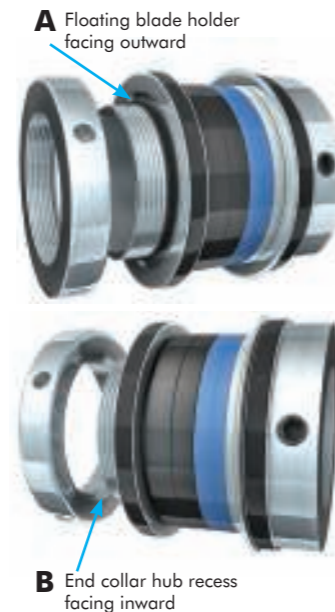
When applying a collar to the bottom slitter shaft the fixing screw should always be on the left side.

When applying a single blade to Male blade holder always ensure that;

- A) The unused floating blade holder is reversed; this prevents damage to the nylon spacer rings
- B) The end collar hub recess is inward; this houses the outward facing and unused floating blade holder

When applying two blades to Male blade holder always ensure that the floating blade holder is facing inwards

All nylon rings not in use must be retained outside of the floating blade holder at all times.



1 Single micro-perforation set-up

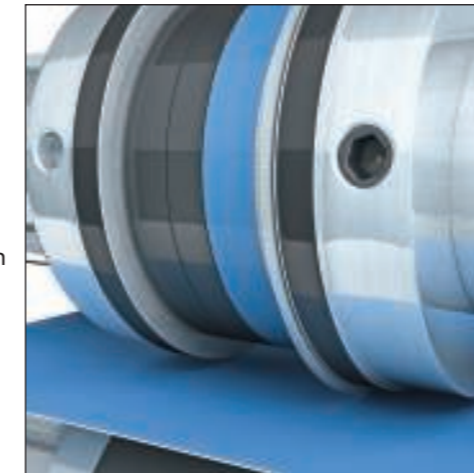
Applying too much shaft pressure increases unnecessary wear to the nylon sleeve.

Applying light pressure may lead to insufficient results.

The blade should only impress enough to allow minimal penetration into the nylon sleeve below.

Choose the relevant perforation blade for the material you are processing through the machine.

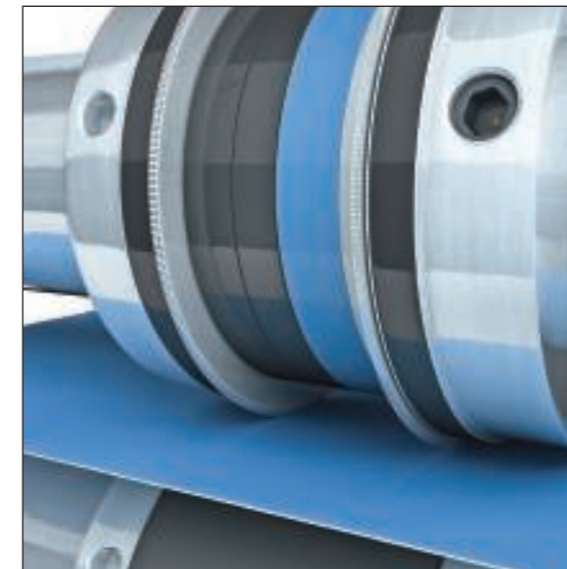
Guidelines: 17tpi - Heavy weight material
25tpi - Medium weight material
52tpi - Light weight material



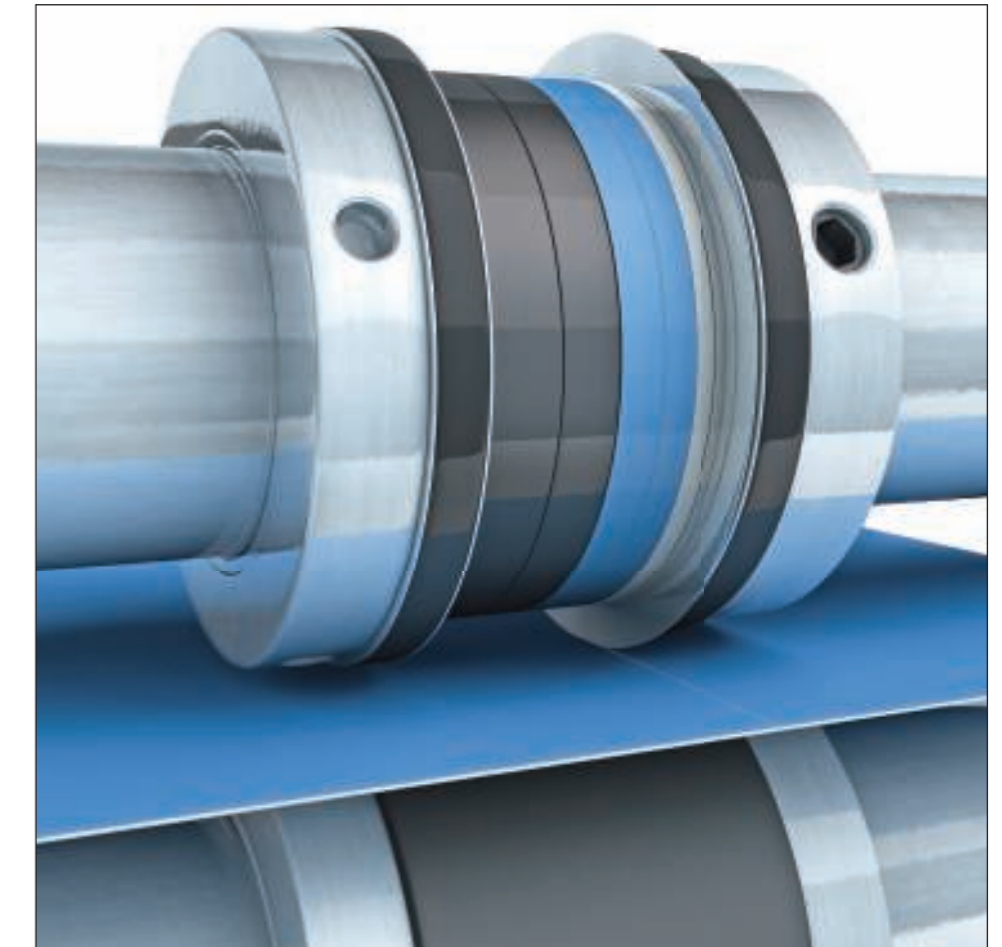
2 Double micro-perforation set-up

Apply same rules as option 1.

Choose the relevant perforation blade for the material you are processing through the machine. (see guidelines above)



3 Kiss Cut set-up



Assemble device exactly as in option 1 only insert special kiss-cut blade instead.

If shaft pressure is set correctly the

blade will penetrate through only half of the sheet.

The blade should make no contact with the nylon sleeve below.