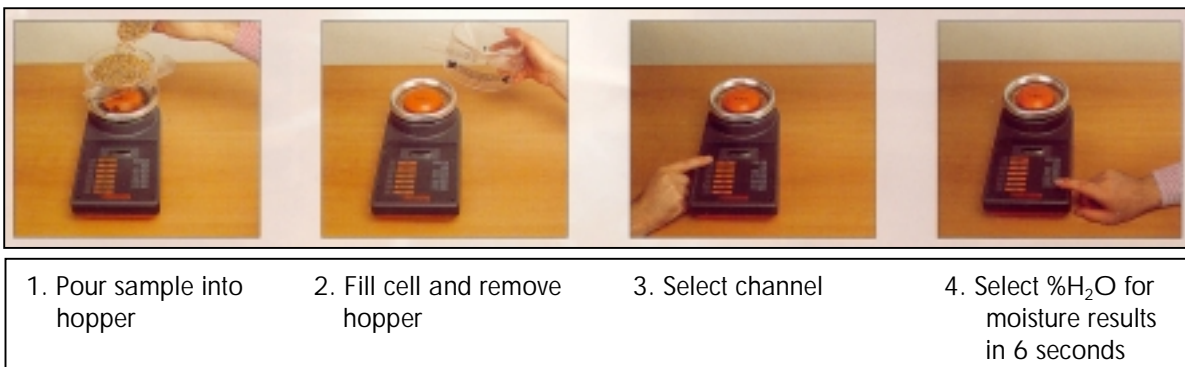


Sinar AP6060 Moisture Analyzer

QUICK START-UP GUIDE



1. Press the key marked **(I)** to turn the instrument on. (display should read **-HI-**).
2. Place the hopper (clear plastic funnel) on top of the sample cell.
3. Close the slider on the hopper.
4. Pour the sample into the hopper.
5. Empty the hopper into the sample cell by releasing the slider.
6. Sample should fill the sample cell evenly below the level of the orange cap (brush any sample off the top of the orange cap into the sample cell).
7. Remove the hopper.
8. Press channel number 1-7 to select product.
9. Press the **%H₂O** key for result, which will display in 6 seconds.