

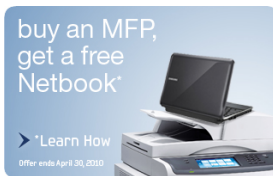


Imagine centralized workflow solution.

buy an MFP, get a free Netbook*
 fast copy
 less space
 vivid colour scan & network scan



Imagine a high - speed, high - end A4 Copier MFP that could centralize your printing workflow. MultiXpress 6545N delivers fast printouts, but with full multifunction features like Duplex and Copying. And it features Samsung's document management solutions like SmarThru and SyncThru. With this digital solution at the centre of your business, you can eliminate your A3 DMFP and maximize your productivity. With Samsung MultiXpress 6545N, it's not that hard to imagine.



buy an MFP, get a free Netbook*

Purchase or Lease a new Samsung SCX-6345N or SCX-6545N or SCX-6555N or CLX-8380ND or a CLX-8540ND from January 1st – April 30th, 2010 and receive a Samsung N310 Netbook for FREE. For full details on the offer and to download the rebate form, please click here.

fast copy



The MultiXpress 6545N produces 43 ppm in black and white. Moreover, the MultiXpress 6545N performs nearly all the copy functions that are generally operated on A3 DMFP.

less space



Office space is also a big issue. In general, A3 DMFP occupies more office space. Typically, the footprint of a mono A3 capable device is much larger than that of an A4 device. MultiXpress 6555N / 6545N's economical design takes up to 75% less space in your office than general A3 DMFPs so you have more room around you.

vivid colour scan & network scan

The MultiXpress 6545N's enhanced scanning resolution (4800 x 4800 dpi) and colour CCD method reproduce your document at its finest quality.

reliable printers

Model	Max. Monthly Duty Cycle
6545N	200,000 prints

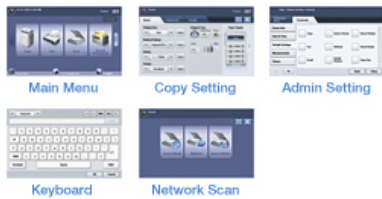
We'll take the hassle away. Samsung's leading edge printing technology will let you focus on your work whilst it delivers your documents time and time again. All of the printers within the MultiXpress series provide unparalleled reliability with high monthly duty cycles (see table below). This is because Samsung has designed the machines to be less service

dependent, providing fewer down time periods within its life-cycle along with less paper jams or mis-feeds. In fact, we are confident that the only time you will open up your printer is to change the cartridge rather than to fix a paper jam.

fast fax (option)

The optional fax kit offers speed dial up to 200 numbers, group dial up to 100 groups (up to 200 locations per group), duplex send and receive, fax - e-mail and many other useful features. The Duplex function enable the incoming fax be printed doublesided? Save your printing cost!

wide touch screen / UI design



convenient installation

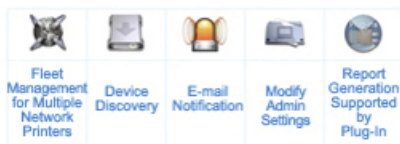


scan to anywhere



The MultiXpress 6545N helps to distribute document efficiently by scanning directly to e-mail, FTP, SMB or client.

SyncThru Admin 5



SyncThru™ Web Admin service allows IT managers to easily manage and monitor all printers / MFPs on the network. The powerful feature permits job accounting, usage metering, authentication, storage management, remote driver installation and modification settings.

paper handling

Adding optional paper trays to store up to 3240 sheets of paper at one time, reduce the frequency to refill paper.

Modular system

The modular design make it easy to replace consumables, adding accessory and / or upgrade package. For example, finisher or memory can be easily slotted onto the main device.

paper jam

If and when a paper jam occurs the device indicates the problem area on the user display so you can simply, open the tray door to remove.

expanded printing



• Capabilities with hard disk solution: The standard 80 GB HDD ensures smooth print traffic in a busy office and print environment.

SyncThru Web service



It provides administrators with the ability to change network and individual printer settings, upgrade firmware and view network printer / MFP status.

SmarThru Office



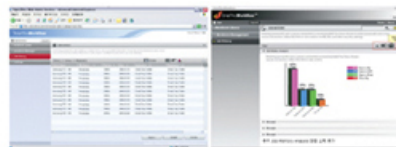
It provides administrators with the ability to change network and individual printer settings, upgrade firmware and view network printer / MFP status.

document box



Store scanned data into HDD and manage the stored data (printing / sending).

SmarThru Workflow (option)



SmarThru™ Workflow streamlines the document capture process route system enabling easy document management. This additional software is provided with the Samsung network scan kit.

fast print



Printing black - and - white document at 43 ppm (Simplex) and 38 ppm (Duplex) your workloads can be completed efficiently. The numerous standard printing features help you to print document more easily and efficiently.

Overview	Function	Copy, Print, N / W Print, Color Scan, Fax (optional)
Print	First Print Out Time (Mono)	less than 8 seconds (from Ready mode)
	Resolution	up to 1200 x 1200 dpi, effective output
	Duplex	standard
	Emulation	PCL5e, PCL6, PostScript 3, TIFF, JPG, PDF v 1.4
	Speed (Mono)	Simplex: up to 43 ppm in A4 (45 ppm in letter) Duplex: up to 38 ipm in A4 (40 ipm in letter)
Copy	First Copy Out Time (Mono)	less than 5 seconds
	Zoom Rate	25 ~ 400% (Platen), 25 ~ 200% (ADF)
	Duplex Copy	built-in
	Copy Features	ID Copy, Clone Copy, Watermark Copy, Form Overlay Copy, Auto Crop Copy, N - up Copy, Poster Copy, Booklet
		up to 600 x 600 dpi
	Speed	up to 43 cpm in A4 (45 cpm in letter)
	Multi Copy	1 ~ 999
Scan	Compatibility	Twain standard, WIA standard
	Method	color flatbed scanner or DADF
	Resolution (Optical)	up to 600 x 600 dpi
	Resolution (Enhanced)	up to 4800 x 4800 dpi
	Scan to	HDD, USB, e-mail, client, SMB, FTP

Fax	Compatibility	ITU-T G3	
	Modem speed	33.6 Kbps	
		mono: up to 300 x 300 dpi color: up to 200 x 200 dpi	
	Memory	HDD store	
	Auto Dial	speed dial: 200 locations	
	Fax Feature	On hook Dial, Auto Redial, Last Number Redial, Mail Box, Auto Reduction, Multi - send, Delayed Send, Fax forwarding (server / e-mail / fax)	
Paper Handling	Input Capacity and Types	520 - sheet cassette, 100 - sheet multi-purpose tray	
	Output Capacity and Types	up to 500 - sheet face down	
	Media Size	98 mm x 148 mm ~ 215.9 mm x 355.6 mm	
	Media Type	Plain, Thin, Envelopes, Labels, Card Stock, Bond, Archive, Punched, Pre - Printed, Recycled, Transparency, Letterhead, Thick, Colored	
	ADF Capacity	100 - sheet DADF	
	ADF Document Size	width: 145 ~ 216 mm length: 145 ~ 356 mm for single page scan 145 ~ 400 mm for multi pages scan	
General	LCD	800 x 480, 7" WVGA color touch - screen LCD	
	Memory / Storage	256 MB / 80 GB HDD	
	OS Compatibility	Windows 2000 / XP / 2003, Server / Vista various Linux OS Mac OS 10.3 ~ 10.5	
	Interface	hi - speed USB 2.0, Ethernet 10 / 100 / 1000 base TX, USB host (scan to USB, USB print)	
	Noise Level	less than 55 dBA (printing) less than 57 dBA (copying) less than 37 dBA (standby)	
	Dimension (W x D x H)	641 x 494 x 607 mm	
	Weight	48.2 kg - with consumables	
	Duty Cycle, Monthly	up to 200000 pages	
	Consumables	Yield	toner: average cartridge yield 25000 standard pages. *drum: 80000 pages (ships with 25000 page starter toner and 80000 page drum)(1)
		Type	2 - piece cartridge
Model Code		toner: SCX-D6555A drum: SCX-R6555A	
Options	Options	256 MB memory: ML-MEM 160 optional cassette feeder (x3): SCX-6555A high capacity feeder: SCX-HCF100 fax kit: SCX-FAX210 finisher: SCX-FIN11 staple cartridge: SCX-STP000 stand Short type: SCX-DSK10 stand Tall type: SCX-DSK10T TFDI kit: SCX-KIT20F SmarThru Workflow v. 1.0: SCX-KIT11S JScribe S / W enabler: SCX-KIT10J	

Features and specifications are subject to change without prior notification.

(1) Declared yield value in accordance with ISO / IEC 19752.