



imagine a workgroup MFP that
isn't afraid of a little hard work.

MultiXpress 6555N Monochrome Laser Multifunction Printer



Samsung MultiXpress 6555N

Monochrome Laser Multifunction Printer

Imagine a workgroup MFP that can handle even the most complex hardcopy output tasks without missing a beat. The Samsung MultiXpress 6555N delivers reliable high performance with a 250,000 pages-per-month duty cycle, a 3,240-sheet paper capacity and speeds up to 55 pages per minute. And its open architecture makes it customizable to your unique workflow needs. Add a card reader. Fax prescriptions and archive scans at the touch of a button. They're solutions that make your job process faster, easier and more error-free. With the Samsung MultiXpress 6555N, it's not hard to imagine.

A flexible printer.

Open Architecture Design Customize touchscreen applications to make workflow easier. Enhance security by using a custom application such as a badge reader or bio recognition. Use a card swipe to keep track of throughput. Scan and auto send documents to team members without a computer. Fax prescriptions or archive scans for greater accuracy and time savings. Access your network to print documents or forms without a computer. And much more. (Custom applications require software development kits, and third-party development partners are required for implementation.)

Who We Built the MultiXpress 6555N for:

The MultiXpress 6555N is for medium-sized businesses, especially in the legal, finance and government fields, who need a reliable, high-volume MFP that can be customized to their specific needs.



Fast Printing Time is money and at 55 pages per minute, you can work quickly and efficiently. The MultiXpress 6555N has many standard printing functions built in, you can do more than you thought you could with your printer.



55 PPM

Large Duty Cycle and Capacity The MultiXpress 6555N can churn out stacks of documents at a rate of 250,000 pages per month. And the 3,240-sheet maximum capacity (with optional cassettes) means longer non-stop printing.

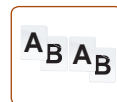
Auto Duplex Savings Save money by printing on both sides of the paper. Save time by using the auto document feeder. Load and print 100 sheets at a time. Even incoming faxes can be printed duplex.



80 GB Hard Drive for Expanded Printing and Security

The standard 80 GB hard drive enables the Samsung MultiXpress 6555N to do more than you expect. You'll have functions like collate printing, proof printing, delayed printing, confidential printing and job storage (password protected secure printing).

The standard 80 GB hard drive also increases your ability to manage and monitor network print jobs. Using the simple interface, print jobs can be monitored and controlled from anywhere on the network. Print jobs can be stored on the MFP's hard drive, and you can delay printing until you're able to retrieve them, to increase security and confidentiality.



Collate Printing



Proof Printing



Delayed Printing

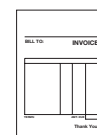


Confidential Printing



Store Job

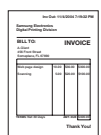
Overlay Printing You can also store forms directly on the hard drive for use with our Forms Overlay feature, so you can update forms easily, and everyone on the network will have access to the latest versions.



Form Stored on Printer



Data from PC



Printed Output

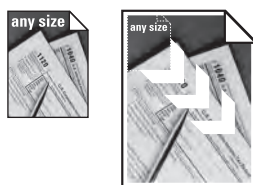
A versatile copier.

Legal Size Platen Just lay your legal size original on the legal size glass, and make true 1-to-1 copies, without having to feed your legal size originals through the document feeder. You aren't limited to 8-1/2" x 11" size documents.

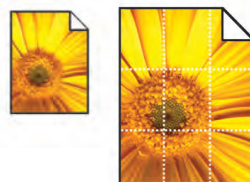
ID Copy Copy both sides of an ID, driver's license or passport onto one side of the page. It saves paper. It saves time.



Auto-Fit Copy Copy any size original, then print it full size on a sheet of letter, legal or any other size paper in the paper tray.



Poster Copy You don't need a giant printer to make a giant poster. The MultiXpress 6555N prints your image on several sheets that form one big poster.



Clone Copy Quickly copy one image and print it multiple times on the same sheet of paper. No additional software required.



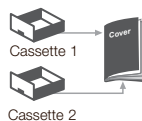
Margin Shift Want to copy documents or images and put them into a binder? The MultiXpress 6555N can add a margin, so you don't have to punch holes in your words or pictures.



Auto Suppress Copy an article from a newspaper or magazine and remove its background. You get a clean copy, suitable for inclusion in presentations.



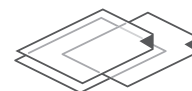
Cover Copy Print the text of a large document or booklet from one tray, and the cover on a different size and weight paper from the other tray.



Book Copy No need to reposition the book for each page. You can copy left pages only, right pages only, or both at once.



Transparent Film Copy Need to make a copy of a transparency? It's simple with the MultiXpress 6555N.



Booklet Copy Turn any document into a booklet. The MultiXpress 6555N can reduce each page by 50%, then print them side-by-side with the proper spacing and in the correct order, so you can fold, staple and distribute booklets efficiently.



Outline Erase Copy Makes clean copies, without lines or shadows from binder holes and staples.



A powerful fax.

Fax Options Do it all with the MultiXpress 6555N. Speed dial up to 200 numbers, group dial up to 100 groups, duplex send and receive, fax-to-email, secure fax and colour fax. And the Duplex function lets you print received faxes double-sided, to reduce your operating costs.

Secure Fax With the Secure Fax feature, all incoming faxes are held in memory until you access them with your password.



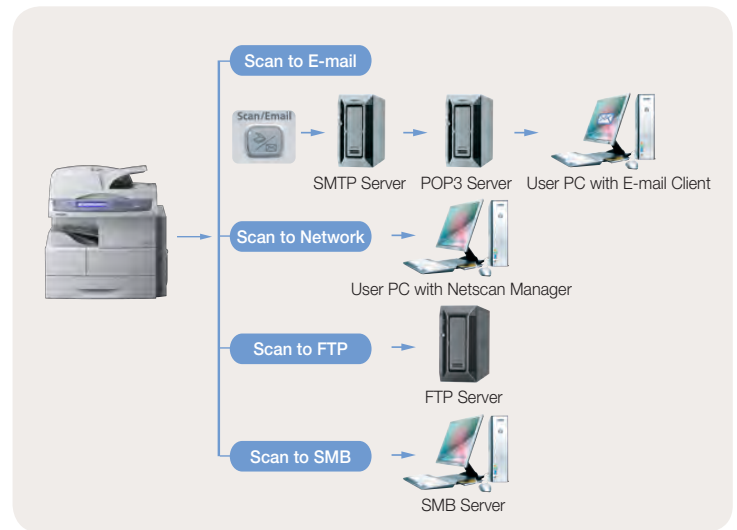
An efficient scanner.

Colour Scanner Enhanced scanning resolution (up to 4800 x 4800 dpi) and colour CCD give you the finest quality images for your documents. Scanning is also an easy way to capture and store information from hard copy documents.

Colour Scan to Network Store and share documents easily by converting them to PDF, TIFF or JPEG files. Then send the files directly to any server or PC, or anywhere else on your network.

Network Scan Management with LDAP Scan-to-email provides address book function using an LDAP server. With this feature, the most up-to-date email address book will always be available. PDF, JPEG and TIFF file formats are supported for digital scanning, and settings for SMB (Server Message Block), FTP and LDAP servers should be executed through SyncThru™ Web Service.

Scan to Anywhere The MultiXpress 6555N supports efficient distribution of scanned documents by allowing you to send them through email, FTP, SMB and Client.

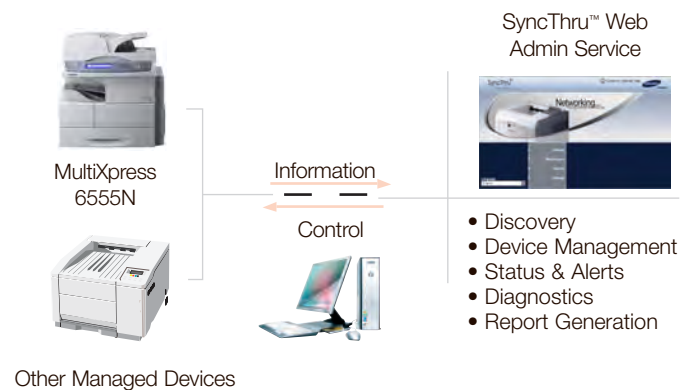


So many features. And so easy to use.

SyncThru™ Web Admin Service SyncThru™ Web Admin service allows IT managers to easily manage and monitor all printers/MFPs on the network. This powerful feature supports job accounting, usage metering, authentication, storage management, remote driver installation and modification settings. You can also easily change network and individual printer settings, upgrade firmware and view network printer status.

SmarThru™ Office Document Management Software

This powerful document management application for Office users creates, stores and edits scanned images, then delivers them to each application. It also makes it easy to take advantage of all the features of the MultiXpress 6555N, even with complicated networks. SmarThru™ Office also provides network scan as a default, so you don't have to install additional applications. And SmarThru™ client lets users scan documents directly to their PC.



Secure Hard Drive Features The standard 80 GB hard drive increases your ability to manage and monitor network print jobs. Using the simple interface, print jobs can be monitored and controlled from anywhere on the network. Increase security and confidentiality for print jobs when they're stored on the MFP's hard drive and delay job printing until you're available to retrieve them. You can also store forms directly on the hard drive for use with our Forms Overlay feature, so everyone on the network has instant access to the very latest forms.

50-Sheet Finisher and Stapler (Option) Collate and staple documents up to 50 pages thick automatically. The integrated stapler will help you finish up large jobs in no time.

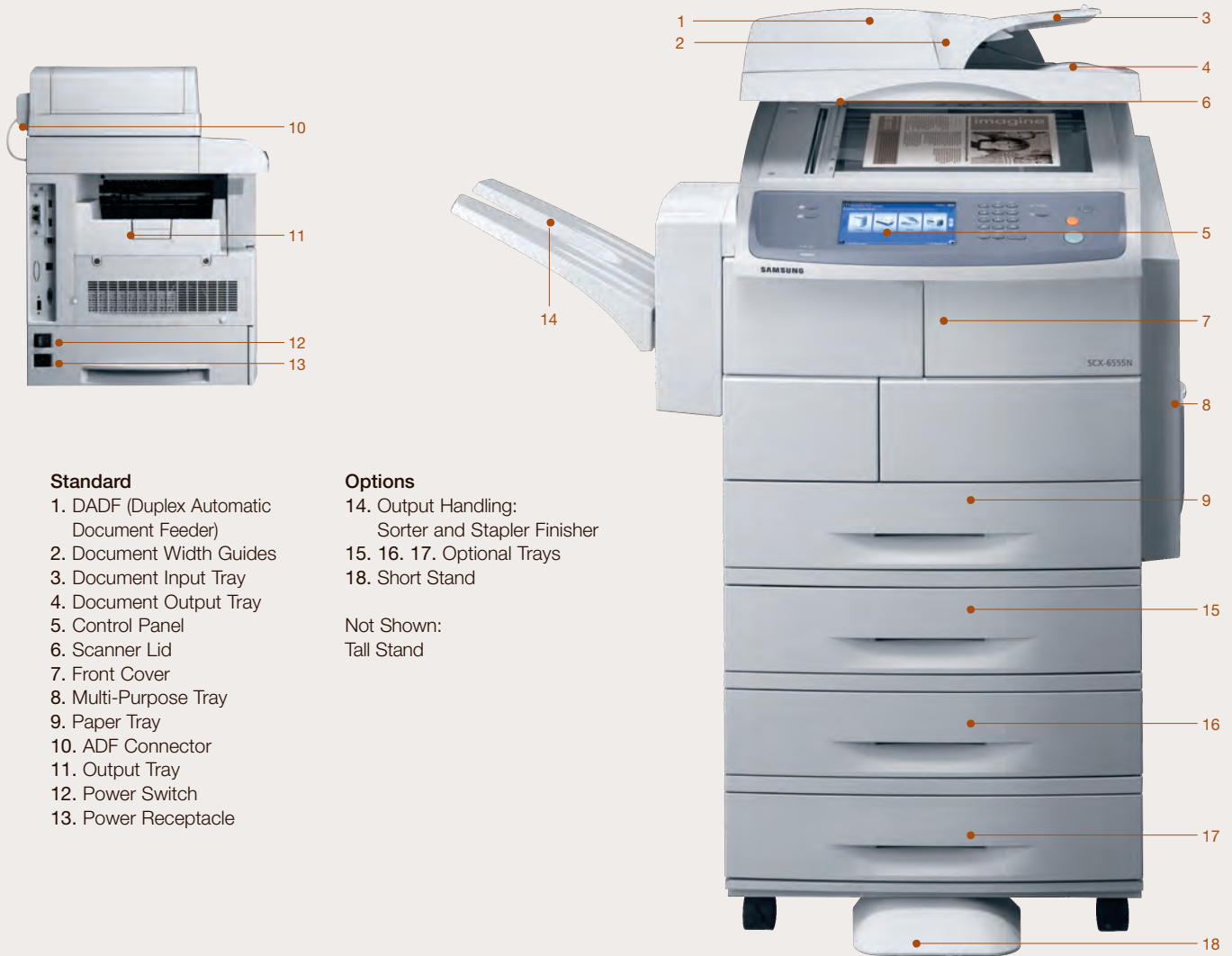
 Fleet Management for Multiple Network MFP	 Device Discovery	 Email Notification	 Modify Admin Settings	 Report Generation Supported by Plug-in
 Remote Configuration and Monitoring of Network MFP	 Use Popular Web Browsers without Installing Extra Software	 Modification Enabled by Authorized User (Password Protection)	 Print Out Configuration Sheet of Network MFP	 Firmware Upgrade of MFP and Network Card

The most important feature is the logo.

Of the many features the Samsung MultiXpress 6555N offers your business, the most useful feature of all is the fact that when you really need it, the MultiXpress 6555N will be there for you. Samsung leads the industry in reliability and dependability. Year after year, Samsung wins reliability and design awards from the most knowledgeable and trusted organizations in the industry, including PC World and BLI (Buyers Laboratory, Inc.).

Samsung invests billions (more than \$6 billion last year) into R&D every year, creating innovative, reliable and beautifully designed machines your business can count on. And every year, we offer you the very latest technical advances, all to make it easier for you to do your job. Today, and tomorrow as well.

MultiXpress 6555N Features



Standard

1. DADF (Duplex Automatic Document Feeder)
2. Document Width Guides
3. Document Input Tray
4. Document Output Tray
5. Control Panel
6. Scanner Lid
7. Front Cover
8. Multi-Purpose Tray
9. Paper Tray
10. ADF Connector
11. Output Tray
12. Power Switch
13. Power Receptacle

Options

14. Output Handling: Sorter and Stapler Finisher
15. 16. 17. Optional Trays
18. Short Stand

Not Shown:
Tall Stand

Easy-to-Use Control Panel



- Touch screen operation is easy to learn and navigate, making user training a snap.
- Manage your jobs right from the control panel. Move important jobs to the top of the queue for maximum efficiency.
- Advanced fax functions such as email forwarding can be easily managed from the touch screen control panel.

Specifications

MultiXpress 6555N			
Overview			
Function	Print, Scan, Fax (Option), Copy, Network, Duplex		
Print			
Speed (Mono)	Up to 55 ppm in Letter		
First Print Out Time	8 seconds (from Standby mode)		
Resolution	Up to 1200 x 1200 dpi Effective Output		
Emulation	PCL5e, PCL6, PostScript 3, PDF 1.4, TIFF		
Duplex	Standard		
Copy			
Speed	Up to 55 cpm in Letter		
Resolution	Up to 600 x 600 dpi		
First Copy Out Time	Less than 8 seconds		
Zoom Rate	25~400% (platen), 25~200% (ADF)		
Multi Copy/Duplex Copy	1~999/Standard (1:2, 2:2, 2:1)		
Copy Features	ID card copy, Auto Fit, Margin Shift, Book Copy, Covers, Transparencies, Auto Suppression, Booklet, N-Up, Clone, Poster		
Scan			
Compatibility	TWAIN standard, WIA standard		
Method	Colour CCD		
Resolution (Optical/Enhanced)	Up to 600 x 600 dpi/Up to 4800 x 4800 dpi		
Scan To	Email, FTP, SMB, Client		
Fax			
Compatibility/Modem Speed	ITU-T G3, Super G3/33.6 Kbps		
Resolution	Up to 300 x 300 dpi		
Memory	HDD Store		
Auto Dial	1-touch dial: 40 locations, Speed dial: 200 Locations		
Fax Features	Junk Fax barrier, Fax Forward to e-mail, Broadcasting up to 249 locations, Polling, Mail Box, On Hook Redial, Auto Redial, Last Number Redial		
Paper Handling			
Input Capacity and Types	Main Tray: Up to 520 sheets, MP Tray: 100 sheets, High Capacity Feeder: 2,100 sheets		
Max Paper capacity	3,240		
Output Capacity and Types	500-sheets Face Down		
Media Size	Print: Letter, Legal, Oficio, Folio, A4, JIS B5, ISO B5, Executive, A5, Statement, A6, PostCard 4 x 6, Envelope B5, Envelope Monarch, Envelope COM-10, Envelope DL, Envelope C5, Envelope C6, Custom; Fax: Letter, A4, Legal		
Media Type	Plain Paper, Thin, Thick, Bond, Punched, Pre-Printed, Recycled, Envelope, Transparency, Label, Card Stock, Letterhead, Cotton, Colour, Archive		
ADF Capacity	DADF 100 sheets		
ADF/Document Size	Single pass colour scanning/Single Page Scan: Width: 5.7"~8.5", Length: 5.7" ~ 14.0"; Multi Pages Scan: 5.7"~15.7"		
General			
Control Panel	800 x 480 7" WVGA Colour Touch Screen		
Hard Drive	80GB HDD		
Memory (Min./Max.)	256 MB/512 MB		
OS Compatibility	Windows 98/Me/2000/XP(32/64bit)/2003 Server (32/64bit)/Vista, Various Linux OS, Mac OS X 10.3~10.4		
Interface	Hi-Speed USB 2.0, Ethernet 10/100 BaseTX, USB Host 2.0 (Scan to USB, USB print)		
Noise Level	Print: Less than 55dBA, Copy: Less than 57dBA, Standby: Less than 37dBA		
Duty Cycle, Monthly	Up to 250,000 pages		
Dimension (W x D x H)	24.9" x 19.7" x 25.3" (Base MFP)		
Weight	106 lbs.		
Security			
Secure Features	Secure Printing, Time-Date-ID Stamp		
Authentication	LDAP (Lightweight Directory Access Protocol)		
Consumables			
Yield	Toner: Average Cartridge Yield 25,000 standard pages. Declared yield value in accordance with ISO/IEC 19752 Drum: 80,000 Pages		
Type	2-piece Cartridge		
Model Code	Toner: SCX-D6555A, Drum: SCX-R6555A		
Options			
SCX-S6555A SCX-HCF100 SCX-KIT11S SCX-FAX210 SCX-FIN11S	Optional 520-Sheet Second Paper Cassette (Up to 3) 2 100-Sheet High Capacity Paper Feeder 512 MB Memory Fax Kit Finisher Stapler	SCX-FIN10S SCX-STP000 SCX-DSK10S SCX-DSK10T	Finisher Stapler Staple Cartridge Refill Short Stand Tall Stand with Storage

Product Support: 1-800-SAMSUNG
www.samsung.com/ca/mfp

SAMSUNG Toner Recycling Program
www.samsung.com/ca/star



©2009 Samsung Electronics Canada, Inc. All Rights Reserved. Samsung is a registered trademark of Samsung Electronics Co., Ltd.
Screen images are simulated. Specifications and design are subject to change without notice. See www.samsung.com for detailed information.

