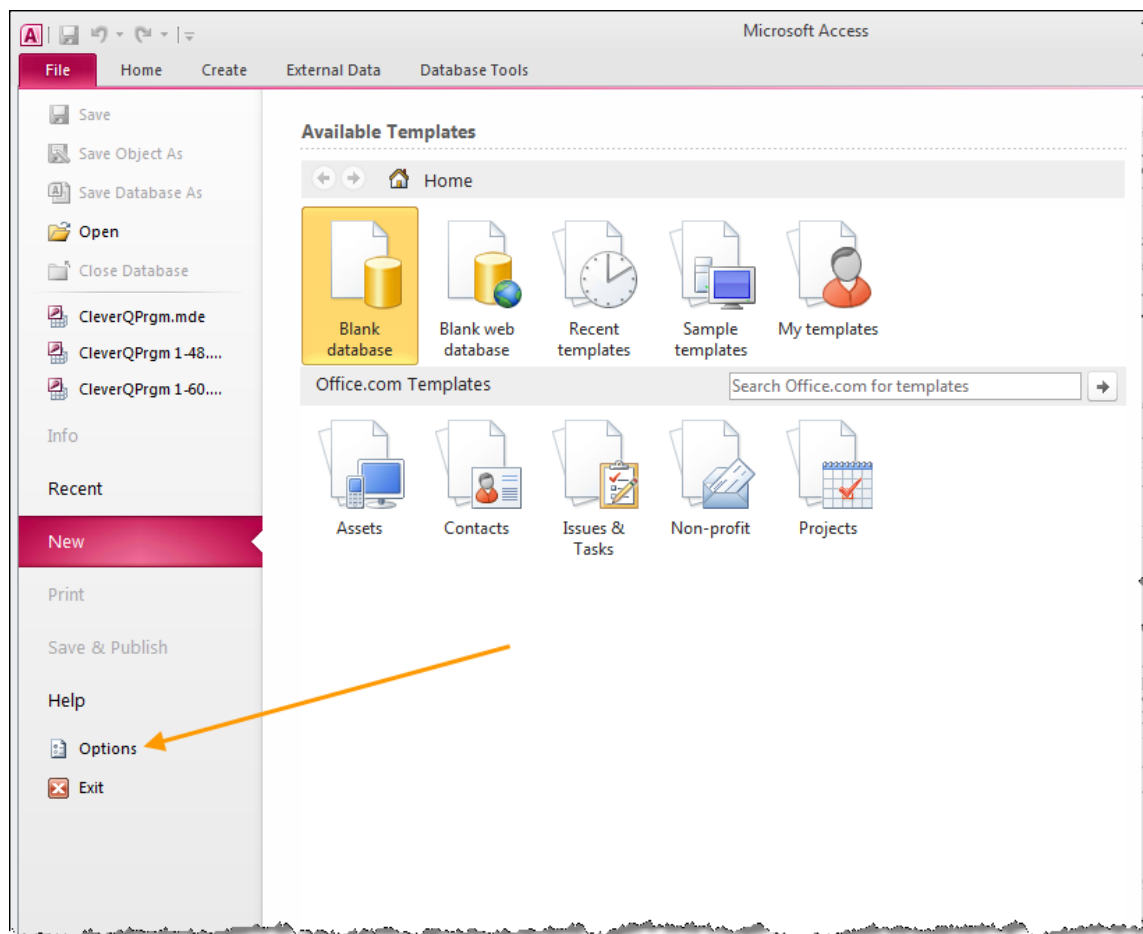


CleverQ® and Microsoft Access 2010

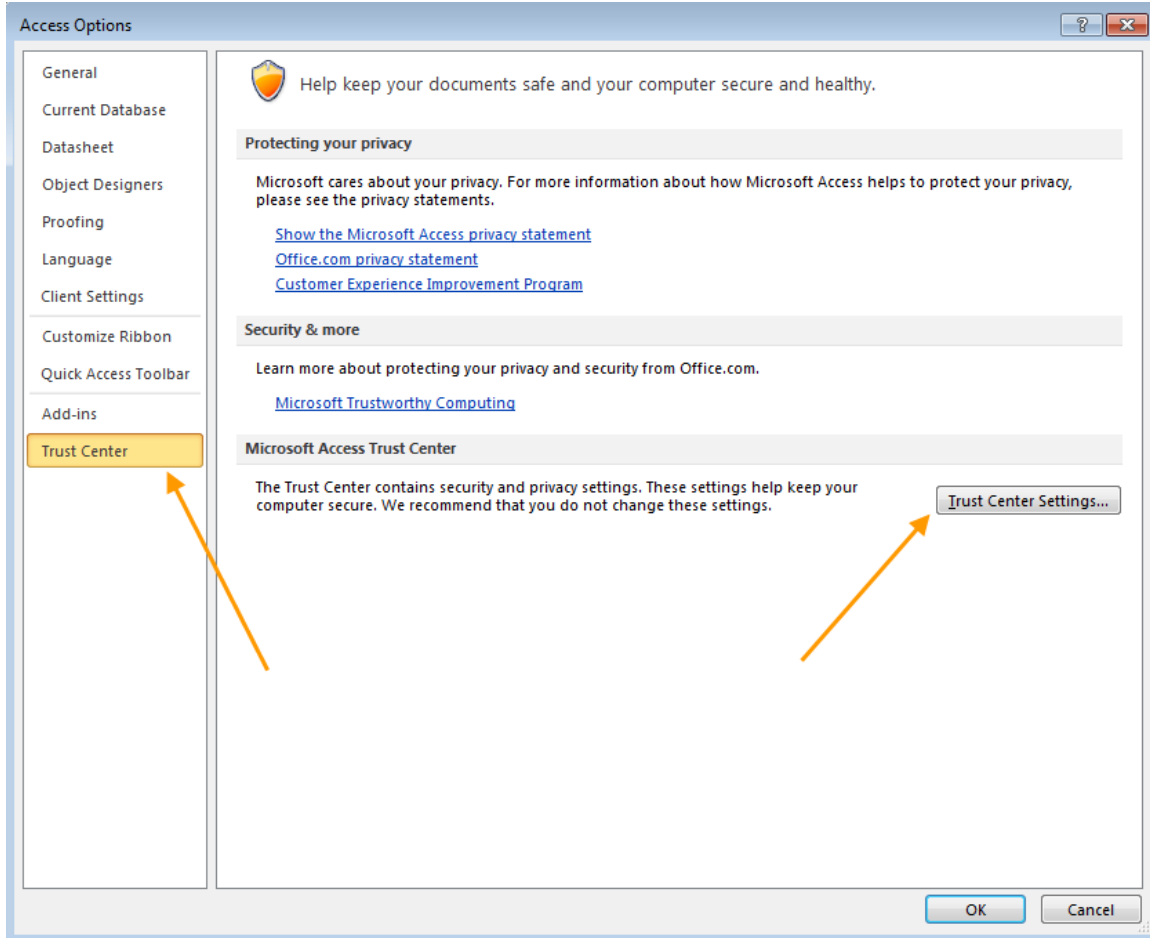
If you have Microsoft Office 2010 Professional installed on your computer, there are a few steps you need to perform prior to installing or starting CleverQ. Microsoft Office 2010 Professional includes Microsoft Access 2010 which will be used by CleverQ. If you do not have Microsoft Access 2010 on your computer, you can ignore these instructions. CleverQ will also work with Access 2002, 2003, and 2007. If you do not have one of these versions of Access installed on your computer, the installation of CleverQ will install a runtime version of Access 2002 for you.

To configure Microsoft Access 2010 to run with CleverQ, you must first start Microsoft Access 2010 separately by going to the Start button on Windows, choose All Programs, select Microsoft Office, and then choose Microsoft Office Access 2010. You will then get the following screen.

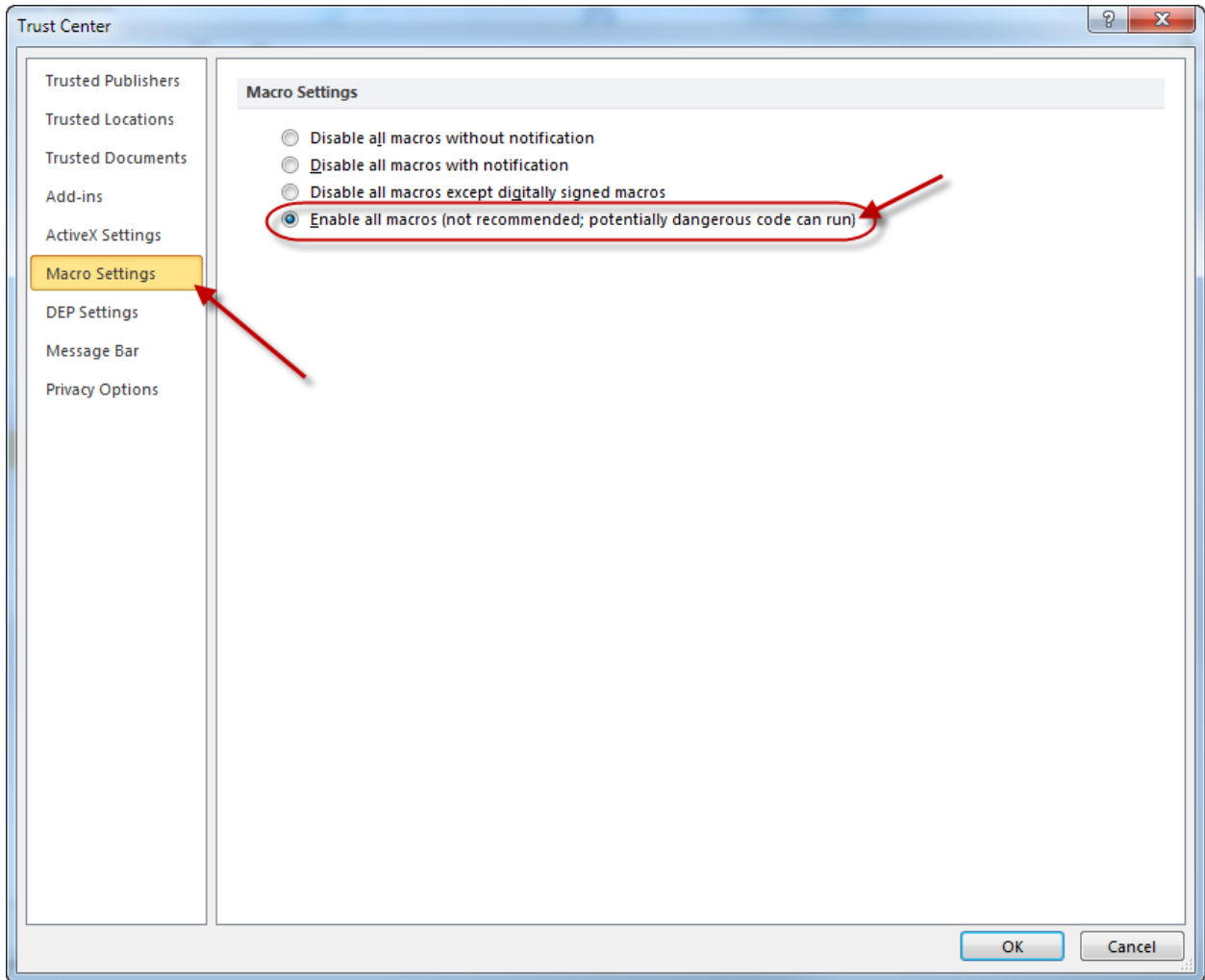


Microsoft Access 2010 Opening Screen

Press the Options selection just under Help. You will then get the following form displayed.



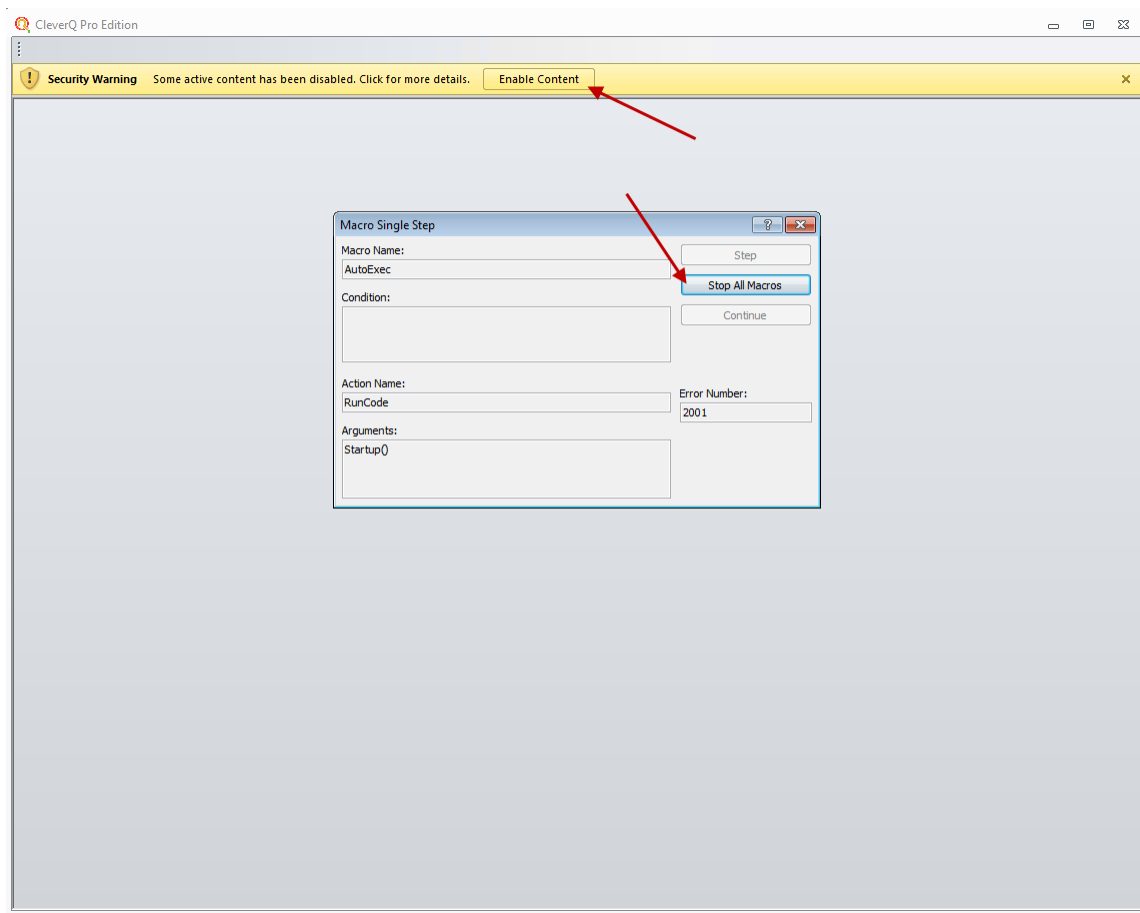
Press the “Trust Center” selection on the left of the form and then press the button “Trust Center Settings”. You will then get the Trust Center window as shown in the next figure.



On the Trust Center window, choose Macro Settings, and then select “Enable all macros (...)” Now press the OK button.

At this point you can close Access 2010 and start CleverQ either using the desktop shortcut, or the Start, All Programs button.

If you previously selected “Disable all macros except digitally signed macros”, then you might see the following screen when you first startup CleverQ.



Press “Stop All Macros” and the press “Enable Content”.