

Sadlier

# *Common Core Progress English Language Arts*

correlated to

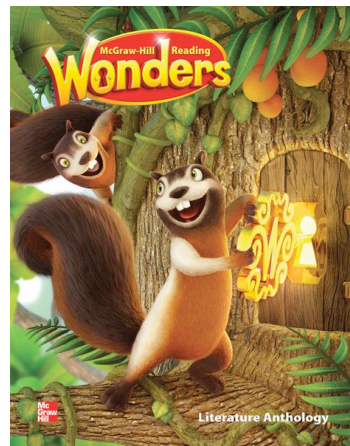
MacMillan/McGraw Reading

## *Wonders, Common Core* ©2014

and

# Common Core State Standards for ELA

## Grade 1



**Common Core State Standards for English Language Arts  
1<sup>st</sup> Grade**

<p align="center"><b>MacMillan/McGraw Hill Reading Wonders, Common Core ©2014 Teacher's Edition</b></p>	<p align="center"><b>Common Core Progress English Language Arts</b></p>	<p align="center"><b>Common Core State Standards for English Language Arts</b></p>
<p><b>Reading Standards for Literature First Grade</b></p>		
<p><b>Key Ideas and Details</b></p>		
<p><b>Unit 1:</b> S14, S32, T27, T70–T71, T113D, T130–T131, T148–T149, T150–T151, T183, T191B, T191C, T191D, T221, T223, T273, T415  <b>Unit 2:</b> T35D, T35F, T113D  <b>Unit 3:</b> T26, T27, T61, T191C, T407  <b>Unit 4:</b> T11, T17, T35H, T52, T62, T66, T191E, T269N, T407  <b>Unit 5:</b> T245, T251, T261, T286, T296, T300, T322, T333, T407  <b>Unit 6:</b> T35C, T191C</p>	<p><b>Unit :</b> 9-11,12-17, 31-34, 37-38</p>	<p><b>RL.1.1.</b> Ask and answer questions about key details in a text.</p>
<p><b>Unit 1:</b> S32, T31, T35H, T109, T113I  <b>Unit 2:</b> T31, T35I, T109, T113G, T113J, T145, T151  <b>Unit 3:</b> T31, T53, T109, T187, T223  <b>Unit 4:</b> T35K, T265, T269P, T307  <b>Unit 5:</b> T11, T89, T140, T141, T297, T414, T415  <b>Unit 6:</b> T27, T35D, T35I, T35K, T35L, T35N, T47, T65, T67, T187, T191L, T191Q, T261, T269B, T269C, T269F, T269H, T269L, T269M, T269O, T269Q, T301</p>	<p><b>Unit :</b> 9-11, 18-21, 31-34, 37-38</p>	<p><b>RL.1.2.</b> Retell stories, including key details, and demonstrate understanding of their central message or lesson.</p>

**Common Core State Standards for English Language Arts  
1<sup>st</sup> Grade**

<p align="center"><b>MacMillan/McGraw Hill Reading Wonders, Common Core ©2014 Teacher's Edition</b></p>	<p align="center"><b>Common Core Progress English Language Arts</b></p>	<p align="center"><b>Common Core State Standards for English Language Arts</b></p>
<p><b>Key Ideas and Details</b></p>		
<p><b>Unit 1:</b> T27, T35B, T35C, T35D, T35E, T35F, T35H, T52–T53, T62–T63, T67, T105, T113B, T113D, T113E, T113F, T113G, T113I, T130–T131, T140–T141, T145, T191B, T191C, T191D, T191G, T208–T209, T218–T219, T222–T223</p> <p><b>Unit 2:</b> T26–T27, T35B, T35C, T35D, T35E, T35F, T35G, T52–T53, T61, T62–T63, T65, T104–T105, T113B, T113D, T113E, T113F, T113H, T130–T131, T140–T141, T143, T260–T261, T269B, T269C, T269D, T269E, T269F, T269H</p> <p><b>Unit 3:</b> T26–T27, T35B, T35C, T35D, T35G, T35H, T35J, T104–T105, T113B, T113C, T113D, T113E, T113G, T113H, T113J, T182–T183, T191B, T191C, T191D, T191E, T191G, T191H</p> <p><b>Unit 4:</b> T26–T27, T35E, T35G, T35I, T35K, T35L, T52, T53, T60–T63, T65–T68, T70–T73, T281, T415</p> <p><b>Unit 5:</b> T31, T35C, T35D, T35F, T60, T65, T104, T105, T138, T139, T269C, T269F–T269H, T305–T307, T407, T415</p> <p><b>Unit 6:</b> T35D, T35F, T35I, T35K, T182, T183, T216, T217, T294, T306, T307, T415</p>	<p><b>Unit 1:</b> 9-11, 22-25, 31-34, 37-38</p>	<p><b>RL.1.3.</b> Describe characters, settings, and major events in a story, using key details.</p>
<p><b>Craft and Structure</b></p>		
<p><b>Unit 1:</b> T272–T273</p> <p><b>Unit 2:</b> T194–T195</p> <p><b>Unit 3:</b> T35E, T35F, T35I, T191D, T194, T194A, T195B</p> <p><b>Unit 4:</b> T194–T195</p> <p><b>Unit 5:</b> T35H, T195A, T195A, T195B</p> <p><b>Unit 6:</b> T116–T117, T269K</p>	<p><b>Unit 5:</b> 101-103, 104-105, 119-122, 125-126</p>	<p><b>RL.1.4.</b> Identify words and phrases in stories or poems that suggest feelings or appeal to the senses.</p>

**Common Core State Standards for English Language Arts  
1<sup>st</sup> Grade**

MacMillan/McGraw Hill Reading <i>Wonders</i> , Common Core ©2014 Teacher's Edition	Common Core Progress English Language Arts	Common Core State Standards for English Language Arts
<b>Craft and Structure, cont.</b>		
<b>Unit 1:</b> S14, S32, S62, S92, T113F <b>Unit 3:</b> T35E, T269D <b>Unit 4:</b> T35H, T113H, T191I, T269D, T347D <b>Unit 5:</b> T35C, T35J, T113K, T182, T191L, T269P, T338, T347F <b>Unit 6:</b> T26, T35J, T113L, T191R, T269R, T347F	<b>Unit 5:</b> 101-103,106-115, 119-122, 125-126	<b>RL.1.5.</b> Explain major differences between books that tell stories and books that give information, drawing on a wide reading of a range of text types.
<b>Unit 3:</b> T26, T35B, T35C, T113I <b>Unit 4:</b> T269R, T281 <b>Unit 5:</b> T35E, T394, T395	<b>Unit 5:</b> 101-103, 110-113, 119-122,125-126	<b>RL.1.6.</b> Identify who is telling the story at various points in a text.
<b>Integration of Knowledge and Ideas</b>		
<b>Unit 1:</b> T27, T35G, T70–T71, T72–T73, T104, T105, T113H, T113I, T191E, T191H, T216 <b>Unit 2:</b> T35C, T35D, T53, T138, T143 <b>Unit 3:</b> T65, T113D, T191I <b>Unit 4:</b> T35J, T71, T269G <b>Unit 5:</b> T71, T150, T269D, T269O, T305–T307, T323 <b>Unit 6:</b> T191E, T191I, T191P, T227, T269G, T269P	<b>Unit 9:</b> 189-191, 194–197,207-210, 213-214	<b>RL.1.7.</b> Use illustrations and details in a story to describe its characters, setting, or events.
<b>RL.1.8.</b> (Not applicable to literature)		
<b>Unit 1:</b> T124, T202 <b>Unit 2:</b> T124 <b>Unit 3:</b> T202 <b>Unit 4:</b> T46 <b>Unit 5:</b> T46, T124, T280 <b>Unit 6:</b> T46, T202	<b>Unit 1:</b> 35 <b>Unit 5:</b> 129 <b>Unit 9:</b> 189-191,198-201, 207-210, 211, 213-214	<b>RL.1.9.</b> Compare and contrast the adventures and experiences of characters in stories.

**Common Core State Standards for English Language Arts  
1<sup>st</sup> Grade**

<p align="center"><b>MacMillan/McGraw Hill Reading Wonders, Common Core ©2014 Teacher's Edition</b></p>	<p align="center"><b>Common Core Progress English Language Arts</b></p>	<p align="center"><b>Common Core State Standards for English Language Arts</b></p>
<p><b>Range and Level of Text Complexity</b></p>		
<p><b>Unit 1:</b> T16–T17, T26, T52–T53, T94–T95, T104–T105, T140–T141, T172–T173, T191A–T191I, T273, T412–T414</p> <p><b>Unit 2:</b> T16–T17, T35A–T35I, T94–T95, T113A–T113I, T195, T250–T251, T269A–T269I</p> <p><b>Unit 3:</b> T16–T17, T35A–T35I, T94–T95, T113A–T113J, T172–T173, T191A–T191J</p> <p><b>Unit 4:</b> T16–T17, T35A–T35L, T195, T250–T251, T269A–T269R</p> <p><b>Unit 5:</b> T16–T17, T35A–T35J, T94–T95, T113A–T113R, T195A–T195B, T250–T251, T269A–T269P</p> <p><b>Unit 6:</b> T16–T17, T35A–T35N, T117, T172–T173, T191A–T191R, T250–T251, T269A–T269R</p>	<p><b>Unit 1:</b> 12–17, 18–21, 22–25, 26, 27–28, 29–30, 31–34, 37–38</p> <p><b>Unit 5:</b> 100–101, 102–105, 106–115, 116, 117–118, 119–122, 125–126</p> <p><b>Unit 9:</b> 192–193, 194–197, 198–201, 202, 203–204, 205–206, 207–210, 213–214</p>	<p><b>RL.1.10.</b> With prompting and support, read prose and poetry of appropriate complexity for grade 1.</p>

**Common Core State Standards for English Language Arts  
1<sup>st</sup> Grade**

<p align="center"><b>MacMillan/McGraw Hill Reading Wonders, Common Core ©2014 Teacher's Edition</b></p>	<p align="center"><b>Common Core Progress English Language Arts</b></p>	<p align="center"><b>Common Core State Standards for English Language Arts</b></p>
<p><b>Reading Standards for Informational Texts</b></p>		
<p><b>Key Ideas and Details</b></p>		
<p><b>Unit 1:</b> T244, T245, T261, T265, T269B, T269C, T269E, T286–T287, T296–T297, T299, T300–T301, T322, T323, T338–T339, T347B, T347C, T347D, T351, T364–T365, T374–T375, T378–T379, T404, T412, T413</p> <p><b>Unit 2:</b> T191C</p> <p><b>Unit 3:</b> T260, T261, T269C, T294, T358, T372, T389, T394, T395, T407, T412, T413, T415</p> <p><b>Unit 4:</b> T89, T130, T140, T144, T148, T149, T167, T208, T216, T218, T222, T227–T229, T328, T394, T395, T407, T412, T413, T415</p> <p><b>Unit 5:</b> T167, T191D, T208, T218, T222, T280, T338, T339, T364, T374, T379, T382, T383, T394, T395, T407, T412, T413, T415</p> <p><b>Unit 6:</b> T113F–T113J, T124, T372, T394, T395, T407, T412, T413, T415</p>	<p><b>Unit 3:</b> 53-55, 58-61, 75-78, 81-82</p>	<p><b>RI.1.1.</b> Ask and answer questions about key details in a text.</p>
<p><b>Unit 1:</b> S56, T265, T269D, T269I, T343, T415</p> <p><b>Unit 2:</b> T182–T183, T191B, T191D, T191E, T191F, T208–T209, T218–T219, T221, T338–T339, T347B, T347C, T347D</p> <p><b>Unit 3:</b> T269D, T269I, T269J, T307, T347C, T347D, T338, T339, T375</p> <p><b>Unit 4:</b> T89, T151, T245, T347B, T347C, T347E, T347F, T379</p> <p><b>Unit 5:</b> T167, T191H, T191K, T191L, T223, T385, T414, T415</p> <p><b>Unit 6:</b> T109, T131, T245, T347F, T359</p>	<p><b>Unit 3:</b> 53-55, 62-65, 75-78, 81-82</p>	<p><b>RI.1.2.</b> Identify the main topic and retell key details of a text.</p>

**Common Core State Standards for English Language Arts  
1<sup>st</sup> Grade**

<p align="center"><b>MacMillan/McGraw Hill Reading Wonders, Common Core ©2014 Teacher's Edition</b></p>	<p align="center"><b>Common Core Progress English Language Arts</b></p>	<p align="center"><b>Common Core State Standards for English Language Arts</b></p>
<p><b>Key Ideas and Details, cont.</b></p>		
<p><b>Unit 1:</b> T269H, T404, T405, T406  <b>Unit 3:</b> T260–T261, T269B, T269C, T269E, T269F, T269G, 286, T287, T295–T297, T299–T301, T303–T307, T338–T339, T347B, T347C, T365, T373, T375, T377, T379, T381, T385, T404, T405  <b>Unit 4:</b> T113D, T113F, T113H, T404–T406  <b>Unit 5:</b> T183, T187, T191B, T191E, T191H, T191I, T208, T209, T216–T219, T223, T225–T229, T339, T347C, T347E, T347F, T339, T364, T365, T373, T375, T377, T379, T384, T385  <b>Unit 6:</b> T113D, T113E, T404–T406</p>	<p><b>Unit 3:</b> 53-55, 66-69, 75-78, 81-82</p>	<p><b>RI.1.3.</b> Describe the connection between two individuals, events, ideas, or pieces of information in a text.</p>
<p><b>Craft and Structure</b></p>		
<p><b>Unit 3:</b> T269F  <b>Unit 4:</b> T113F, T191B, T191E, T191G  <b>Unit 5:</b> T347D  <b>Unit 6:</b> T113G, T347D</p>	<p><b>Unit 7:</b> 145-147, 150-153, 167-170, 173-174</p>	<p><b>RI.1.4.</b> Ask and answer questions to help determine or clarify the meaning of words and phrases in a text.</p>
<p><b>Unit 1:</b> T38, T39, T39A, T39B, T117, T118, T119, T195, T195A, T195B, T347C, T350–T351, T396  <b>Unit 2:</b> T39, T39A, T39B, T117, T117B, T273, T273B, T350, T351  <b>Unit 3:</b> T39, T39B, T117, T117B, T273, T273A, T273B, T350, T351, T396, T415  <b>Unit 4:</b> T38, T39A, T39B, T117, T117A, T117B, T273, T273B, T280, T350, T351, T396, T415  <b>Unit 5:</b> T396, T415  <b>Unit 6:</b> T39, T39A, T39B, T195, T195A, T195B, T350, T396, T415</p>	<p><b>Unit 7:</b> 145-147, 154-157, 167-170, 173-174</p>	<p><b>RI.1.5.</b> Know and use various text features (e.g., headings, tables of contents, glossaries, electronic menus, icons) to locate key facts or information in a text.</p>

**Common Core State Standards for English Language Arts  
1<sup>st</sup> Grade**

<p align="center"><b>MacMillan/McGraw Hill Reading Wonders, Common Core ©2014 Teacher's Edition</b></p>	<p align="center"><b>Common Core Progress English Language Arts</b></p>	<p align="center"><b>Common Core State Standards for English Language Arts</b></p>
<p><b>Craft and Structure, cont.</b></p>		
<p><b>Unit 1:</b> T269C, T269E, T269F, T347B, T347C  <b>Unit 2:</b> T191C  <b>Unit 3:</b> T269D  <b>Unit 4:</b> T35J, T182  <b>Unit 5:</b> T182, T273  <b>Unit 6:</b> T113E, T113F, T113H, T338</p>	<p><b>Unit 7:</b> 145-147, 158-161, 167-170, 173-174</p>	<p><b>RI.1.6.</b> Distinguish between information provided by pictures or other illustrations and information provided by the words in a text.</p>
<p><b>Integration of Knowledge and Ideas</b></p>		
<p><b>Unit 1:</b> T38–T39, T39A, T39B, T269E, T296, T299, T300, T303, T338, T347D, T372, T373  <b>Unit 2:</b> T39, T117, T191C, T347D  <b>Unit 3:</b> T39, T117, T117B, T269D, T269I, T269J, T273, T273B, T287, T307, T350, T351, T365, T372, T383–T385  <b>Unit 4:</b> T38, T149, T150, T167, T191G, T191I, T191O, T229, T245, T339, T365, T374, T375, T384, T385  <b>Unit 5:</b> T38, T39, T39A, T39B, T191B, T191D, T228, T347F, T372  <b>Unit 6:</b> T31, T38, T39A, T113E–T113H, T113I, T113K, T113L, T148–151, T273, T273A, T338, T339, T347B–T347D, T365, T383</p>	<p><b>Unit 11:</b> 229-231, 234-237, 251-254, 257-258</p>	<p><b>RI.1.7.</b> Use the illustrations and details in a text to describe its key ideas.</p>
<p><b>Unit 1:</b> T260–T261, T281  <b>Unit 2:</b> T183, T191D, T191F, T203  <b>Unit 3:</b> T261, T347D  <b>Unit 4:</b> T125  <b>Unit 5:</b> T203, T359  <b>Unit 6:</b> T125, T347C, T359</p>	<p><b>Unit 11:</b> 229-231, 238-241, 251-254, 257-258</p>	<p><b>RI.1.8.</b> Identify the reasons an author gives to support points in a text.</p>



**Common Core State Standards for English Language Arts  
1<sup>st</sup> Grade**

<p align="center"><b>MacMillan/McGraw Hill Reading Wonders, Common Core ©2014 Teacher's Edition</b></p>	<p align="center"><b>Common Core Progress English Language Arts</b></p>	<p align="center"><b>Common Core State Standards for English Language Arts</b></p>
<p><b>Integration of Knowledge and Ideas, cont.</b></p>		
<p><b>Unit 1:</b> T46, T124, T351, T358, T379, T385  <b>Unit 2:</b> T202, T280, T358  <b>Unit 3:</b> T280, T287, T297, T307, T358, T379  <b>Unit 4:</b> T124, T131, T141, T145, T151, T202, T209, T219, T280, T365, T375, T379, T385  <b>Unit 5:</b> T202, T365, T375, T385  <b>Unit 6:</b> T358, T365, T375, T379, T385</p>	<p><b>Unit 11:</b> 229-231, 242-245, 251-254, 257-258</p>	<p><b>RI.1.9.</b> Identify basic similarities in and differences between two texts on the same topic (e.g., in illustrations, descriptions, or procedures).</p>
<p><b>Range of Reading and Level of Text Complexity</b></p>		
<p><b>Unit 1:</b> T195A–T195B, T250–T251, T269A–T269I, T328–T329, T347A–T347D, T351, T374–T375, T404–T407  <b>Unit 2:</b> T39A–T39B, T117A–T117B, T172–T173, T191A–T191G, T273A–T273B, T328–T329, T347A–T347D, T351  <b>Unit 3:</b> T250–T251, T269A–T269J, T273A–T273B, T328–T329, T347A–T347F  <b>Unit 4:</b> T39A–T39B, T94–T95, T113A–T113L, T117A–T117B, T172–T173, T191A–T191P, T273A–T273B, T328–T329, T347A–T347F, T351  <b>Unit 5:</b> T39A–T39B, T117A–T117B, T172–T173, T191A–T191L, T273A–T273B, T328–T329, T347A–T347F, T351  <b>Unit 6:</b> T39A–T39B, T94–T95, T113A–T113L, T195A–T195B, T273A–T273B, T328–T329, T347A–T347F, T351</p>	<p><b>Unit 3:</b> 56-57, 58-61, 62-65, 66-69, 70, 71-72, 73-74, 75-78, 82-83  <b>Unit 7:</b> 148-149, 150-153, 154-157, 158-161, 162, 163-164, 165-166, 167-170, 173-174  <b>Unit 11:</b> 232-233, 234-237, 238-241, 242-245, 246, 247-248, 249-250, 251-254, 257-258</p>	<p><b>RI.1.10.</b> With prompting and support, read informational texts appropriately complex for grade 1.</p>

**Common Core State Standards for English Language Arts  
1<sup>st</sup> Grade**

MacMillan/McGraw Hill Reading <i>Wonders</i> , Common Core ©2014 Teacher's Edition	Common Core Progress English Language Arts	Common Core State Standards for English Language Arts
<b>Reading Standards for Foundational Skills</b>		
<b>Print Concepts</b>		
		<b>RF.1.1.</b> Demonstrate understanding of the organization and basic features of print.
<b>Unit 1:</b> S22, S28, S34, S40, S46, S52, S58, S64, S70, S76, S82, S88, T28, T29, T185, T206, T349 <b>Unit 2:</b> T10, T88, T166, T324, T333, T351, T365 <b>Unit 3:</b> T12, T13, T54 <b>Unit 4:</b> T54, T115 <b>Unit 5:</b> T97, T107, T115, T129	<b>Unit 10:</b> 224, 268	<b>RF.1.1.a.</b> Recognize the distinguishing features of a sentence (e.g., first word, capitalization, ending punctuation).
<b>Phonological Awareness</b>		
		<b>RF.1.2.</b> Demonstrate understanding of spoken words, syllables, and sounds (phonemes).
<b>Unit 3:</b> T12, T13, T54 <b>Unit 4:</b> T54	<b>Unit 1:</b> 10, 26, 27-28, 29-30 <b>Unit 7:</b> 146, 162, 165-166, 173-174 <b>Unit 9:</b> 190, 202, 203-204, 205-206, 213-214	<b>RF.1.2.a.</b> Distinguish long from short vowel sounds in spoken single-syllable words.
<b>Unit 1:</b> S53, S65, S71, T32, T55, T110, T126, T132, T178, T210, T282, T289, T367 <b>Unit 2:</b> T12, T48, T54, T55, T110, T126, T133, T176, T212, T291, T362, T368 <b>Unit 3:</b> T126, T188, T211, T282, T289, T334, T366 <b>Unit 4:</b> T32, T55, T132, T178, T179, T204, T210, T344, T345, T366 <b>Unit 5:</b> T32, T55, T110, T126, T132, T176, T177, T188, T189, T266, T282, T288, T324, T325, T352, T366, T367 <b>Unit 6:</b> T110, T111, T132, T133, T266, T282, T288, T334, T366	<b>Unit 1:</b> 10, 26, 27-28, 29-30	<b>RF.1.2.b.</b> Orally produce single-syllable words by blending sounds (phonemes), including consonant blends.

**Common Core State Standards for English Language Arts  
1<sup>st</sup> Grade**

<p align="center"><b>MacMillan/McGraw Hill Reading Wonders, Common Core ©2014 Teacher's Edition</b></p>	<p align="center"><b>Common Core Progress English Language Arts</b></p>	<p align="center"><b>Common Core State Standards for English Language Arts</b></p>
<p><b>Phonological Awareness, cont.</b></p>		
<p><b>Unit 1:</b> S5, S11, S41, T22, T40, T54, T90, T100, T118, T132, T133, T168, T188, T196, T210, T211, T246, T288, T324, T366, T367</p> <p><b>Unit 2:</b> T22, T40, T54, T55, T100, T118, T132, T168, T188, T198, T212, T213, T248, T258, T276, T290, T291, T369</p> <p><b>Unit 3:</b> T32, T40, T55, T132, T133, T210, T256, T274, T288, T367</p> <p><b>Unit 4:</b> T22, T23, T54, T90, T110, T118, T132, T133, T168, T188, T196, T210, T211, T246, T288, T289, T324, T352, T366, T367</p> <p><b>Unit 5:</b> T12, T22, T40, T54, T132, T133, T168, T210, T211, T256, T274, T288, T289, T334, T366</p> <p><b>Unit 6:</b> T12, T54, T90, T118, T132, T133, T168, T196, T210, T211, T289, T366, T367</p>	<p><b>Unit 5:</b> 114</p>	<p><b>RF.1.2.c.</b> Isolate and pronounce initial, medial vowel, and final sounds (phonemes) in spoken single-syllable words.</p>
<p><b>Unit 1:</b> S77, S83, T48, T55, T126, T133, T204, T211, T256, T282, T289, T334, T360, T366</p> <p><b>Unit 2:</b> T48, T126, T206, T213, T284, T326, T362, T368, T369</p> <p><b>Unit 3:</b> T54, T110, T119, T132, T246, T288, T289, T366, T367</p> <p><b>Unit 4:</b> T48, T55, T100, T126, T133, T289</p> <p><b>Unit 5:</b> T55, T204, T210, T266, T334, T360, T367</p> <p><b>Unit 6:</b> T22, T48, T55, T126, T178, T204, T210, T256, T274, T288, T367</p>	<p><b>Unit 5:</b> 114</p>	<p><b>RF.1.2.d.</b> Segment spoken single-syllable words into their complete sequence of individual sounds (phonemes).</p>

**Common Core State Standards for English Language Arts  
1<sup>st</sup> Grade**

<p align="center"><b>MacMillan/McGraw Hill Reading Wonders, Common Core ©2014 Teacher's Edition</b></p>	<p align="center"><b>Common Core Progress English Language Arts</b></p>	<p align="center"><b>Common Core State Standards for English Language Arts</b></p>
<p><b>Phonics and Word Recognition</b></p>		
		<p><b>RF.1.3.</b> Know and apply grade-level phonics and word analysis skills in decoding words</p>
<p><b>Unit 2:</b> T251, T256, T258, T266, T268, T274, T275, T283, T290, T291, T298, T310, T324, T334, T336, T344, T346, T352, T353, T360, T361 <b>Unit 6:</b> T212, T220, T246</p>	<p><b>Unit 3:</b> 54, 70, 71-72</p>	<p><b>RF.1.3.a.</b> Know the spelling-sound correspondences for common consonant digraphs.</p>
<p><b>Unit 1:</b> S6, S12, S18, S24, S31, S37, S43, S49, S54, S61, S67, S73, S79, S85, S91, T13, T17, T23, T32, T33, T48, T56, T64, T91, T95, T101, T110, T111, T134, T135, T142, T169, T173, T179, T188, T196, T204, T212, T213, T220, T247, T251, T257, T266, T267, T274, T290, T291, T298, T325, T329, T335, T344, T352, T368, T369, T376 <b>Unit 2:</b> T32, T33, T118, T119, T188, T189, T214, T215, T252, T253, T336, T337 <b>Unit 3:</b> T16, T17, T56, T57, T168, T169, T266, T267, T324, T325 <b>Unit 4:</b> T17, T22, T23, T32, T33, T64, T95, T101, T134, T135, T173, T188, T189, T212, T213, T250, T251, T290, T291, T324, T325, T328, T329, T346 <b>Unit 5:</b> T12, T13, T126, T127, T212, T213, T324, T325, T344, T345, T368, T369 <b>Unit 6:</b> T16, T17, T22, T23, T32, T33, T40, T48, T56, T57, T64, T90, T91, T94, T95, T100, T101, T134, T135, T142, T168, T169, T172, T173, T188, T189, T196, T197, T204, T205, T212, T213, T246, T247, T250, T251, T256, T257, T266, T267, T274, T275, T290, T291, T298, T324, T325, T328, T329, T334, T335, T344, T345, T352, T353, T368, T369, T376</p>	<p><b>Unit 5:</b> 102, 114, 115-116, 125-126</p>	<p><b>RF.1.3.b.</b> Decode regularly spelled one-syllable words</p>

**Common Core State Standards for English Language Arts  
1<sup>st</sup> Grade**

<p align="center"><b>MacMillan/McGraw Hill Reading Wonders, Common Core ©2014 Teacher's Edition</b></p>	<p align="center"><b>Common Core Progress English Language Arts</b></p>	<p align="center"><b>Common Core State Standards for English Language Arts</b></p>
<p><b>Phonological Awareness, cont.</b></p>		
<p><b>Unit 3:</b> T12, T13, T17, T22, T23, T32, T33, T34, T40, T48, T56, T57, T64, T90, T91, T100, T101, T110–T113, T118, T126, T134, T135, T142, T210, T246, T247, T256, T257, T290, T291</p> <p><b>Unit 4:</b> T12, T13, T24, T32, T33, T40, T48, T56, T57, T64, T76, T90, T91, T101, T110, T111, T118, T119, T126, T127, T134, T142, T168, T169, T213, T220, T246, T247, T256, T257, T266, T267, T282, T290, T291, T334, T335, T352, T353, T360, T361, T368, T369, T376, T388</p>	<p><b>Unit 5:</b> 102, 117-118, 125-126</p> <p><b>Unit 9:</b> 190, 202, 203-204, 205-206, 213-214</p>	<p><b>RF.1.3.c.</b> Know final -e and common vowel team conventions for representing long vowel sounds.</p>
<p><b>Unit 2:</b> T179, T257</p> <p><b>Unit 3:</b> T267, T275</p> <p><b>Unit 4:</b> T214</p> <p><b>Unit 5:</b> T370</p> <p><b>Unit 6:</b> T101, T370</p>	<p><b>Unit 11:</b> 230, 246, 247-248</p>	<p><b>RF.1.3.d.</b> Use knowledge that every syllable must have a vowel sound to determine the number of syllables in a printed word.</p>
<p><b>Unit 2:</b> T257, T275, T283</p> <p><b>Unit 3:</b> T257, T267, T275, T283, T292</p> <p><b>Unit 4:</b> T179, T189, T196, T204, T214</p> <p><b>Unit 5:</b> T335, T345, T352, T360</p> <p><b>Unit 6:</b> T101, T111, T118, T126, T136, T179, T335, T345, T360</p>	<p><b>Unit 11:</b> 230, 246, 247-248</p>	<p><b>RF.1.3.e.</b> Decode two-syllable words following basic patterns by breaking the words into syllables.</p>
<p><b>Unit 1:</b> T23, T33, T41, T58, T179, T189, T197, T205</p> <p><b>Unit 2:</b> T23, T33, T41, T49, T58, T179, T189</p> <p><b>Unit 3:</b> T101, T111, T119, T127, T136, T179, T189, T197, T205, T214, T335, T345, T352, T360, T370</p> <p><b>Unit 4:</b> T197, T257, T267, T274, T282, T292, T353</p> <p><b>Unit 5:</b> T101, T111, T113C, T118, T126, T136, T257, T267, T274, T282, T392</p> <p><b>Unit 6:</b> T40, T257, T267, T274, T282, T292</p>	<p><b>Unit 11:</b> 230, 246, 249-250</p>	<p><b>RF.1.3.f.</b> Read words with inflectional endings.</p>

**Common Core State Standards for English Language Arts  
1<sup>st</sup> Grade**

<p align="center"><b>MacMillan/McGraw Hill Reading Wonders, Common Core ©2014 Teacher's Edition</b></p>	<p align="center"><b>Common Core Progress English Language Arts</b></p>	<p align="center"><b>Common Core State Standards for English Language Arts</b></p>
<p><b>Phonological Awareness, cont.</b></p>		
<p><b>Unit 1:</b> S7, S19, S25, S30, S37, S49, S60, S67, S73, S79, S85, S91, T15, T17, T25, T35, T59, T64, T75, T93, T95, T137, T142, T153, T171, T173, T181, T190, T191, T215, T220, T231, T249, T251, T259, T268, T269, T275, T293, T298, T309, T327, T329, T337, T346, T353, T361, T371, T376, T387</p> <p><b>Unit 2:</b> T14–T17, T92–T95, T170–T173, T250–T253, T338, T339</p> <p><b>Unit 3:</b> T59, T137, T205, T311, T386</p> <p><b>Unit 4:</b> T49, T112, T113, T180, T181, T258, T259, T326, T327</p> <p><b>Unit 5:</b> T14–T17, T92–T95, T170–T173, T248–T251, T346–T347</p> <p><b>Unit 6:</b> T25, T103, T220, T298, T371</p>	<p><b>Unit 5:</b> 115</p> <p><b>Unit 9:</b> 202, 203, 205</p> <p><b>Unit 11:</b> 246, 247</p>	<p><b>RF.1.3.g.</b> Recognize and read grade-appropriate irregularly spelled words.</p>
<p><b>Fluency</b></p>		
<p><b>Unit 1:</b> T16–T17, T394–T395</p> <p><b>Unit 2:</b> T94–T95, T182–T183, T394–T395</p> <p><b>Unit 3:</b> T94–T95, T280–T281, T394–T395</p> <p><b>Unit 4:</b> T104–T105, T172–T173, T394–T395</p> <p><b>Unit 5:</b> T16–T17, T260–T261, T394–T395</p> <p><b>Unit 6:</b> T94–T95, T182–T183, T394–T395</p>	<p><b>Unit 3:</b> 71-72, 73-74</p>	<p><b>RF.1.4.</b> Read with sufficient accuracy and fluency to support comprehension.</p> <p><b>RF.1.4.a.</b> Read on-level text with purpose and understanding.</p>

**Common Core State Standards for English Language Arts  
1<sup>st</sup> Grade**

<p align="center"><b>MacMillan/McGraw Hill Reading Wonders, Common Core ©2014 Teacher's Edition</b></p>	<p align="center"><b>Common Core Progress English Language Arts</b></p>	<p align="center"><b>Common Core State Standards for English Language Arts</b></p>
<p><b>Fluency, cont.</b></p>		
<p><b>Unit 1:</b> T31, T60, T109, T138, T187, T265, T294, T372, T394–T395  <b>Unit 2:</b> T31, T53, T60, T63, T109, T131, T141, T187, T209, T219, T265, T287, T297, T343, T365, T394–T395  <b>Unit 3:</b> T31, T53, T109, T131, T141, T187, T209, T219, T265, T287, T297, T343, T365, T394–T395  <b>Unit 4:</b> T53, T63, T109, T131, T141, T187, T209, T219, T287, T297, T365, T394–T395  <b>Unit 5:</b> T53, T63, T131, T141, T209, T219, T287, T297, T365, T394–T395  <b>Unit 6:</b> T53, T63, T131, T141, T209, T219, T287, T297, T365, T394–T395</p>	<p><b>Unit 1:</b> 27-28, 29-30  <b>Unit 5:</b> 115-116, 117-118  <b>Unit 9:</b> 203-204, 205-206  <b>Unit 11:</b> 247-248, 249-250</p>	<p><b>RF.1.4.b.</b> Read on-level text orally with accuracy, appropriate rate, and expression on successive readings.</p>
<p><b>Unit 1:</b> T39, T113C, T394  <b>Unit 2:</b> T113C, T166–T167, T191B, T191D, T191E, T195, T244–T245, T269B, T269D, T269F, T269G, T273A, T322–T323, T347B, T347C, T351, T394, T395  <b>Unit 3:</b> T35C, T113C, T113F, T191C, T269B, T269C, T269E, T269F, T347B, T347D, T394, T395  <b>Unit 4:</b> T191J, T269H, T394, T395  <b>Unit 5:</b> T394, T395  <b>Unit 6:</b> T394, T395, T407</p>	<p><b>Unit 4:</b> 93  <b>Unit 7:</b> 174</p>	<p><b>RF.1.4.c.</b> Use context to confirm or self-correct word recognition and understanding, rereading as necessary.</p>

**Common Core State Standards for English Language Arts  
1<sup>st</sup> Grade**

<p align="center"><b>MacMillan/McGraw Hill Reading Wonders, Common Core ©2014 Teacher's Edition</b></p>	<p align="center"><b>Common Core Progress English Language Arts</b></p>	<p align="center"><b>Common Core State Standards for English Language Arts</b></p>
<p><b>Writing Standards</b></p>		
<p><b>Text Types and Purposes</b></p>		
<p><b>Unit 1:</b> S9, S15, S21, S33, S51, S63  <b>Unit 2:</b> T69, T397  <b>Unit 3:</b> T96, T106, T114, T115, T120, T121, T128, T252, T262, T270, T271, T276, T277, T284, T310, T330, T340, T348, T349, T354, T355, T362, T388  <b>Unit 4:</b> T69, T252, T262, T270, T271, T276, T277, T284, T303  <b>Unit 5:</b> T252, T262, T270, T271, T276, T277, T284, T379, T381  <b>Unit 6:</b> T303, T381</p>	<p><b>Unit 8:</b> 175-177, 178-183, 186</p>	<p><b>W.1.1.</b> Write opinion pieces in which they introduce the topic or name the book they are writing about, state an opinion, supply a reason for the opinion, and provide some sense of closure.</p>
<p><b>Unit 1:</b> S27, S39, S57, S81, S87, S93  <b>Unit 2:</b> T174, T184, T192, T208, T293, T350, T351, T356, T357, T364  <b>Unit 3:</b> T378, T379, T379  <b>Unit 4:</b> T96, T106, T114, T115, T120, T121, T128, T174, T184, T192, T193, T198, T199, T232, T310  <b>Unit 5:</b> T18, T28, T36, T37, T42, T43, T50, T301, T310, T397  <b>Unit 6:</b> T67, T122, T123, T330, T340, T348, T349, T354, T355, T362</p>	<p><b>Unit 4:</b> 83-85, 86-91,94  <b>Unit 10:</b> 215-216, 218-223, 226</p>	<p><b>W.1.2.</b> Write informative/explanatory texts in which they name a topic, supply some facts about the topic, and provide some sense of closure.</p>



**Common Core State Standards for English Language Arts  
1<sup>st</sup> Grade**

<p align="center"><b>MacMillan/McGraw Hill Reading Wonders, Common Core ©2014 Teacher's Edition</b></p>	<p align="center"><b>Common Core Progress English Language Arts</b></p>	<p align="center"><b>Common Core State Standards for English Language Arts</b></p>
<p><b>Text Types and Purposes</b></p>		
<p><b>Unit 1:</b> T18, T28, T252, T262, T270–T271, T276, T284, T330, T340, T348–T349, T354–T355, T362, T388</p> <p><b>Unit 2:</b> T18, T28, T36, T37, T50, T96, T106, T114, T115, T120, T121, T128, T154, T254, T264, T272, T273, T286, T312</p> <p><b>Unit 4:</b> T28, T118, T330, T340, T348, T349, T354, T355, T381</p> <p><b>Unit 5:</b> T174, T184, T192, T193, T198, T199, T206, T232, T330, T340, T348, T349, T354, T355, T362, T388</p> <p><b>Unit 6:</b> T18, T28, T36, T37, T42, T43, T50</p>	<p><b>Unit 2:</b> 39-41, 42-47, 50</p> <p><b>Unit 6:</b> 127-129, 130-135, 138</p>	<p><b>W.1.3.</b> Write narratives in which they recount two or more appropriately sequenced events, include some details regarding what happened, use temporal words to signal event order, and provide some sense of closure.</p>
<p><b>Production and Distribution of Writing</b></p>		
<p><b>Unit 1:</b> T18, T28, T36, T37, T42, T76, T96, T106, T114, T115, T120, T192, T193, T198, T270, T271, T348, T349, T354, T355</p> <p><b>Unit 2:</b> T36, T37, T114, T115, T192, T193, T200, T201, T272, T273, T356, T357</p> <p><b>Unit 3:</b> T18, T28, T36, T37, T42, T43, T76, T96, T106, T114, T115, T120, T121, T154, T174, T184, T192, T193, T198, T199, T252, T262, T270, T271, T276, T277, T310, T330, T340, T348, T349, T354, T355, T388</p>	<p><b>Writing Handbook:</b></p> <p><b>Step 1:</b> Planning—p. 264</p> <p><b>Step 2:</b> Drafting—p. 265</p> <p><b>Step 3:</b> Revising—p. 266</p> <p><b>Step 4:</b> Editing—pp. 267–268</p> <p><b>Step 5:</b> Producing, Publishing, and Presenting—p. 268</p> <p><b>Speaking and Listening:</b> Share Your Writing—pp. 50, 94, 138, 186, 226</p>	<p><b>W.1.4.</b> Begins in grade 3</p> <p><b>W.1.5.</b> With guidance and support from adults, focus on a topic, respond to questions and suggestions from peers, and add details to strengthen writing as needed.</p>

**Common Core State Standards for English Language Arts  
1<sup>st</sup> Grade**

<p align="center"><b>MacMillan/McGraw Hill Reading Wonders, Common Core ©2014 Teacher's Edition</b></p>	<p align="center"><b>Common Core Progress English Language Arts</b></p>	<p align="center"><b>Common Core State Standards for English Language Arts</b></p>
<p><b>Production and Distribution of Writing, cont.</b></p>		
<p><b>Unit 4:</b> T18, T28, T36, T37, T42, T96, T106, T114, T115, T120, T121, T154, T174, T184, T192, T193, T198, T199, T252, T262, T270, T271, T276, T277, T330, T340, T348, T349, T354, T355</p> <p><b>Unit 5:</b> T18, T28, T36, T37, T42, T43, T96, T106, T114, T115, T120, T121, T128, T174, T184, T192, T193, T198, T199, T252, T262, T270, T271, T276, T277, T330, T340, T348, T349, T354, T355</p> <p><b>Unit 6:</b> T18, T28, T36, T37, T42, T43, T51, T74, T96, T106, T114, T115, T120, T121, T128, T154, T174, T184, T192, T193, T198, T199, T206, T232, T252, T262, T270, T271, T276, T277, T284, T310, T330, T340, T348, T349, T354, T355, T362</p>	<p>See above.</p>	<p>See above.</p>
<p><b>Unit 1:</b> T128, T206, T362, T396–T402</p> <p><b>Unit 2:</b> T50, T128, T206, T284, T362, T396–T402</p> <p><b>Unit 3:</b> T50, T128, T206, T284, T362, T396–T402</p> <p><b>Unit 4:</b> T50, T128, T206, T284, T362, T396–T402</p> <p><b>Unit 5:</b> T50, T128, T206, T284, T362, T396–T402</p> <p><b>Unit 6:</b> T50, T128, T206, T284, T362, T396–T402</p>	<p><b>Writing Handbook</b></p> <p><b>Step 1:</b> Planning: Research Tip (use the Internet)—p. 264</p> <p><b>Step 2:</b> Drafting (use a computer)—p. 265</p> <p><b>Step 5:</b> Producing, Publishing, and Presenting (type work on a computer)/Digital Connection: using a computer to make text features—p. 268</p> <p>See also <b>Home Connect:</b> pp. 84, 128, 146, 216, 230</p>	<p><b>W.1.6.</b> With guidance and support from adults, use a variety of digital tools to produce and publish writing, including in collaboration with peers.</p>

**Common Core State Standards for English Language Arts  
1<sup>st</sup> Grade**

MacMillan/McGraw Hill Reading <i>Wonders, Common Core</i> ©2014 Teacher's Edition	Common Core Progress English Language Arts	Common Core State Standards for English Language Arts
<b>Research to Build Knowledge</b>		
<p><b>Unit 1:</b> T44–T45, T47, T122–T123, T125, T200–T201, T203, T223, T278–T279, T281, T356–T357, T359, T379, T397–T401</p> <p><b>Unit 2:</b> T44–T45, T47, T122–T123, T125, T203–T205, T225, T281, T283, T358, T359, T361, T397–T401</p> <p><b>Unit 3:</b> T44–T45, T47, T122–T123, T125, T200, T201, T203, T278, T279, T281, T356, T357, T359, T397–T401</p> <p><b>Unit 4:</b> T44–T45, T47, T122–T123, T125, T200, T201, T203, T278, T279, T281, T356, T357, T359, T397–401</p> <p><b>Unit 5:</b> T44–T45, T47, T122–T123, T125, T200, T201, T278, T279, T281, T356, T357, T359, T397–T401</p> <p><b>Unit 6:</b> T47, T122, T123, T125, T200, T201, T203, T278, T279, T281, T356, T357, T359, T397–T401</p>	<p><b>Unit 10:</b> 215-217, 218-223, 226</p>	<p><b>W.1.7.</b> Participate in shared research and writing projects (e.g., explore a number of “how-to” books on a given topic and use them to write a sequence of instructions).</p>
<p><b>Unit 1:</b> T398–T400</p> <p><b>Unit 2:</b> T303, T358, T398–T400</p> <p><b>Unit 3:</b> T67, T145, T203, T398–T400</p> <p><b>Unit 4:</b> T122, T398–T400</p> <p><b>Unit 5:</b> T44, T122, T200, T278, T398–T400</p> <p><b>Unit 6:</b> T44, T125, T223, T278, T398–T400</p>	<p><b>Unit 2:</b> 39-41, 44-45, 50</p> <p><b>Unit 4:</b> 94</p> <p><b>Unit 8:</b> 186</p> <p><b>Unit 10:</b> 215-217, 220-223, 226</p>	<p><b>W.1. 8.</b> With guidance and support from adults, recall information from experiences or gather information from provided sources to answer a question.</p>
		<b>W.1.9.</b> (Begins in Grade 4)
<b>Range of Writing</b>		
		<b>W.1.10.</b> (Begins in Grade 4)

**Common Core State Standards for English Language Arts  
1<sup>st</sup> Grade**

MacMillan/McGraw Hill Reading <i>Wonders, Common Core</i> ©2014 Teacher's Edition	Common Core Progress English Language Arts	Common Core State Standards for English Language Arts
<b>Speaking and Listening Standards</b>		
<b>Comprehension and Collaboration</b>		
<p><b>Unit 1:</b> S5, S26, S35, S51, S65, S69, S81, T9, T19, T29, T37, T42, T43, T44, T50, T68, T87, T97, T98, T99, T107, T115, T121, T122, T128, T165, T175, T185, T193, T199, T200, T243, T245, T253, T254, T263, T271, T277, T278, T280, T284, T321, T331, T341, T349, T355, T356, T403</p> <p><b>Unit 2:</b> T9, T44, T87, T122, T164, T204, T245, T323, T358, T403</p> <p><b>Unit 3:</b> T9, T19, T29, T37, T43, T44, T87, T107, T115, T121, T122, T165, T175, T177, T185, T193, T199, T200, T243, T245, T253, T255, T263, T271, T277, T278, T321, T331, T341, T349, T355, T356, T403</p> <p><b>Unit 4:</b> T9, T44, T87, T122, T165, T200, T243, T278, T356, T403</p> <p><b>Unit 5:</b> T9, T19, T29, T37, T43, T44, T50, T87, T97, T107, T115, T121, T122, T128, T165, T166, T175, T185, T193, T199, T200, T206, T243, T244, T253, T278, T263, T271, T277, T284, T321, T322, T331, T341, T349, T355, T356, T362, T403</p> <p><b>Unit 6:</b> T9, T10, T19, T29, T37, T43, T44, T87, T88, T97, T107, T115, T121, T122, T165, T166, T175, T185, T193, T199, T200, T243, T244, T253, T263, T271, T277, T278, T321, T331, T322, T341, T349, T355, T356, T403</p>	<p><b>Connect Across Texts:</b> pp. 35, 79, 123, 171, 211, 255</p> <p><b>Speaking and Listening:</b> 51, 95, 139, 187, 227</p> <p><b>Common Core Review:</b> 52, 96, 140, 188, 228</p>	<p><b>SL.1.1.</b> Participate in collaborative conversations with diverse partners about grade 1 topics and texts with peers and adults in small and larger groups</p> <p><b>SL.1.1.a.</b> Follow agreed-upon rules for discussions (e.g., listening to others with care, speaking one at a time about the topics and texts under discussion).</p>

**Common Core State Standards for English Language Arts  
1<sup>st</sup> Grade**

<p align="center"><b>MacMillan/McGraw Hill Reading Wonders, Common Core ©2014 Teacher's Edition</b></p>	<p align="center"><b>Common Core Progress English Language Arts</b></p>	<p align="center"><b>Common Core State Standards for English Language Arts</b></p>
<p><b>Comprehension and Collaboration, cont.</b></p>		
<p><b>Unit 1:</b> S5, S26, S35, S51, S65, S69, S81, T9, T19, T29, T37, T42, T43, T44, T50, T68, T87, T97, T98, T99, T107, T115, T121, T122, T128, T165, T175, T185, T193, T199, T200, T243, T245, T253, T254, T263, T271, T277, T278, T280, T284, T321, T331, T341, T349, T355, T356, T403</p> <p><b>Unit 2:</b> T9, T44, T87, T122, T164, T204, T245, T323, T358, T403</p> <p><b>Unit 3:</b> T9, T19, T29, T37, T43, T44, T87, T107, T115, T121, T122, T165, T175, T177, T185, T193, T199, T200, T243, T245, T253, T255, T263, T271, T277, T278, T321, T331, T341, T349, T355, T356, T403</p> <p><b>Unit 4:</b> T9, T44, T87, T122, T165, T200, T243, T278, T356, T403</p> <p><b>Unit 5:</b> T9, T19, T29, T37, T43, T44, T50, T87, T97, T107, T115, T121, T122, T128, T165, T166, T175, T185, T193, T199, T200, T206, T243, T244, T253, T278, T263, T271, T277, T284, T321, T322, T331, T341, T349, T355, T356, T362, T403</p> <p><b>Unit 6:</b> T9, T10, T19, T29, T37, T43, T44, T87, T88, T97, T107, T115, T121, T122, T165, T166, T175, T185, T193, T199, T200, T243, T244, T253, T263, T271, T277, T278, T321, T331, T322, T341, T349, T355, T356, T403</p>	<p><b>Connect Across Texts:</b> 35, 79, 123, 171, 211, 255</p> <p><b>Speaking and Listening:</b> 51, 95, 139, 187, 227</p> <p><b>Common Core Review:</b> 52, 96, 140, 188, 228</p>	<p><b>SL.1.1.b.</b> Build on others' talk in conversations by responding to the comments of others through multiple exchanges.</p>

**Common Core State Standards for English Language Arts  
1<sup>st</sup> Grade**

<p align="center"><b>MacMillan/McGraw Hill Reading Wonders, Common Core ©2014 Teacher's Edition</b></p>	<p align="center"><b>Common Core Progress English Language Arts</b></p>	<p align="center"><b>Common Core State Standards for English Language Arts</b></p>
<p><b>Comprehension and Collaboration, cont.</b></p>		
<p><b>Unit 1:</b> S5, S26, S35, S51, S65, S69, S81, T9, T19, T29, T37, T42, T43, T44, T50, T68, T87, T97, T98, T99, T107, T115, T121, T122, T128, T165, T175, T185, T193, T199, T200, T243, T245, T253, T254, T263, T271, T277, T278, T280, T284, T321, T331, T341, T349, T355, T356, T403</p> <p><b>Unit 2:</b> T9, T44, T87, T122, T164, T204, T245, T323, T358, T403</p> <p><b>Unit 3:</b> T9, T19, T29, T37, T43, T44, T87, T107, T115, T121, T122, T165, T175, T177, T185, T193, T199, T200, T243, T245, T253, T255, T263, T271, T277, T278, T321, T331, T341, T349, T355, T356, T403</p> <p><b>Unit 4:</b> T9, T44, T87, T122, T165, T200, T243, T278, T356, T403</p> <p><b>Unit 5:</b> T9, T19, T29, T37, T43, T44, T50, T87, T97, T107, T115, T121, T122, T128, T165, T166, T175, T185, T193, T199, T200, T206, T243, T244, T253, T278, T263, T271, T277, T284, T321, T322, T331, T341, T349, T355, T356, T362, T403</p> <p><b>Unit 6:</b> T9, T10, T19, T29, T37, T43, T44, T87, T88, T97, T107, T115, T121, T122, T165, T166, T175, T185, T193, T199, T200, T243, T244, T253, T263, T271, T277, T278, T321, T331, T322, T341, T349, T355, T356, T403</p>	<p><b>Connect Across Texts:</b> pp. 35, 79, 123, 171, 211, 255</p> <p><b>Speaking and Listening:</b> 51, 95, 139, 187, 227</p> <p><b>Common Core Review:</b> 52, 96, 140, 188, 228</p> <p><b>Home Connect:</b> pp. 10, 40, 54, 84, 98, 128, 146, 176, 190, 216</p>	<p><b>SL.1.1.c.</b> Ask questions to clear up any confusion about the topics and texts under discussion.</p>

**Common Core State Standards for English Language Arts  
1<sup>st</sup> Grade**

<p align="center"><b>MacMillan/McGraw Hill Reading Wonders, Common Core ©2014 Teacher's Edition</b></p>	<p align="center"><b>Common Core Progress English Language Arts</b></p>	<p align="center"><b>Common Core State Standards for English Language Arts</b></p>
<p><b>Comprehension and Collaboration, cont.</b></p>		
<p><b>Unit 1:</b> S8, S14, S26, S38, S44, S50, S56, S68, S74, S80, S86, T50, T128, T245, T403  <b>Unit 2:</b> T20, T99, T177, T257, T324, T403  <b>Unit 3:</b> T11, T21, T31, T89, T99, T109, T167, T177, T245, T255, T333, T403  <b>Unit 4:</b> T11, T21, T89, T98, T167, T177, T255, T333, T403  <b>Unit 5:</b> T21, T99, T245, T255, T323, T333, T403  <b>Unit 6:</b> T21, T99, T245, T265, T323, T333, T403</p>	<p><b>Unit 1:</b> 12-17, 26  <b>Unit 3:</b> 56-67, 58-61, 70  <b>Unit 5:</b> 100-101, 114  <b>Unit 7:</b> 148-149, 162  <b>Unit 9:</b> 192-193, 202  <b>Unit 11:</b> 232-233, 246</p>	<p><b>SL.1.2.</b> Ask and answer questions about key details in a text read aloud or information presented orally or through other media.</p>
<p><b>Unit 1:</b> S65, T165, T200, T243, T278, T403  <b>Unit 2:</b> T50, T243, T403  <b>Unit 3:</b> T9, T44, T321, T356, T403  <b>Unit 4:</b> T9, T87, T206, T321, T403  <b>Unit 5:</b> T9, T50, T128, T165, T200, T206, T243, T278, T284, T362, T403  <b>Unit 6:</b> T9, T44, T50, T321, T356, T403</p>	<p><b>Connect Across Texts:</b> 35, 79, 123, 171, 211, 255  <b>Speaking and Listening:</b> 51, 95, 139, 187, 227  <b>Common Core Review:</b> 52, 96, 140, 188, 228</p>	<p><b>SL.1.3.</b> Ask and answer questions about what a speaker says in order to gather additional information or clarify something that is not understood.</p>
<p><b>Presentation of Knowledge and Ideas</b></p>		
<p><b>Unit 1:</b> S26, S51, S69, S81, T87, T98, T107, T280, T284, T321  <b>Unit 2:</b> T9, T87, T203, T245, T275, T323  <b>Unit 3:</b> T9, T76, T87, T89, T113J, T165, T243, T245  <b>Unit 4:</b> T9, T45, T76, T87, T165, T243, T245, T269R, T279, T273  <b>Unit 5:</b> T9, T87, T107, T113R, T165, T243, T321  <b>Unit 6:</b> T87, T123, T177, T243</p>	<p><b>Share Your Writing:</b> pp. 50, 94, 138, 188, 226  <b>Home Connect :</b> pp. 10, 40, 54, 84, 98, 128, 146, 176, 190, 216</p>	<p><b>SL.1.4.</b> Describe people, places, things, and events with relevant details, expressing ideas and feelings clearly.</p>

**Common Core State Standards for English Language Arts  
1<sup>st</sup> Grade**

<p align="center"><b>MacMillan/McGraw Hill Reading Wonders, Common Core ©2014 Teacher's Edition</b></p>	<p align="center"><b>Common Core Progress English Language Arts</b></p>	<p align="center"><b>Common Core State Standards for English Language Arts</b></p>
<p><b>Presentation of Knowledge and Ideas, cont.</b></p>		
<p><b>Unit 1:</b> T50, T128, T206, T284, T362, T400, T401, T402  <b>Unit 2:</b> T50, T121, T128, T201, T208, T286, T364, T401, T402  <b>Unit 3:</b> T128, T206, T284, T362, T400, T401, T402  <b>Unit 4:</b> T45, T50, T128, T199, T206, T285, T357, T401, T402  <b>Unit 5:</b> T50, T128, T206, T284, T362, T397, T400, T401, T402  <b>Unit 6:</b> T50, T128, T206, T284, T362, T401, T402</p>	<p><b>Unit 2:</b> 46-47  <b>Unit 4:</b> 90-91  <b>Unit 6:</b> 134-135  <b>Unit 8:</b> 182-183  <b>Unit 10:</b> 222-223  <b>Writing Handbook</b>  <b>Step 5: Producing, Publishing, and Presenting</b> (add pictures)—p. 268</p>	<p><b>SL.1.5.</b> Add drawings or other visual displays to descriptions when appropriate to clarify ideas, thoughts, and feelings.</p>
<p><b>Unit 1:</b> T19, T37, T43, T119, T153, T230, T331, T386, T387  <b>Unit 2:</b> T19, T97, T152, T216, T217, T388, T389  <b>Unit 3:</b> T15, T74, T75, T199, T275, T349  <b>Unit 4:</b> T15, T68, T74, T121, T199, T253, T355  <b>Unit 5:</b> T59, T74, T152, T230  <b>Unit 6:</b> T43, T68, T137, T152, T215, T224, T298, T341</p>	<p><b>Speaking and Listening:</b> 50, 94, 138, 186, 226  <b>Speaking and Listening:</b> 51, 95, 139, 187, 227  <b>Home Connect :</b> 10, 40, 54, 84, 98, 128, 146, 176, 190, 216, 230</p>	<p><b>SL.1.6.</b> Produce complete sentences when appropriate to task and situation.</p>



**Common Core State Standards for English Language Arts  
1<sup>st</sup> Grade**

MacMillan/McGraw Hill Reading <i>Wonders, Common Core</i> ©2014 Teacher's Edition	Common Core Progress English Language Arts	Common Core State Standards for English Language Arts
<b>Language Standards</b>		
<b>Conventions in Writing and Speaking</b>		
		<b>L.1.1.</b> Demonstrate command of the conventions of standard English grammar and usage when writing or speaking.
<b>Unit 1:</b> T13, T91, T169, T247, T325 <b>Unit 2:</b> T13, T91, T169, T247, T325 <b>Unit 3:</b> T13, T91, T169, T247, T325 <b>Unit 4:</b> T13, T91, T169, T247, T325 <b>Unit 5:</b> T13, T91, T169, T247, T325 <b>Unit 6:</b> T13, T91, T169, T247, T325	All writing activities throughout text fulfill standard.	<b>L.1.1.a.</b> Print all upper- and lowercase letters.
<b>Unit 2:</b> T19, T28, T29, T37, T42, T43, T51, T77, T97, T106, T107, T115, T120, T121, T129, T155, T175, T184, T185, T193, T198, T199, T207, T233, T253, T262, T263, T271, T276, T277, T285, T311, T389 <b>Unit 4:</b> T97, T107, T199 <b>Unit 5:</b> T19, T29, T37, T42, T43, T51, T115, T121, T129	<b>Unit 2:</b> 39-40, 48, 49, 52 <b>Writing Handbook:</b> <b>Step 4 Editing:</b> Editing Checklist—p. 268	<b>L.1.1.b.</b> Use common, proper, and possessive nouns.
<b>Unit 3:</b> T97, T106, T107, T155, T253, T262, T263, T271, T276, T277, T285, T311 <b>Unit 4:</b> T19, T29, T37, T42, T43, T51	<b>Unit 3:</b> 53-54, 80 <b>Unit 4:</b> 83-84, 93, 96	<b>L.1.1.c.</b> Use singular and plural nouns with matching verbs in basic sentences (e.g., <i>He hops; We hop</i> ).
<b>Unit 6:</b> T19, T29, T37, T42, T43, T51, T77, T97, T106, T107, T115, T120, T121, T129, T155, T175, T185, T193, T198, T199, T207, T233, T253, T262, T263, T271, T276, T277, T285, T311	<b>Unit 6:</b> 127-128, 136, 140	<b>L.1.1.d.</b> Use personal, possessive, and indefinite pronouns (e.g., <i>I, me, my; they, them, their, anyone, everything</i> ).
<b>Unit 3:</b> T97, T106, T107, T115, T120, T121, T129, T155, T175, T184, T185, T193, T198, T199, T207, T233, T253, T276, T277 <b>Unit 4:</b> T19, T28, T29, T36, T42, T43, T77, T175, T185, T193, T198, T199, T207, T233, T253, T263, T271, T276, T277, T285, T311	<b>Unit 4:</b> 83-84, 93,96	<b>L.1.1.e.</b> Use verbs to convey a sense of past, present, and future (e.g., <i>Yesterday I walked home; Today I walk home; Tomorrow I will walk home</i> ).

**Common Core State Standards for English Language Arts  
1<sup>st</sup> Grade**

MacMillan/McGraw Hill Reading <i>Wonders, Common Core</i> ©2014 Teacher's Edition	Common Core Progress English Language Arts	Common Core State Standards for English Language Arts
<b>Conventions in Writing and Speaking, cont.</b>		
<b>Unit 5:</b> T96, T97, T106, T107, T115, T120, T121, T129, T154, T155, T175, T184, T185, T193, T199, T207, T233	<b>Unit 6:</b> 127-128, 137, 140	<b>L.1.1.f.</b> Use frequently occurring adjectives.
<b>Unit 5:</b> T19, T28, T29, T37, T42, T43, T51, T77	<b>Unit 8:</b> 175-176, 185, 188	<b>L.1.1.g.</b> Use frequently occurring conjunctions (e.g., <i>and, but, or, so, because</i> ).
<b>Unit 5:</b> T253, T262, T263, T271, T276, T277, T285, T311	<b>Unit 6:</b> 136	<b>L.1.1.h.</b> Use determiners (e.g., articles, demonstratives).
<b>Unit 5:</b> T331, T340, T341, T348, T349, T354, T355, T363, T389	<b>Unit 8:</b> 175-176, 184, 188	<b>L.1.1.i.</b> Use frequently occurring prepositions (e.g., <i>during, beyond, toward</i> ).
<b>Unit 1:</b> T19, T29, T37, T43, T51, T77, T175, T185, T192, T193, T198, T199, T207, T233, T271, T277, T279, T285, T311, T331, T340, T341, T349, T355, T363, T389, T403, T415 <b>Unit 5:</b> T18, T28, T36, T42, T76, T252, T262, T270, T276, T310	<b>Unit 10:</b> 215-216, 224-225, 228	<b>L.1.1.j.</b> Produce and expand complete simple and compound declarative, interrogative, imperative, and exclamatory sentences in response to prompts.
		<b>L.1.2.</b> Demonstrate command of the conventions of standard English capitalization, punctuation, and spelling when writing.
<b>Unit 2:</b> T253, T262, T263, T265, T271, T272, T273, T277, T279, T285, T287 <b>Unit 4:</b> T97, T175, T185, T193, T207 <b>Unit 5:</b> T129, T185, T193, T198, T207 <b>Unit 6:</b> T97, T107, T120, T121, T129	<b>Unit 2:</b> 39-40, 48, 52 <b>Writing Handbook:</b> <b>Step 4 Editing:</b> Editing Checklist—p. 268	<b>L.1.2.a.</b> Capitalize dates and names of people.
<b>Unit 1:</b> T97, T107, T115, T121, T129, T155, T175, T185, T193, T199, T207, T253, T263, T271, T277, T285, T331, T341, T349, T355, T363 <b>Unit 2:</b> T77, T333, T343, T351, T357, T365 <b>Unit 4:</b> T97, T107, T115, T120, T121, T129 <b>Unit 5:</b> T97, T107, T115, T121, T129	<b>Unit 10:</b> 215-216, 224-225, 228 <b>Step 4 Editing:</b> Editing Checklist—p. 268	<b>L.1.2.b.</b> Use end punctuation for sentences.

**Common Core State Standards for English Language Arts  
1<sup>st</sup> Grade**

MacMillan/McGraw Hill Reading <i>Wonders, Common Core</i> ©2014 Teacher's Edition	Common Core Progress English Language Arts	Common Core State Standards for English Language Arts
<b>Conventions in Writing and Speaking, cont.</b>		
<p><b>Unit 2:</b> T19, T28, T29, T37, T42, T43, T51  <b>Unit 3:</b> T19, T28, T29, T37, T42, T43, T51, T175, T185, T193, T198, T199, T207, T253, T262, T263, T271, T276, T277, T285  <b>Unit 4:</b> T331, T341, T349, T354, T355, T363  <b>Unit 6:</b> T175, T185, T193, T198, T199, T207, T253, T263, T263, T271, T276, T277, T285</p>	<p><b>Unit 4:</b> 83-84, 92, 96</p>	<p><b>L.1.2.c.</b> Use commas in dates and to separate single words in a series.</p>
<p><b>Unit 1:</b> T14, T24, T34, T41, T49, T76, T92, T102, T112, T119, T127, T154, T180, T197, T232, T248, T258, T268, T275, T310, T326, T336, T346, T353, T388  <b>Unit 2:</b> T24, T25, T76, T92, T93, T102, T112, T113, T154, T180, T190, T191, T232, T258, T28, T270, T271, T310, T326, T336, T346, T388  <b>Unit 3:</b> T34, T35, T102, T103, T180, T181, T258, T259, T326, T327  <b>Unit 4:</b> T92, T93, T170, T171, T268, T269, T336, T337, T346, T347  <b>Unit 5:</b> T49, T154, T232, T310, T353  <b>Unit 6:</b> T41, T127, T283, T326, T327, T360, T361</p>	<p><b>Writing Handbook</b>  <b>Step 4:</b> Editing: Editing Checklist (all words are spelled correctly)—pp. 267–268</p>	<p><b>L.1.2.d.</b> Use conventional spelling for words with common spelling patterns and for frequently occurring irregular words.</p>
<p><b>Unit 1:</b> T170  <b>Unit 2:</b> T14, T170, T248  <b>Unit 3:</b> T14, T170, T248, T326  <b>Unit 4:</b> T14, T170, T248, T326  <b>Unit 5:</b> T14, T34, T92, T170, T248, T326  <b>Unit 6:</b> T14, T92, T170, T248, T326</p>	<p><b>Writing Handbook</b>  <b>Step 4: Editing:</b> Editing Checklist (capitalization)—pp. 267–268</p>	<p><b>L.1.2.e.</b> Spell untaught words phonetically, drawing on phonemic awareness and spelling conventions.</p>
<b>Knowledge of Language</b>		
		<p><b>L.1.3.</b> (Begins in Grade 3)</p>

**Common Core State Standards for English Language Arts  
1<sup>st</sup> Grade**

MacMillan/McGraw Hill Reading <i>Wonders</i> , Common Core ©2014 Teacher's Edition	Common Core Progress English Language Arts	Common Core State Standards for English Language Arts
<b>Vocabulary Acquisition and Use</b>		
		<b>L.1.4.</b> Determine or clarify the meaning of unknown and multiple-meaning word and phrases based on <i>grade 1 reading and content</i> .
<b>Unit 1:</b> T68, T117, T195A, T224, T302, T380 <b>Unit 2:</b> T39A, T113C, T146, T226, T269G, T275A, T311, T382, T396 <b>Unit 3:</b> T39A, T68, T113F, T146, T224, T269F, T273A, T302 <b>Unit 4:</b> T35C, T39, T113, T113F, T117A, T191J, T269, T269H, T380 <b>Unit 5:</b> T35, T39, T117, T224, T273A, T302 <b>Unit 6:</b> T39, T113F, T146, T195A, T273A, T302, T380	<b>Unit 1:</b> 9-10, 36, 38	<b>L.1.4.a.</b> Use sentence-level context as a clue to the meaning of a word or phrase.
<b>Unit 4:</b> T101, T111, T118, T126, T136 <b>Unit 5:</b> T113C, T136, T146, T269, T269K, T347 <b>Unit 6:</b> T23, T33, T58	<b>Unit 7:</b> 145-146, 172, 173-174	<b>L.1.4.b.</b> Use frequently occurring affixes as a clue to the meaning of a word.
<b>Unit 4:</b> T136, T146, T347 <b>Unit 5:</b> T113C, T136, T269K, T347 <b>Unit 6:</b> T23, T40, T52, T62, T66, T72, T191J, T292	<b>Unit 5:</b> 97-98, 124, 125-126 <b>Unit 11:</b> 230, 246, 249-250	<b>L.1.4.c.</b> Identify frequently occurring root words (e.g., <i>look</i> ) and their inflectional forms (e.g., <i>looks</i> , <i>looked</i> , <i>looking</i> ).
		<b>L.1.5.</b> With guidance and support from adults, demonstrate understanding of word relationships and nuances in word meanings
<b>Unit 1:</b> T347D <b>Unit 2:</b> T347D <b>Unit 3:</b> T347D <b>Unit 4:</b> T62, T191H <b>Unit 5:</b> T39A, T39B, T296 <b>Unit 6:</b> T35K, T113H, T191M	<b>Unit 11:</b> 229-230, 256, 257-258	<b>L.1.5.a.</b> Sort words into categories (e.g., colors, clothing) to gain a sense of the concepts the categories represent.

**Common Core State Standards for English Language Arts  
1<sup>st</sup> Grade**

MacMillan/McGraw Hill Reading <i>Wonders</i> , Common Core ©2014 Teacher's Edition	Common Core Progress English Language Arts	Common Core State Standards for English Language Arts
<b>Vocabulary Acquisition and Use, cont.</b>		
<b>Unit 3:</b> T347D <b>Unit 5:</b> T39A, T39B <b>Unit 6:</b> T35K, T191M	<b>Unit 11:</b> 229-230, 256, 257-258	<b>L.1.5.b.</b> Define words by category and by one or more key attributes (e.g., a <i>duck</i> is a bird that swims; a <i>tiger</i> is a large cat with stripes).
<b>Unit 1:</b> T8–T9, T20, T30, T86–T87, T164–T165, T194, T242–T243, T320–T321 <b>Unit 2:</b> T8–T9, T38, T39A, T86–T87, T116, T164–T165, T242–T243, T304, T320–T321 <b>Unit 3:</b> T8–T9, T30, T38, T86–T87, T116, T164–T165, T186, T242–T243, T320–T321 <b>Unit 4:</b> T8–T9, T86–T87, T164–T165, T186, T194, T242–T243, T320–T321, T332, T350 <b>Unit 5:</b> T8–T9, T86–T87, T164–T165, T186, T194, T242–T243, T264, T272, T320–T321 <b>Unit 6:</b> T8–T9, T30, T38, T86–T87, T164–T165, T242–T243, T264, T320–T321, T350	<b>Unit 1:</b> 9-10, 36, 38	<b>L.1.5.c.</b> Identify real-life connections between words and their use (e.g., note places at home that are <i>cozy</i> ).
<b>Unit 4:</b> T191H, T302 <b>Unit 5:</b> T113, T113R <b>Unit 6:</b> T191K, T286, T296, T300	<b>Unit 9:</b> 189-190, 212, 213-214	<b>L.1.5.d.</b> Distinguish shades of meaning among verbs differing in manner (e.g., <i>look</i> , <i>peek</i> , <i>glance</i> , <i>stare</i> , <i>glare</i> , <i>scowl</i> ) and adjectives differing in intensity (e.g., <i>large</i> , <i>gigantic</i> ) by defining or choosing them or by acting out the meanings.

**Common Core State Standards for English Language Arts  
1<sup>st</sup> Grade**

<p align="center"><b>MacMillan/McGraw Hill Reading Wonders, Common Core ©2014 Teacher's Edition</b></p>	<p align="center"><b>Common Core Progress English Language Arts</b></p>	<p align="center"><b>Common Core State Standards for English Language Arts</b></p>
<p><b>Vocabulary Acquisition and Use</b></p>		
<p><b>Unit 1:</b> T8–T9, T29, T37, T66, T86–T87, T108, T115, T129, T146, T164–T165, T194, T199, T242–T243, T253, T263, T285, T320–T321, T331, T341, T363</p> <p><b>Unit 2:</b> T8–T9, T19, T29, T37, T43, T51, T86–T87, T97, T107, T116, T121, T129, T164–T165, T175, T185, T193, T201, T209, T242–T243, T265, T273, T279, T320–T321, T333</p> <p><b>Unit 3:</b> T8–T9, T19, T29, T37, T43, T51, T86–T87, T107, T115, T121, T129, T164–T165, T175, T185, T193, T199, T207, T242–T243, T253, T263, T271, T276, T285, T320–T321, T331, T341, T349, T355, T363, T384, T397</p> <p><b>Unit 4:</b> T8–T9, T19, T29, T43, T51, T86–T87, T97, T107, T115, T121, T129, T164–T165, T175, T185, T193, T199, T205, T207, T242–T243, T253, T263, T271, T277, T285, T320–T321, T331, T363</p> <p><b>Unit 5:</b> T8–T9, T19, T29, T37, T43, T51, T86–T87, T97, T107, T115, T121, T129, T164–T165, T175, T185, T193, T199, T207, T229, T242–T243, T253, T263, T271, T277, T285, T320–T321, T331, T341, T349, T355, T363</p> <p><b>Unit 6:</b> T8–T9, T19, T29, T37, T43, T51, T86–T87, T97, T107, T115, T121, T129, T164–T165, T175, T185, T193, T199, T207, T242–T243, T253, T263, T271, T277, T285, T320–T321, T331, T341, T349, T355, T363</p>	<p><b>Words to Know</b>—pp. 14, 16, 18, 20, 22, 24, 58, 60, 62, 64, 66, 68, 102, 104, 106, 108, 110, 112, 150, 152, 154, 156, 158, 160, 194, 196, 198, 200, 202, 234, 236, 238, 240, 242, 244</p> <p><b>Unit 1:</b> 36</p> <p><b>Unit 5:</b> 102-105</p> <p><b>Unit 7:</b> 150-153, 172</p> <p><b>Unit 9:</b> 212</p> <p><b>Unit 11:</b> 256</p>	<p><b>L.1.6.</b> Use words and phrases acquired through conversations, reading and being read to, and responding to texts, including using frequently occurring conjunctions to signal simple relationships (e.g., <i>I named my hamster Nibblet because she nibbles too much because she likes that</i>).</p>