

We focus on technology so you can focus on care

SECURE WIRELESS

Secure wireless access to the Internet is no longer an LTPAC luxury...it's the expected standard. With a secure wireless network from VCPISM, you can maximize efficiency and quality closer to the point-of-care while achieving resident/patient Internet expectations.



Secure Wireless

Connectivity Improves Your Business Productivity

The reality is, secure wireless access to the Internet is no longer a luxury within long-term and post-acute care facilities... it's the expected standard.

Anchored (hardwired) Internet connections may be available throughout your facility, but reliable and secure wireless gives you more... more efficient health-centric care, more productive staff, and more satisfied residents, patients and guests. Bottom line, your facility needs it to maintain the advantage in a more competitive landscape.

VCPISM Advantage

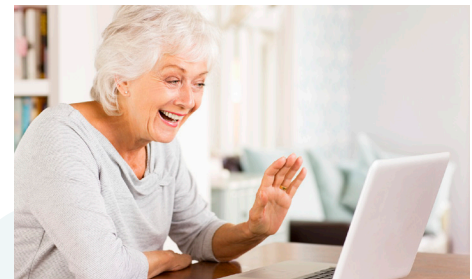
VCPI Secure Wireless provides a competitive advantage

With a secure wireless network from VCPI, you can maximize efficiency and quality closer to the point-of-care while achieving resident/patient Internet expectations. VCPI Secure Wireless allows staff to immediately access and update EHR data and is capable of synching with mobile devices.

Unlike off-the-shelf equipment, VCPI Secure Wireless offers a facility specific design that meets HIPAA and HITECH standards and 24/7 network monitoring and support. Multiple, secure wireless paths separate Internet traffic between residents/patients/guests and your confidential business and health care information.

VCPI Secure Wireless offers:

- ...immediate and convenient Internet accessibility for residents, patients and guests using their preferred connectivity method.
- ...increased staff mobility and security to more productively provide health care and maintain system operability and integrity.
- ...the ability to leverage newer secure wireless technologies to more effectively compete in the continuum of care market.
- ...a cost-effective alternative to extending hardwire cable throughout your facility.
- ...your choice of dedicated or shared wireless controllers to fit your investment parameters.



Separate Internet traffic between residents/patients/guests and your confidential business and health care information

IT Solved.
VCPI

877.908.VCPI | www.vcpi.com



Commitment

About VCPI

- Floor View**
- Monitor > Site Maps > 100 - Meadowview > 100 - Meadowview > **1st floor**
- Data may be delayed up to 15 minutes or more depending on background polling interval
- Zoom 100% 0 feet 50 100 150 200 250 300
- Auto Refresh 5 min
-
- W10100-Rm110
- W10100-Rm104
- W10100-Rm204
- W10100-Rm210
- W10100-Rm216
- AP44d3.caf.0ec5

A customized, professional assessment of the building for best equipment placement

With VCPI, you get a commitment that goes beyond receiving leading-edge solutions. Our team works in tandem with your designated project champion to establish your requirements, configure and validate the deliverable and ensure coordination at every step. Your satisfaction and success are our top priority.

Contact VCPI at 1-877-908-8274 or visit www.vcpi.com today to discover your secure wireless solution.

Headquartered in Milwaukee, WI, VCPI's customized IT solutions solve business challenges inherent in the long-term and post-acute health care (LTPAC) industry and enable clients to focus on taking care of patients and residents. Our nationwide client base relies on VCPI (Virtual Care ProviderSM) experts to deliver innovative and LTPAC-exclusive solutions. Founded in 2000, VCPI is a wholly-owned subsidiary of Extendicare, Inc.

