



## Antimicrobial Fabric Protection

# LINEN



## SHOWER and CUBICLE CURTAINS

### Flame Resistant

Sure-Chek fabrics resist combustion and will self-extinguish when the source of flame is removed.

### Stain Resistant

Most oils, greases, and contaminants may be wiped off with soap, water or mild cleansers. Curtains are easily cleaned in place and maintain a fresh look.

### Antistatic

Sure-Chek fabrics are specially formulated with an enduring antistatic property, "Anstat." It prevents the build-up or retention of electrostatic charges that could interfere with the functioning of sensitive life support equipment.

### Odor Resistant

Sure-Chek fabrics have been treated to resist bacterial odors. Objectionable organic odors are decreased as a result of the active protection against odor-forming bacterial growth on fabric surfaces.

### Durable

Sure-Chek fabrics are incredibly strong, withstanding severe wear and abuse. Extra strength and tear resistance mean extended curtain life.

### Antimicrobial to Protect the Fabric

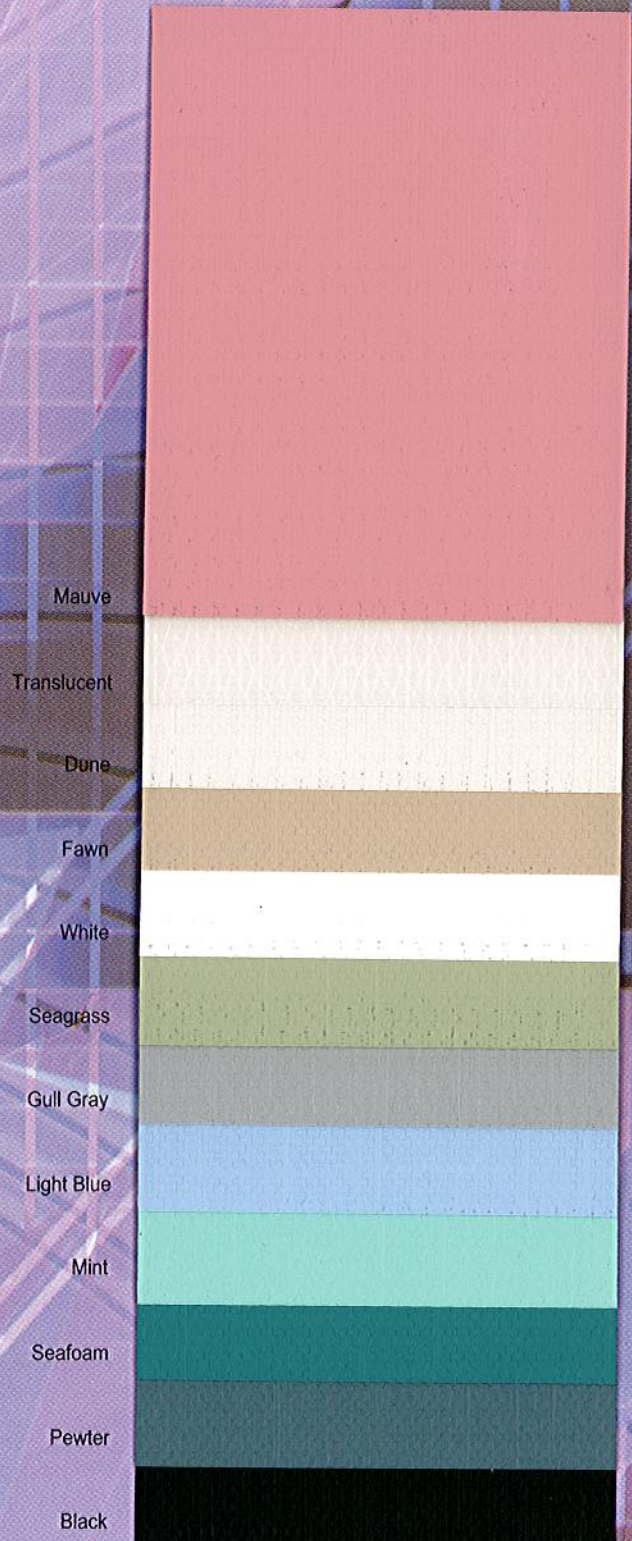
A controlled release system continually sends the antimicrobial agent to the fabric surface. This built-in protection lasts the life of the fabric. It is not a superficial treatment.

### Decorative

Sure-Chek fabrics offer an attractive selection of contemporary colors with a crisp linen finish.

### Economical

Lower replacement costs, less inventory, minimal care and maintenance all add up to true economy. Cost-conscious buyers specify high performance Sure-Chek fabrics for their cubicle and shower curtains.







## SHOWER and CUBICLE CURTAINS

### Recommended Care

Sure-Chek healthcare fabrics offer "clean-in-place" convenience. Any soils or stains that may accumulate on the fabrics' surfaces should be removed periodically for a fresh new appearance. Use neutral soap suds and lukewarm water. Then rinse with water and allow fabric to dry.

Hard to Clean Spots: Standard household/vinyl cleansers and/or a soft bristle brush can be used for removing troublesome spots or stains. Heavy "dried on" soil may first require soaking to loosen. **DO NOT USE HARSH CLEANSERS OR SOLVENTS.**

Herculite Products, does not recommend the laundering of Sure-Chek healthcare fabrics since laundering may substantially decrease the useful life of these fabrics. However, if laundering is required, follow the procedures of the International Fabricare Institute:

1. Wash and rinse according to the "Synthetic Washing Procedure for Coated Fabrics" with temperatures not exceeding 100° F. (see below).
2. Extract water with centrifugal extractor.
3. Tumble dry in a steam dryer (not gas) at 120° F. maximum. For tailored, precise fitted items, tumble dry without heat or air dry. **DO NOT IRON.**

### Synthetic Washing Procedure for Coated Fabrics

(International Fabricare Institute Commercial Washroom Procedures)

| Operation | Water | Time Level | Maximum Temperature | Supplies              |
|-----------|-------|------------|---------------------|-----------------------|
| 1st Suds  | High  | 5 Min.     | 100° F              | Neutral Soap & Alkali |
| 2nd Suds  | High  | 10 Min.    | 100° F              | Neutral Soap & Alkali |
| 1st Rinse | High  | 3 Min.     | 100° F              | Water                 |
| 2nd Rinse | Low   | 3 Min.     | 90° F               | Sour to pH 5.0        |

Use a slow speed machine. Stop the wash wheel for draining and refilling between each cycle.