

# AMTEC LASERS



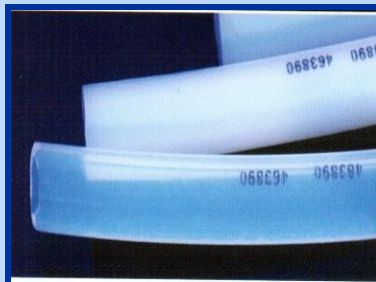
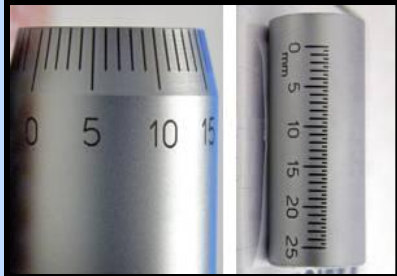
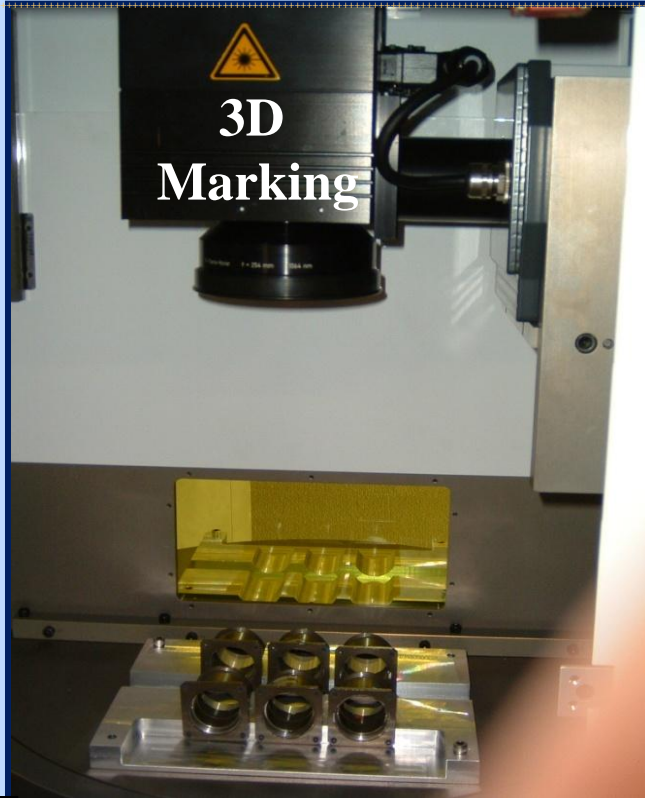
Laser Solutions since 1995

## LASER SYSTEMS

Laser type: CO<sub>2</sub>; Fiber/Yag/YVO<sub>4</sub>: IR, Green & UV

Speeds: Nano; Pico and Femto seconds

For: Marking, Engraving, Scribing, Micro-machining, Cutting, Annealing, Drilling & more.

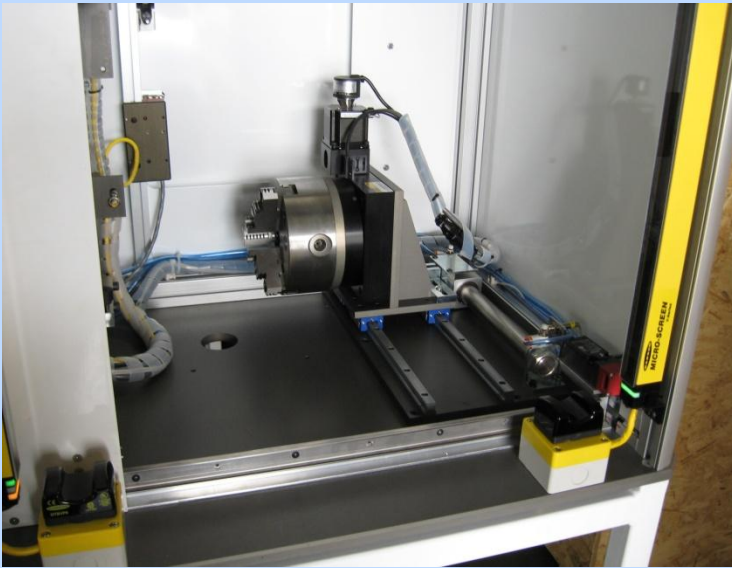


**AMTEC - Applied Manufacturing Technologies, Inc.**

Website: [www.amteclasers.com](http://www.amteclasers.com)

E-mail: [sales@amtecinc.com](mailto:sales@amtecinc.com)

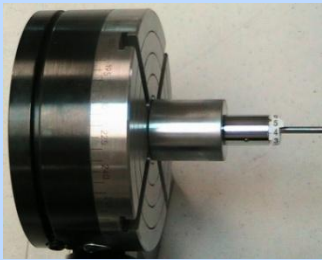
# LASER MARKING SYSTEMS



**360° Rotary Marking Module w/linear shuttle to slide the module In & Out of the Marking Field**



**Laser Machine with Precision Index Table for higher thru-put**



**Color Laser Engraving Machine with choice of any 4 colors**



**Laser Work Station with X-Y Stage and Fume Extractor (cycle time: 0.103 sec.)**



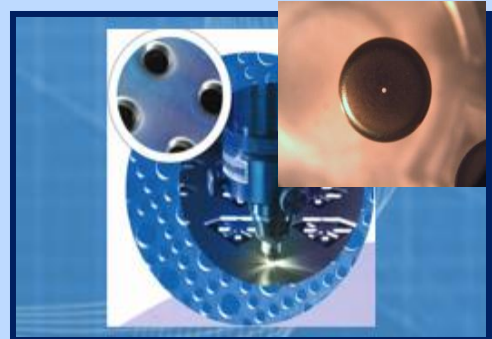
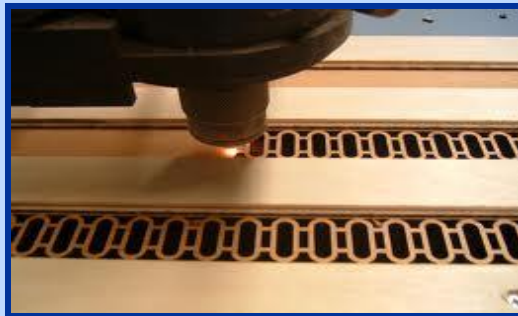
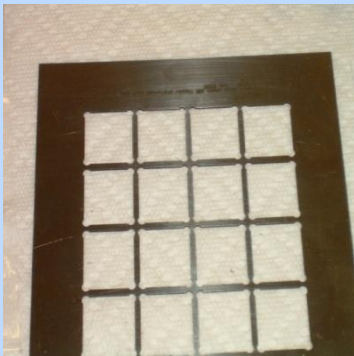
# LASER CUTTING, DRILLING & MICRO-MACHINING SYSTEMS



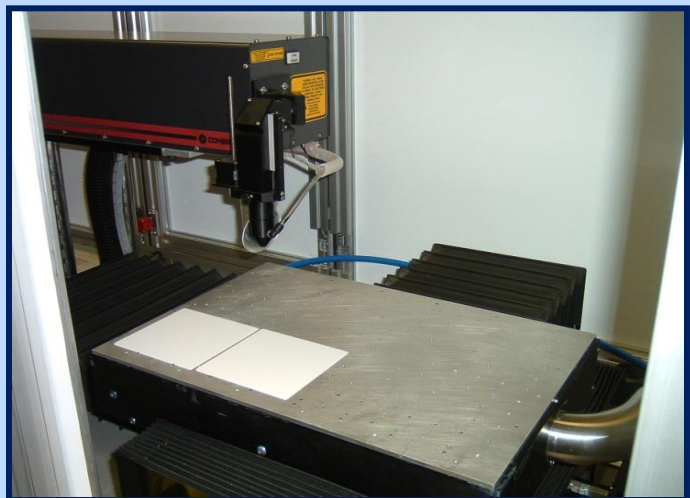
**Laser Work Station with Fixed Beam Delivery and 5 axes Part Handling System**



**Laser cutting with Nitrogen assist for clean & deep cutting & Micro-machining**



**Laser Scribing with 5 axes system**



**Laser Cutting System w/Fixed Beam Delivery and Programmable X-Y-Z axes**

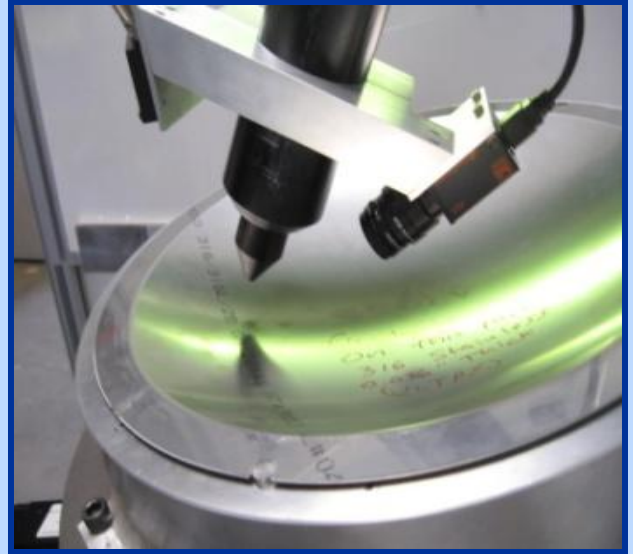
**AMTEC - Applied Manufacturing Technologies, Inc.**  
Website: [www.amteclasers.com](http://www.amteclasers.com)

E-mail: [sales@amtecinc.com](mailto:sales@amtecinc.com)

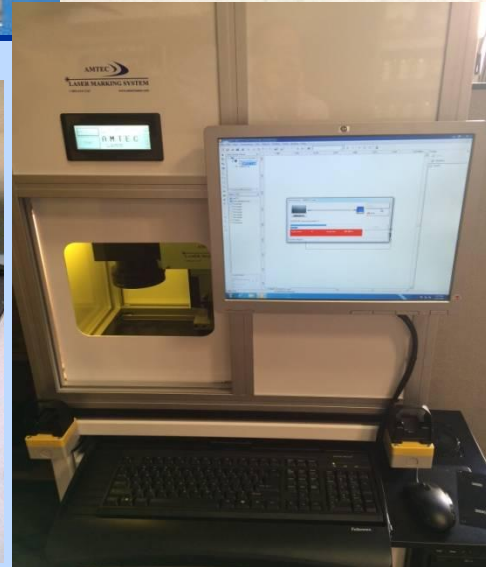
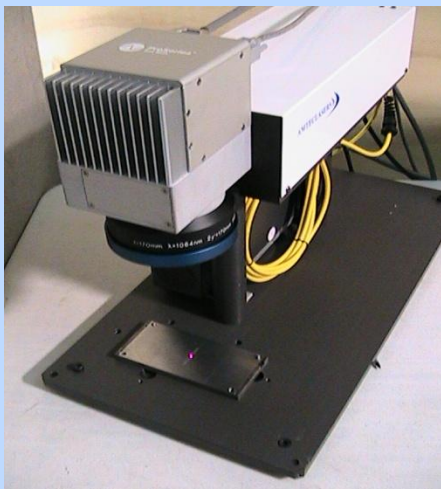
# LASER ENGRAVING & ETCHING SYSTEMS



**Laser Work Station: 3 Marking Heads integrated with 1 laser source**



**Laser Scribing on concave surface with vision system**



**Compact Fiber Laser bench-top work & Floor model stations for marking & engraving.**

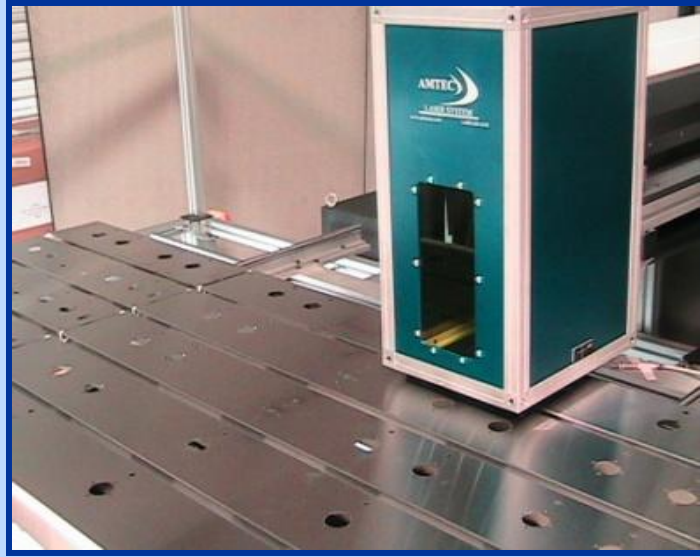
**AMTEC - Applied Manufacturing Technologies, Inc.**  
Website: [www.amteclasers.com](http://www.amteclasers.com) E-mail: [sales@amtecinc.com](mailto:sales@amtecinc.com)



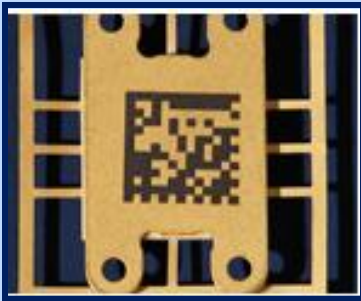
# LASER SYSTEMS



Z-axis with Auto-Focus for Laser Focal Length, 5x6 matrix, parts with multiple height



Laser Machine with Precision Index Table for higher thru-put



Laser Marking System w/Rotary Index table for higher production capacity.



Laser System with 2 stations and a Linear shuttle for higher thru-put.

**AMTEC - Applied Manufacturing Technologies, Inc.**

Website: [www.amteclasers.com](http://www.amteclasers.com)

E-mail: [sales@amtecinc.com](mailto:sales@amtecinc.com)

# LASER SYSTEMS



Label Marking w/Auto-feed, Programmable Cut-to-length unit and Fume Extractor.



Laser Machine with manual Z-axis and digital display



6-Axes Robot Handling Medical Implants for Contrast Laser Marking on UHMWPE



Laser Work Station with programmable Z-axis for focal length adjustment.

Applied Manufacturing Technologies, Inc.  
1464 N. Hundley Street, Anaheim, CA 92806

Website: [www.amteclasers.com](http://www.amteclasers.com)

E-mail: [sales@amtecinc.com](mailto:sales@amtecinc.com)

