

# AMTEC

Applied Manufacturing Technologies, Inc.

## LENS MARKING SYSTEMS



**AMTEC** Introduces the next generation **Lens Marking Equipment**. This bench top unit is specially designed for Optical Laboratory applications. It consist of a pad printer with the capacity to “**Inspect and Print on Optical & Ophthalmic Lenses**”. This user friendly State of the Art Printer with the most desirable feature to view Fiducial marks within clear and tinted, Progressive & Transition lenses using our patented **High Res. Vision Inspection System** or optional **SMART VISION SYSTEM** for Automatic inspection.

Following **Lens Marking System** configurations are available:

Model #	LM50-1	LM75-1	LM115-1	LM50-2	LM75-2	LM115-2
Cup Size Ø	65mm	90mm	130mm	65mm	90mm	130mm
Print Size Ø	50mm	75mm	115mm	50mm	75mm	115mm
# of Lenses	1	1	1	2	2	2
Speed PPH	300 to 500*	300 to 500*	300 to 500*	200 to 400*	200 to 400*	200 to 400*

\*Note: Higher speed available with optional rotary index table

**AMTEC - Applied Manufacturing Technologies, Inc.**

Website: [www.amtecinc.com](http://www.amtecinc.com)

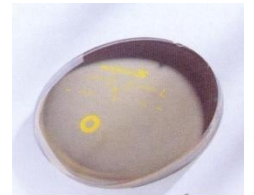
E-mail: [sales@amtecinc.com](mailto:sales@amtecinc.com)

# HIGH SPEED LENS MARKING



## **Lens Marking Systems** with following features:

- \* Vision system with 1 or 2 cameras.
- \* Back Lighting w/adjustable intensity for clear & tinted lens
- \* Lens Clamping mechanism; mechanical/vacuum
- \* Maximum print area of 50mm (2"), 75mm (3") or 115mm (4.5") Ø
- \* Print 1 or 2 lens at a time
- \* Manual/Automatic alignment using "**High Res. Vision System**"
- \* Automatic alignment with software interface (computerized alignment available).
- \* Surface Pre-Treat for enhanced adhesion.
- \* Drying station for fast curing of Epoxy & UV ink.
- \* Auto-load and Auto-unload with Pick and Place



## System functions consist of any combinations of the above features:

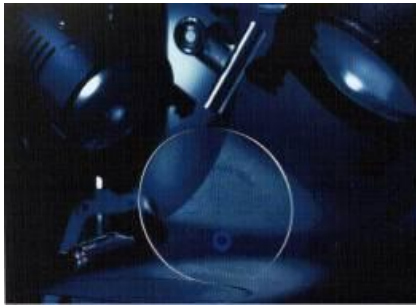
- \* Linear Shuttle with Vision system and Printing machine.
- \* Rotary Index System with vision system and printing machine for higher output .
- \* Number of stations is a function of number of processes required.
- \* Single or Multiple Lens printing.

**AMTEC - Applied Manufacturing Technologies, Inc.**

Website: [www.amtecinc.com](http://www.amtecinc.com)

E-mail: [sales@amtecinc.com](mailto:sales@amtecinc.com)

# LENS LASER ENGRAVING SYSTEMS



## POTENTIAL APPLICATIONS:

- Fiducial (water) marks on Progressive lens.
- Special invisible markings for counterfeit protection.
- Serial #, Bar Code and 2D matrix.
- Customization for labs, customers etc.



## Laser Marking System with the following features:

- Laser – with fine beam for high resolution in print quality.
- Marking speeds of up to 8,000 mm/sec.
- High Speed, High Accuracy Precision Scan Head with galvanometer motors.
- Field of View lens: 4" to 12"; other sizes are available
- Easy access to CAD and graphics program e.g. dwg; dxf; ai; jpg; tif; pcx; bmp etc.
- Alphanumeric and Full Graphics marking capability.
- Linear, Circular and Angular/Reverse marking capability.
- Multiple true type font selection; Individual and dot matrix fonts.
- Barcodes, 2D matrix and OCR are **standard features**, not options;
- Graphics, logos, symbols, Sequential and Batch numbering etc.
- On-the-fly marking.
- User friendly software.
- Self Diagnostic laser parameters visible on the computer screen.

**AMTEC - Applied Manufacturing Technologies, Inc.**

Website: [www.amtecinc.com](http://www.amtecinc.com)

E-mail: [sales@amtecinc.com](mailto:sales@amtecinc.com)

# ULTRASONIC LENS CLEANING

## Standard Industry tubs



- Single and multiple cleaning station
- Sound and heat insulation
- Bevelled work surface prevents liquid from dripping
- Protection against dry running
- Ultrasound generator integrated into the device
- Temperature regulation
- Useful capacities of 50, 70, 110, 170, 250 liters
- Working frequencies 20, 25, 40 KHz
- Overflow edge with connection (set watertight)

## Generators for ultrasonic cleaning



- Constant power output +/- 2%, regardless of level of fill, bath temperature, load and network fluctuations.
- Adjustable power outputs between 20% and 100%
- Fully automatic regulation and monitoring
- Optional communication via RS-232 or RS-485

## Part Handling Systems

- Pick & Place unit with all tooling
- Customized to your specific needs
- Single and multiple cleaning stations
- Programmable with Touch Screen controls
- Precision X-Y & Z Positioning



# AMTEC

**Applied Manufacturing Technologies, Inc.**

For more info. Please contact Sales Dept.

AMTEC - Applied Manufacturing Technologies, Inc.

3565 East Enterprise Drive, Anaheim, CA 92807

Tel: (888) 634-1143; (714) 630-9530; Fax: (714) 630-9531

Website: [www.amtecinc.com](http://www.amtecinc.com)

E-mail: [sales@amtecinc.com](mailto:sales@amtecinc.com)