



# Display Driver Guide

## Instructions for Uninstalling and Reinstalling a Graphic Card Driver XP:

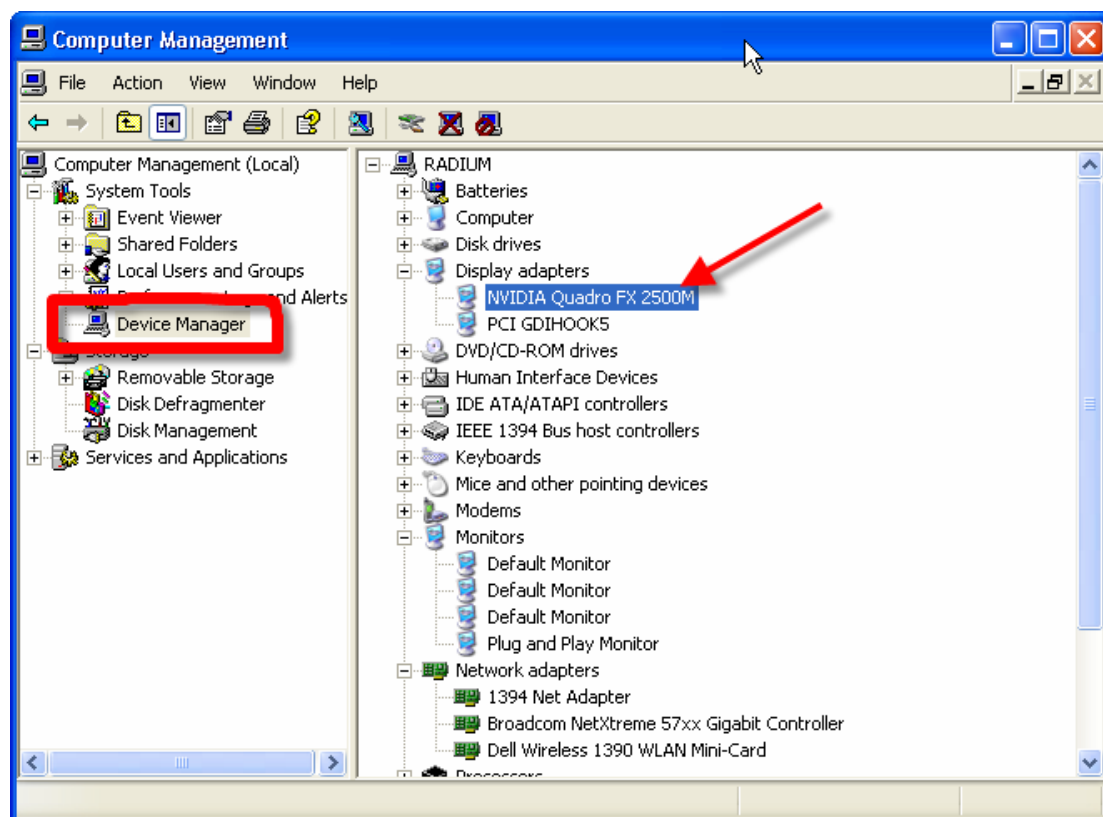
**STEP 1:** Download latest SOLIDWORKS-supported driver

- 1) Go to this link - <http://www.solidworks.com/sw/videocardtesting.html>
- 2) Save this to a local location on the PC as the network will not be available in later steps.

**STEP 2:** Reboot PC in safe mode, please see your PC user guide for details

**STEP 3:** Uninstalling current driver

- 1) Right click on my computer and select manage
- 2) Select device manager
- 3) Select display adaptors
- 4) Right click on your graphic card, select uninstall



**STEP 4:** Reboot your machine in safe mode

**STEP 5:** CANCEL “Found new hardware wizard”

**STEP 6:** Double click downloaded file to install the graphic card driver

**STEP 7:** Once complete reboot your machine in normal mode

**STEP 8:** Verify all settings; check your graphic card control panel

**NOTE:** *Some cards and drivers require a particular software setting. This is noted in the approved list on the SOLIDWORKS webpage by a red three dimensional cube in the notes section. If this is present be sure and select the SOLIDWORKS profile for the card in the advanced display settings.*