



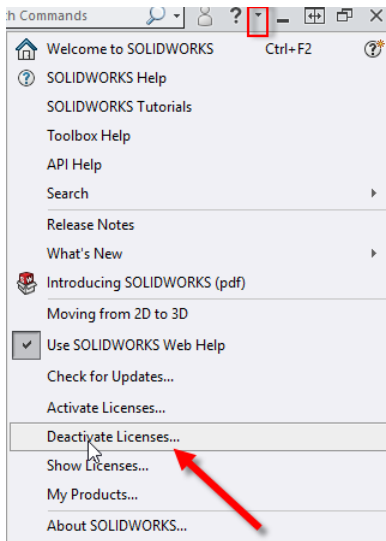
Guide to Modify an Install

When activating a new serial number or changing the different programs available, this guide will take you step-by-step through the process to complete it.

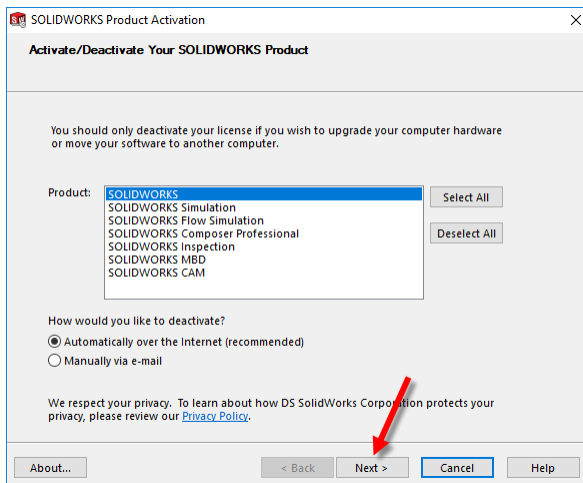
From SOLIDWORKS:

***Note:** If adding a totally new license for SOLIDWORKS itself, skip to Step 3.

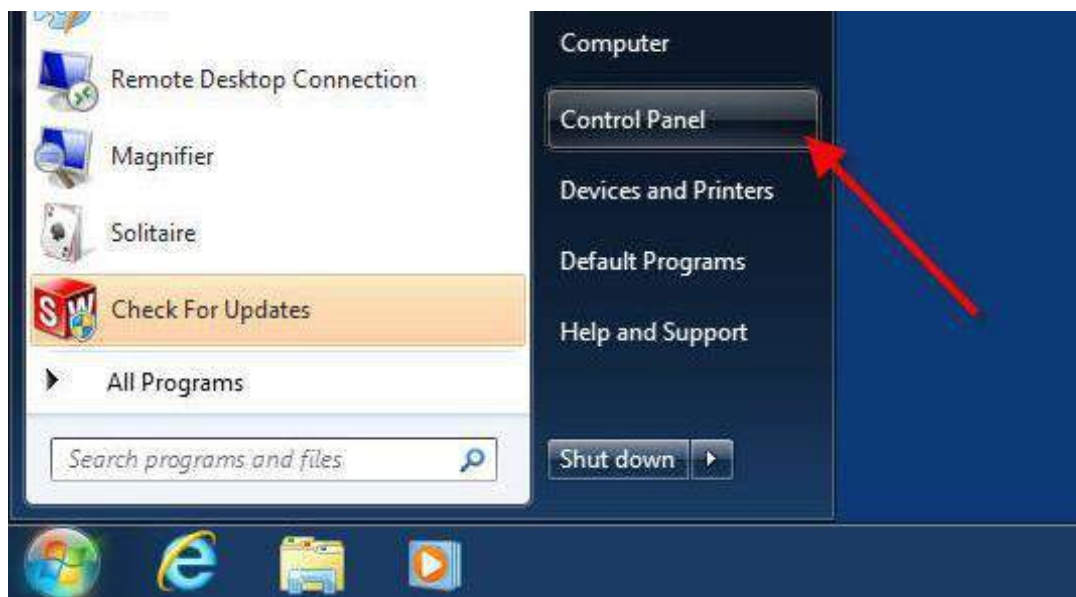
STEP 1: Navigate to the help drop-down menu to the right of Window and select **Deactivate** or **Transfer** depending on the Version of SOLIDWORKS:



STEP 2: Enter your email address if needed and click **Next**. Upon successful deactivation and transfer, click **Finish**:



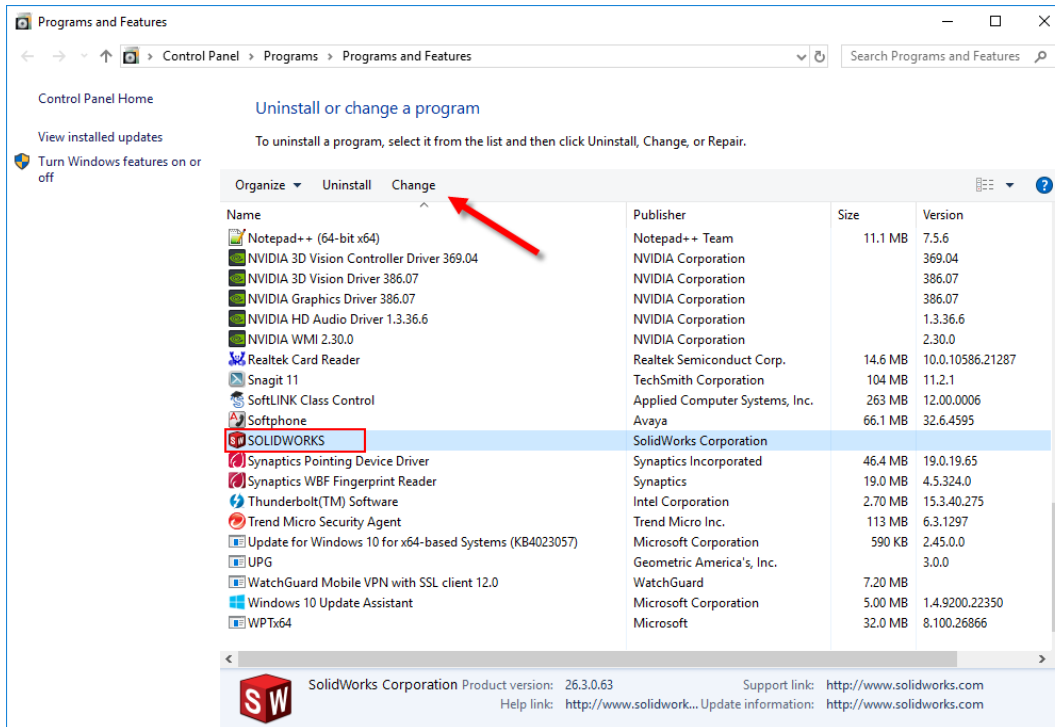
STEP 3: Navigate to your Start menu and click Control Panel:



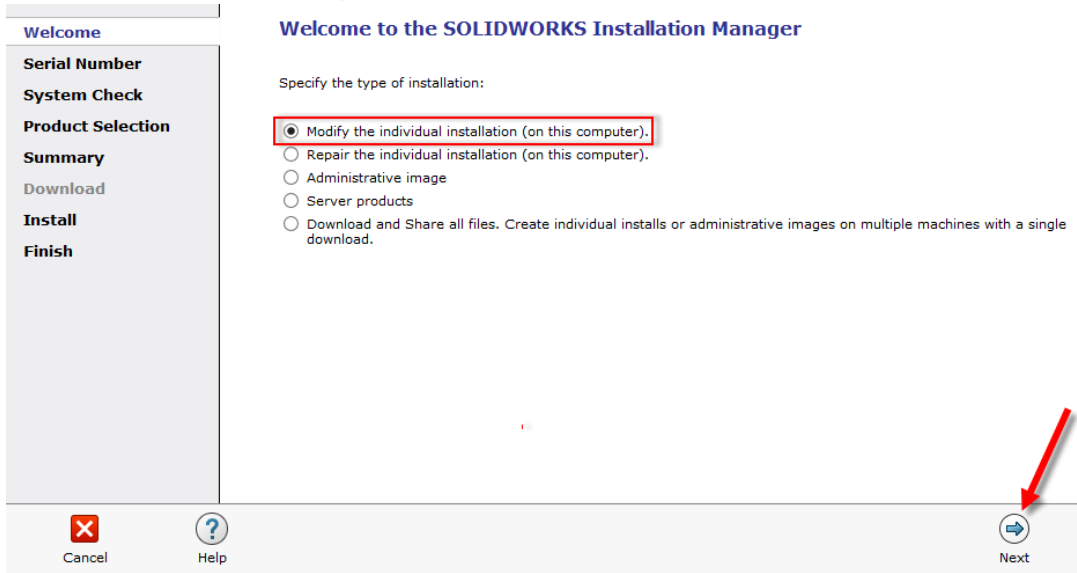
STEP 4: From the Control Panel, select Uninstall a Program:



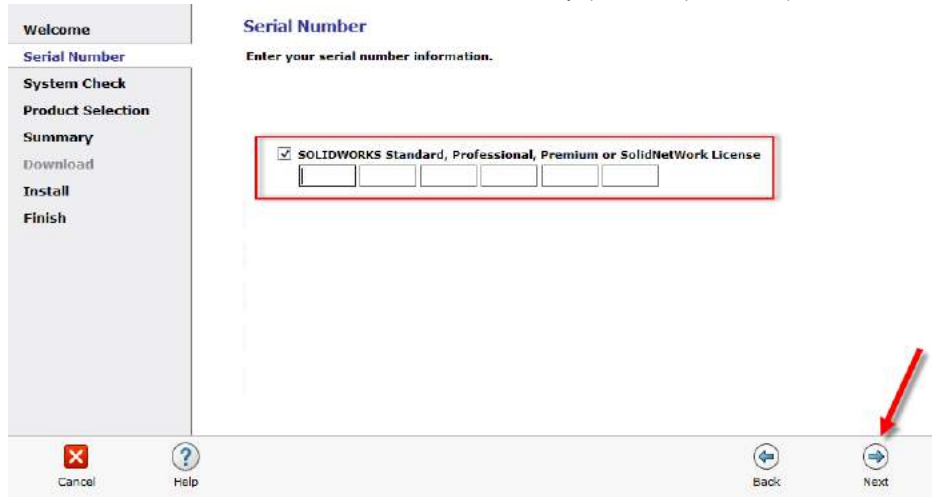
STEP 5: Select SolidWorks and click Change:



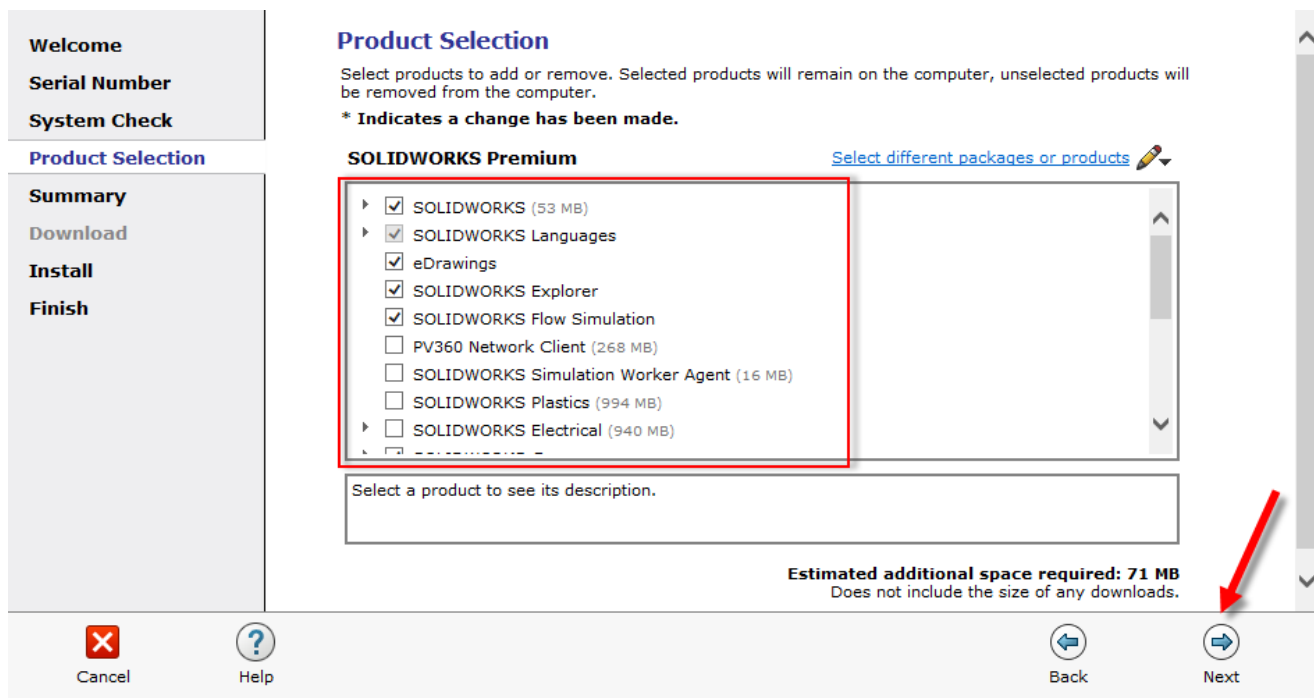
STEP 6: Select the Modify the Individual Installation option and click Next:



STEP 7: Enter the SOLIDWORKS License Key (and any others) and click **Next**:



STEP 8: Verify desired products are selected and click **Next**:



STEP 9: Select **Modify Now** (unless changes are desired):

Summary

Products to Add CHANGE

Note: Required system components will be installed (18 MB): Microsoft C++ Redistributable (x64) and swactwiz

Products to Remove CHANGE

There are no products selected. Click **CHANGE** to choose your products.

Download Options CHANGE

Installation Location CHANGE

Toolbox/Hole Wizard Options CHANGE

Estimated additional installation size: 71 MB

Cancel Help Back **Modify Now**

STEP 10: If a server search window pops up, choose **Yes**:

SolidWorks Installation Manager

The Installation Manager cannot verify this server exists:
25734@PC. Make sure you typed the name correctly. Do you want
to continue using this server name?

Yes No

STEP 11: To complete the process, click **Finish**:

Welcome
Serial Number
System Check
Product Selection
Summary
Download
Install
Finish

Installation is Complete

Show me What's New in SOLIDWORKS

Join the SOLIDWORKS Customer Experience Improvement Program

Participation helps improve the quality and stability of SOLIDWORKS products. SolidWorks Corp. does not access or collect model data or information about any of your other software applications. Participation does not impact the performance of SOLIDWORKS products.

[Tell me more](#)

Yes, I want to join
 No, thank you
 Remind me later

Thank you for joining!

Help Finish