

## Looking for a Barracuda Message Archiver alternative?

SIMPLER MAINTENANCE PLANS, UNPARALLELED EXPORT AND OUTSTANDING SUPPORT.

**Jatheon is an email archiving specialist that provides email, social media and mobile archiving solutions and clear, all-in-one support and hardware refresh packages.**

Jatheon's on-prem archiving solutions are made with industry's best enterprise-grade hardware and come with 24/7 support and monitoring, a free hardware refresh program and the fastest advanced search available on the market.



## Why switch from Barracuda to Jatheon?

We explored hardware and software features essential in email archiving and created a comparison table giving a short summary of the two solutions:

FEATURES	BARRACUDA	JATHEON
Hardware*	*****	*****
Expandable*	Yes Using stackable appliances	<b>Yes</b> Using cost-effective expansion modules
Search speed*	*****	*****
Email export*	*****	*****
Email import*	*****	*****
Free hardware refresh*	Yes, depending on your plan	<b>Yes</b>
User roles	Non-customizable	Fully customizable
Social media archiving*	<b>No</b>	All major social media channels
Mobile Archiving*	<b>No</b>	<b>Yes</b>
Technical support	*****	*****

\*explained in detail in the section below

# Top 10 features you're missing with Barracuda

## 1. Best Advanced Search in the industry

Would you like to see improvement when navigating the interface and searching the archive? Jatheon's easy-to-use advanced search lets you create and execute complex searches by filtering emails matching certain criteria, keywords and phrases. Based on latest search technology, it allows you to search through large databases and pinpoint exact data in a matter of seconds.

## 3. Advanced Export

Struggling with exporting large amounts of data? Although bulk migrations aren't the primary purpose of email archiving solutions, we believe that a great email archiver needs to have a robust bulk export functionality. With Jatheon, the default maximum size of the exported PST file is 3 GB, but can be customized to up to 64GB, depending on total RAM size. That's 3-30 times faster than what you currently have. Moreover, Jatheon's advanced export runs silently in the background and frees up the user interface for other tasks.

## 5. Superior data availability

In Jatheon, we know there are more advanced and less fragile storage-saving processes than stubbing. We want you to have all your data available now and free of errors. That's why we prioritize data integrity features like end-to-end data full checksum protection, corruption-proof root file system and self-healing data sets that prevent silent data corruption and ensure long-term data availability.

## 6. EML Import

If you had another email archiver before Barracuda, you probably know it wasn't painless to import historical files in PST form. With Jatheon, you will be able to ingest PST and EML legacy data stored on a local shared drive.

## 2. Export to PDF

Need better export options than PST and ZIP? With Jatheon, exporting email has never been easier. The enhanced export feature lets you export your search results to PST, EML or PDF file formats. Exporting to PDF is a convenient way of offloading emails, especially useful for smaller exports and reports. There's also a print option directly in the interfaces, which saves time and effort.

## 4. Excellent expandability plans

Jatheon's archiving appliances can be easily expanded by adding cost-effective expansion modules with extra storage ranging from 8 to 96 TB. Expanding your storage in such a way is much easier and cheaper, as you don't have to purchase the entire appliance and you can still search through both the primary appliance and the expansion unit.

**cCore 8x**  
(6TB available)

**Xpand 8x**  
(Additional 6TB)

**cCore 12x**  
(10TB available)

**Xpand 12x**  
(Additional 10TB)

**cCore 24x**  
(16TB available)

**+** **Xpand 24x**  
(Additional 16TB)

**cCore 48x**  
(33TB available)

**Xpand 48x**  
(Additional 33TB)

**cCore 96x**  
(66TB available)

**Xpand 96x**  
(Additional 66TB)

## 7. Free hardware refresh

Confused about Barracuda's additional services? Unsure if you're eligible for free hardware refresh? In Jatheon, every archiving solution comes with a clearly structured customer service and maintenance plan that includes free hardware refresh after 4 years, regardless of the appliance model or support plan.

### 8. Enterprise grade hardware on all models

If your Barracuda archiver is slowing down as it gets full, that's because it's SATA-based. All Jatheon appliance models have superior hardware features such as ECC memory, SAS hard drives and RAID-Z architecture, improving overall IT performance and ensuring speed and data protection.

### 10. Better customer service

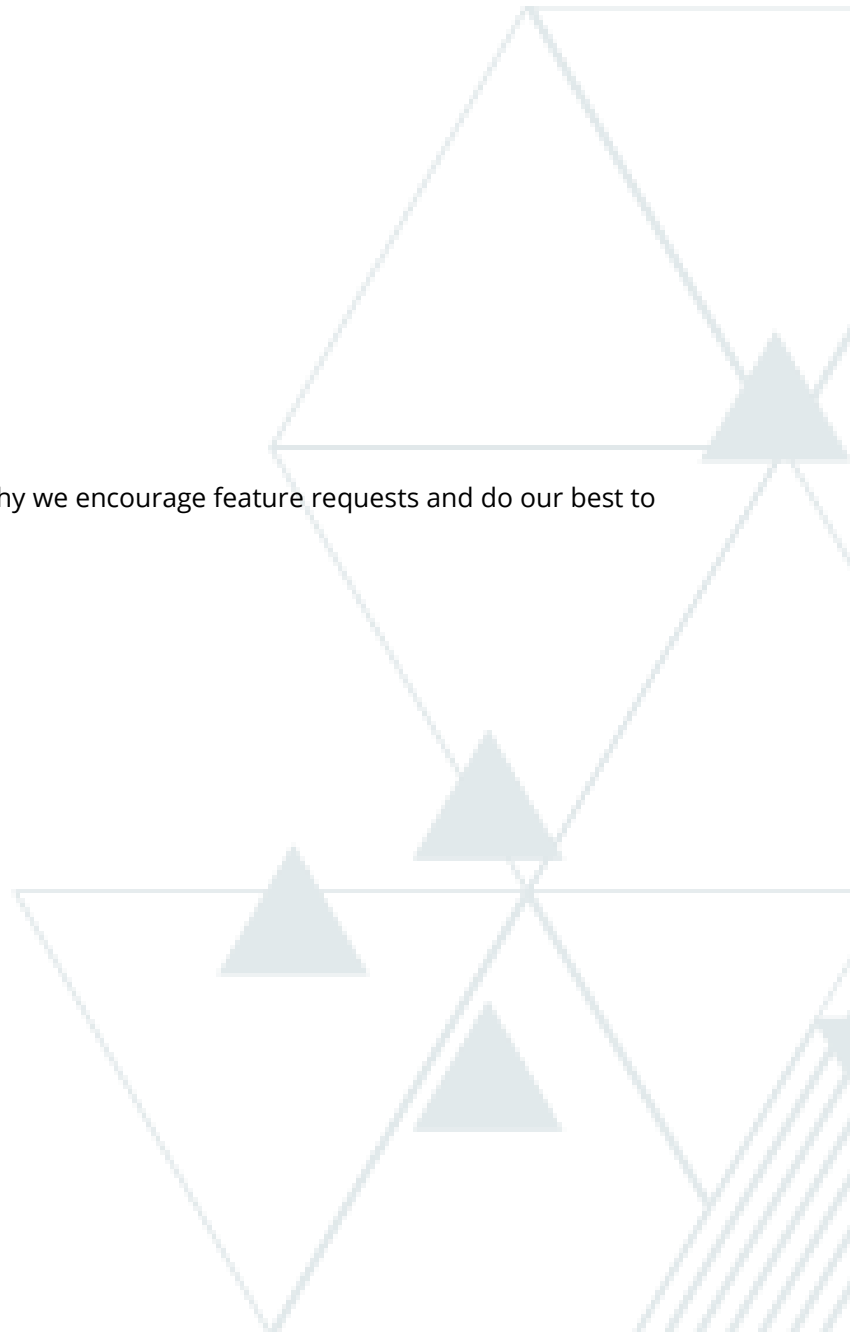
Apart from a comprehensive knowledge base and detailed technical documentation, Jatheon boasts a fully dedicated tech support team that continuously gets 100% customer satisfaction rating. We're talking real, human tech support, where every engineer can help.

## Missing a feature? Let us know!

In Jatheon, we put customer satisfaction first. That's why we encourage feature requests and do our best to include them in our roadmap.

### 9. Social media and mobile archiving

Jatheon can be your single archiving source. Apart from email, files and attachments, Jatheon offers archiving support for all major social media channels, text messages, phone calls and voicemail.



# Jatheon vs. Barracuda - Basic Features Comparison

Get a closer look at some of the differences between Barracuda's and Jatheon's software features.

## Simple Search

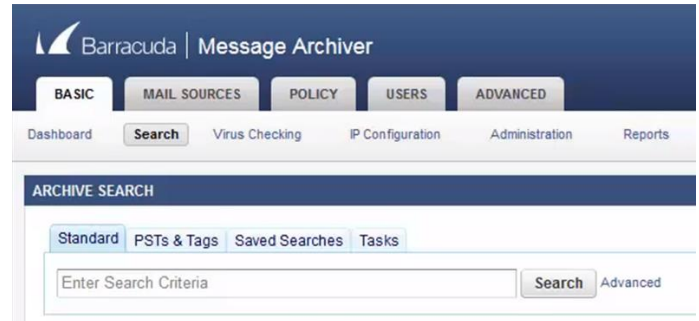
Do a simple search with a keyword, a phrase or save this search for later.

SEARCH FIELDS  Sender  Recipients  Subject  Body  Attachment

Enter keyword

Date Range (From - To)

Jatheon cCore Simple Search



Barracuda | Message Archiver

BASIC MAIL SOURCES POLICY USERS ADVANCED

Dashboard Search Virus Checking IP Configuration Administration Reports

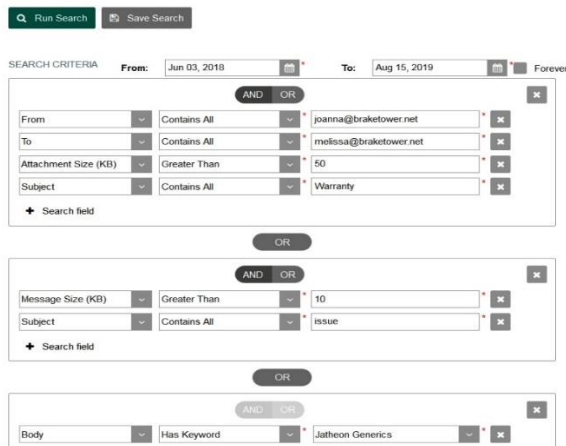
ARCHIVE SEARCH

Standard PSTs & Tags Saved Searches Tasks

Enter Search Criteria

Barracuda MA Simple Search

Jatheon's Simple Search lets you search through parts of emails, as well as specify whether you're searching your own mailbox or other mailboxes too. Unlike Barracuda, Jatheon offers a simple, yet powerful search functionality designed to save time and made with users in mind.



Run Search Save Search

SEARCH CRITERIA From: Jun 03, 2018 To: Aug 15, 2019 Forever

From Contains All joanna@braketower.net

To Contains All melissa@braketower.net

Attachment Size (KB) Greater Than 50

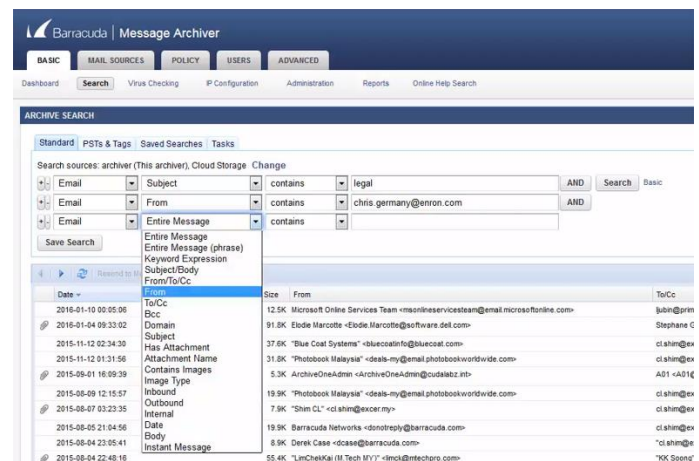
Subject Contains All Warranty

Message Size (KB) Greater Than 10

Subject Contains All issue

Body Has Keyword Jatheon Generics

Jatheon cCore Advanced Search



Barracuda | Message Archiver

BASIC MAIL SOURCES POLICY USERS ADVANCED

Dashboard Search Virus Checking IP Configuration Administration Reports Online Help Search

ARCHIVE SEARCH

Standard PSTs & Tags Saved Searches Tasks

Search sources: archiver (This archiver), Cloud Storage Change

Email Subject contains legal

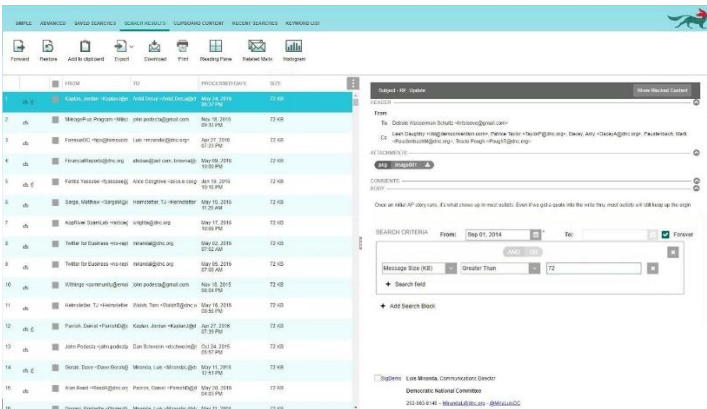
Email From contains chris.germany@enron.com

Email Entire Message contains

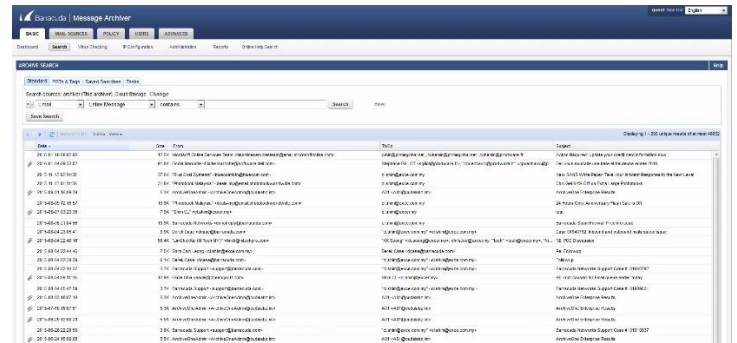
Date	Size	From	To/Cc
2016-01-10 00:05:06	12.5K	Microsoft Online Services Team <msonline...@microsoft.com>	Subin@pm
2016-01-04 09:33:02	91.8K	Elode Marcotte <Elode.Marcotte@software.dell.com>	Stephane C
2015-11-12 02:34:30	37.6K	"Blue Coat Systems" <bluecoat@bluecoat.com>	clshim@ex
2015-11-12 01:31:56	31.8K	"Photobook Malaysia" <deals-my@photobookworldwide.com>	AD1 +AD1@ex
2015-08-01 18:09:39	5.3K	ArchiveOneAdmin <ArchiveOneAdmin@cloudalibz.net>	clshim@ex
2015-08-09 12:15:57	19.9K	"Photobook Malaysia" <deals-my@photobookworldwide.com>	clshim@ex
2015-08-07 03:23:35	7.9K	"Shim CL" <clshim@excer.my>	clshim@ex
2015-08-05 21:04:56	19.9K	Barracuda Networks <donotreply@barracuda.com>	clshim@ex
2015-08-04 23:05:41	8.9K	Derek Case <dcase@barracuda.com>	"clshim@ex
2015-08-04 22:48:16	55.4K	"LinChenKai (IT Tech IN)" <linc@intechpro.com>	"KK Soong"

Barracuda MA Advanced Search

Jatheon's Advanced Search allows compliance officers and administrators to search through millions of emails and end up with a manageable number of results to review. Superior system logic based on search blocks and containers lets you construct complex searches and filter results easily.

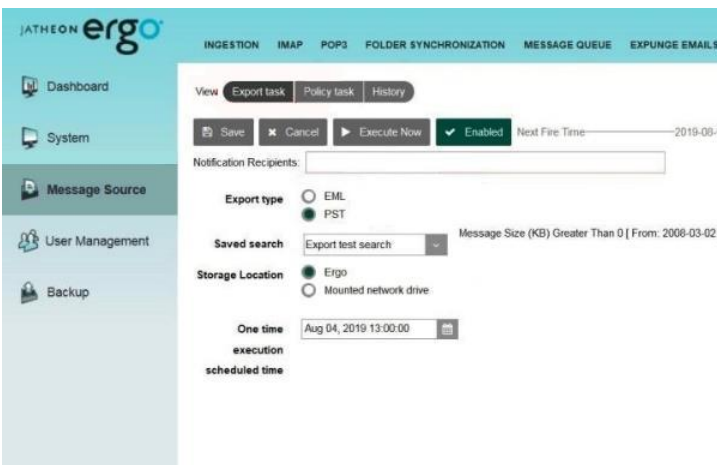


Jattheon cCore Search Results

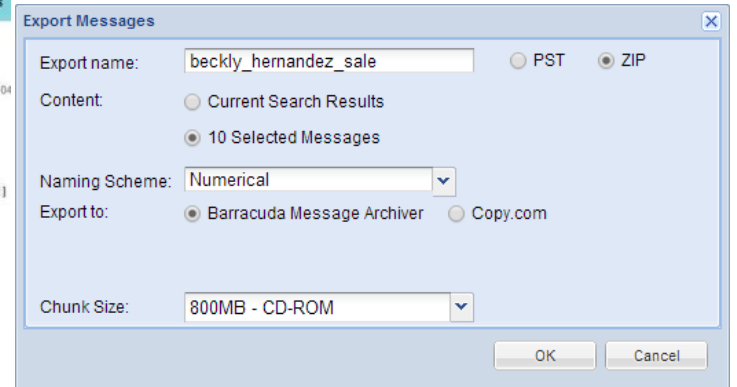


Barracuda MA Search Results

Once you get the results of your search, Jattheon lets you choose the position of the preview pane (down or right), making it easier to review the displayed results. Moreover, there is an option to search through the obtained search results to further narrow down your search.

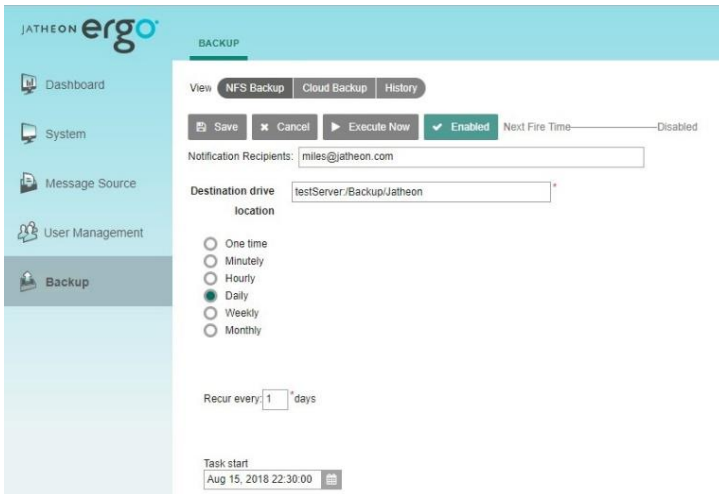


Jattheon cCore Data Export

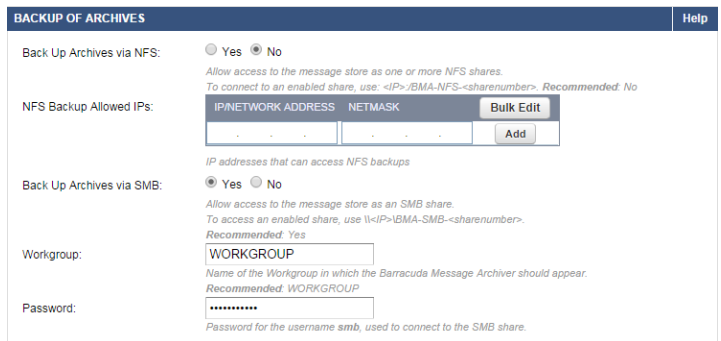


Barracuda MA Data Export

Jattheon gives you the possibility to export up to 5,000 emails into pst/eml files directly from search results using the Export button. You can export a larger number of emails, practically without limitations, by using the Export Task – silent export that runs in the background, freeing up the web interface for other activities. You can track the progress of export and once the file is ready, you will receive an email notification with the download link.



## Jatheon cCore Backup



## Barracuda MA Backup

Although Barracuda offers various backup options, Jatheon's backup is done on a binary level and relies on ZFS snapshots. ZFS snapshots are superior because they reflect the entire data as it existed at a single point in time and can be created extremely quickly. Another advantage is that all email data, metadata and system settings are backed up at once and in a single location.

## More things you'll love about Jatheon

- ✓ Outlook plugin
- ✓ Fully customizable user roles
- ✓ Deduplication of messages and attachments
- ✓ Easy onboarding and training
- ✓ Seamless LDAP integration
- ✓ Better reporting and data analytics
- ✓ Excellent cloud backup and data recovery plans
- ✓ 5+ billion archived messages
- ✓ Included in 2016 and 2018 Radicati Information Archiving Market Quadrant
- ✓ Compatible with all major email platforms
- ✓ RAID-Z architecture and enterprise grade hardware components
- ✓ eDiscovery features – legal hold and audit trail

## Customers who have happily switched to Jatheon

"Jatheon is one of the best kept secrets in the email archiving world. Their advanced search is incredible. It's easy to create a complex search using many email parameters. I can create searches and download results in minutes."

Jay A, Director of IT

"Excellent service! Support was very professional and they resolved the issue we had in record time. Prompt and quick service. We are very satisfied."

Palmerston North City Council

"Export is extremely easy and efficient compared to other solutions I've worked with. The export task gets everything done in no time. It's also very competitively priced."

Shaun Tuttle, Marsico Capital Management LLC

## Ready to give it a try?

Evaluate Jatheon for yourself. We're sure you'll be impressed.

Schedule your personal demo by calling **1-888-528-4366**.

If you decide to make the switch, we promise you a considerable discount in price.

Still under yearly maintenance with Barracuda? No problem! We'll structure a pricing arrangement to offset your current maintenance cost. **Give us a call and find out the details.**

## We specialize in email archiving.



## About Jatheon

We founded Jatheon Technologies Inc. in 2004 to empower companies in their efforts to ensure email compliance and facilitate eDiscovery.

Today, we are leaders in the archiving industry, with **5+ billion processed messages** and unique on-premise and cloud archiving and governance solutions. We continue to raise the bar throughout the industry with our latest enterprise-grade **cCore** archiving appliances, a powerful archiving, retrieval and dynamic monitoring software and best-in class tech support, **Jatheon Care**. In 2017, we built **Jatheon CTRL** - a social media and mobile archiving add-on that smoothly integrates with our email archiving software.

It is our mission to ensure security and bring peace of mind to businesses, government agencies, educational, financial and healthcare institutions across the globe. We're headquartered in Toronto, but we serve clients worldwide through our network of global business partners. For more information, please visit [www.jatheon.com](http://www.jatheon.com).

## Get in touch to discuss your Jatheon plan



Website [www.jatheon.com](http://www.jatheon.com)



Phone +1 (888) 528-4366



Email [sales@jatheon.com](mailto:sales@jatheon.com)