

Looking for an Office 365 email archiving alternative?

MINIMIZE TIME FOR EDISCOVERY, SIMPLIFY DATA MANAGEMENT, ARCHIVE AND RETRIEVE CRUCIAL INFORMATION IN SECONDS.

All with zero data redundancy.

Jatheon lets you archive all your communication channels from a single screen, while providing full support in your eDiscovery and compliance efforts.



Jatheon vs Office 365 Pricing

JATHEON

Starting at **\$2 per user/month** if prepaid for four years.

You can use the entirety of Jatheon enterprise archiving, compliance and eDiscovery functionalities, without additional requirements.

Jatheon is compatible with all major email platforms.

SMARSH

As a separate service, Exchange Online Archiving starts at **\$3 per user/month**.

This package comes with archiving, compliance, and eDiscovery functionalities. Depending on your plan, some size limits on mailbox and archive may apply.

Exchange Online Archiving is **compatible only with Exchange Servers**.

Why switch from Office 365 archiving to Jatheon?

Archive all channels of business communication. Fully customize user roles. 24/7 monitoring and tech support.

FEATURES	JATHEON ARCHIVING SUITE	JATHEON CLOUD	OFFICE 365
Storage	Maximum 192TB	Unlimited	Unlimited
Expandable*	Yes	Yes	Yes
Search speed*	*****	*****	*****
Import*	Free import of legacy data	Free import of legacy data	*****
Free hardware refresh*	Yes Every 4 years	N/A	N/A
User roles*	Fully customizable	Fully customizable	Not customizable
Social media archiving*	All major social media channels	No	No
Mobile archiving	Yes	No	No
eDiscovery, compliance and litigation	Browses, archives, and restores all types of data.	Browses, archives, and restores all types of data.	Browses only through Sharepoint, OneDrive, and Skype for Business.
Customizable retention policies	Yes	Yes	Yes
Migration of legacy data	*****	*****	*****

*See more in the section below.

Top features you're missing with Smarsh

1. Industry-leading Advanced Searches

Jatheon's advanced search lets you **create and execute complex searches** by filtering emails matching certain criteria (**boolean expressions, wildcard, fuzzy and proximity operators**), keywords and phrases. Based on the **latest search technology**, it allows you to search through large databases and pinpoint exact data in a matter of seconds.

3. Support for eDiscovery and compliance

Jatheon's **comprehensive enterprise data archiving features** help you browse through all business communication channels and **retrieve data essential for eDiscovery requests**. You will **minimize costs** associated with FOIA requests and **ensure full compliance** with key regulations in your industry.

5. Fully customizable user roles

With Jatheon, you can **fully customize roles and permission levels** to **protect sensitive data**. The platform comes with **three default roles**—Admin, Compliance Officer and End User, all of which you can customize. Plus, you can **add new roles** and define them **based on departments, user groups, seniority levels** or any **other criteria** applicable to your organization and its **unique needs**.

7. Superior data availability

Jatheon comes with data integrity features like **end-to-end data full checksum protection, corruption-proof root file system** and **self-healing data sets** that prevent silent data corruption and **ensure long-term data availability**.

2. Archiving of all business communication channels

Jatheon is the **only tool** you need to capture **all electronic communication across various channels**, including content from **email, social media, texts, phone calls** and **voicemail**. Jatheon supports management and archiving of **unstructured data** too, which means you can capture, store, and archive numerous file formats.

4. Data deduplication

While other solutions create multiple copies of the same message—which is not only frustrating, but can create a single point of failure—Jatheon's **deduplication feature** saves **a single copy of duplicate messages**, thus **saving on your storage**, and **increasing your server's efficiency**.

6. 24/7 monitoring and tech support

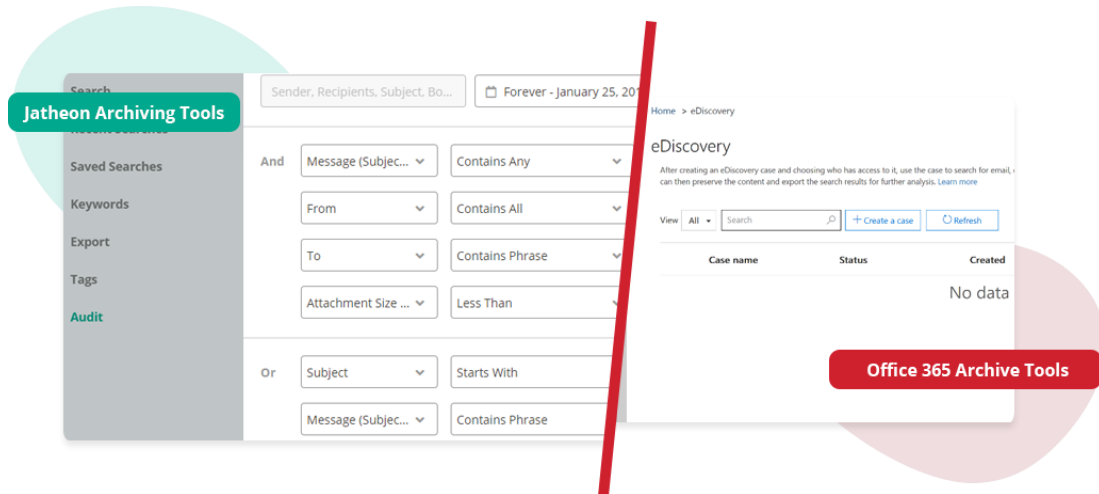
Jatheon comes with **continual dynamic system monitoring** that allows a rapid, **proactive response** and **intervention** for **any** software, hardware or network connectivity **issues**. Apart from a comprehensive knowledge base and detailed technical documentation, you will have access to a dedicated, **in-house tech support team** that continuously gets 100% customer satisfaction rating.

8. Advanced export

Struggling with exporting large amounts of data? Although bulk migrations aren't the primary purpose of email archiving solutions, we believe that a great email archiver needs to have a **robust bulk export functionality**. With Jatheon, the default maximum size of the exported PST file is 3 GB, but **can be customized to up to 64GB**, depending on total RAM size. Moreover, Jatheon's **advanced export runs silently in the background** and **frees up the user interface** for other tasks.

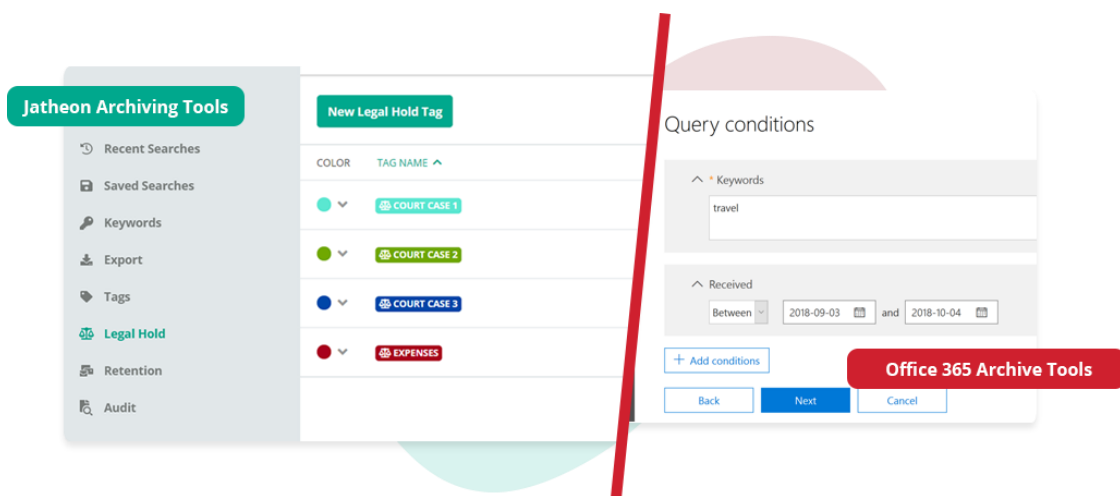
Jatheon vs Microsoft Office 365 Archive Tools

Basic Features Comparison



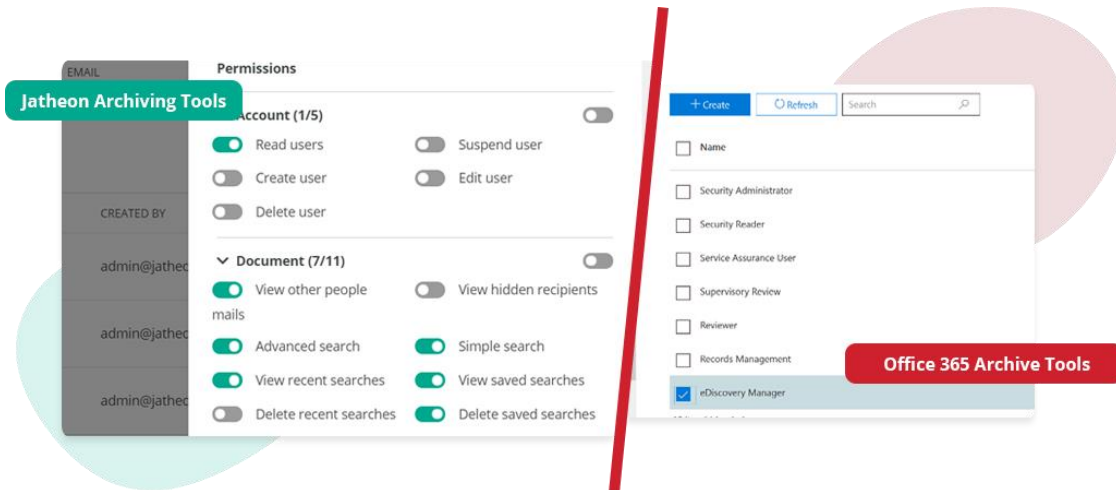
eDiscovery Cases

Jatheon lets you quickly find and export records for pending eDiscovery requests. Through a set of search criteria, retention tags and advanced searches, you can browse through all communication channels and retrieve crucial information and reduce the time and resources spent on litigation requests.



Legal Hold

Apply legal hold to freeze emails and prevent data tampering and deletion. When you need to export them for review, you can do it easily directly from the legal hold section in the side menu. Once your court case or audit is done, your compliance officer can manually remove the legal hold tag.



Custom Roles

Jatheon's flexibility allows you to fully customize user roles and permissions. Start with default roles, add new roles, and fully customize permissions based on user groups, seniority levels, departments, and any other criteria and needs you have.

More things you'll love about Jatheon

- ✓ Easy onboarding and training
- ✓ Seamless LDAP integration
- ✓ Outlook plugin
- ✓ Regular software updates
- ✓ Better reporting and data analytics
- ✓ Excellent cloud backup and data recovery plans
- ✓ 6+ billion archived messages
- ✓ Included in 2016 and 2018 Radicati Information Archiving Market Quadrant
- ✓ Compatible with all major email platforms
- ✓ RAID-Z architecture and enterprise grade hardware components
- ✓ Deduplication of messages and attachments
- ✓ eDiscovery features – legal hold and audit trail
- ✓ Free import of legacy data
- ✓ Optional social media and mobile archiving features

Customers who have happily switched to Jatheon

“Export is extremely easy and efficient compared to other solutions I’ve worked with. The export task gets everything done in no time. It’s also very competitively priced.”

Shaun Tuttle, Marsico Capital Management LLC

“The support I receive from Jatheon is great. The monitoring part is the best because it allows me to focus on other duties and they let me know when there’s an issue. Thanks for everything you do!”

Massillon City School District

“ Few years ago, we couldn’t provide the emails that the lawyers needed and so we started looking for an archiver. After a third party recommendation, we went with Jatheon and haven’t looked back since. It takes 10 minutes to get all the emails we need.”

Mike Opet, Delcora

Ready to give it a try?

Evaluate Jatheon for yourself. We’re sure you’ll be impressed.

Schedule your personal demo by calling **1-888-528-4366**.

As email archiving experts with 16 years of industry expertise, we’re trusted by enterprises and small businesses alike.

About Jatheon

We founded Jatheon Technologies Inc. in 2004 to empower companies in their efforts to ensure email compliance and facilitate eDiscovery.

Today, we are leaders in the archiving industry, with **6+ billion processed messages** and unique on-premise and cloud archiving solutions. We continue to raise the bar throughout the industry with our latest enterprise-grade cCore archiving appliances, a powerful archiving, retrieval and dynamic monitoring software and best-in class tech support, **Jatheon Care**. In 2017, we built **Jatheon CTRL** – a social media and mobile archiving add-on that smoothly integrates with our email archiving software. In 2018, we designed **Jatheon Cloud** – the next-generation cloud email archiving solution perfectly suited for small and medium-sized organizations. In 2019, we launched **Jatheon Archive**, an email archiving and management mobile app that supports both Jatheon cCore and Jatheon Cloud.

It is our mission to ensure security and bring peace of mind to businesses, government agencies, educational, financial and healthcare institutions across the globe. We're headquartered in Toronto, but we serve clients worldwide through our network of global business partners. For more information, please visit www.jatheon.com.

Get in touch to discuss your Jatheon plan



Website www.jatheon.com



Phone +1 (888) 528-4366



Email sales@jatheon.com