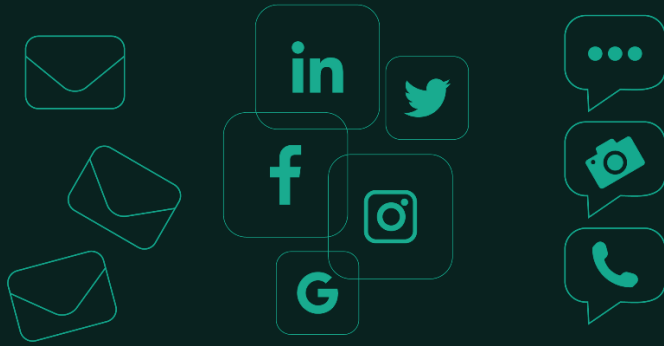


## Jatheon Archiving Suite



## DISCOVER INFORMATION ARCHIVING SOLUTIONS THAT SET THE INDUSTRY STANDARD

Our on-premise archiving solutions empower businesses across the globe to capture, store, manage, and retrieve business communication such as email, social media and mobile. Organizations typically deploy information archiving solutions for reasons such as regulatory compliance, eDiscovery, data governance and security.

Made entirely with server-grade hardware, Jatheon's solutions allow you to add optional modules and expand your archiving activities in case you need to retain content other than email.

**Jatheon cCore** is our robust, enterprise-grade, scalable and expandable archiving appliance that comes with a sophisticated, proprietary email archiving software. Enterprise-grade hardware has the potential to endure heavy workload and uninterrupted use. These powerful, durable and state-of-the-art hardware components ensure the speed and reliability of our archiving appliances. Our on-premise solutions are scalable and can be easily expanded without purchasing a whole new appliance.

### Key Hardware Features

- Server-grade chipsets
- ECC RAM
- SAS hard drives
- RAID array
- Redundant power supply
- ZFS - bit rot proof for long-term data protection
- Chassis with enclosure intrusion detection

### Key Software Features

- Email platform agnostic
- Advanced Search: narrow and filter the search to locate any info in 5 seconds
- Legal Hold: save messages indefinitely
- Audit Trail: monitor user activity to prevent tampering
- Expunge: automatic data deletion
- Retention Policies
- Roles: assign roles and permissions to control access to the appliance
- Export to PST, PSF, EML
- Outlook Plugin

All Jatheon cCore solutions are backed by **Jatheon Care**.

**Jatheon Care** is our comprehensive customer service, maintenance and support plan that consists of:

- 24/7 dynamic system monitoring which allows a rapid, proactive response and intervention for any software, hardware or network connectivity issues
- Dedicated technical support
- Free hardware maintenance and software updates
- Free hardware refresh every 4 years
- Free importing of legacy data
- Training and documentation

**Outlook Plugin** allows you to access, search and manage your archived information directly from Outlook.

## Add-Ons

**Jatheon CTRL** is an add-on that's integrated into Jatheon's email archiving software and can be purchased separately to archive social media, mobile and/or video content. We provide archiving capabilities for the majority of social media channels including Facebook, Twitter, LinkedIn, Instagram, Google+, YouTube, Vimeo, Tumblr, Pinterest, Workplace by Facebook, Flickr and others. Within Jatheon CTRL, you can also archive phone calls from most carriers around the world, SMS, MMS and voicemail using both carrier deployment and Android or iOS apps.

**Jatheon Xpand** additional storage units are an easy and cost-effective way to add more storage to your existing cCore setup without having to purchase a whole new archiving appliance.

**Jatheon Cloud Backup** is an easy way to ensure additional safety of your archived data by mirroring data captured by Jatheon cCore.

**Jatheon DR** is a secondary disaster recovery appliance where data is replicated from the active appliance for added security. In case of a major malfunction of your primary appliance, having a DR will allow you to access and manage your data until the issue is resolved.

### Why Choose Jatheon Archiving Suite?

- unparalleled security of archived data
- all archived data is under your control
- locate any content in a matter of seconds
- save millions of dollars on compliance and eDiscovery
- one-time purchase and yearly maintenance
- no hidden costs
- the only archiving vendor with enterprise-grade hardware in all appliances
- free hardware refresh every 4 years
- competitive prices and unmatched expertise
- archive everything from a single platform

## About Jatheon

We founded Jatheon Technologies Inc. in 2004 to empower companies in their efforts to ensure email compliance and facilitate eDiscovery.

Today, we are leaders in the archiving industry, with **5+ billion processed messages** and unique on-premise and cloud archiving and governance solutions. We continue to raise the bar throughout the industry with our latest enterprise-grade **cCore** archiving appliances, a powerful archiving, retrieval and dynamic monitoring software and best-in class tech support, **Jatheon Care**. In 2017, we built **Jatheon CTRL** - a social media and mobile archiving add-on that smoothly integrates with our email archiving software.

It is our mission to ensure security and bring peace of mind to businesses, government agencies, educational, financial and healthcare institutions across the globe. We're headquartered in Toronto, but we serve clients worldwide through our network of global business partners. For more information, please visit [www.jatheon.com](http://www.jatheon.com).