

Snow & Ice Removal Professionals:

The Ultimate Guide For **Post-Season** Equipment Care



As winter winds down, here is everything you need to know to get your plow ready for the summer months.

A Publication of





CONTENTS

Introduction / 3

How to prepare your **Snow Removal Equipment** for Summer

5 Common Mistakes When Preparing A Plow For Storage / 4

How To Prepare Your Snowplow for Storage / 10

How To Change Your Snowplow's Hydraulic Fluid / 14

How To Protect Your Snowplow From Theft / 17

Off Season Storage Procedures for Your Spreader / 20

Conclusion / 24

Share This Ebook!



www.bosspow.com



Introduction

We wish that preparing your snow & ice removal equipment for summer was as easy as unhooking and unloading from the truck and walking away. However, doing so is not the wisest option to ensure your equipment will be ready when the snow hits again. This guide will help you through the summer preparation process and ensure that your equipment is in its best shape for when winter rolls around again.



CHAPTER 1

5 Common Mistakes

When Preparing A Plow For Storage

MISTAKE NUMBER 1:

Putting The Snow Plow Away Dirty

Your snow plow has seen the worst of winter weather and no doubt has encountered its fair share of salt and grime during the season. Putting your snow plow into storage without a thorough cleaning is a common mistake made by snow plow owners.

- To prevent corrosion, always wash your snow plow thoroughly before putting it into storage to remove any excess salt and sand that may have accumulated during the season.
- If you want to add an extra layer of protection, you may want to consider adding a coating of vehicle wax to the plow.

Share This Ebook!



www.bossplow.com

.....

MISTAKE NUMBER 2:

Parking The Plow In The Yard

While hiding the snow plow behind the shed in the back yard may seem like a good idea, it's not the best storage option. Another common mistake is storing the plow under an enclosed tarp. Snow plows are generally made out of steel. Storing the plow on the ground or under a tarp can accelerate the rusting process.

- To limit rust on your snow plow, keeping your snow plow inside a garage or storage building is your best option.
- If you do need to store the plow outside, it is recommended that you elevate the plow on a platform so the plow is not directly exposed to the ground. If using a tarp, make sure that air can flow thru and does not allow moisture to become trapped.

Share This Ebook!



www.bossplow.com

.....

MISTAKE NUMBER 3:

Not Changing The Hydraulic Fluid

Forgoing the changing of the hydraulic fluid is a very common mistake that plow owners make. Many wait until they take their plow out of storage to change the hydraulic fluid. However, this mistake puts the hydraulic system at risk for rust as moisture in the hydraulic system can build up during the season.

- It is recommended that the hydraulic system be completely drained and new snow plow hydraulic fluid added before storing the plow. Check your snow plow manual for information on the types of hydraulic fluid recommended as factory fluid may be formulated differently than generic fluid.
- For those looking to take an extra preventative measure, you may also want to consider cleaning/replacing the filter on the plow pump assembly. This involves a bit more work but it will ensure that you are getting out any foreign objects that may have lodged in the unit during the winter.

Share This Ebook!



www.bossplo.com

.....

MISTAKE NUMBER 4:

Forgetting To Grease The Plow Components

When storage time comes around it's also time to break out the grease.

- Before you detach your snow plow you will want to grease any exposed chrome on the lift cylinder rod and on the angle cylinders to protect them from corrosion.
- After greasing is complete, power the lift tower forward until the lift cylinder is completely compressed. This will add an additional layer of corrosion protection.
- In addition to the lift cylinder, it is also important to grease the electrical components. Disconnect all electrical plugs and coat each connection with dielectric grease (lights, valve assembly, pump, pump solenoid and battery). Then install all dust caps and plugs provided.
- Also, if you own a v-plow you will want to grease the coupler spring pins and the vertical hinge bushings.

Share This Ebook!



www.bossplo.com

.....

MISTAKE **NUMBER 5:**

Maintaining Spring Tension

It is recommended that trip return springs, during operation, be tightened so that a business card can be slid between the coils in the middle of the spring. However, when storing the plow, it is unnecessary to maintain this amount of tension on the springs.

- When storing the plow, loosen the trip return springs and if you own a v-blade you will also want to loosen the blade return springs.

Avoiding these common pitfalls when storing your snowplow will extend its life and ensure that it is ready to go when the first flakes start to fly next season.

CHAPTER 2

How To Prepare Your Snowplow For **Storage**

Storing Your V-Blade

→ Before you detach your plow, grease any exposed chrome or nitro bar on the lift cylinder rod and on the angle cylinders to protect them from corrosion.

→ Drive the snowplow to a storage site. Follow the normal procedure for dismounting from the truck.

→ Power the lift tower forward until the lift cylinder is completely compressed. This will protect the lift cylinder from corrosion.

→ Disconnect all electrical plugs and coat each connection with dielectric grease (lights, valve assembly, pump, pump solenoid, and battery). Install all dust caps and plugs provided.

→ Touch-up any rust spots or chipped paint.

→ Loosen the trip return and the blade return springs.

→ Grease the coupler spring pins.

→ Grease the vertical hinge bushings.

Storing Your Straight Blade

→ Before you detach your plow grease any exposed chrome or nitro bar on the lift cylinder rod and on the angle cylinders to protect them from corrosion.

→ Drive the snowplow to a storage site. Follow the normal procedure for removing the plow.

→ Power the lift tower forward until the lift cylinder is completely compressed. This will protect the lift cylinder from corrosion.

→ Disconnect all electrical plugs and coat each connection with dielectric grease (lights, valve assembly, pump, pump solenoid, and battery). Install all dust caps and plugs provided.

→ Touch-up any rust spots or chipped paint.

→ Loosen the trip return springs.

→ Grease the coupler spring pins.

→ Grease any exposed chrome on the angling cylinders to protect from corrosion.



Snowplow Caster Kit

When your snowplow comes off the truck at the end of the season, it's not always ideal to have it stationary. Sometimes where it's first placed isn't where it ends up staying and it can be a lot of work to move it elsewhere. You may want to consider a [snowplow caster kit](#) to make moving the plow around much easier. This kit is ideal for Homeowners, Contractors and Dealers alike for moving plows around the garage, service bay, or showroom floor. Two separate kits are available for straight and V-blades.

STRAIGHT BLADE KIT



V-BLADE KIT

Share This Ebook!



www.bosspow.com

CHAPTER 3

How To Change Your Plow's Hydraulic Fluid



As part of the general maintenance of your BOSS Snowplow it is recommended that you change the hydraulic fluid once per season.

Here are some general instructions about changing the hydraulic fluid on your snowplow:

**Refer to your snow plow owners manual for additional information.*

- 1** Make sure to wear proper safety gear including safety glasses, gloves and steel toed boots.
- 2** Remove the drain plug. The drain plug is accessible from the bottom of the hydraulic pan on the plow. Remove it and drain the fluid.
- 3** When refilling add about a quart of BOSS branded hydraulic fluid.
- 4** Attach the plow to the truck and cycle the plow wings several times. This purges the air from the system.

Share This Ebook!



www.bossplow.com

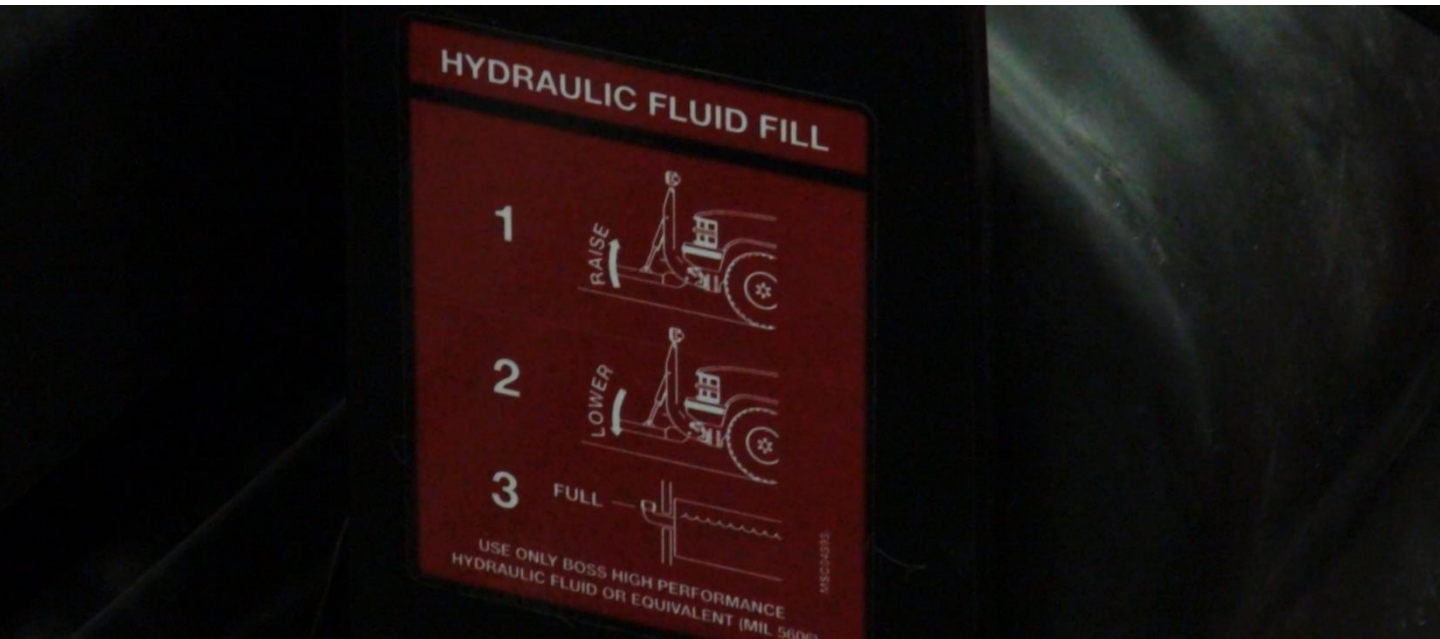




- 5 Then keep the plow attached to the truck, lower the blade, and put the wings back in the V position.

- 6 Top off the fluid to the point where you can just see it in the bottom of the fill elbow.

- 7 Properly dispose of the old hydraulic fluid.



Share This Ebook!



www.bossplo.com





CHAPTER 4


How To **Protect** Your Snowplow From **Theft**



6 Ways to Protect Your Snow Plow from Theft

-  **1** **Register your snow plow.** By registering your plow, you create a record of ownership with the company, should your plow be stolen.

-  **2** **Engrave the serial number in a secret location.** By doing this you almost guarantee that a potential thief cannot tamper with it. This way, when you report your plow stolen, you can disclose to the police where the secret serial number is and ownership can be confirmed. A good place for it would be on the inside of the hydraulic compartment.

-  **3** **Keep your snow plow on your truck.** Don't take your plow off your truck if you don't have to. A plow mounted on your truck is one of the safest places for it to be during the plowing season.

Share This Ebook!



www.bosspow.com



4

Store your snow plow in a secure, well-lit area. Store your plow in a building that you can lock and has sufficient lighting for when you're there and away. For extra measure, an outside motion light could help discourage potential thieves.

5

Put pad locks on your coupler. There are two different ways you can secure your plow with a pad lock. During the months that your snowplow is not mounted on your truck, you can disengage the pins in your coupler system and slide pad locks through the holes where the pins would normally go. This will prevent the pins from sliding through and attaching to anyone else's truck. While mounted, if you want to prevent anyone from removing your plow from your truck, make sure the pins that connect to your truck are engaged and locked in position. Then simply position the padlock in the hole between your plow and the locking latch that goes over the handle controlling the pins. Now, no one can unclip your plow from your truck. This method will also work while your plow is not mounted.

6

Chain and Pad Lock. Of course, you can always go with the tried and true method of using a chain and pad lock and securing your plow to a pole.

CHAPTER 5

Off Season

Storage

Procedures For

Your Spreader

Hopper Spreader Storage Checklist

- Remove the rear spinner assembly, wash, rinse and let dry completely. This will be re-installed for final storage.

CAUTION: DO NOT spray directly into any electrical connections or electric motor.

- Activate the dump switch to completely empty the hopper.
- Pintle Spreader** : Remove the bottom drop pan, wash and rinse. This will be re-installed for final storage.
- Remove spreader from the truck using lift bars located on the top edge of the hopper at each of the four corners.

Share This Ebook!



www.bossplo.com

.....



.....

- Wash and rinse entire unit. Tipping the hopper up on an angle so that the water and material can easily flow out the end of the hopper opening.
- Remove rear black poly cover, wash and rinse the inside of the cover only.
- Wash and rinse all rear drive components.

CAUTION: DO NOT spray directly onto any electrical connections or electric motor.

- Pintle Spreader :** Remove pintle chain from spreader, roll up and fully submerge into a container of oil for storage (transmission oil is recommended). The pintle chain will be re-installed next season.
- Auger Spreader:** Spray oil or similar lubricant the entire length of the auger screw, coating the screw and all fasteners.

Share This Ebook!

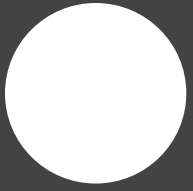


www.bosspow.com

.....

- Clean and grease all bearings.
- Clean all exposed plow-side and truck-side connectors and apply dielectric grease.
- Remove spreader control from the truck cab and store in a clean, dry place.
- Once the Spinner Assembly and Drop Pan are completely dry, reinstall for final storage of the spreader unit.





CONCLUSION & ADDITIONAL RESOURCES



.....

“Ensure that your equipment is in its best shape for when winter rolls around again ...”

To keep a snowplow and other snow equipment strong and looking like new requires diligent work, upkeep and maintenance. We hope this Post-Season eBook helps you keep your equipment in good shape until the flakes fly again!

For additional tips visit our blog at: info.bosspow.com/blog

LEARN MORE ABOUT BOSS

Visit us online at bossplow.com!



Share This Ebook!



www.bossplow.com