

**MADE IN
USA**



CPD Actuators

**Powerful, Maintenance-Free
Roller Screw Actuators**



COMPATIBLE WITH VIRTUALLY ANY SERVO MOTOR

CREATIVE SOLUTIONS TO AUTOMATION'S MOST DEMANDING CHALLENGES

The CPD Series Advantage

Maintenance Free

Oil lubrication is the accepted optimal lubrication methodology for roller screw actuation. All CMC actuators are completely oil filled. *Due to CMC's unique oil lubrication system, the CPD Series is maintenance-free for the life of the unit for most applications.*

Rugged Hydraulic Tie-Rod Construction

CMC's actuators are designed to withstand extreme loads, enabling improved performance and aggressive safety factors to ensure years of trouble-free operation.

Motor Mount Isolation

In an effort to eliminate undue wear on motors and motor bearings, CMC's unique design and motor mount configuration isolates the motor from potential side loads and avoids any resulting premature motor wear.

Internal Anti-Rotation

CPD actuators come standard with an internal anti-rotation feature, so you are free to design for your application without the concerns of external anti-rotation features.

IP65 Compliant

O-Rings and elastomeric seals throughout provide the confidence that your asset is protected from dust, debris and moisture in your operating environment.

Optional Absolute Position

CPD systems are available with an internal absolute position feedback sensor: the Temposonic E Core by MTS. The output options include SSI, Analog, and CanOpen. *Enables accuracy to within $\pm .0002$ ".*

Made in the U.S. by Creative Motion Control

CPD actuators are completely designed and manufactured by CMC in the United States, including all of the main drive components: CMC Planetary Roller Screws, CMC Grooved Roller Bearings, and CMC Planetary Gearboxes.

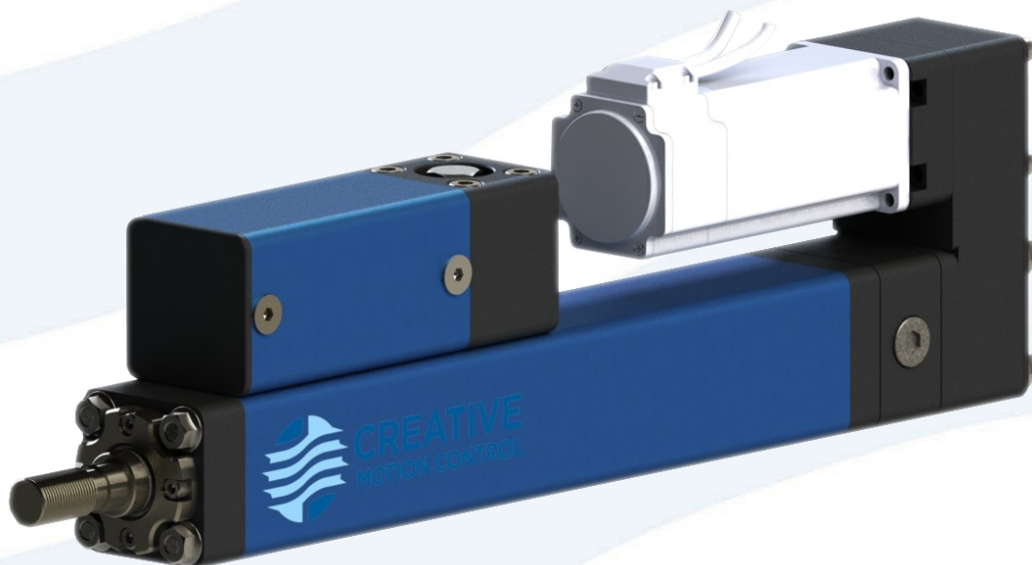
Environmentally Friendly

Fluid leaks, filter changes, and air bleeds are standard procedure with fluid power, and the environmental impact and cost of cleanup can be staggering. With CMC actuators, these issues are in the past. The cost savings, both in monetary terms and in protection of the environment, are real and immediate.

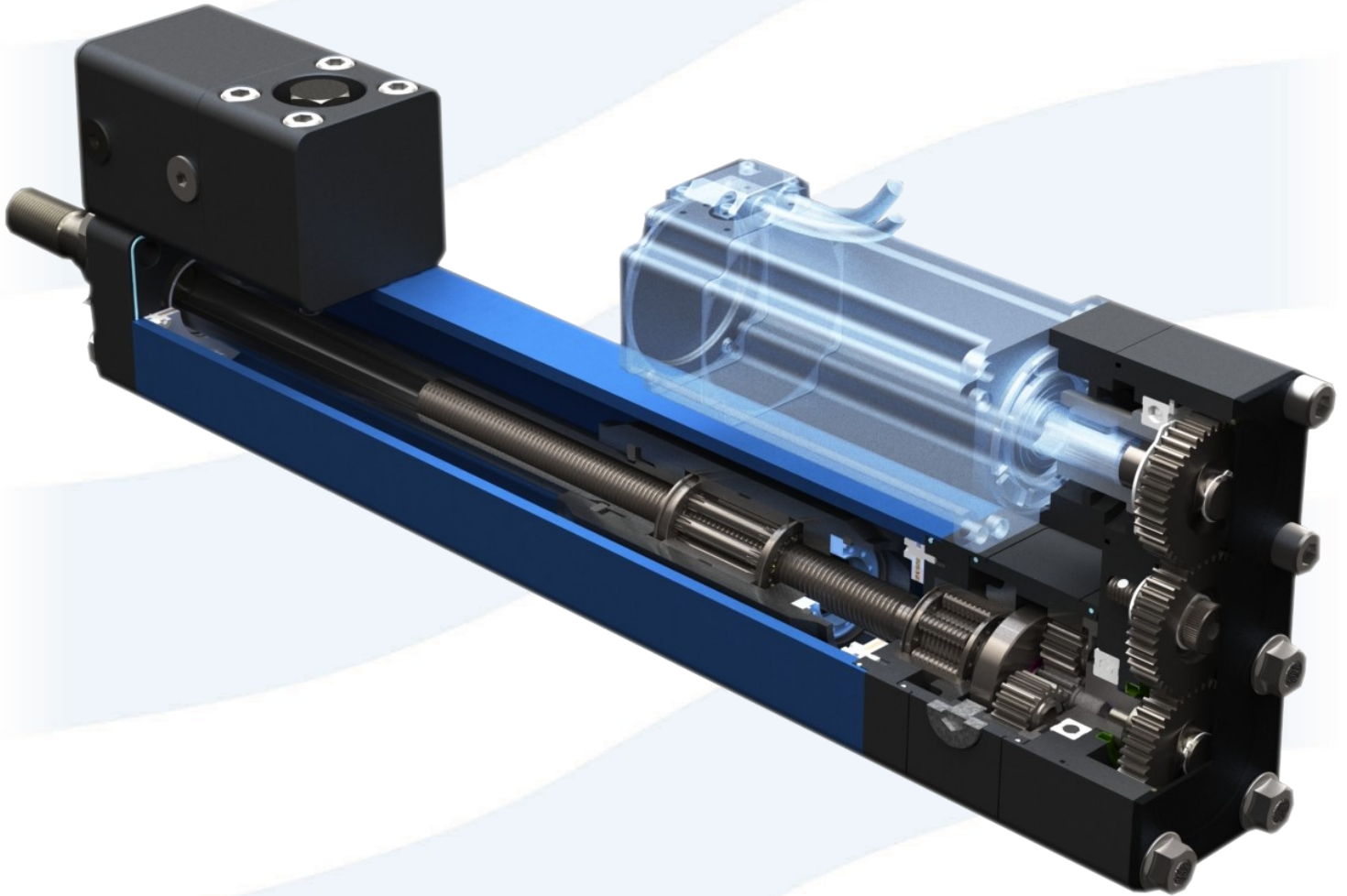
CPD Actuator Performance Overview

Model	CPD-250	CPD-350	CPD-450	CPD-600	CPD-700
Frame Size (inches)	2.5	3.5	4.5	6	7
Max Continuous Dynamic Force (lbf)	6,750	14,220	30,600	54,000	95,000
Max Continuous Dynamic Force (kN)	30	63	136	240	423
Maximum Linear Speed (in/sec)	40	39	39	37	38
Maximum Linear Speed (mm/sec)	1016	991	991	940	965
Minimum Standard Stroke (in)	4	4	6	6	6
Maximum Standard Stroke (in)	12	18	24	36	48

NOTE: These values are the performance characteristics of the actuator itself, unrelated to limitations imposed by the motor. See graphs on the following pages showing anticipated performance for two common sizes of motors for each actuator model. Higher performance can be achieved with custom motor selection.



CPD Roller Screw Actuators



For more details or to contact your local sales representative, email Creative Motion Control at

Sales@CreativeMotionControl.com

Or Call (866) 497-7202

WWW.CREATIVEMOTIONCONTROL.COM

CREATIVE SOLUTIONS TO AUTOMATION'S MOST DEMANDING CHALLENGES