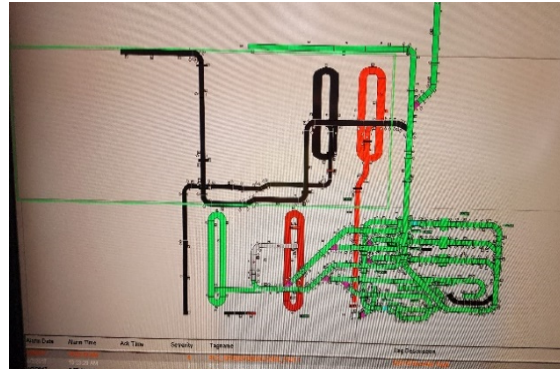




Baltimore-Washington International Airport (BWI) Concourse D/E Connector Baggage Handling System



Client Name: WSP / Parsons Brinkerhoff

Date Started: October 2016

Date Completed: September 2017

The BWI Concourse D/E Connector program is vital to the airport's ability to provide passengers secure connection between domestic (Concourse D) and international (Concourse E) flights without having to exit and re-enter through passenger security checkpoints. To capitalize on the additional building structure, the airport expanded their inbound and outbound baggage operations by installing a new ticket counter and outbound baggage handling system (BHS), as well as a new inbound feed for Spirit Airlines. The expansion also included a new international inbound system including two feed conveyors and a new sloped-pallet claim device within the Federal Inspection Services (FIS) area for inbound international flights.

As a subcontractor to WSP/Parsons Brinkerhoff, TransSolutions provided engineering support to the construction management team for static, dynamic, and functional commissioning of all new BHS-related components for turnover to Maryland Aviation Administration's (MAA) operations and maintenance staff prior to operations by the occupying airlines.

Interfacing between the General Contractor (Whiting-Turner), designer (AECOM), Construction Manager (WSP) and MAA, TransSolutions provided the subject matter expertise required for successful punch-listing of the entire BHS. This required detailed analysis of all upper- and lower-level control systems, mechanical, electrical, and structural installation and product integrity, and maintainability parameters. Through extensive and detailed testing utilizing available operational and non-operational timeframes, TransSolutions identified over 200 punch-list item to-date, with more than 50% being rectified in a timely fashion through close coordination with the BHS installer, VanderLande Industries.